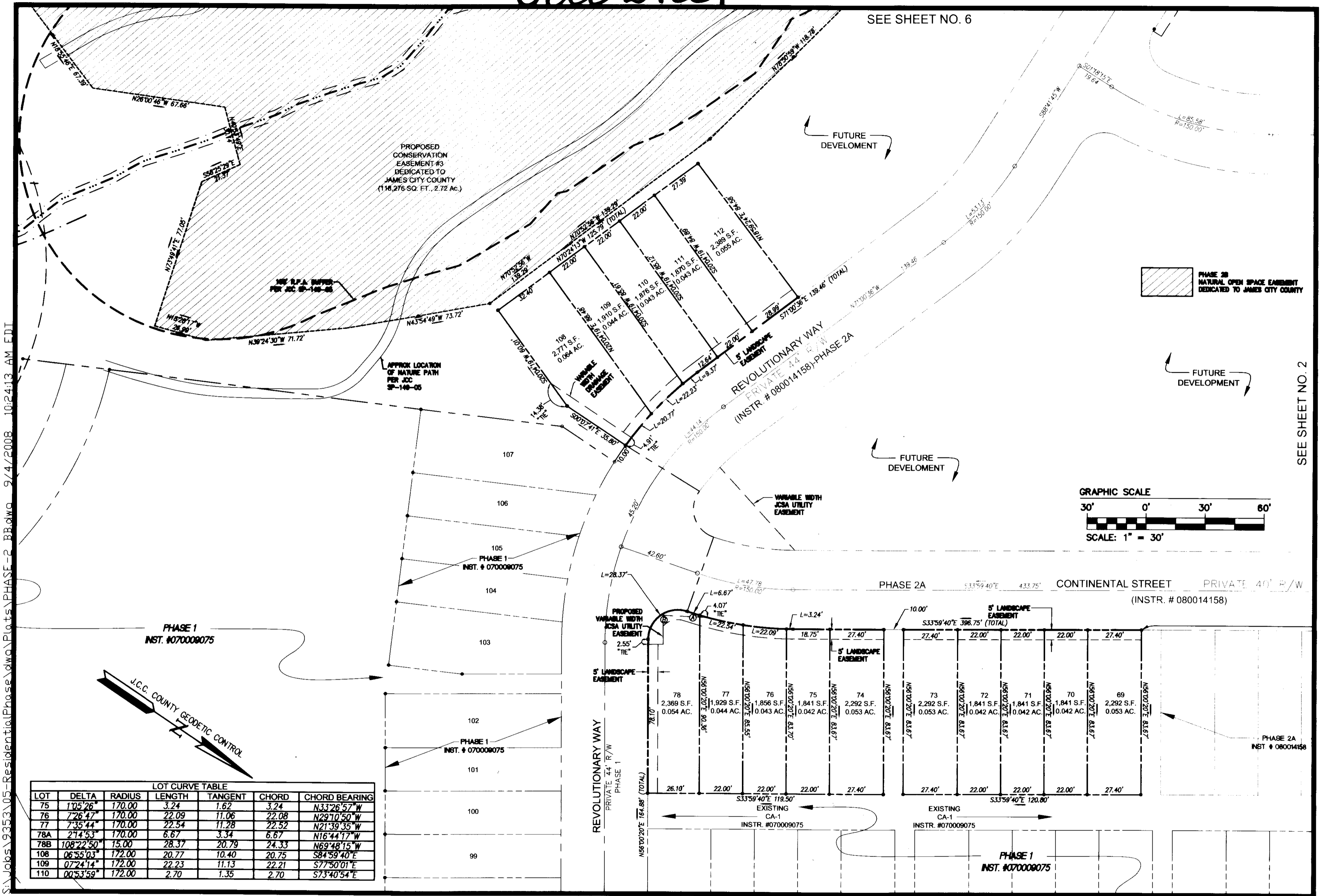


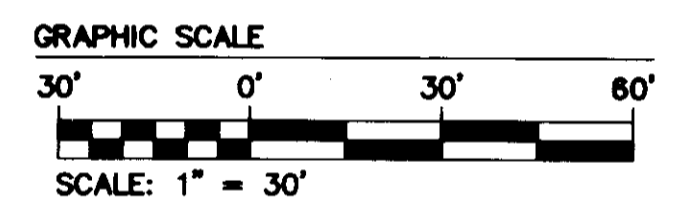
080029801

SEE SHEET NO. 6

SEE SHEET NO. 2



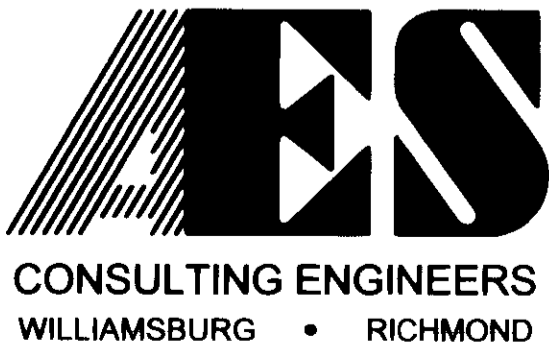
PHASE 2B  
NATURAL OPEN SPACE EASEMENT  
DEDICATED TO JAMES CITY COUNTY



LOT CURVE TABLE

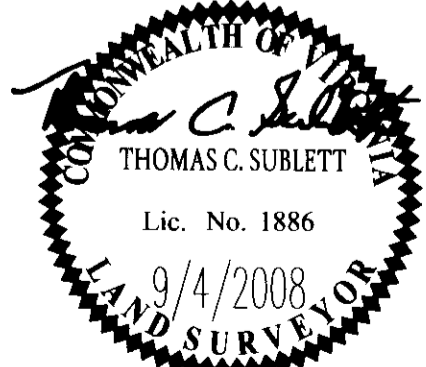
LOT	DELTA	RADIUS	LENGTH	TANGENT	CHORD	CHORD BEARING
75	1°05'26"	170.00	3.24	1.62	3.24	N33°26'57" W
76	7°26'47"	170.00	22.09	11.06	22.08	N29°10'50" W
77	7°35'44"	170.00	22.54	11.28	22.52	N21°39'35" W
78A	2°14'53"	170.00	6.67	3.34	6.67	N16°44'17" W
78B	1°08'22"50"	15.00	28.37	20.79	24.33	N69°48'15" W
108	06°55'03"	172.00	20.77	10.40	20.75	S84°59'40" E
109	07°24'14"	172.00	22.23	11.13	22.21	S77°50'01" E
110	00°53'59"	172.00	2.70	1.35	2.70	S73°40'54" E

S:\Jobs\9353\05-Residential\Phase\Plots\Phase-2\_BB.dwg 9/4/2008 10:24:13 AM EDT



Large/Small Plat(s) Record  
 Record as # 080029801  
 5248 Olde Towne Road, Suite 1  
 Williamsburg, Virginia 23188  
 (757) 253-0040  
 Fax (757) 220-8994

PLAT OF SUBDIVISION  
**PHASE 2-B**  
**LIBERTY CROSSING**  
 LOTS  
 69-78, 108-112, 123-130, 135-138 &  
 NATURAL OPEN SPACE  
 STONEHOUSE DISTRICT JAMES CITY COUNTY VIRGINIA



No.	DATE	REVISION / COMMENT / NOTE	BY

City of Williamsburg & County of James City  
 Circuit Court: This PLAT was recorded on 11 December 2008  
 at 10:06 AM/PM PB - PG  
 DOCUMENT # 080029801  
 BETSY B. WOOLRIDGE, CLERK  
Betsy Woolridge Clerk

Designed AES	Drawn MEG
Scale 1"=30'	Date 9/04/08
Project No. 9353-05	
Drawing No. 5 OF 8	