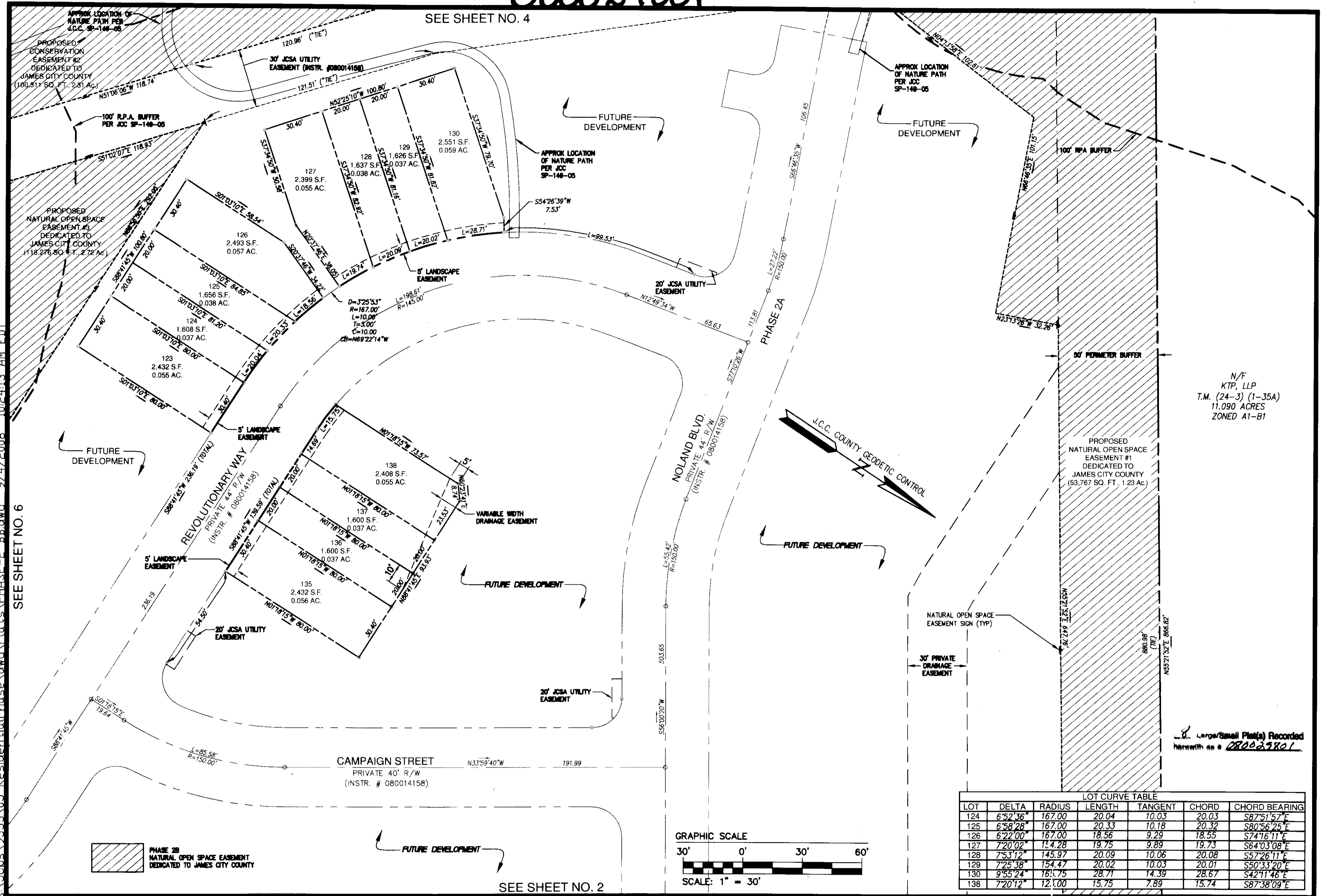
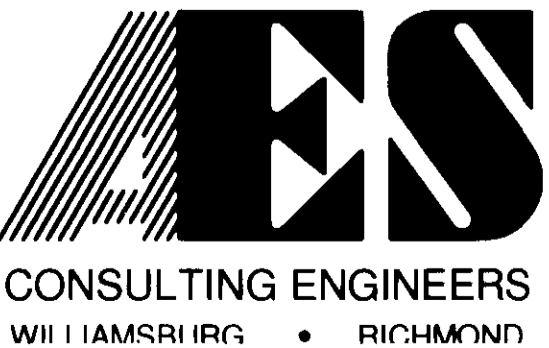


080029801

SEE SHEET NO. 4

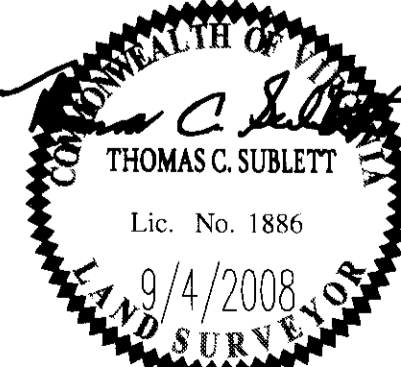


C:\Jobs\9353\05-Residential\Phase 2 B.dwg 9/4/2008 10:24:13 AM EDT SEE SHEET NO. 6



5248 Olde Towne Road, Suite 1
Williamsburg, Virginia 23188
(757) 253-0040
Fax (757) 220-8994

PLAT OF SUBDIVISION
PHASE 2-B
LIBERTY CROSSING
LOTS
69-78, 108-112, 123-130, 135-138 &
NATURAL OPEN SPACE
STONEHOUSE DISTRICT JAMES CITY COUNTY VIRGINIA



| | | | |
|-----|------|---------------------------|----|
| No. | DATE | REVISION / COMMENT / NOTE | BY |
| | | | |

| | |
|------------------------|-----------------|
| Designed AES | Drawn MEG |
| Scale 1"=30' | Date 9/04/08 |
| Project No. 9353-05 | |
| Drawing No. 3 OF 8 | |

Large/Small Plat(s) Recorded
Herewith as # 080029801