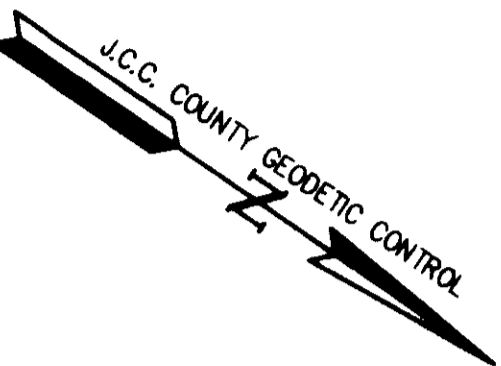
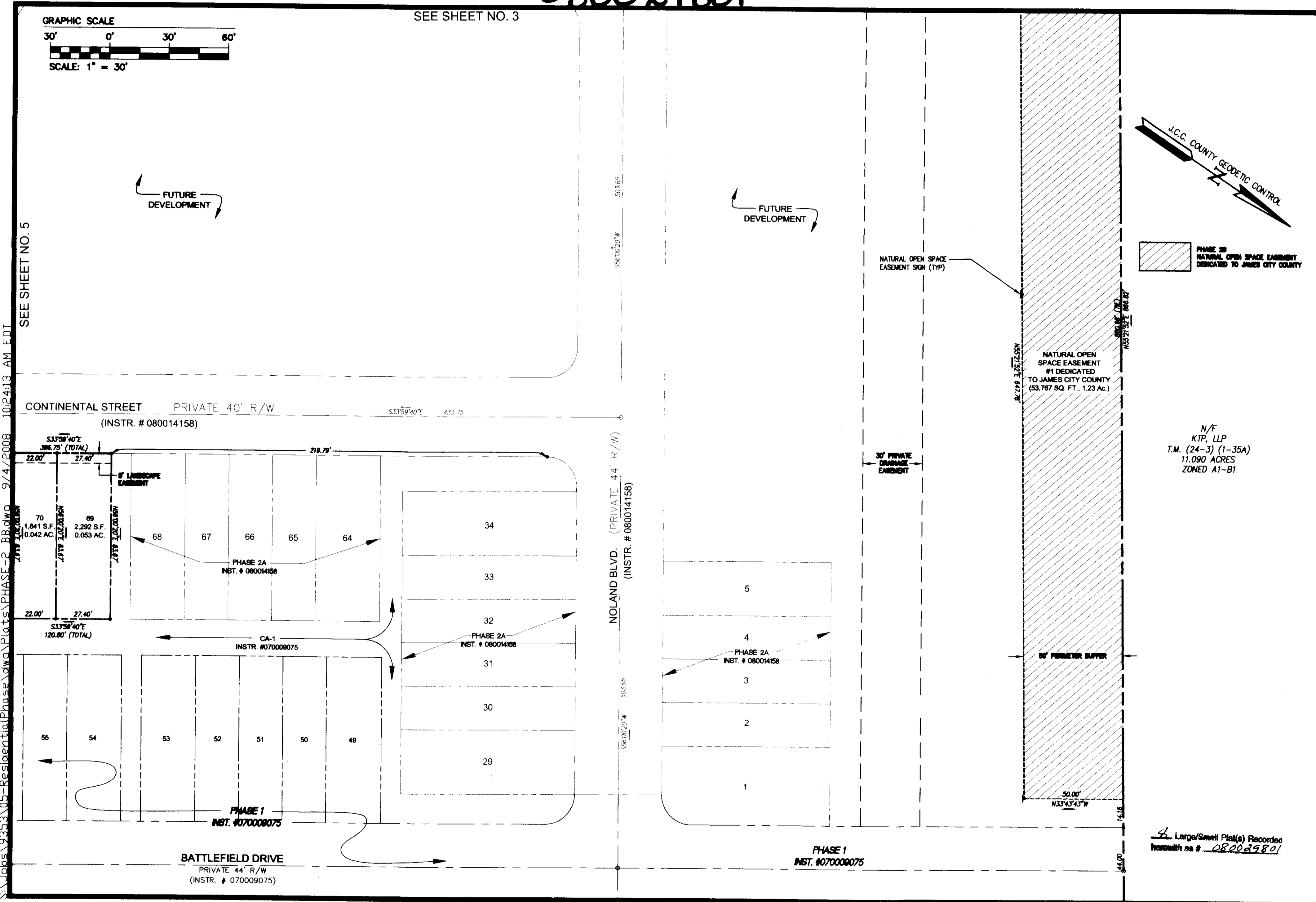
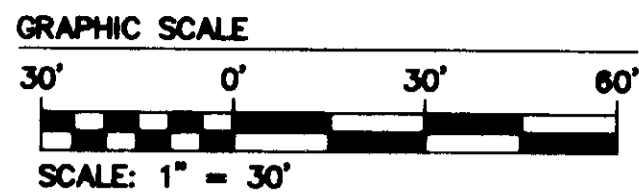


080029801

SEE SHEET NO. 3

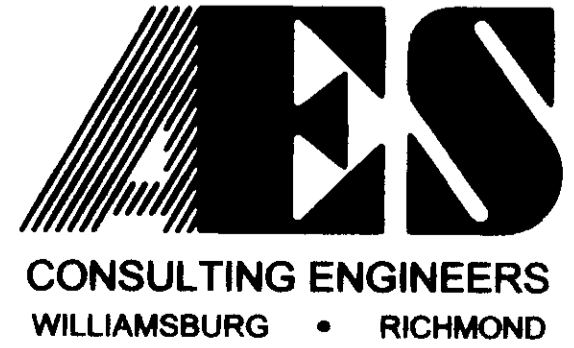


PHASE 2B
NATURAL OPEN SPACE EASEMENT
DEDICATED TO JAMES CITY COUNTY

N/F
KTP, LLP
T.M. (24-3) (1-35A)
11.090 ACRES
ZONED A1-B1

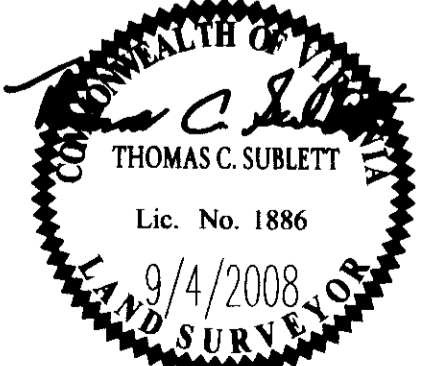
4 Large/Small Plat(s) Recorded
herewith as # 080029801

S:\Jobs\9353\05-Residential\Phase\dwg\Plats\PHASE-2_BB.dwg 9/4/2008 10:24:13 AM EDI



5248 Olde Towne Road, Suite 1
Williamsburg, Virginia 23188
(757) 253-0040
Fax (757) 220-8994

PLAT OF SUBDIVISION
PHASE 2-B
LIBERTY CROSSING
LOTS
69-78, 108-112, 123-130, 135-138 &
NATURAL OPEN SPACE
STONEHOUSE DISTRICT JAMES CITY COUNTY VIRGINIA



No.	DATE	REVISION / COMMENT / NOTE	BY

City of Williamsburg & County of James City
Circuit Court: This PLAT was recorded on
11 December 2008
at 10 06 AM/PM, PB PG
DOCUMENT # 080029801
BETSY B. WOOLRIDGE, CLERK
Betsy B. Woolridge Clerk

Designed AES	Drawn MEG
Scale 1" = 30'	Date 9/04/08
Project No. 9353-05	
Drawing No. 2 OF 8	