

080027247

BOUNDARY LINE  
ADJUSTMENT  
OF THE PROPERTIES OF  
GS STONEHOUSE GREEN LAND SUB, LLC

STONEHOUSE MAGISTERIAL DISTRICT  
JAMES CITY COUNTY, VIRGINIA

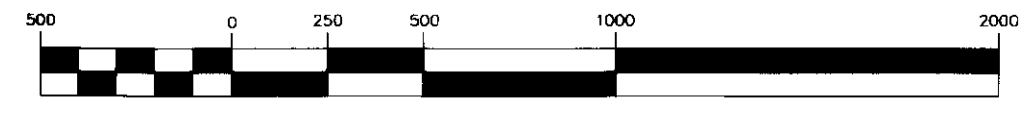
DATE: 08-21-08 SCALE: 1"=500'  
SHEET 6 OF 8



4029 Ironbound Road  
Suite 100  
Williamsburg, VA 23186  
Tel. (757) 253-2975  
Fax (757) 229-0049  
Email: lmdg@landmarkdg.com

Suite 200  
Virginia Beach, VA 23462  
Tel. (757) 473-2000  
Fax (757) 497-7933  
Email: lmdg@landmarkdg.com

GRAPHIC SCALE



( IN FEET )  
1 inch = 500 ft.

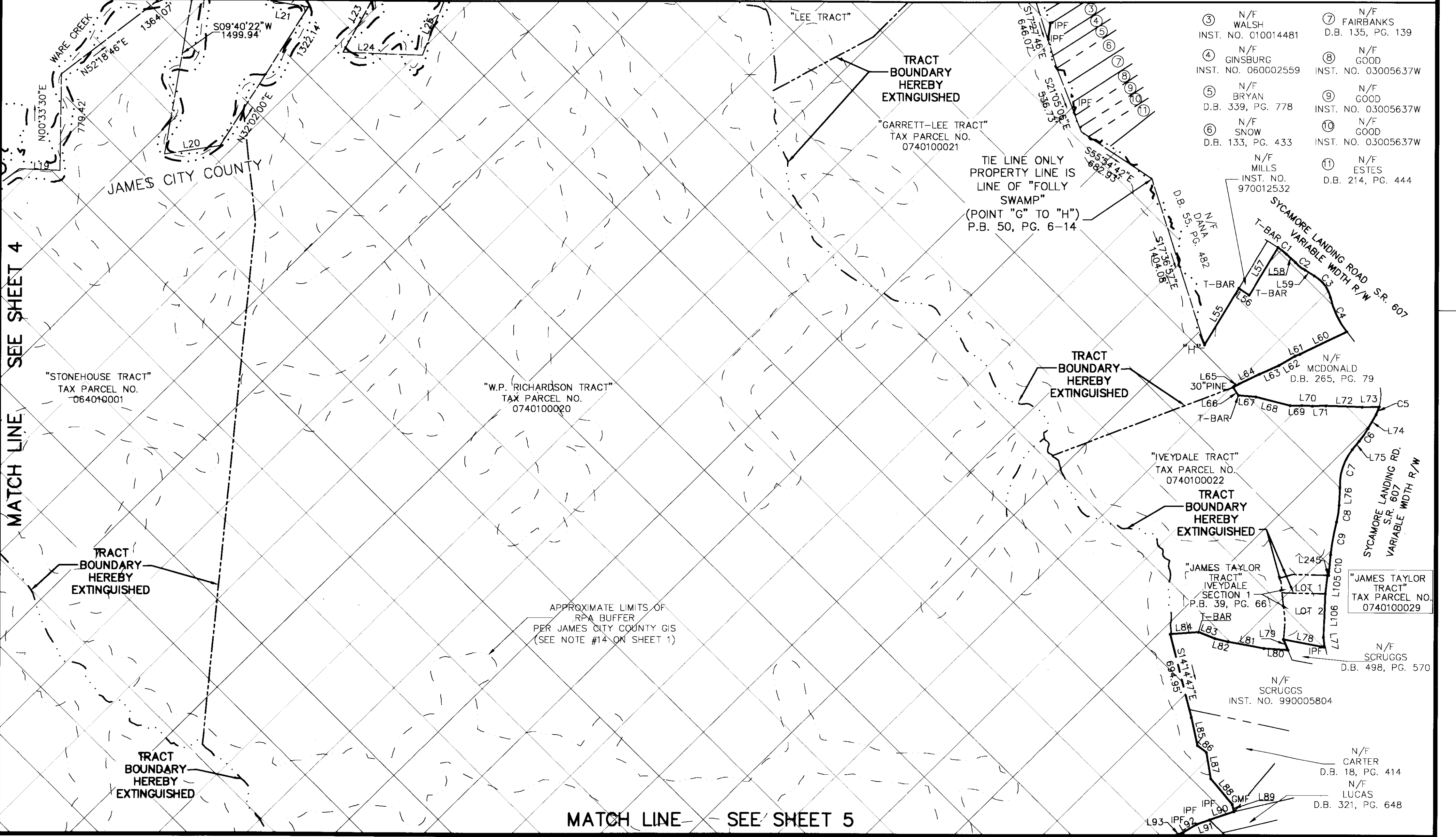


- TRACT ONE 272.97± AC.
- TRACT TWO 587.43± AC
- TRACT THREE 3,031.43± AC.
- TRACT FOUR 38.73 AC.

⊗ = TRACT LINE HEREBY EXTINGUISHED

2 Large/Small Plat(s) Recorded  
herewith as # 080027247

City of Williamsburg & County of James City  
Circuit Court: This PLAT was recorded on  
at 12:25 AM PM on 8/22/08  
DOCUMENT # 284-27247  
BETSY B. WOOLRIDGE, CLERK  
Clerk  
VA STATE PLANE  
SOUTH ZONE  
NAD 83



- |                                       |                                      |
|---------------------------------------|--------------------------------------|
| ③ N/F WALSH<br>INST. NO. 010014481    | ⑦ N/F FAIRBANKS<br>D.B. 135, PG. 139 |
| ④ N/F GINSBURG<br>INST. NO. 060002559 | ⑧ N/F GOOD<br>INST. NO. 03005637W    |
| ⑤ N/F BRYAN<br>D.B. 339, PG. 778      | ⑨ N/F GOOD<br>INST. NO. 03005637W    |
| ⑥ N/F SNOW<br>D.B. 133, PG. 433       | ⑩ N/F GOOD<br>INST. NO. 03005637W    |
| N/F MILLS<br>INST. NO. 970012532      | ⑪ N/F ESTES<br>D.B. 214, PG. 444     |

MATCH LINE SEE SHEET 4

MATCH LINE SEE SHEET 7

MATCH LINE SEE SHEET 5