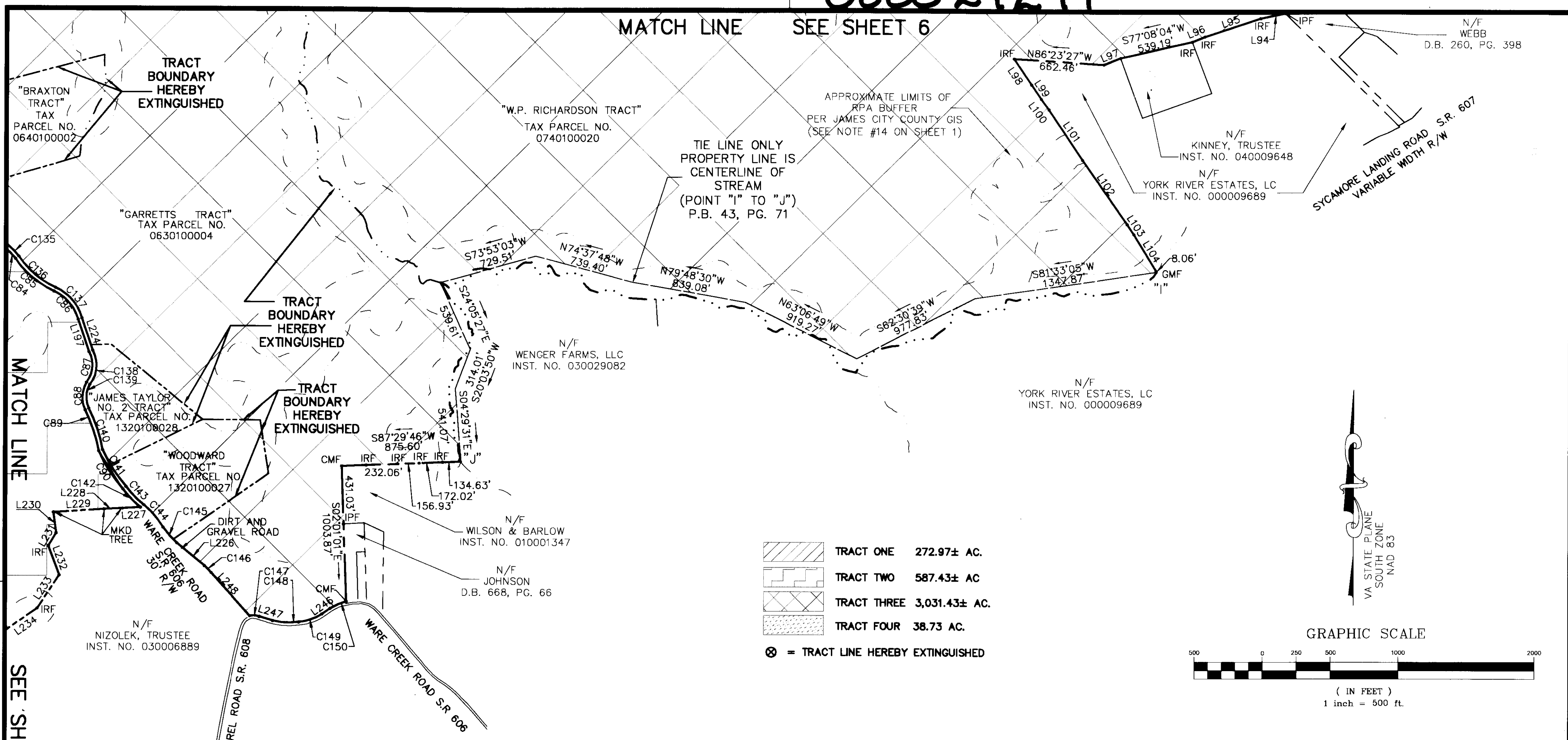
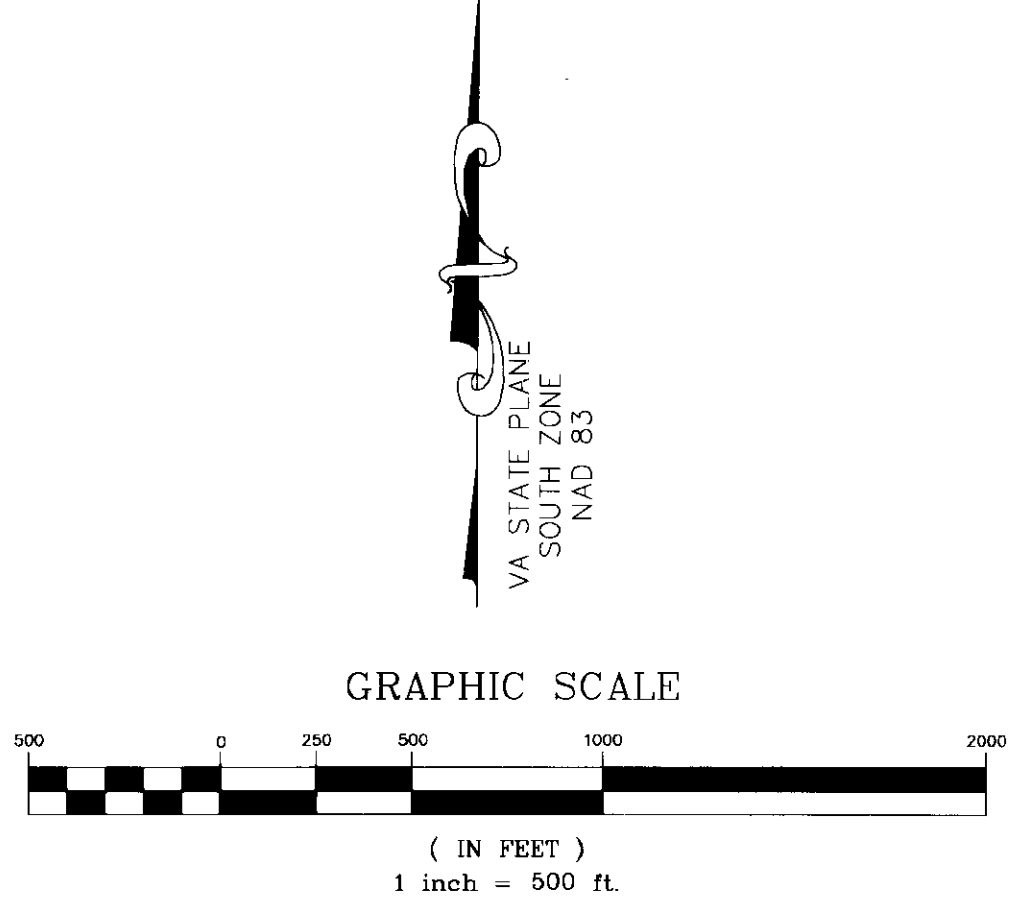


0800 27247

MATCH LINE SEE SHEET 6



- TRACT ONE 272.97± AC.
- TRACT TWO 587.43± AC
- TRACT THREE 3,031.43± AC.
- TRACT FOUR 38.73 AC.
- = TRACT LINE HEREBY EXTINGUISHED



CURVE TABLE						CURVE TABLE							
CURVE	LENGTH	RADIUS	TANGENT	CHORD	CHORD BEARING	DELTA	CURVE	LENGTH	RADIUS	TANGENT	CHORD	CHORD BEARING	DELTA
C1	86.16'	506.30'	43.19'	86.06'	S51°51'53"E	9°45'03"	C28	74.78'	214.22'	37.77'	74.40'	S61°17'41"W	20°00'00"
C2	99.16'	203.99'	50.58'	98.18'	S51°33'54"E	27°51'01"	C29	137.29'	280.44'	70.05'	135.93'	S37°16'11"W	28°03'00"
C3	222.74'	267.41'	118.29'	216.36'	S36°30'55"E	47°43'28"	C36	3714.98'	24705.33'	1861.00'	3711.48'	N67°35'30"W	8°36'56"
C4	307.81'	712.53'	156.34'	305.42'	S25°36'32"E	24°45'06"	C38	429.26'	958.50'	218.29'	425.68'	N09°28'22"E	25°39'34"
C5	69.02'	340.50'	34.63'	68.90'	S21°52'00"W	11°36'52"	C39	74.01'	495.00'	37.07'	73.94'	N79°01'41"E	8°33'59"
C6	125.46'	1028.05'	62.81'	125.38'	S34°17'30"W	6°59'31"	C40	166.76'	754.08'	83.72'	166.42'	N78°53'24"E	12°40'15"
C7	328.57'	464.29'	171.51'	321.76'	S17°41'20"W	40°32'52"	C41	147.07'	382.49'	74.46'	146.17'	N59°17'31"E	22°01'52"
C8	138.18'	911.10'	69.23'	138.05'	S08°45'04"W	8°41'24"	C42	161.75'	357.03'	82.29'	160.37'	N36°13'24"E	25°57'26"
C9	270.19'	1743.91'	135.37'	269.92'	S09°52'13"W	8°52'38"	C43	117.71'	240.44'	60.06'	116.54'	N37°16'11"E	28°03'00"
C10	167.89'	3918.64'	83.96'	167.87'	S05°02'48"W	2°27'17"	C44	59.07'	169.22'	29.84'	58.77'	N61°17'41"E	20°00'00"
C11	152.97'	382.06'	77.52'	151.95'	S49°45'46"W	22°56'22"	C45	365.42'	378.10'	198.40'	351.37'	N30°29'56"E	55°22'29"
C12	329.80'	207.33'	211.50'	296.11'	S15°48'28"W	91°08'29"	C46	98.12'	317.03'	49.46'	97.73'	N11°40'41"E	17°44'00"
C13	467.75'	452.46'	257.20'	447.20'	S04°38'43"W	59°13'56"	C47	33.48'	218.73'	16.77'	33.45'	N24°55'47"E	8°46'11"
C14	408.94'	974.93'	207.52'	405.95'	S22°14'41"W	24°02'00"	C48	69.53'	338.31'	34.89'	69.41'	N18°24'57"E	11°46'32"
C15	289.36'	460.74'	149.63'	284.63'	S07°45'49"E	35°59'00"	C49	103.08'	696.20'	51.63'	102.99'	N16°46'11"E	8°29'00"
C16	199.62'	420.74'	101.72'	197.75'	S12°09'49"E	27°11'00"	C50	179.14'	266.48'	93.10'	175.79'	N40°16'11"E	38°31'00"
C17	168.47'	281.56'	86.84'	165.97'	S18°34'12"W	34°17'01"	C51	113.71'	361.97'	57.33'	113.24'	N68°31'40"E	17°59'57"
C18	77.31'	547.96'	38.72'	77.25'	S48°57'12"W	8°05'02"	C52	149.55'	383.10'	75.74'	148.60'	N71°30'41"E	22°22'00"
C19	166.52'	1165.92'	83.40'	166.38'	S54°13'11"W	8°11'00"	C53	25.40'	20.00'	14.74'	23.73'	S83°17'15"E	72°46'09"
C20	200.44'	1125.92'	100.49'	200.18'	S55°13'41"W	10°12'00"	C54	156.89'	2646.96'	78.47'	156.86'	S32°10'32"W	3°23'45"
C21	126.28'	401.97'	63.66'	125.76'	S68°31'40"W	17°59'57"	C55	189.62'	431.80'	96.36'	188.10'	S19°16'21"W	25°09'37"
C22	206.03'	306.48'	107.08'	202.17'	S40°16'11"W	38°31'00"	C56	162.86'	259.94'	84.20'	160.21'	S17°56'32"E	35°53'53"
C23	109.00'	736.20'	54.60'	108.90'	S16°46'11"W	8°29'00"	C57	228.87'	440.27'	117.08'	226.30'	S19°51'22"E	29°47'04"
C24	135.37'	298.31'	68.87'	134.21'	S25°31'41"W	26°00'00"	C58	90.01'	250.96'	45.49'	89.53'	S22°07'13"E	20°32'58"
C25	81.21'	258.73'	40.94'	80.87'	S29°32'11"W	17°59'00"	C59	188.65'	495.35'	95.48'	187.51'	S51°46'01"E	21°49'14"
C26	110.50'	357.03'	55.70'	110.06'	S11°40'41"W	17°44'00"	C60	189.33'	440.16'	96.15'	187.87'	S45°41'17"E	24°38'42"
C27	266.19'	338.10'	140.42'	259.36'	S48°44'25"W	45°06'32"	C61	101.91'	507.98'	51.13'	101.74'	S28°17'10"E	11°29'41"

City of Williamsburg & County of James City
 Circuit Court: This PLAT was recorded on
 7 November 2008
 at 10:25 AM/PM, PG. 2
 DOCUMENT # 0800 27247
 BETSY B. WOOLRIDGE, CLERK
 Betsy B. Woolridge Clerk



**BOUNDARY LINE
 ADJUSTMENT
 OF THE PROPERTIES OF
 GS STONEHOUSE GREEN LAND SUB, LLC**

STONEHOUSE MAGISTERIAL DISTRICT
 JAMES CITY COUNTY, VIRGINIA

DATE: 08-21-08 SCALE: 1"=500'

Large/Small Plat(s) Recorded
 herewith as # 0800 27247 SHEET 5 OF 8



Engineers • Planners • Surveyors
 Landscape Architects • Environmental Consultants

4029 Ironbound Road
 Suite 100
 Williamsburg, VA 23188
 Tel. (757) 253-2975
 Fax (757) 229-0049
 Email: lmdg@landmarkdg.com

Suite 200
 Virginia Beach, VA 23462
 Tel. (757) 473-2000
 Fax (757) 497-7933
 Email: lmdg@landmarkdg.com