

NOTE:  
 REALTEC INCORPORATED AND/OR THEIR ASSIGNS HEREBY RESERVE EASEMENT OVER, UNDER AND THROUGH ALL THE LANDS OF THE FORD'S COLONY AT WILLIAMSBURG HOMEOWNERS ASSOCIATION SHOWN HEREON THAT MAY BE NECESSARY FROM TIME TO TIME TO EFFECT FURTHER DEVELOPMENT OF THE PROPERTY AND THE INSTALLATION OF SIGNAGE AND LANDSCAPING. FURTHERMORE, THE AFORESAID RESERVE THE RIGHT WITHIN SAID HOMEOWNERS' LANDS TO CONSTRUCT AND MAINTAIN ACCESSORY AMENITY BUILDINGS. SUCH PROPERTY IS ALSO SUBJECT TO THE EASEMENTS, RIGHTS AND LIMITATIONS DESCRIBED IN THE DECLARATION OF PROTECTIVE COVENANTS FOR FORD'S COLONY OR IN SUPPLEMENTS

EXISTING PLATTED EASEMENTS FOR UTILITIES AND DRAINAGE OVER THE LANDS OF THE FORD'S COLONY AT WILLIAMSBURG HOMEOWNERS' ASSOCIATION SHOWN HEREON ARE NOT SHOWN FOR PURPOSES OF CLARITY. REFERENCE IS HEREBY MADE TO THE LAND RECORDS OF JAMES CITY COUNTY FOR MORE EXACT INFORMATION RELATING TO EASEMENT LOCATIONS AND USE.

**AREA TABULATION OF THE LANDS OF THE FORD'S COLONY AT WILLIAMSBURG HOMEOWNER'S ASSOCIATION**

**OPEN SPACE ADJACENT TO WESTBURY HILLS**

PARCEL	WHERE RECORDED	DESCRIPTION	AREA
SECTION 32	P.B. 78, PG. 73-76	GREENWAY	8.78 AC.±
		RIGHT-OF-WAY	3.71 AC.±

**SUMMARY OF PREVIOUS PLATS OF THE FORD'S COLONY AT WILLIAMSBURG HOMEOWNER'S ASSOCIATION**

SECTION	WHERE RECORDED	DESCRIPTION
SECTION 1, 2, 4, 5	P.B. 46, PG. 79	D.B. 366, PG. 564
SECTION 3	P.B. 48, PG. 96	D.B. 395, PG. 787
SECTION 6, LOTS 1-117	P.B. 52, PG. 39	D.B. 477, PG. 35
SECTION 10	P.B. 52, PG. 38	D.B. 477, PG. 35
SECTION 6, LOTS 118-265;	P.B. 53, PG. 80	D.B. 504, PG. 124
SECTION 11A, LOTS 70-156		
SECTION 11A, LOTS 1-89	P.B. 54, PG. 87	D.B. 529, PG. 74
SECTION 7	P.B. 55, PG. 49	D.B. 548, PG. 299
SECTION 9A	P.B. 68, PG. 75-76	DOC. #980004672
SECTION 9B	P.B. 58, PG. 43	D.B. 647, PG. 395
SECTION 13B	P.B. 76, PG. 79	DOC. #00000
SECTION 13C, D, E	P.B. 61, PG. 56	D.B. 734, PG. 740
SECTION 13C	P.B. 68, PG. 75-76	DOC. #980004672
SECTION 16, LOTS 7-84	P.B. 68, PG. 75-76	DOC. #980004672
SECTION 11B, LOTS 1-25	P.B. 76, PG. 51-52	DOC. #000002031
SECTION XVII, LOTS 1-46	P.B. 76, PG. 51-52	DOC. #000002031
SECTION XVII, LOTS 48-71	P.B. 76, PG. 51-52	DOC. #000002031
SECTION XVIII, LOTS 1-32	P.B. 76, PG. 51-52	DOC. #000002031
SECTIONS I (BLOCK D), LOTS 1-5,9;(BLOCK F), LOTS 1-39;		
VII, LOTS 1-172;VIII, LOTS 1-35;		
VIII-B, LOTS 1-45;IX, LOTS 58-111;		
XI-A, LOTS 70-156;XIII-A, LOTS 1-41;		
XIII-B, LOTS 1-62;XIII-C, LOTS 1-34;		
XIV-A, LOTS 1-12;XIV-B, LOTS 1-56;		
XV, LOTS 1-12;XVI, LOTS 1-6,85;		
XVIII, LOTS 1-14,31-32;XXI, LOTS 1-81;XXII, LOTS 1-71,79-92, 130-134	P.B. 88, PG. 40-42	INST. #020026590
SECTION I (BLOCK D), LOTS 1-5,9;(BLOCK F), LOTS 1-39;	P.B. 89, PG. 54-55	DOC. #030005477
SECTION II, ST. ANDREWS DRIVE; SECTION III, LOTS 251-290, MAINTENANCE CENTER; SECTION VI; SECTION XIII-A, LOTS 1-41; SECTION XIII-B, LOTS 1-62; XIV-B, LOTS 1-56; XXXI-A, LOTS 1-35		
SECTION XI-A, LOTS 1-69	P.B. 49, PG. 45-50	DOC. #040009115
	P.B. 55, PG. 2	
SECTION XII, LOTS 2-38,41-72	P.B. 90, PG. 23-25	DOC. #050010098
SECTION XII, LOTS 39 & 40	P.B. 90, PG. 47	DOC. #050010098
OPEN SPACE ADJACENT TO POWHATAN CREEK, LONGHILL SWAMP, AND CHISEL RUN (PARCELS 1-5)	P.B. 81, PG. 7-9	AES PLAT DATED 3-30-05
	P.B. 88, PG. 70-71	AES PLAT DATED 3-30-05
	P.B. 88, PG. 72-76	AES PLAT DATED 3-30-05
SECTION XXX, LOTS 1-16,57-66	P.B. 81, PG. 74-76	AES PLAT DATED 3-30-05
SECTION XXX,	P.B. 87, PG. 80-82	AES PLAT DATED 3-30-05
SECTION XXXIC, LOTS 82-142	P.B. 83, PG. 75-78	AES PLAT DATED 3-30-05
SECTION XXXIII, LOTS 1-50	DOC. #050009649	AES PLAT DATED 10-14-05

TOTAL AREA OF ROAD RIGHT-OF-WAYS (AS SUMMARIZED BY AES PLAT DATED 10-14-05) 333.12 AC.±

TOTAL AREA OF GREENWAYS (AS SUMMARIZED BY AES PLAT DATED 10-14-05) 410.86 AC.±

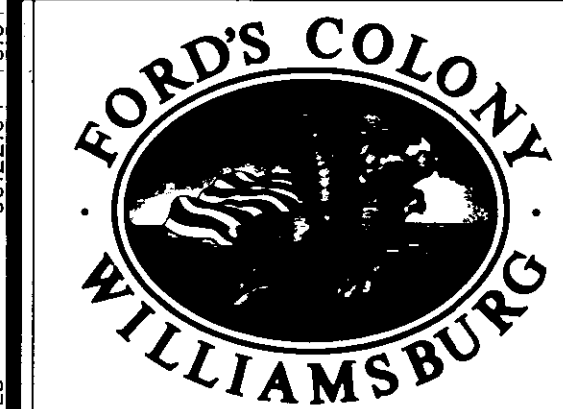
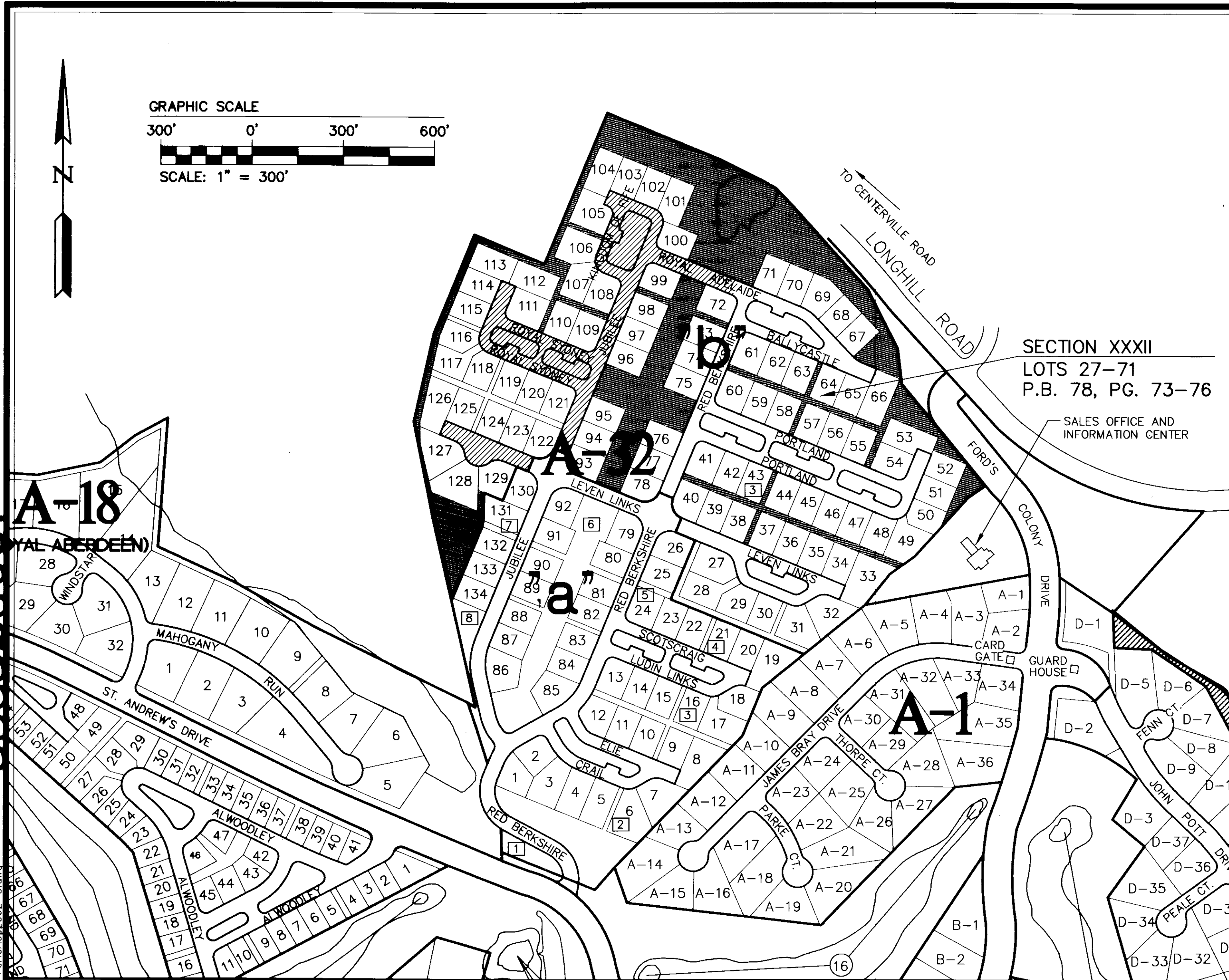
TOTAL AREA OF THE LANDS OF THE FORD'S COLONY AT WILLIAMSBURG HOMEOWNER'S ASSOCIATION 743.98 AC.±

**TOTAL AREA TO DATE SUMMARY OF THE LANDS OF THE FORD'S COLONY AT WILLIAMSBURG HOMEOWNER'S ASSOCIATION (INCLUDES ALL PREVIOUS PLATS)**

TOTAL AREA OF ROAD RIGHT-OF-WAYS 336.83 AC.±

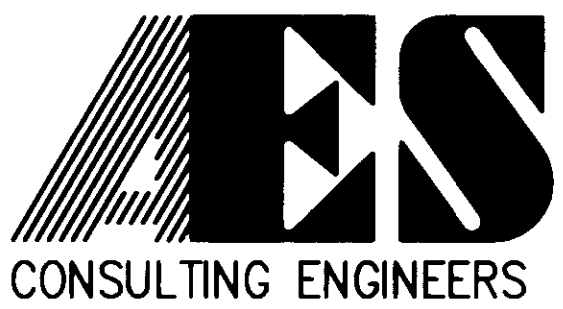
TOTAL AREA OF GREENWAYS 419.64 AC.±

TOTAL AREA OF THE LANDS OF THE FORD'S COLONY AT WILLIAMSBURG HOMEOWNER'S ASSOCIATION 756.47 AC.±



**LEGEND**  
 [Hatched Box] GREENWAY AREA  
 [Hatched Box] ROAD RIGHT-OF-WAYS  
 [Square] INDICATES GREENWAY

080025861  
 09.22.04-16.01 Fch0ACp2002-3.dwg  
 DLD



5248 Olde Towne Road, Suite 1  
 Williamsburg, Virginia 23188  
 (757) 253-0040  
 Fax (757) 220-8994

**MAP OF ADDITIONAL LANDS OF THE FORD'S COLONY AT WILLIAMSBURG HOMEOWNERS ASSOCIATION**

POWHATAN DISTRICT JAMES CITY COUNTY VIRGINIA



No.	DATE	REVISION / COMMENT / NOTE	BY

Designed <b>CBR</b>	Drawn <b>MEG</b>
Scale <b>1"=400'</b>	Date <b>6/20/07</b>
Project No. <b>5652-96</b>	
Drawing No. <b>5 OF 5</b>	

City of Williamsburg & County of James City  
 Circuit Court: This PLAT was recorded on  
 21 October 2008  
 at 10:45 AM/PM: PG. 7-9  
 DOCUMENT # 080025861  
 BETSY B. WOOLRIDGE, CLERK  
 Betsy B. Woolridge Clerk