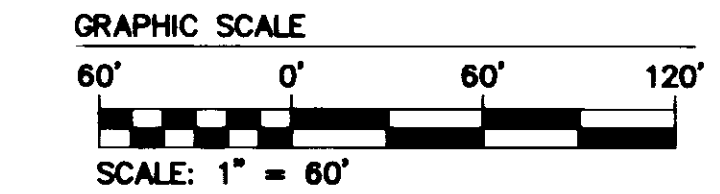
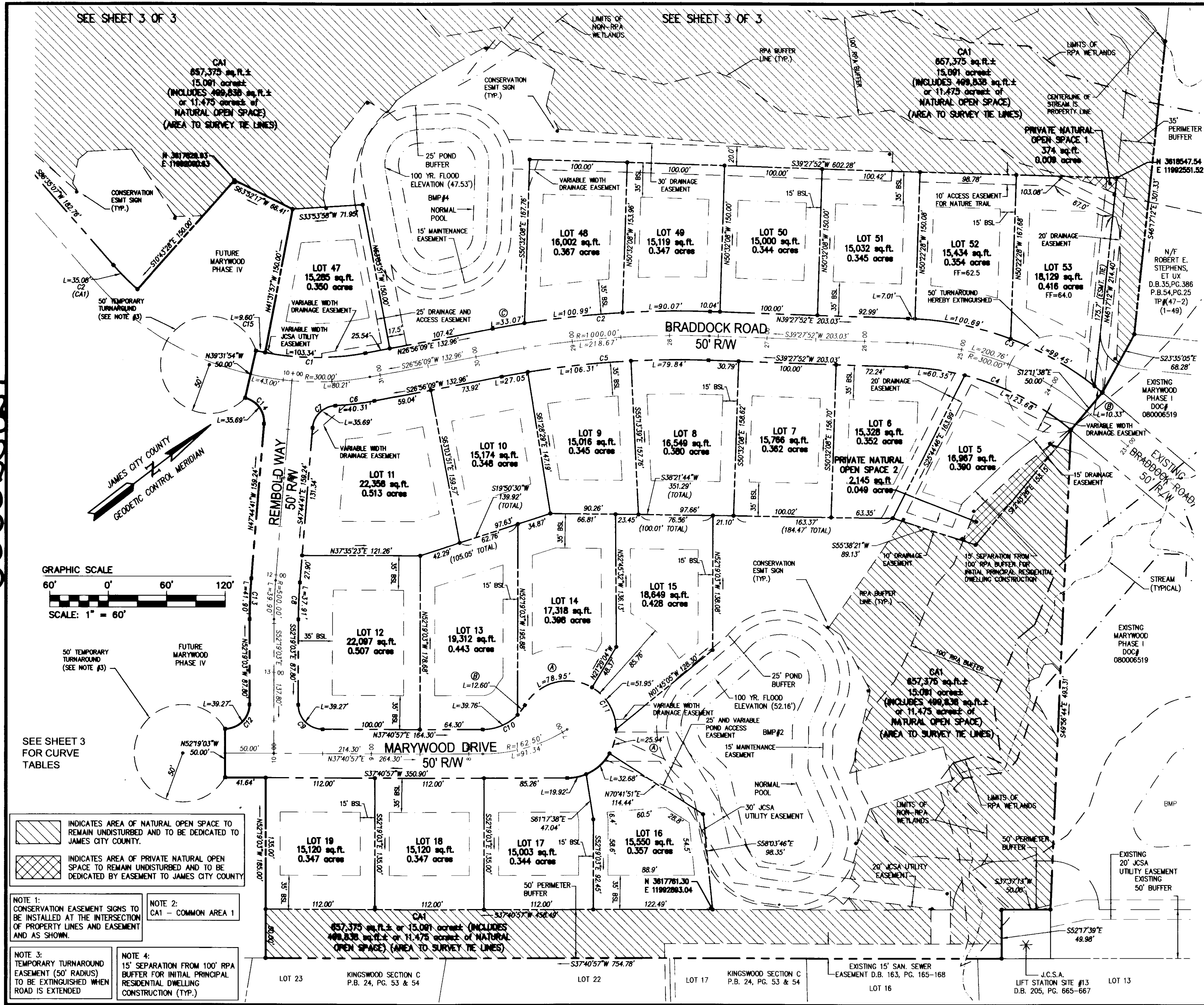


080023821

SEE SHEET 3 OF 3

SEE SHEET 3 OF 3



SEE SHEET 3 FOR CURVE TABLES

- INDICATES AREA OF NATURAL OPEN SPACE TO REMAIN UNDISTURBED AND TO BE DEDICATED TO JAMES CITY COUNTY.
- INDICATES AREA OF PRIVATE NATURAL OPEN SPACE TO REMAIN UNDISTURBED AND TO BE DEDICATED BY EASEMENT TO JAMES CITY COUNTY

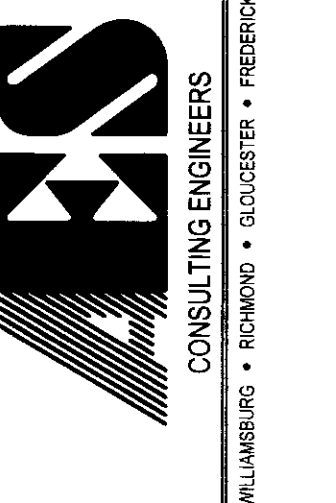
- NOTE 1: CONSERVATION EASEMENT SIGNS TO BE INSTALLED AT THE INTERSECTION OF PROPERTY LINES AND EASEMENT AND AS SHOWN.
- NOTE 2: CA1 - COMMON AREA 1
- NOTE 3: TEMPORARY TURNAROUND EASEMENT (50' RADIUS) TO BE EXTINGUISHED WHEN ROAD IS EXTENDED
- NOTE 4: 15' SEPARATION FROM 100' RPA BUFFER FOR INITIAL PRINCIPAL RESIDENTIAL DWELLING CONSTRUCTION (TYP.)

City of Williamsburg & County of James City	AM/FM: PG
Circuit Court: This PLAT was recorded on	DATE: 4/01/08
at 11:13 AM/FM: PG	FILED: 20080328
DOCUMENT # 080023821	CLERK: BETSY B. WOOLRIDGE, CLERK
No. DATE	



5248 Old Towne Road, Suite 1
Williamsburg, Virginia 23188
(757) 253-0040
Fax (757) 220-8994

Frederick S. Sibley, P.E.
CONSULTING ENGINEERS
WILLIAMSBURG • RICHMOND • GLOUCESTER • FREDERICKSBURG



PLAT OF SUBDIVISION
MARYWOOD
PHASE III
LOTS 5-19 AND 47-53
PREPARED FOR CENTEX HOMES

JAMESTOWN DISTRICT JAMES CITY COUNTY VIRGINIA

Designed: JAG/MJR	Drawn: JFS
Scale: 1"=60'	Date: 4/01/08
Project No.: 9272	Drawing No.: 2 OF 3