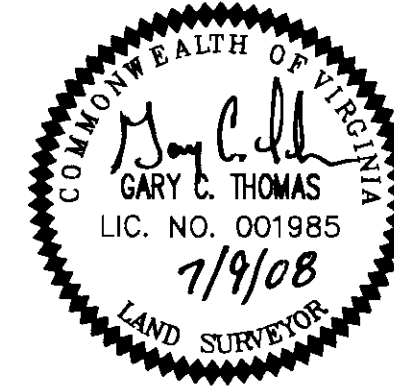


080022842



N/F JAMES CITY COUNTY



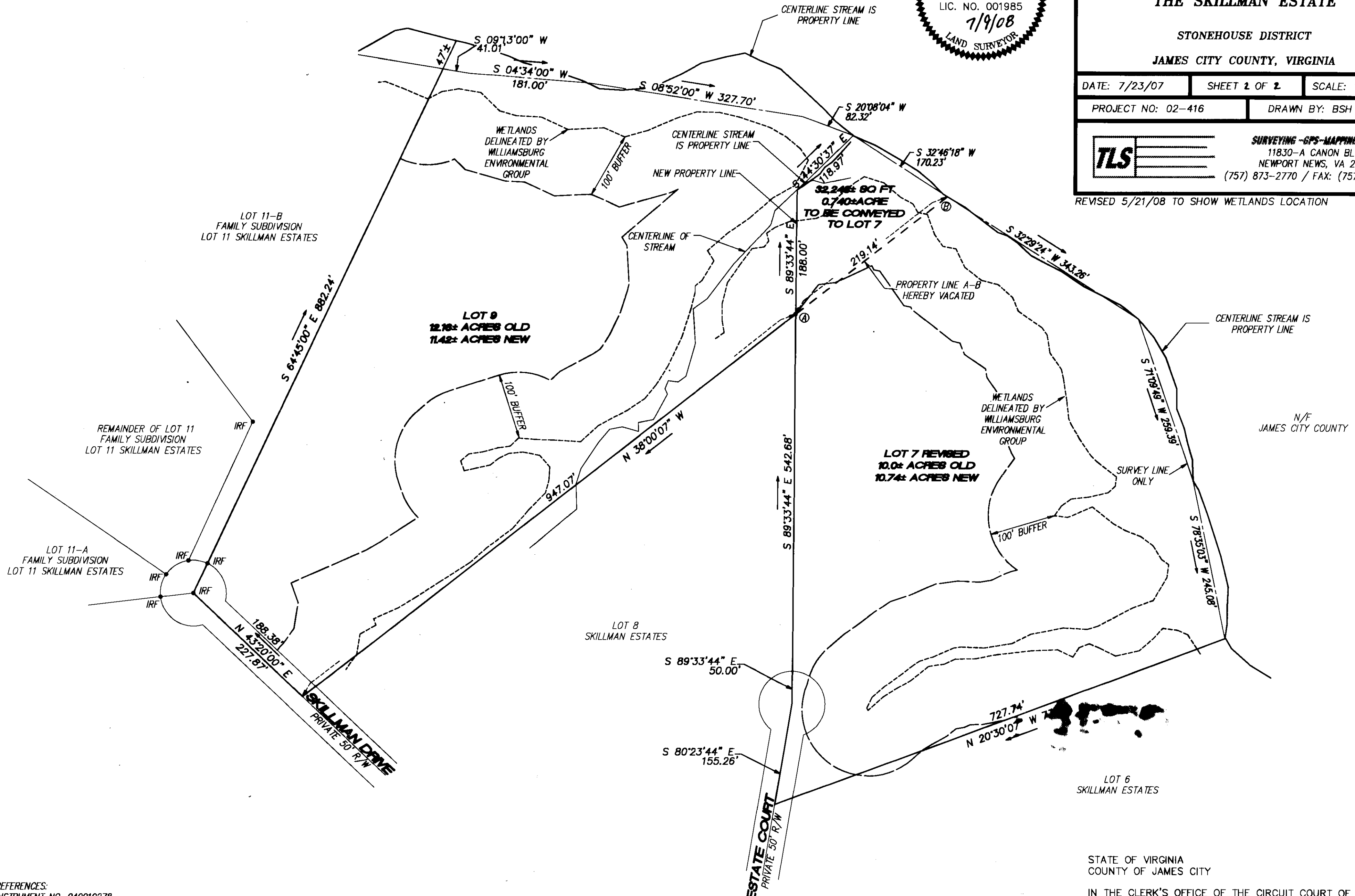
RESUBDIVISION PLAT  
BETWEEN  
LOT 7 REVISED AND LOT 9  
THE SKILLMAN ESTATE  
STONEHOUSE DISTRICT  
JAMES CITY COUNTY, VIRGINIA

DATE: 7/23/07 SHEET 2 OF 2 SCALE: 1"=100'  
PROJECT NO: 02-416 DRAWN BY: BSH



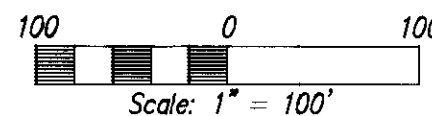
SURVEYING-GPS-MAPPING INC.  
11830-A CANON BLVD.  
NEWPORT NEWS, VA 23606  
(757) 873-2770 / FAX: (757) 873-2772

REVISED 5/21/08 TO SHOW WETLANDS LOCATION



REFERENCES:  
INSTRUMENT NO. 040010278  
PB 31, PG 45

2 Large/Small Plat(s) Recorded  
herewith as # 080022842



City of Williamsburg & County of James City  
Circuit Court: This PLAT was recorded on  
10 September 2008  
at 3:55 AM/PM PB PG  
DOCUMENT # 080022842  
BETSY B. WOOLRIDGE, CLERK  
Betsy B. Woolridge Clerk

STATE OF VIRGINIA  
COUNTY OF JAMES CITY

IN THE CLERK'S OFFICE OF THE CIRCUIT COURT OF  
THE COUNTY OF JAMES CITY, THIS 10  
DAY OF September, 2008, THE MAP SHOWN  
HEREON WAS PRESENTED AND ADMITTED TO THE RECORD  
AS THE LAW DIRECTS.

TESTE: Betsy B. Woolridge  
By Claudia H. Binkley, Dep. Clerk  
CLERK  
PLAT BOOK \_\_\_\_\_, PAGE \_\_\_\_\_