

080022351

SURVEYOR'S CERTIFICATE

I, ROBERT D. MANN, A DULY REGISTERED LAND SURVEYOR, DO HEREBY CERTIFY THAT, TO THE BEST OF MY KNOWLEDGE AND BELIEF, THIS PLAT FOR PHASE 11-A, UNITS #1101, 1102, 1103, AND 1104, WILLIAMSBURG VILLAGE AT NORGE CONDOMINIUM IS ACCURATE AND COMPLIES WITH THE PROVISIONS OF VIRGINIA CODE, ANN. SUBSECTION 55-79.58 (A), AS AMENDED.

Robert D. Mann
 ROBERT D. MANN, L.S. #002509 DATE 8/26/08

CE- COMMON ELEMENTS

COMMON ELEMENTS INCLUDE ALL PORTIONS OF THE CONDOMINIUM OTHER THAN THE UNITS DEFINED IN THE CONDOMINIUM INSTRUMENTS (AS DEFINED IN THE DECLARATION OF CONDOMINIUM).

EXAMPLES OF COMMON ELEMENTS ARE: PARKING, PAVED AREAS, THE GROUNDS (WHETHER OR NOT LANDSCAPED), ENTRANCE MONUMENTS, DRAINAGE PONDS, ALL PORTIONS OF THE BUILDINGS NOT A PART OF THE UNIT NOR DEFINED AS LIMITED COMMON ELEMENTS, AND ALL CONDUITS, INSTALLATIONS, WIRES, PIPES, EQUIPMENT, ETC. WHICH SERVE OTHER COMMON ELEMENTS OR WHICH SERVE MORE THAN ONE UNIT.

THE UNIT OWNERS ASSOCIATION IS RESPONSIBLE FOR MAINTENANCE OF COMMON LANDS TO THE EXTENT THE SAME ARE LOCATED WITHIN THE COMMON ELEMENTS OF THE CONDOMINIUM AND NOT WITHSTANDING THE FACT THAT A PORTION OF THOSE COMMON LANDS MAY BE SUBJECT TO A NATURAL OPEN SPACE EASEMENT DEDICATED TO JAMES CITY COUNTY.

LCE- LIMITED COMMON ELEMENTS

LIMITED COMMON ELEMENTS ARE AS DEFINED IN THE CONDOMINIUM INSTRUMENTS. EXCEPT AS MAY BE OTHERWISE EXPRESSLY PROVIDED, LIMITED COMMON ELEMENTS INCLUDE VERANDAHAS AND ANY OTHER APPARATUS DESIGNED TO SERVE A SINGLE UNIT, BUT LOCATED OUTSIDE THE BOUNDARIES THEREOF, (SUCH AS A FENCE AROUND A PATIO, PORCH OR DECK).

AREA TABULATION

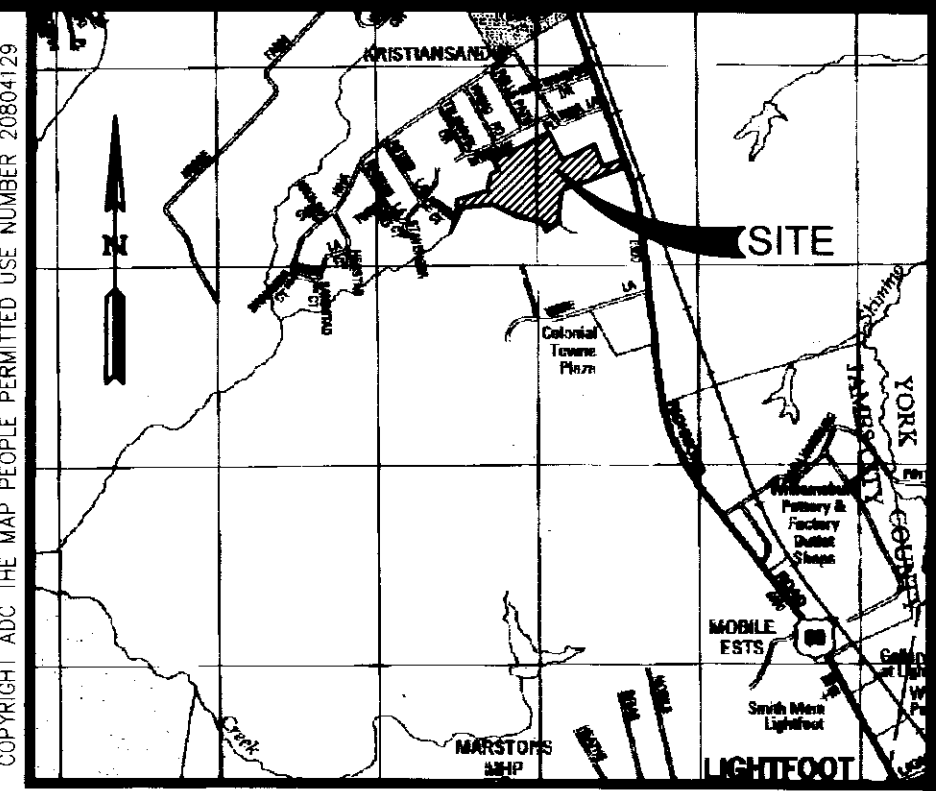
PHASE 1-A	2.811 AC.±
PHASE 2	0.461 AC.±
PHASE 3-A	0.387 AC.±
PHASE 4-A	0.581 AC.±
PHASE 5-A	4.092 AC.±
PHASE 6-A	0.387 AC.±
PHASE 7-A	0.485 AC.±
PHASE 8-A	0.740 AC.±
PHASE 9-A	0.372 AC.±
PHASE 10-A	0.384 AC.±
PHASE 11-A	0.710 AC.±
PHASE 12	0.787 AC.±
PHASE 13-A	0.818 AC.±
PHASE 14	2.082 AC.±
PHASE 15	0.770 AC.±
PHASE 16	0.289 AC.±
PHASE 17	0.289 AC.±
PHASE 18	1.425 AC.±
PHASE 19	1.176 AC.±
PHASE 20	0.276 AC.±
COMMON ELEMENT	0.202 AC.±
TOTAL AREA	18.234 AC.±

GENERAL NOTES:

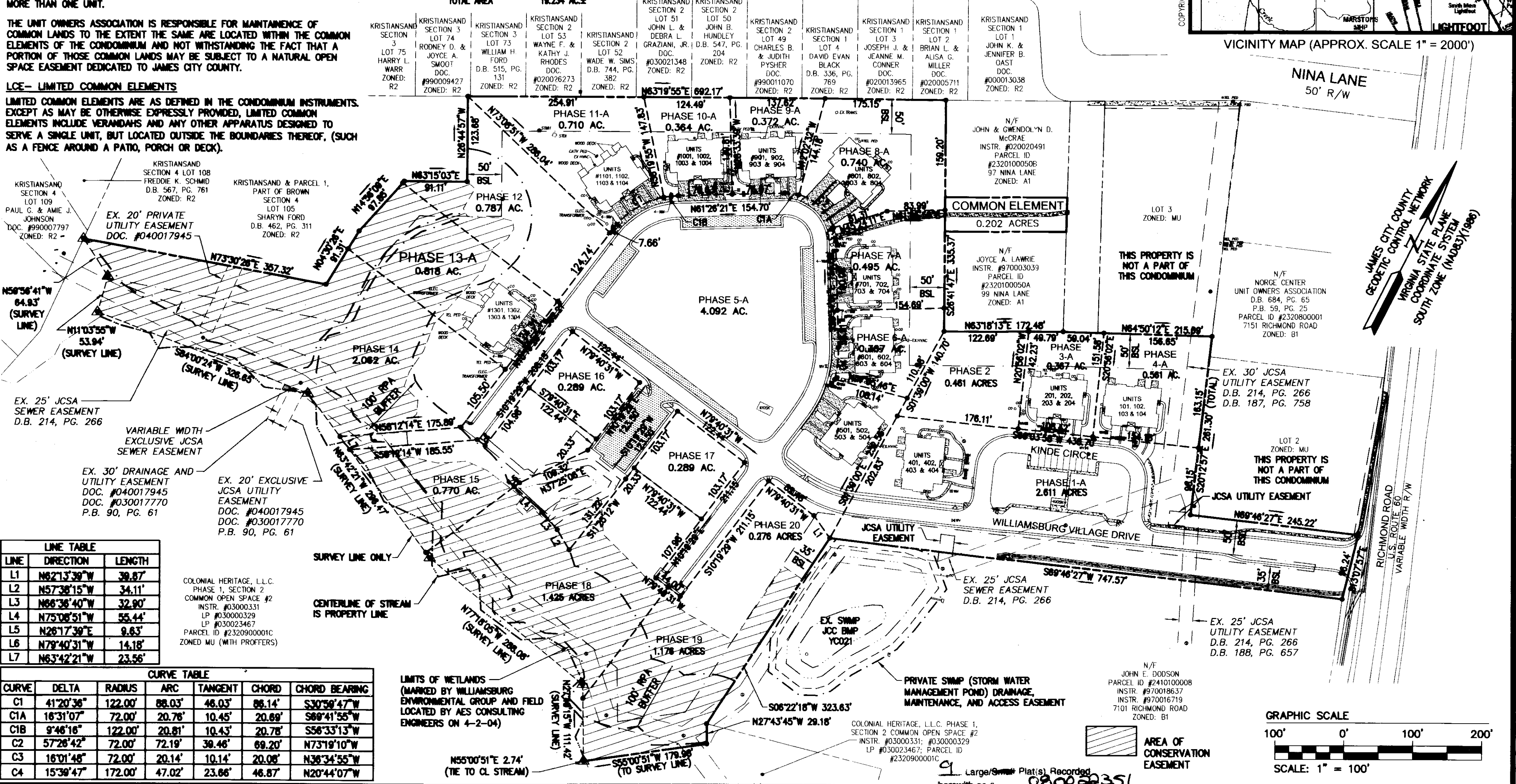
1. SITE IS ZONED M-U, (MIXED USE) - WITH PROFFERS (PROFFERS RECORDED AS INSTRUMENT #040018082)
2. WETLANDS AND LAND WITHIN THE RESOURCE PROTECTION AREAS SHALL REMAIN IN A NATURAL UNDISTURBED STATE EXCEPT FOR THOSE ACTIVITIES PERMITTED BY SECTION 23-9(c)(1) OF THE JAMES CITY COUNTY CODE.
3. NATURAL OPEN SPACE EASEMENTS SHALL REMAIN IN A NATURAL UNDISTURBED STATE EXCEPT FOR THOSE ACTIVITIES REFERENCED ON THE DEED OF EASEMENT.
4. THE PROPERTY AS SHOWN IS ALL OF TAX PARCEL (23-2)(1-50). PROPERTY ADDRESS: 7145 RICHMOND ROAD.
5. THIS PROPERTY LIES IN ZONE "X", (AREAS DETERMINED TO BE OUTSIDE THE 0.2% ANNUAL CHANCE FLOODPLAIN) PER F.L.R.M. #5106SC0110C DATED 9/28/07.
6. PROPERTY REFERENCE: INSTRUMENT #040017945.
7. THIS PLAT HAS BEEN PREPARED WITHOUT THE BENEFIT OF A TITLE REPORT AND IS SUBJECT TO EASEMENTS, SERVITUDES AND COVENANTS OF RECORD.
8. THIS PLAT IS BASED ON AVAILABLE DEEDS AND PLATS OF RECORD AND DOES NOT REPRESENT AN ACTUAL FIELD SURVEY.

RONDANE PLACE

60' R/W



VICINITY MAP (APPROX. SCALE 1" = 2000')



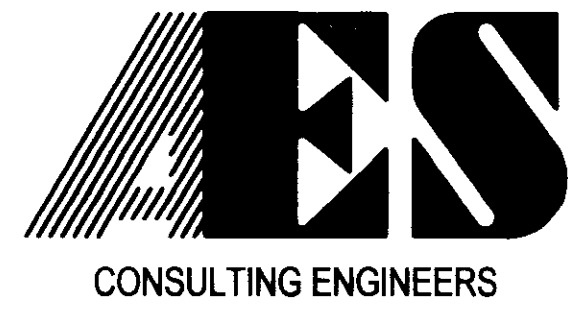
LINE TABLE

LINE	DIRECTION	LENGTH
L1	N82°13'39"W	39.87'
L2	N57°38'15"W	34.11'
L3	N66°36'40"W	32.90'
L4	N75°08'51"W	55.44'
L5	N26°17'39"E	9.63'
L6	N79°40'31"W	14.18'
L7	N63°42'21"W	23.56'

COLONIAL HERITAGE, L.L.C. PHASE 1, SECTION 2 COMMON OPEN SPACE #2 INSTR. #03000331 LP #03000329 LP #030023467 PARCEL ID #2320900001C ZONED MU (WITH PROFFERS)

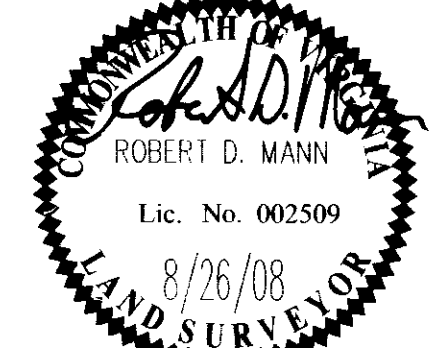
CURVE TABLE

CURVE	DELTA	RADIUS	ARC	TANGENT	CHORD	CHORD BEARING
C1	41°20'36"	122.00'	88.03'	48.03'	86.14'	S30°59'47"W
C1A	16°31'07"	72.00'	20.76'	10.45'	20.69'	S89°41'55"W
C1B	9°46'16"	122.00'	20.81'	10.43'	20.78'	S56°33'13"W
C2	57°28'42"	72.00'	72.19'	39.46'	69.20'	N73°19'10"W
C3	16°01'48"	72.00'	20.14'	10.14'	20.08'	N36°34'55"W
C4	15°39'47"	172.00'	47.02'	23.66'	46.87'	N20°44'07"W



5248 Olde Towne Road, Suite 1
 Williamsburg, Virginia 23188
 (757) 253-0040
 Fax (757) 220-8994

PLAT OF CONDOMINIUM
WILLIAMSBURG VILLAGE AT NORGE CONDOMINIUM
 PHASE 13A
 UNITS #1301, 1302, 1303, AND 1304
 STONEHOUSE DISTRICT COUNTY OF JAMES CITY VIRGINIA

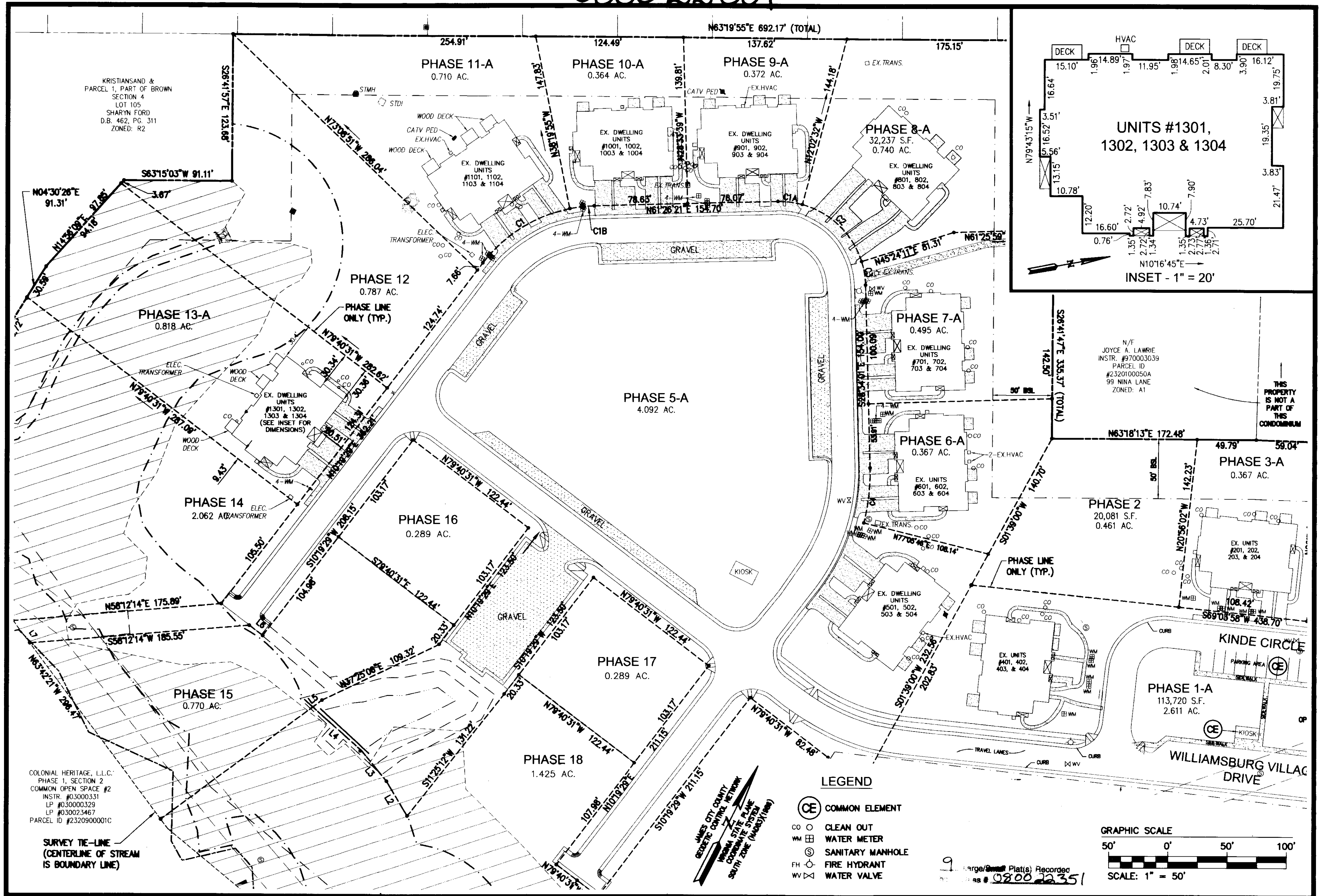


No.	DATE	REVISION / COMMENT / NOTE	BY

Designed	Drawn
VMB/JAG	AWT
Scale	Date
1"=100'	8/26/08
Project No.	9286-2
Drawing No.	1 of 9

S:\ups\9286\02-Norge Condo Plats\dwg\Plats\Record\Phase 13A SH 01.dwg, 8/28/2008 3:42:04 PM, Tony Taylor

080022351

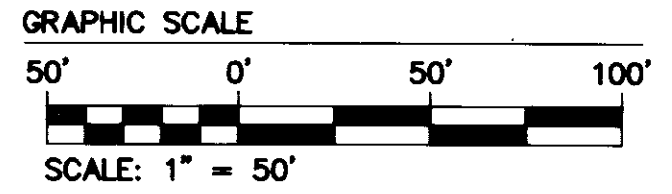


S:\Jobs\928602\Norge Condo Plat\dwg\Plat\Phase 13\Final Condo Plat Ph 13-A\928602Condo Phase 13A SH 02.dwg, 8/28/2008 3:52:31 PM, Tony Taylor

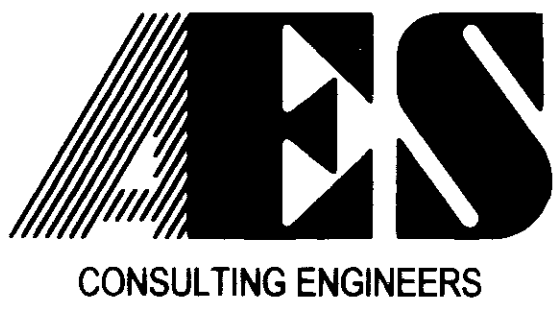
COLONIAL HERITAGE, L.L.C.
 PHASE 1, SECTION 2
 COMMON OPEN SPACE #2
 INSTR. #03000331
 LP #03000329
 LP #030023467
 PARCEL ID #2320900001C

SURVEY TIE-LINE
 (CENTERLINE OF STREAM
 IS BOUNDARY LINE)

- LEGEND**
- CE COMMON ELEMENT
 - CO CLEAN OUT
 - WM WATER METER
 - SM SANITARY MANHOLE
 - FH FIRE HYDRANT
 - WV WATER VALVE



"EXHIBIT 1"



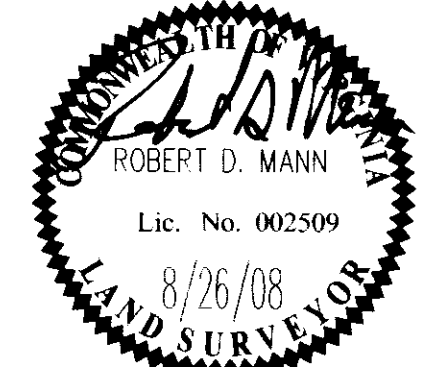
5248 Olde Towne Road, Suite 1
 Williamsburg, Virginia 23188
 (757) 253-0040
 Fax (757) 220-8994

WILLIAMSBURG • RICHMOND • GLOUCESTER • FREDERICKSBURG

PLAT OF CONDOMINIUM

WILLIAMSBURG VILLAGE AT NORGE CONDOMINIUM
 PHASE 13-A
 UNITS #1301, 1302, 1303, AND 1304

STONEHOUSE DISTRICT COUNTY OF JAMES CITY VIRGINIA






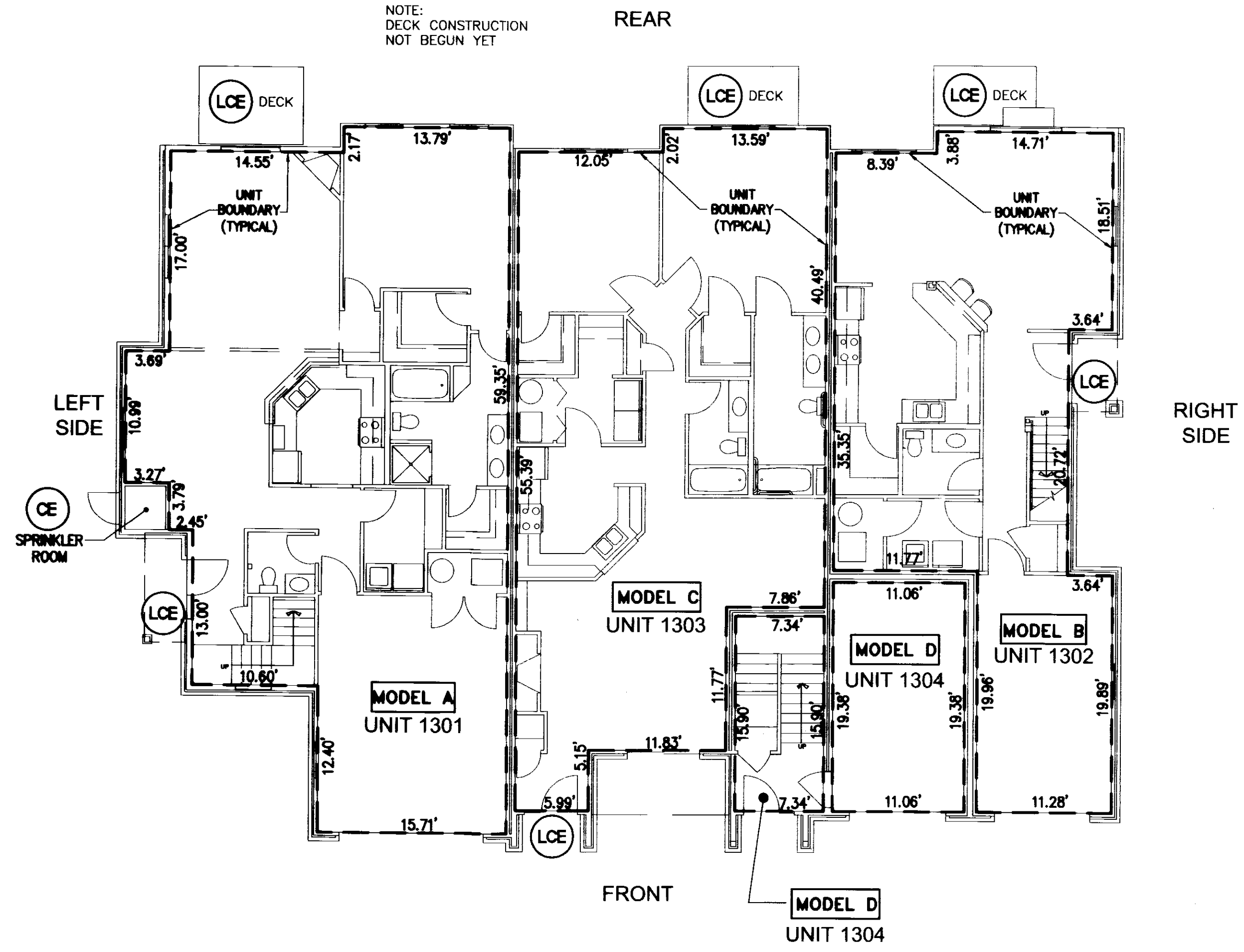
No.	DATE	REVISION / COMMENT / NOTE	BY

City of Williamsburg & County of James City
 Circuit Court: This PLAT was recorded on
 9-5-2008
 at 10:45 AM/PM PB PG
 DOCUMENT # 080022351
 BETSY B. WOOLRIDGE, CLERK
 Betsy B. Woolridge Clerk


Designed VMB/JAG	Drawn AWT
Scale 1"=50'	Date 8/26/08
Project No. 9286-2	
Drawing No. 2 of 9	

080022351

-  COMMON ELEMENT
-  LIMITED COMMON ELEMENT
-  UNIT BOUNDARY

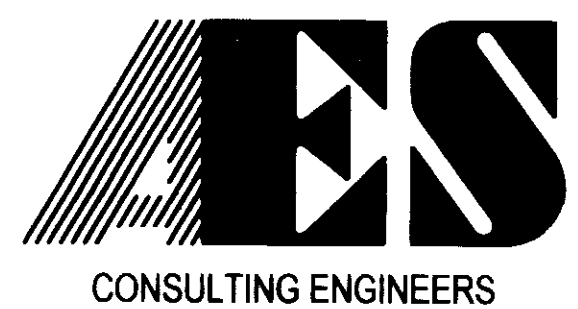


- NOTES:
- COMMON ELEMENTS, LIMITED COMMON ELEMENTS AND UNITS ARE SUBSTANTIALLY COMPLETE.
 - ALL BUILDING DIMENSIONS AND DETAILS SHOWN ARE PER ARCHITECTURAL PLANS PROVIDED TO AES CONSULTING ENGINEERS BY THE DEVELOPER.
 - THE LOWER (HORIZONTAL) BOUNDARY OF EACH UNIT AS SHOWN IN THE PLAN AS LOCATED ON PHASE I IS THE HORIZONTAL PLANE OF THE UPPER SURFACE OF THE CONCRETE FLOOR SLAB OF THOSE UNITS HAVING A FIRST FLOOR COMPONENT, AND IS THE HORIZONTAL PLANE OF THE UPPER SURFACE OF THE UNFINISHED FLOOR (TOP SURFACE OF THE PLYWOOD) FOR THOSE UNITS HAVING COMPONENTS ABOVE THE FIRST FLOOR.
 - FOR TWO-STORY UNITS, THE UPPER (HORIZONTAL) BOUNDARY IS THE PLANE OF THE LOWER SURFACE OF THE DRYWALL THAT IS THE CEILING OF THE SECOND FLOOR, OR ATTIC, OR STORAGE AREA ABOVE THE SECOND FLOOR. NONE OF THE ROOF WILL BE A PART OF THE UNIT. FOR ONE-STORY UNITS, THE UPPER BOUNDARY IS THE PLANE OF THE LOWER SURFACE OF THE DRYWALL THAT IS THE CEILING OF THE UNIT.
 - THE VERTICAL (SIDE) BOUNDARIES OF THE UNIT SHALL BE THE VERTICAL PLANE OF THE UNFINISHED INNER SURFACE OF THE DRYWALL ON THE INSIDE OF THE PERIMETER WALLS OF THE UNIT, EXTENDED TO INTERSECTIONS WITH EACH OTHER AND WITH THE UPPER AND LOWER BOUNDARIES. WHENEVER THERE IS AN OVERHANG CREATED BY A SECOND FLOOR EXTENDING OUT BEYOND THE VERTICAL PLANE OF THE EXTERIOR OF THE FIRST FLOOR, THE VERTICAL (SIDE) BOUNDARY OF THE FIRST FLOOR AND THE VERTICAL BOUNDARY OF THE SECOND FLOOR SHALL BE JOINED BY THE UPPER PLANE (INTERIOR) OF THE SOFFIT.
 - LOWER, UPPER AND SIDE BOUNDARIES ARE MORE FULLY DESCRIBED IN THE DECLARATION OF CONDOMINIUM.
 - THE INTERIOR WALLS AND ELEMENTS AS SHOWN HEREON WERE TAKEN DIRECTLY FROM ARCHITECTURAL DRAWINGS PROVIDED BY THE DEVELOPER AND ARE INTENDED FOR REFERENCE PURPOSES ONLY. INTERIOR WALLS AND ELEMENTS HAVE NOT BEEN FIELD VERIFIED. THE SURVEYOR MAKES NO GUARANTEES THAT UNIT INTERIORS ARE CONSTRUCTED AS SHOWN.

 **FIRST FLOOR PLAN** SCALE: 1/8" = 1'
MODELS A, B, C & D

9 Large Plat(s) Recorded
 herewith as # 080022351

S:\Jobs\9286\02-Norge Condo Plats\dwg\Plats\Record\Phase 13\Final Condo Plat Ph 13-A\928602Condo Phase 13A Sh 03.dwg, 8/28/2008 3:40:41 PM, Tony, Taylor



5248 Olde Towne Road, Suite 1
 Williamsburg, Virginia 23188
 (757) 253-0040
 Fax (757) 220-8994

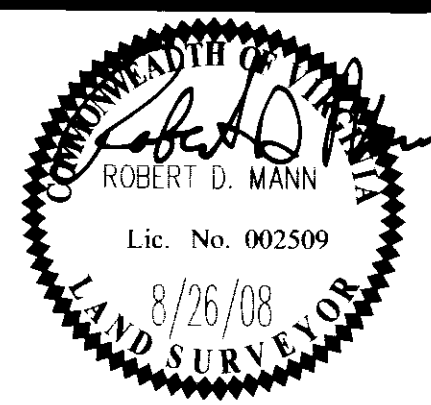
WILLIAMSBURG • RICHMOND • GLOUCESTER • FREDERICKSBURG

"EXHIBIT 1"

PLAN OF CONDOMINIUM

WILLIAMSBURG VILLAGE AT NORGE CONDOMINIUM
 PHASE 13-A
 UNITS #1301, 1302, 1303, AND 1304

STONEHOUSE DISTRICT COUNTY OF JAMES CITY VIRGINIA






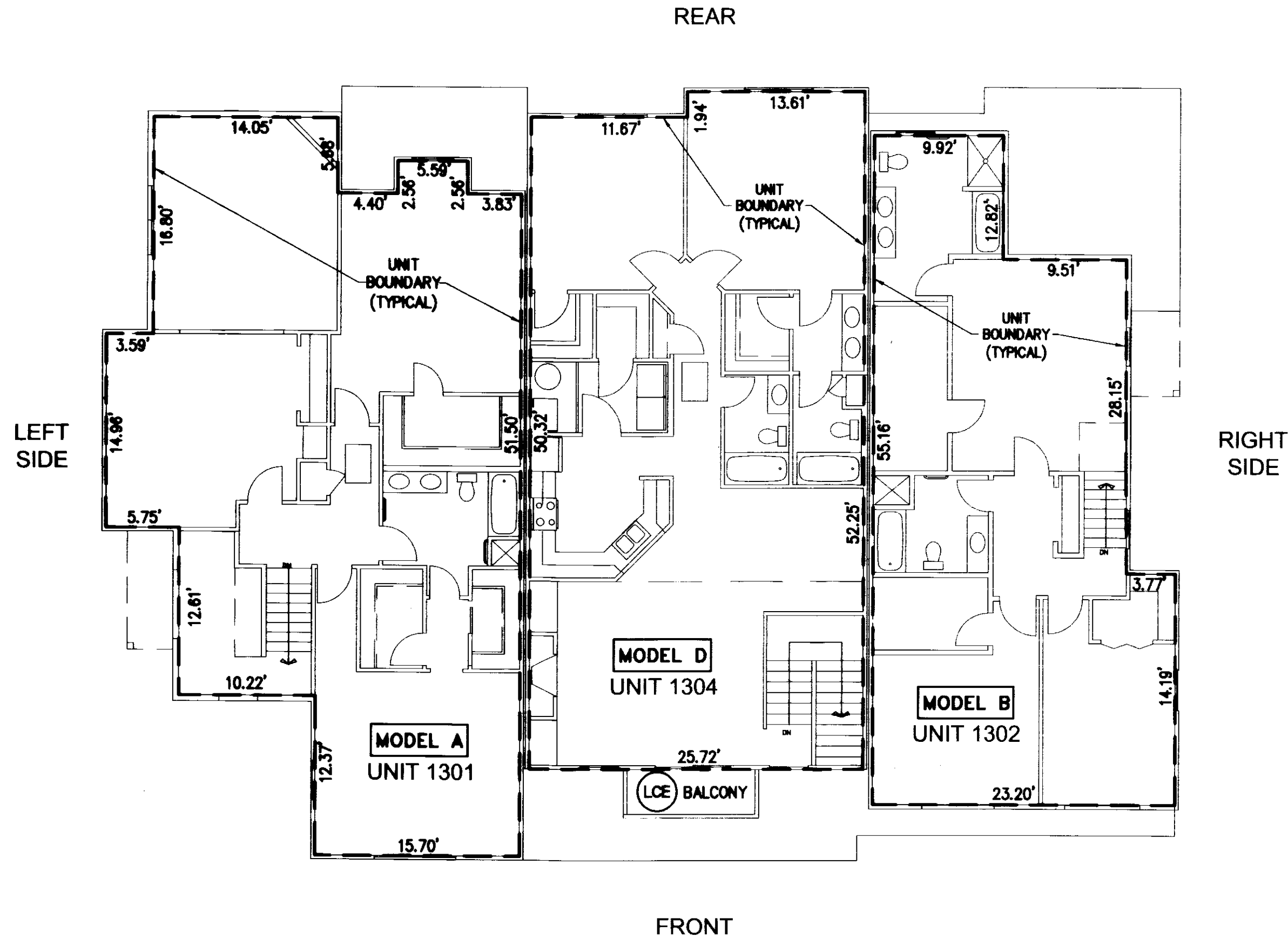
No.	DATE	REVISION / COMMENT / NOTE	BY

City of Williamsburg & County of James City
 Circuit Court: This PLAT was recorded on
 9-5-2008
 at 10:45 AM, PG 1 PG 1
 DOCUMENT # 080022351
 BETSY B. WOOLRIDGE, CLERK
 Betsy B. Woolridge Clerk

Designed	Drawn
VMB/JAG	AWT
Scale	Date
1/8"=1'	8/26/08
Project No.	
9286-2	
Drawing No.	
3 of 9	

080022351

-  COMMON ELEMENT
-  LIMITED COMMON ELEMENT
-  UNIT BOUNDARY



NOTES:

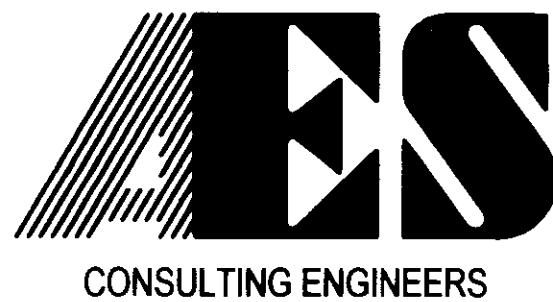
1. COMMON ELEMENTS, LIMITED COMMON ELEMENTS AND UNITS ARE SUBSTANTIALLY COMPLETE.
2. ALL BUILDING DIMENSIONS AND DETAILS SHOWN ARE PER ARCHITECTURAL PLANS PROVIDED TO AES CONSULTING ENGINEERS BY THE DEVELOPER.
3. THE LOWER (HORIZONTAL) BOUNDARY OF EACH UNIT AS SHOWN IN THE PLAN AS LOCATED ON PHASE 1 IS THE HORIZONTAL PLANE OF THE UPPER SURFACE OF THE CONCRETE FLOOR SLAB OF THOSE UNITS HAVING A FIRST FLOOR COMPONENT, AND IS THE HORIZONTAL PLANE OF THE UPPER SURFACE OF THE UNFINISHED FLOOR (TOP SURFACE OF THE PLYWOOD) FOR THOSE UNITS HAVING COMPONENTS ABOVE THE FIRST FLOOR.
4. FOR TWO-STORY UNITS, THE UPPER (HORIZONTAL) BOUNDARY IS THE PLANE OF THE LOWER SURFACE OF THE DRYWALL THAT IS THE CEILING OF THE SECOND FLOOR, OR ATTIC, OR STORAGE AREA ABOVE THE SECOND FLOOR. NONE OF THE ROOF WILL BE A PART OF THE UNIT. FOR ONE-STORY UNITS, THE UPPER BOUNDARY IS THE PLANE OF THE LOWER SURFACE OF THE DRYWALL THAT IS THE CEILING OF THE UNIT.
5. THE VERTICAL (SIDE) BOUNDARIES OF THE UNIT SHALL BE THE VERTICAL PLANE OF THE UNFINISHED INNER SURFACE OF THE DRYWALL ON THE INSIDE OF THE PERIMETER WALLS OF THE UNIT, EXTENDED TO INTERSECTIONS WITH EACH OTHER AND WITH THE UPPER AND LOWER BOUNDARIES. WHENEVER THERE IS AN OVERHANG CREATED BY A SECOND FLOOR EXTENDING OUT BEYOND THE VERTICAL PLANE OF THE EXTERIOR OF THE FIRST FLOOR, THE VERTICAL (SIDE) BOUNDARY OF THE FIRST FLOOR AND THE VERTICAL BOUNDARY OF THE SECOND FLOOR SHALL BE JOINED BY THE UPPER PLANE (INTERIOR) OF THE SOFFIT.
6. LOWER, UPPER AND SIDE BOUNDARIES ARE MORE FULLY DESCRIBED IN THE DECLARATION OF CONDOMINIUM.
7. THE INTERIOR WALLS AND ELEMENTS AS SHOWN HEREON WERE TAKEN DIRECTLY FROM ARCHITECTURAL DRAWINGS PROVIDED BY THE DEVELOPER AND ARE INTENDED FOR REFERENCE PURPOSES ONLY. INTERIOR WALLS AND ELEMENTS HAVE NOT BEEN FIELD VERIFIED. THE SURVEYOR MAKES NO GUARANTEES THAT UNIT INTERIORS ARE CONSTRUCTED AS SHOWN.



SECOND FLOOR PLAN SCALE: 1/8" = 1'
MODELS A, B & D

9 Large/Small Plat(s) Recorded
herewith as 080022351

S:\Jobs\9286\02-Norge Condo Plats\dwg\Plats\Record\Phase 13\Final Condo Plat Ph 13-A\928602Condo Phase 13A Sh 04.dwg, 8/28/2008 3:39:46 PM, Tony Taylor



5248 Olde Towne Road, Suite 1
Williamsburg, Virginia 23188
(757) 253-0040
Fax (757) 220-8994

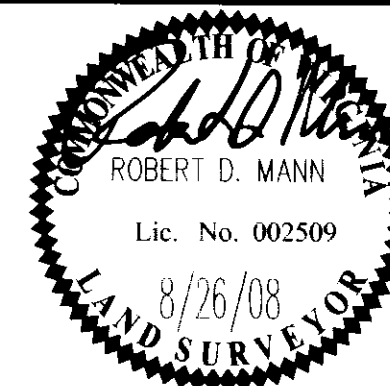
WILLIAMSBURG • RICHMOND • GLOUCESTER • FREDERICKSBURG

"EXHIBIT 1"

PLAN OF CONDOMINIUM

WILLIAMSBURG VILLAGE AT NORGE CONDOMINIUM
PHASE 13-A
UNITS #1301, 1302, 1303, AND 1304




STONEHOUSE DISTRICT COUNTY OF JAMES CITY VIRGINIA

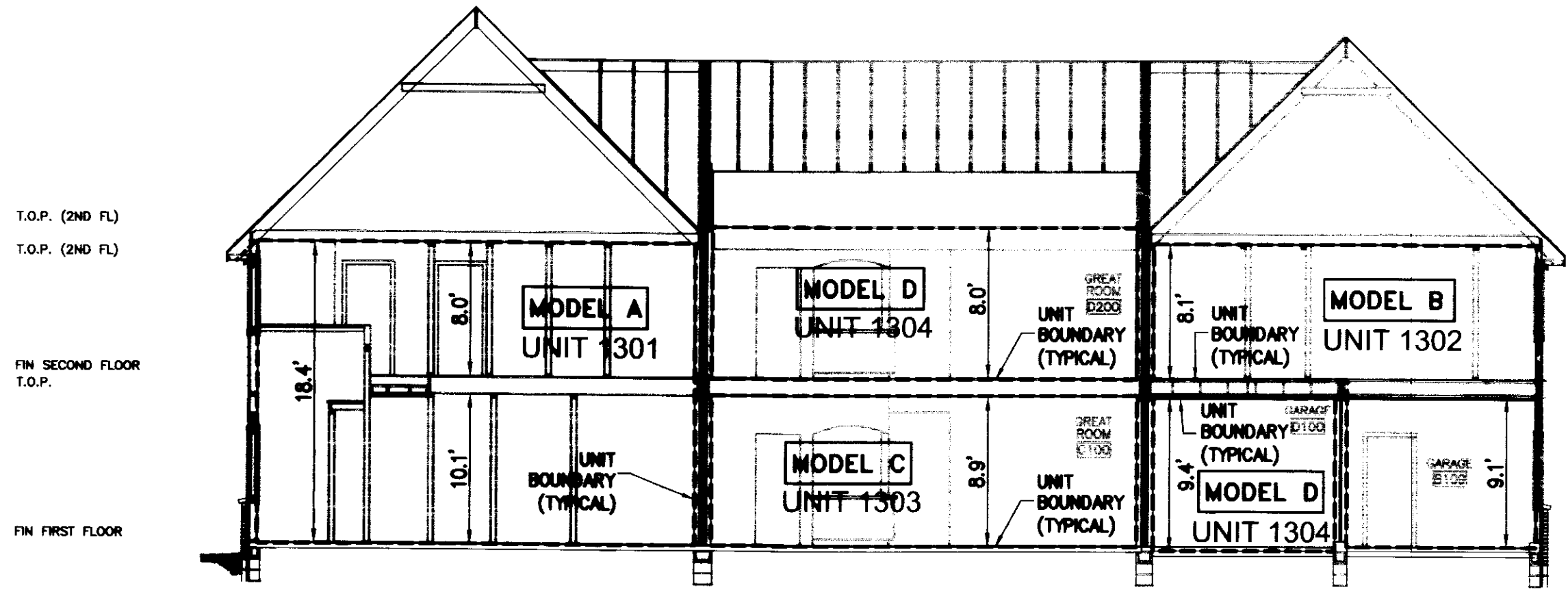


City of Williamsburg & County of James City			
Circuit Court		This PLAT was recorded on	
		9-5-2008	
		at 10:45 AM/PM, PB PG	
		DOCUMENT # 080022351	
		BETSY B. WOOLRIDGE, CLERK	
		<i>Betsy Woolridge</i> Clerk	
No.	DATE	REVISION / COMMENT / NOTE	BY

Designed YMB/JAG	Drawn AWT
Scale 1/8"=1'	Date 8/26/08
Project No. 9286-2	
Drawing No. 4 of 9	

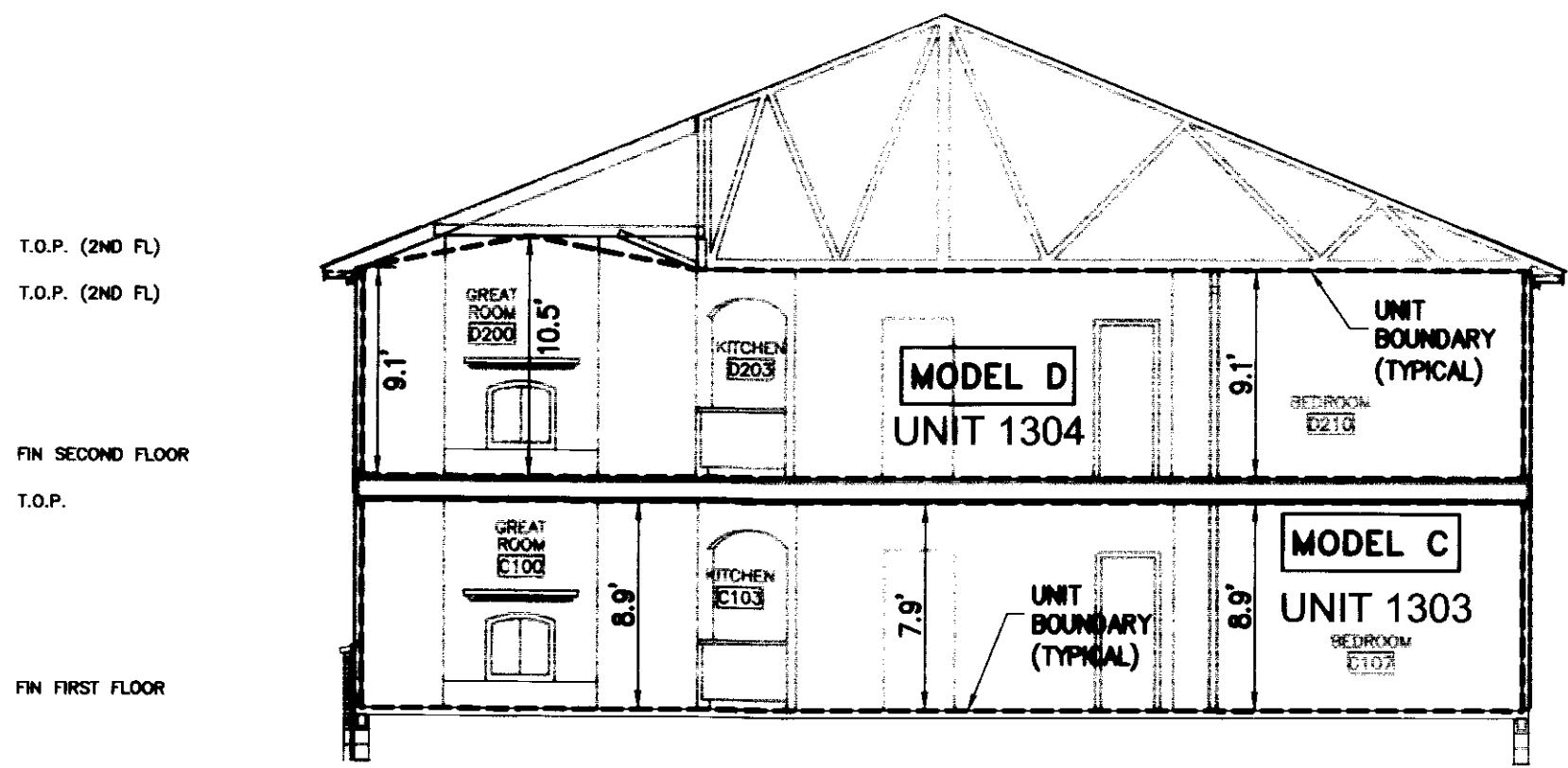
080022351

-  COMMON ELEMENT
-  LIMITED COMMON ELEMENT
-  UNIT BOUNDARY



SECTION - MODELS A, B, C & D (TYPICAL)
1/8" = 1'-0"

- NOTES:
- COMMON ELEMENTS, LIMITED COMMON ELEMENTS AND UNITS ARE SUBSTANTIALLY COMPLETE.
 - ALL BUILDING DIMENSIONS AND DETAILS SHOWN ARE PER ARCHITECTURAL PLANS PROVIDED TO AES CONSULTING ENGINEERS BY THE DEVELOPER.
 - THE LOWER (HORIZONTAL) BOUNDARY OF EACH UNIT AS SHOWN IN THE PLAN AS LOCATED ON PHASE I IS THE HORIZONTAL PLANE OF THE UPPER SURFACE OF THE CONCRETE FLOOR SLAB OF THOSE UNITS HAVING A FIRST FLOOR COMPONENT, AND IS THE HORIZONTAL PLANE OF THE UPPER SURFACE OF THE UNFINISHED FLOOR (TOP SURFACE OF THE PLYWOOD) FOR THOSE UNITS HAVING COMPONENTS ABOVE THE FIRST FLOOR.
 - FOR TWO-STORY UNITS, THE UPPER (HORIZONTAL) BOUNDARY IS THE PLANE OF THE LOWER SURFACE OF THE DRYWALL THAT IS THE CEILING OF THE SECOND FLOOR, OR ATTIC, OR STORAGE AREA ABOVE THE SECOND FLOOR. NONE OF THE ROOF WILL BE A PART OF THE UNIT. FOR ONE-STORY UNITS, THE UPPER BOUNDARY IS THE PLANE OF THE LOWER SURFACE OF THE DRYWALL THAT IS THE CEILING OF THE UNIT.
 - THE VERTICAL (SIDE) BOUNDARIES OF THE UNIT SHALL BE THE VERTICAL PLANE OF THE UNFINISHED INNER SURFACE OF THE DRYWALL ON THE INSIDE OF THE PERIMETER WALLS OF THE UNIT, EXTENDED TO INTERSECTIONS WITH EACH OTHER AND WITH THE UPPER AND LOWER BOUNDARIES. WHENEVER THERE IS AN OVERHANG CREATED BY A SECOND FLOOR, THE EXTENDING OUT BEYOND THE VERTICAL PLANE OF THE EXTERIOR OF THE FIRST FLOOR, THE VERTICAL (SIDE) BOUNDARY OF THE FIRST FLOOR AND THE VERTICAL BOUNDARY OF THE SECOND FLOOR SHALL BE JOINED BY THE UPPER PLANE (INTERIOR) OF THE SOFFIT.
 - LOWER, UPPER AND SIDE BOUNDARIES ARE MORE FULLY DESCRIBED IN THE DECLARATION OF CONDOMINIUM.
 - THE INTERIOR WALLS AND ELEMENTS AS SHOWN HEREON WERE TAKEN DIRECTLY FROM ARCHITECTURAL DRAWINGS PROVIDED BY THE DEVELOPER AND ARE INTENDED FOR REFERENCE PURPOSES ONLY. INTERIOR WALLS AND ELEMENTS HAVE NOT BEEN FIELD VERIFIED. THE SURVEYOR MAKES NO GUARANTEES THAT UNIT INTERIORS ARE CONSTRUCTED AS SHOWN.



RIGHT SIDE SECTION - MODELS C & D
1/8" = 1'-0"

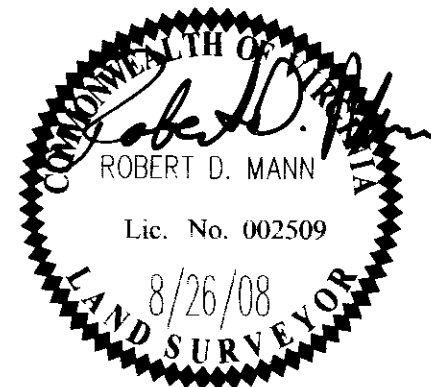
9 Large/Sheet Plat(s) Recorded
herewith as # 080022351

"EXHIBIT 1"

PLAN OF CONDOMINIUM

WILLIAMSBURG VILLAGE AT NORGE CONDOMINIUM
PHASE 13-A
UNITS #1301, 1302, 1303, AND 1304

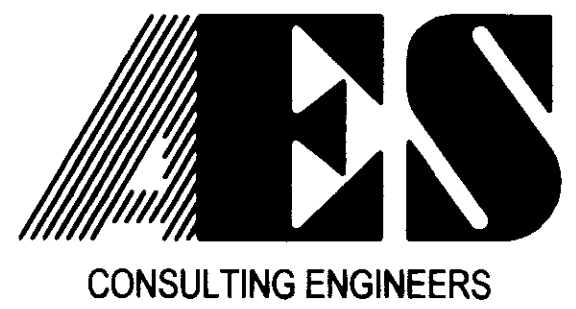
STONEHOUSE DISTRICT COUNTY OF JAMES CITY VIRGINIA



No.	DATE	REVISION / COMMENT / NOTE	BY

City of Williamsburg & County of James City
Circuit Court: This PLAT was recorded on
9-5-2008
at 10:45 AM/PM, PG _____
DOCUMENT # 080022351
BETSY B. WOOLRIDGE, CLERK
Betsy B. Woolridge Clerk

Designed YMB/JAG	Drawn AWT
Scale 1/8"=1'	Date 8/26/08
Project No. 9286-2	
Drawing No. 5 of 9	






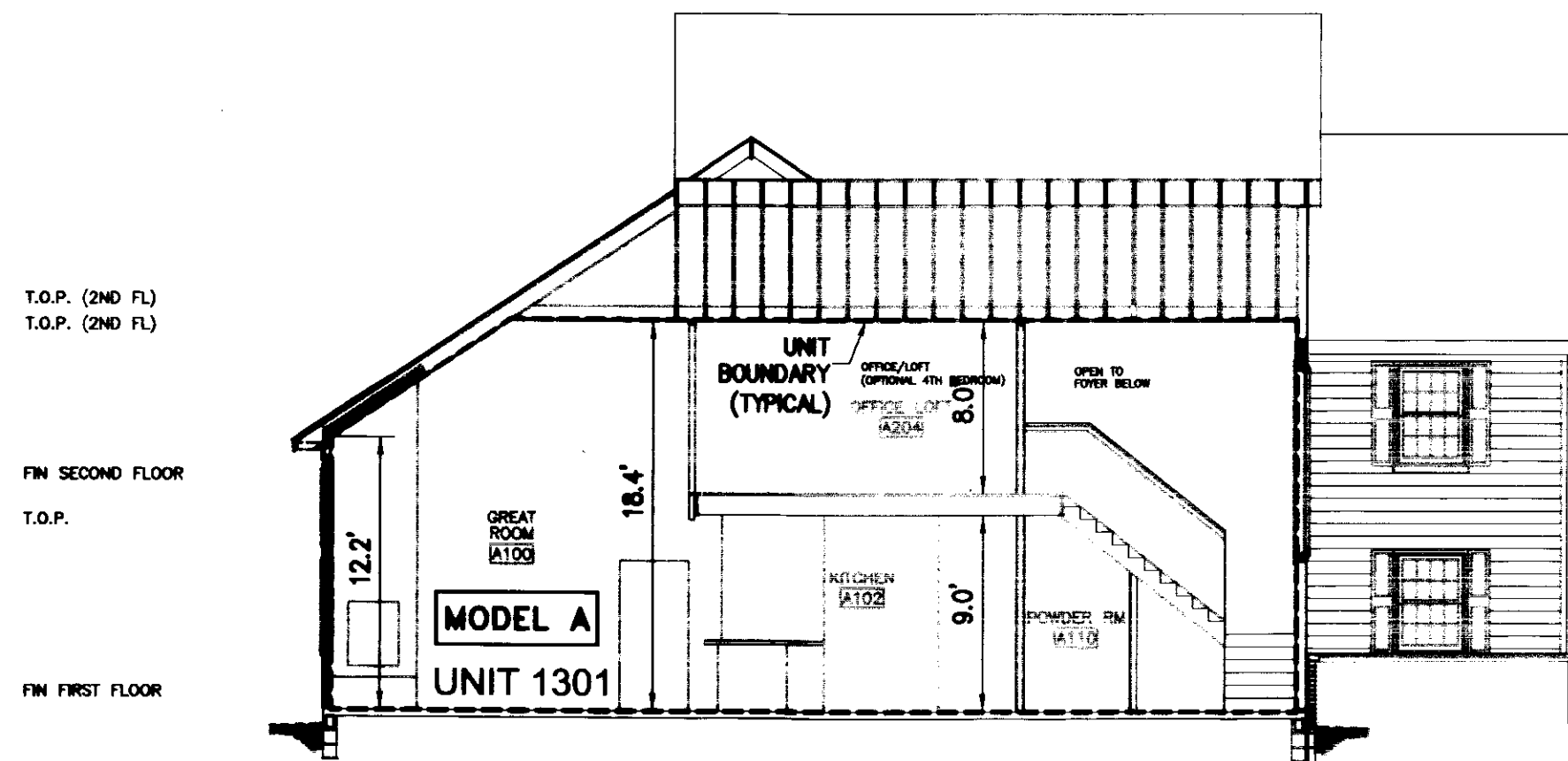
5248 Olde Towne Road, Suite 1
Williamsburg, Virginia 23188
(757) 253-0040
Fax (757) 220-8994

WILLIAMSBURG • RICHMOND • GLOUCESTER • FREDERICKSBURG

S:\Jobs\9286\02-Norge Condo Plats\dwg\Plats\Record\Phase 13\Final Condo Plat Ph 13-A\928602Condo Phase 13A Sh 05.dwg, 8/28/2008 3:39:20 PM, Tony Taylor

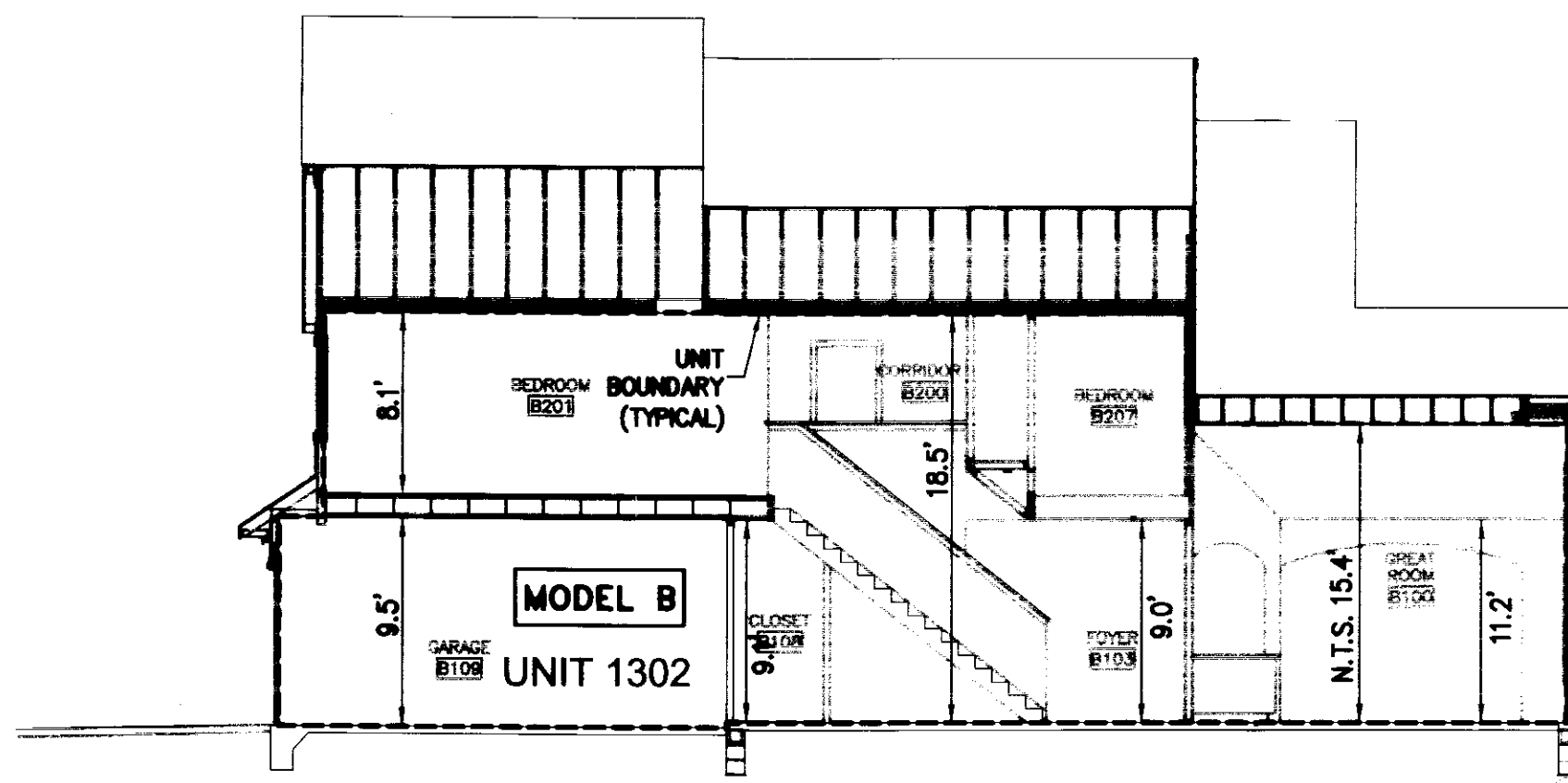
080022351

-  COMMON ELEMENT
-  LIMITED COMMON ELEMENT
-  UNIT BOUNDARY
- N.T.S. NOT TO SCALE



LEFT SECTION - MODEL A

1/8" = 1'-0"



RIGHT SECTION - MODEL B

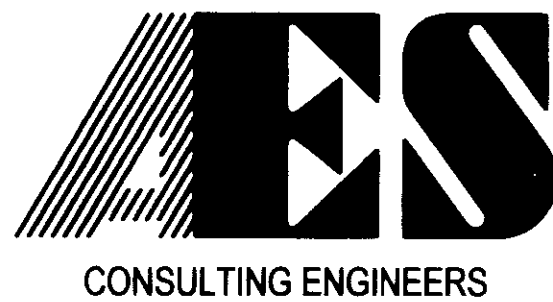
1/8" = 1'-0"

NOTES:

1. COMMON ELEMENTS, LIMITED COMMON ELEMENTS AND UNITS ARE SUBSTANTIALLY COMPLETE.
2. ALL BUILDING DIMENSIONS AND DETAILS SHOWN ARE PER ARCHITECTURAL PLANS PROVIDED TO AES CONSULTING ENGINEERS BY THE DEVELOPER.
3. THE LOWER (HORIZONTAL) BOUNDARY OF EACH UNIT AS SHOWN IN THE PLAN AS LOCATED ON PHASE 1 IS THE HORIZONTAL PLANE OF THE UPPER SURFACE OF THE CONCRETE FLOOR SLAB OF THOSE UNITS HAVING A FIRST FLOOR COMPONENT, AND IS THE HORIZONTAL PLANE OF THE UPPER SURFACE OF THE UNFINISHED FLOOR (TOP SURFACE OF THE PLYWOOD) FOR THOSE UNITS HAVING COMPONENTS ABOVE THE FIRST FLOOR.
4. FOR TWO-STORY UNITS, THE UPPER (HORIZONTAL) BOUNDARY IS THE PLANE OF THE LOWER SURFACE OF THE DRYWALL THAT IS THE CEILING OF THE SECOND FLOOR, OR ATTIC, OR STORAGE AREA ABOVE THE SECOND FLOOR. NONE OF THE ROOF WILL BE A PART OF THE UNIT. FOR ONE-STORY UNITS, THE UPPER BOUNDARY IS THE PLANE OF THE LOWER SURFACE OF THE DRYWALL THAT IS THE CEILING OF THE UNIT.
5. THE VERTICAL (SIDE) BOUNDARIES OF THE UNIT SHALL BE THE VERTICAL PLANE OF THE UNFINISHED INNER SURFACE OF THE DRYWALL ON THE INSIDE OF THE PERIMETER WALLS OF THE UNIT, EXTENDED TO INTERSECTIONS WITH EACH OTHER AND WITH THE UPPER AND LOWER BOUNDARIES, WHENEVER THERE IS AN OVERHANG CREATED BY A SECOND FLOOR EXTENDING OUT BEYOND THE VERTICAL PLANE OF THE EXTERIOR OF THE FIRST FLOOR, THE VERTICAL (SIDE) BOUNDARY OF THE FIRST FLOOR AND THE VERTICAL BOUNDARY OF THE SECOND FLOOR SHALL BE JOINED BY THE UPPER PLANE (INTERIOR) OF THE SOFFIT.
6. LOWER, UPPER AND SIDE BOUNDARIES ARE MORE FULLY DESCRIBED IN THE DECLARATION OF CONDOMINIUM.
7. THE INTERIOR WALLS AND ELEMENTS AS SHOWN HEREON WERE TAKEN DIRECTLY FROM ARCHITECTURAL DRAWINGS PROVIDED BY THE DEVELOPER AND ARE INTENDED FOR REFERENCE PURPOSES ONLY. INTERIOR WALLS AND ELEMENTS HAVE NOT BEEN FIELD VERIFIED. THE SURVEYOR MAKES NO GUARANTEES THAT UNIT INTERIORS ARE CONSTRUCTED AS SHOWN.

9 Large/Small Plats: Recorded
herewith as # 080022351

S:\Jobs\9286\02-Norge Condo Plats\dwg\Plats\Record\Phase 13\Final Condo Plat Ph 13-A\928602Condo Phase 13A SH 06.dwg, 8/28/2008 3:38:33 PM, Tony Taylor



5248 Olde Towne Road, Suite 1
Williamsburg, Virginia 23188
(757) 253-0040
Fax (757) 220-8994

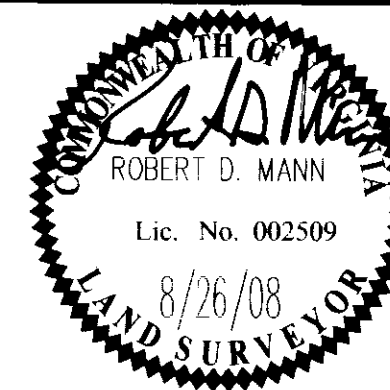
WILLIAMSBURG • RICHMOND • GLOUCESTER • FREDERICKSBURG

"EXHIBIT 1"

PLAN OF CONDOMINIUM

WILLIAMSBURG VILLAGE AT NORGE CONDOMINIUM
PHASE 13-A
UNITS #1301, 1302, 1303, AND 1304

STONEHOUSE DISTRICT COUNTY OF JAMES CITY VIRGINIA

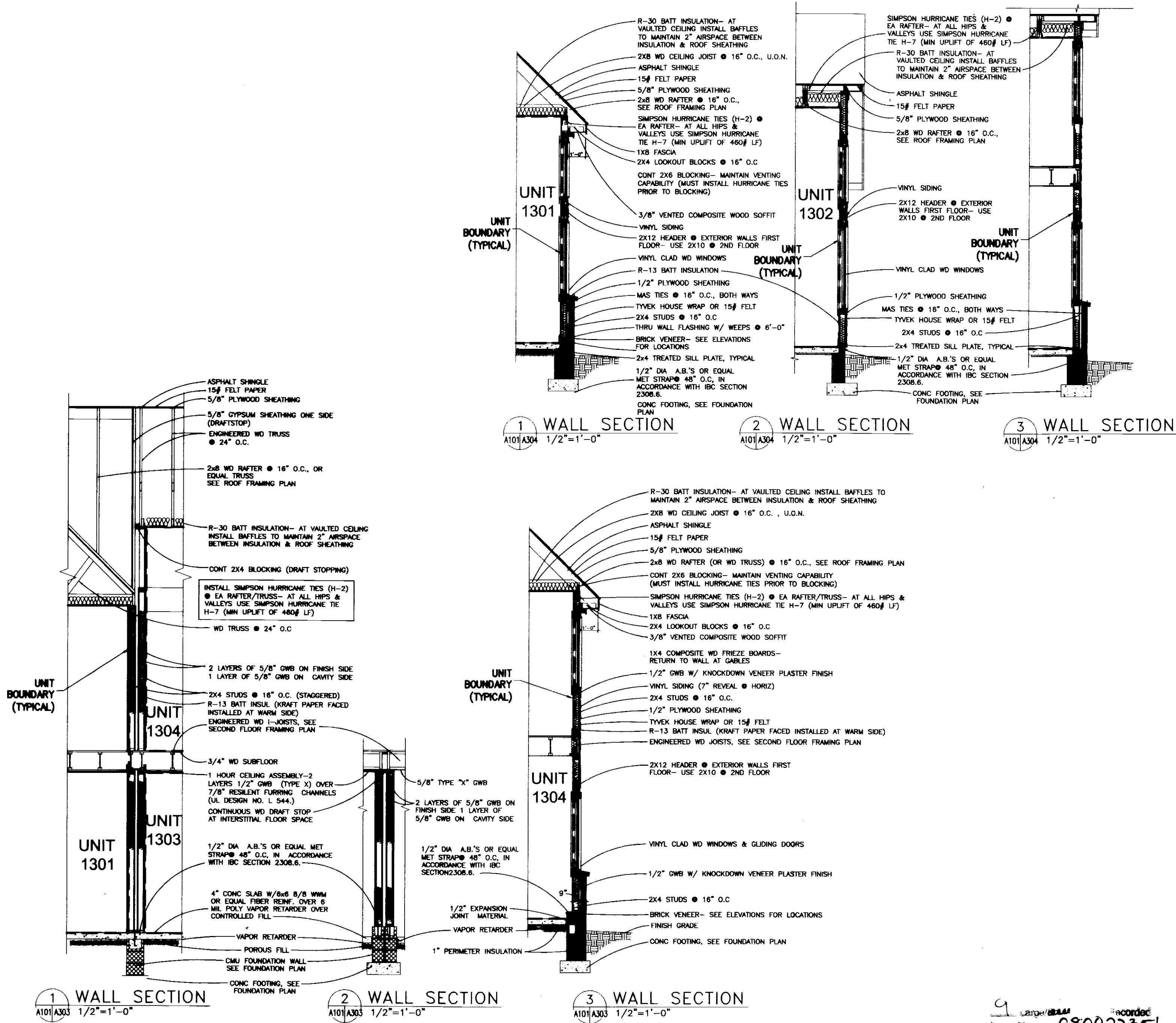


City of Williamsburg & County of James City		
Circuit Court: This PLAT was recorded on		
at 10:45 AM/PM, PG 5-2008		
DOCUMENT # 080022351		
BETSY B. WOOLRIDGE, CLERK		
<i>Betsy B. Woolridge</i> Clerk		
No.	DATE	REVISION / COMMENT / NOTE
		BY

Designed VMB/JAG	Drawn AWT
Scale 1/8"=1'	Date 8/26/08
Project No. 9286-2	
Drawing No. 6 of 9	

080022351

S:\Jobs\9286\02-Norge Condo Plat\dwg\Plats\Record\Phase 13\Final Condo Plat Ph. 13-A\928602Condo Phase 13A Sh.07.dwg, 8/28/2008 3:38:00 PM, Tony.Taylor



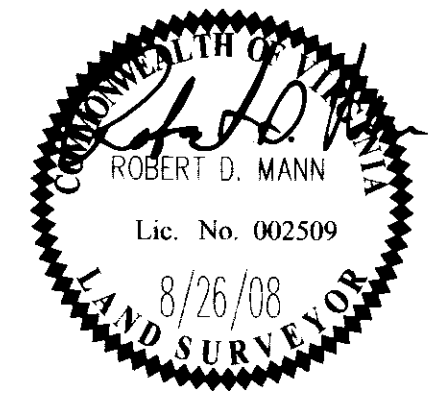
COMMON ELEMENT
 LIMITED COMMON ELEMENT
 UNIT BOUNDARY

- NOTES:
- COMMON ELEMENTS, LIMITED COMMON ELEMENTS AND UNITS ARE SUBSTANTIALLY COMPLETE.
 - ALL BUILDING DIMENSIONS AND DETAILS SHOWN ARE PER ARCHITECTURAL PLANS PROVIDED TO AES CONSULTING ENGINEERS BY THE DEVELOPER.
 - THE LOWER (HORIZONTAL) BOUNDARY OF EACH UNIT AS SHOWN IN THE PLAN AS LOCATED ON PHASE I IS THE HORIZONTAL PLANE OF THE UPPER SURFACE OF THE CONCRETE FLOOR SLAB OF THOSE UNITS HAVING A FIRST FLOOR COMPONENT, AND IS THE HORIZONTAL PLANE OF THE UPPER SURFACE OF THE UNFINISHED FLOOR (TOP SURFACE OF THE PLYWOOD) FOR THOSE UNITS HAVING COMPONENTS ABOVE THE FIRST FLOOR.
 - FOR TWO-STORY UNITS, THE UPPER (HORIZONTAL) BOUNDARY IS THE PLANE OF THE LOWER SURFACE OF THE DRYWALL THAT IS THE CEILING OF THE SECOND FLOOR, OR ATTIC, OR STORAGE AREA ABOVE THE SECOND FLOOR. NONE OF THE ROOF WILL BE A PART OF THE UNIT. FOR ONE-STORY UNITS, THE UPPER BOUNDARY IS THE PLANE OF THE LOWER SURFACE OF THE DRYWALL THAT IS THE CEILING OF THE UNIT.
 - THE VERTICAL (SIDE) BOUNDARIES OF THE UNIT SHALL BE THE VERTICAL PLANE OF THE UNFINISHED INNER SURFACE OF THE DRYWALL ON THE INSIDE OF THE PERIMETER WALLS OF THE UNIT, EXTENDED TO INTERSECTIONS WITH EACH OTHER AND WITH THE UPPER AND LOWER BOUNDARIES. WHENEVER THERE IS AN OVERHANG CREATED BY A SECOND FLOOR EXTENDING OUT BEYOND THE VERTICAL PLANE OF THE EXTERIOR OF THE FIRST FLOOR, THE VERTICAL (SIDE) BOUNDARY OF THE FIRST FLOOR AND THE VERTICAL BOUNDARY OF THE SECOND FLOOR SHALL BE JOINED BY THE UPPER PLANE (INTERIOR) OF THE SOFFIT.
 - LOWER, UPPER AND SIDE BOUNDARIES ARE MORE FULLY DESCRIBED IN THE DECLARATION OF CONDOMINIUM.
 - THE WALL SECTIONS AS SHOWN HEREON WERE TAKEN FROM ARCHITECTURAL DRAWINGS PROVIDED BY THE DEVELOPER. THE INTENDED PURPOSE IS TO ILLUSTRATE TYPICAL UNIT BOUNDARIES ONLY. ALL OTHER INFORMATION INCLUDING CONSTRUCTION MATERIALS AND METHODS IS SHOWN FOR REFERENCE PURPOSES ONLY AND HAS NOT BEEN FIELD VERIFIED. THE SURVEYOR MAKES NO GUARANTEES AS TO BUILDING METHODS, MATERIALS, OR CONSTRUCTION.

9
 080022351
 recorded

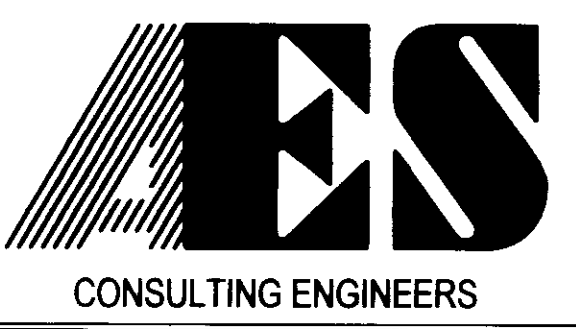
"EXHIBIT 1"

PLAN OF CONDOMINIUM
WILLIAMSBURG VILLAGE AT NORGE CONDOMINIUM
 PHASE 13-A
 UNITS #1301, 1302, 1303, AND 1304
 STONEHOUSE DISTRICT COUNTY OF JAMES CITY VIRGINIA



City of Williamsburg & County of James City			
Circuit Court: This PLAT was recorded on			
at 10:45 AM on 8/26/08			
DOCUMENT # 080022351			
BETSY B. WOOLRIDGE, CLERK			
		Clerk	
No.	DATE	REVISION / COMMENT / NOTE	BY




Designed VMB/JAG	Drawn AWT
Scale 1/2"=1'	Date 8/26/08
Project No. 9286-2	
Drawing No. 7 of 9	

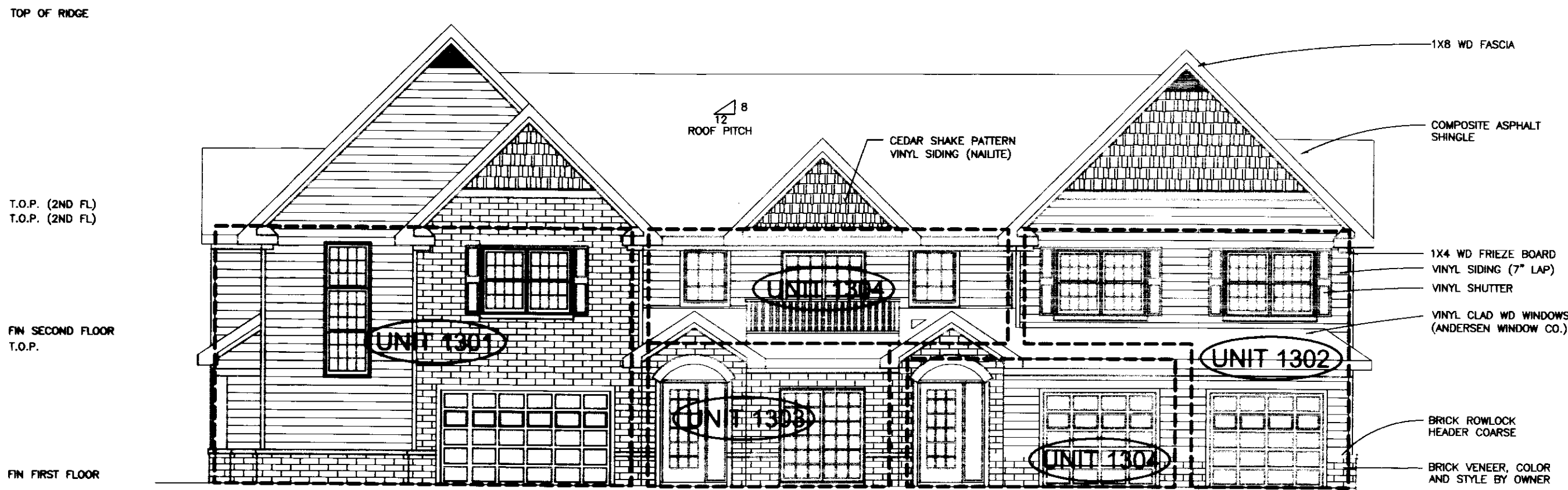


5248 Olde Towne Road, Suite 1
 Williamsburg, Virginia 23188
 (757) 253-0040
 Fax (757) 220-8994

WILLIAMSBURG • RICHMOND • GLOUCESTER • FREDERICKSBURG

080022351

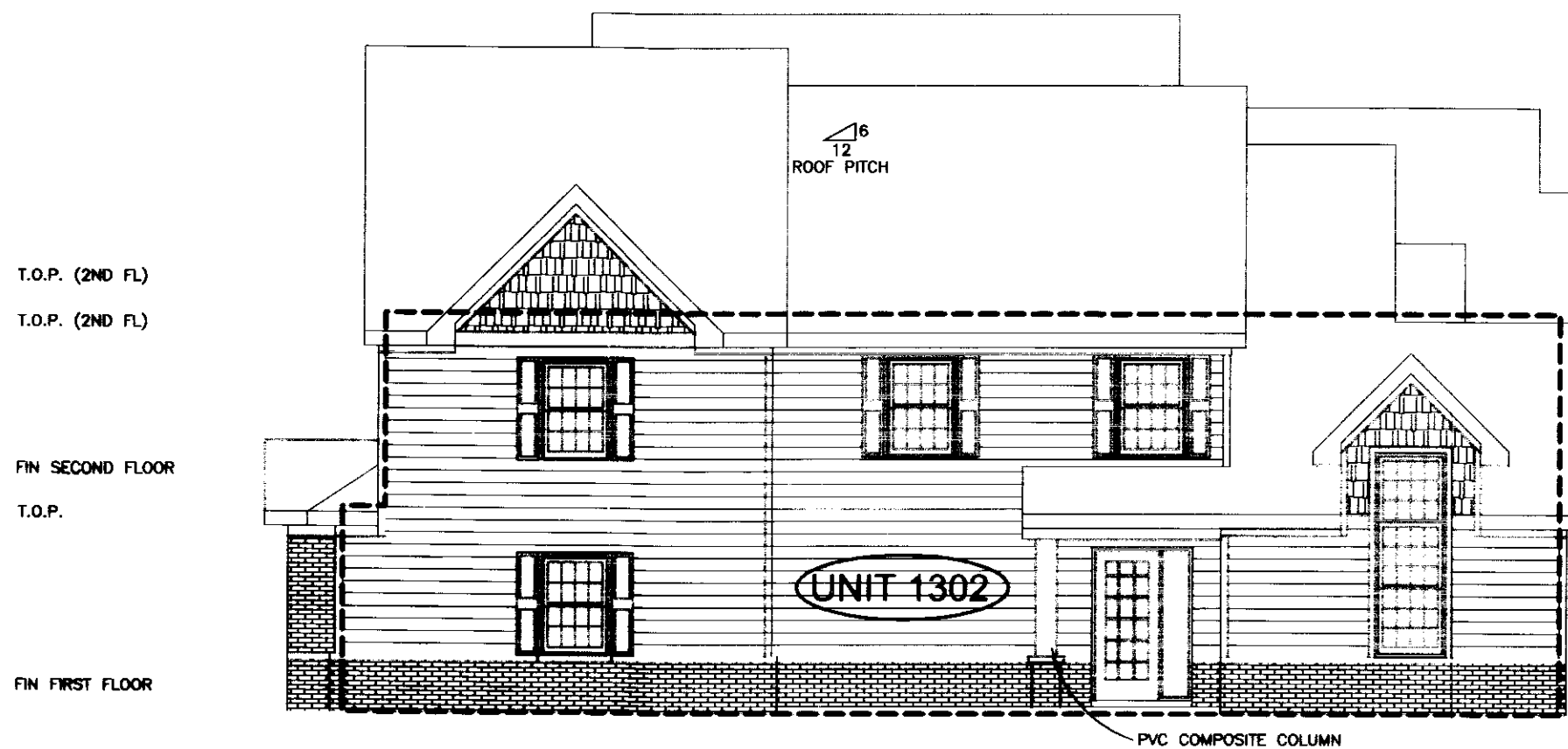
-  COMMON ELEMENT
-  LIMITED COMMON ELEMENT
-  UNIT BOUNDARY



FRONT ELEVATION
1/8" = 1'-0"

NOTES:

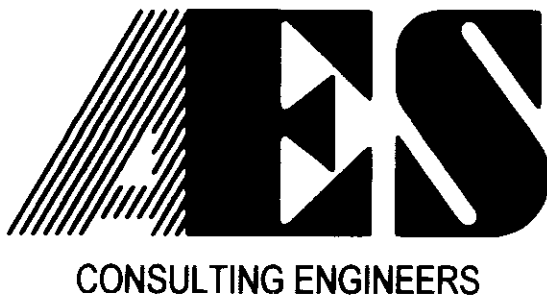
1. COMMON ELEMENTS, LIMITED COMMON ELEMENTS AND UNITS ARE SUBSTANTIALLY COMPLETE.
2. ALL BUILDING DIMENSIONS AND DETAILS SHOWN ARE PER ARCHITECTURAL PLANS PROVIDED TO AES CONSULTING ENGINEERS BY THE DEVELOPER.
3. THE LOWER (HORIZONTAL) BOUNDARY OF EACH UNIT AS SHOWN IN THE PLAN AS LOCATED ON PHASE I IS THE HORIZONTAL PLANE OF THE UPPER SURFACE OF THE CONCRETE FLOOR SLAB OF THOSE UNITS HAVING A FIRST FLOOR COMPONENT, AND IS THE HORIZONTAL PLANE OF THE UPPER SURFACE OF THE UNFINISHED FLOOR (TOP SURFACE OF THE PLYWOOD) FOR THOSE UNITS HAVING COMPONENTS ABOVE THE FIRST FLOOR.
4. FOR TWO-STORY UNITS, THE UPPER (HORIZONTAL) BOUNDARY IS THE PLANE OF THE LOWER SURFACE OF THE DRYWALL THAT IS THE CEILING OF THE SECOND FLOOR, OR ATTIC, OR STORAGE AREA ABOVE THE SECOND FLOOR. NONE OF THE ROOF WILL BE A PART OF THE UNIT. FOR ONE-STORY UNITS, THE UPPER BOUNDARY IS THE PLANE OF THE LOWER SURFACE OF THE DRYWALL THAT IS THE CEILING OF THE UNIT.
5. THE VERTICAL (SIDE) BOUNDARIES OF THE UNIT SHALL BE THE VERTICAL PLANE OF THE UNFINISHED INNER SURFACE OF THE DRYWALL ON THE INSIDE OF THE PERIMETER WALLS OF THE UNIT, EXTENDED TO INTERSECTIONS WITH EACH OTHER AND WITH THE UPPER AND LOWER BOUNDARIES. WHENEVER THERE IS AN OVERHANG CREATED BY A SECOND FLOOR EXTENDING OUT BEYOND THE VERTICAL PLANE OF THE EXTERIOR OF THE FIRST FLOOR, THE VERTICAL (SIDE) BOUNDARY OF THE FIRST FLOOR AND THE VERTICAL BOUNDARY OF THE SECOND FLOOR SHALL BE JOINED BY THE UPPER PLANE (INTERIOR) OF THE SOFFIT.
6. LOWER, UPPER AND SIDE BOUNDARIES ARE MORE FULLY DESCRIBED IN THE DECLARATION OF CONDOMINIUM.
7. THE WALL SECTIONS AS SHOWN HEREON WERE TAKEN FROM ARCHITECTURAL DRAWINGS PROVIDED BY THE DEVELOPER. THE INTENDED PURPOSE IS TO ILLUSTRATE TYPICAL UNIT BOUNDARIES ONLY. ALL OTHER INFORMATION INCLUDING CONSTRUCTION MATERIALS AND METHODS IS SHOWN FOR REFERENCE PURPOSES ONLY AND HAS NOT BEEN FIELD VERIFIED. THE SURVEYOR MAKES NO GUARANTEES AS TO BUILDING METHODS, MATERIALS, OR CONSTRUCTION.



RIGHT SIDE ELEVATION- MODEL B (UNIT 1302)
1/8" = 1'-0"

9 Large/Plat(s) Recorded
herewith as # 080022351

S:\Jobs\9286\02-Norge Condo Plats\dwg\Plats\Record\Phase 13\Final Condo Plat Ph 13-A\928602Condo Phase 13A Sh 08.dwg, 8/28/2008 3:37:31 PM, Tony Taylor



5248 Olde Towne Road, Suite 1
Williamsburg, Virginia 23188
(757) 253-0040
Fax (757) 220-8994

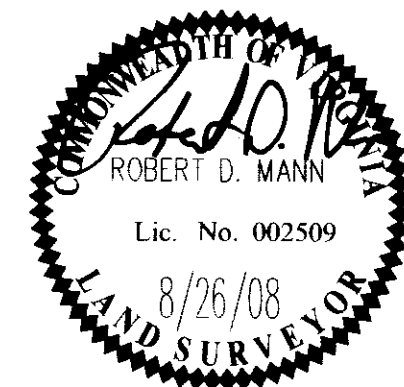
WILLIAMSBURG • RICHMOND • GLOUCESTER • FREDERICKSBURG

"EXHIBIT 1"

PLAN OF CONDOMINIUM

WILLIAMSBURG VILLAGE AT NORGE CONDOMINIUM
PHASE 13-A
UNITS #1301, 1302, 1303, AND 1304

STONEHOUSE DISTRICT COUNTY OF JAMES CITY VIRGINIA



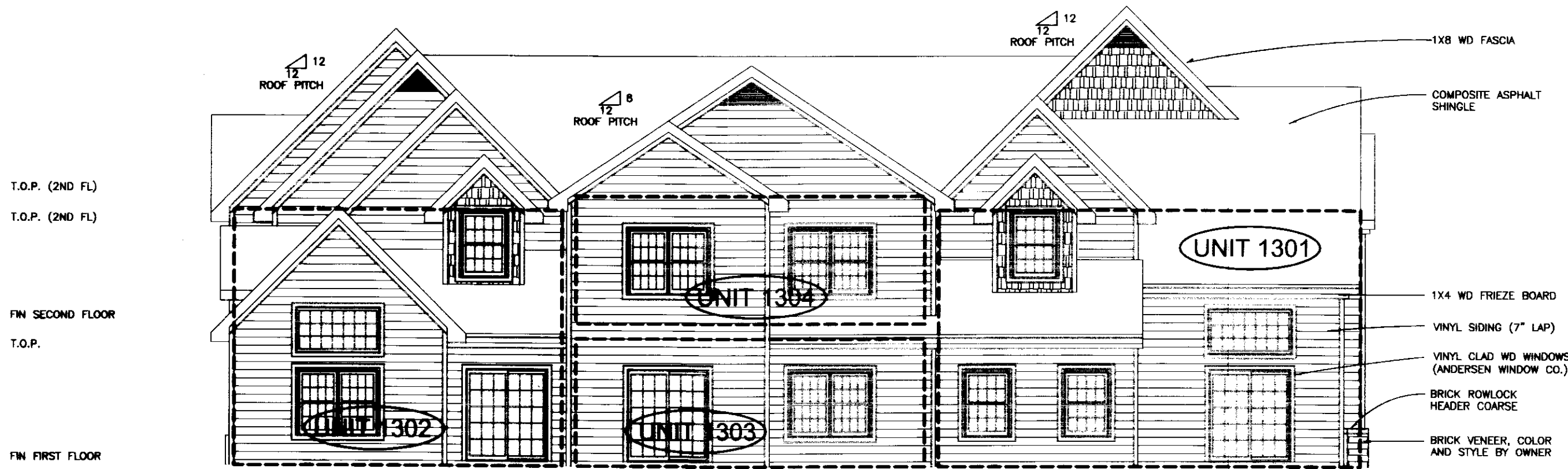
No.	DATE	REVISION / COMMENT / NOTE	BY

City of Williamsburg & County of James City
Circuit Court: This PLAT was recorded on
at 10:45 AM on 8/26/08
DOCUMENT # 080022351
BETSY B. WOOLRIDGE, CLERK
Betsy B. Woolridge Clerk

Designed VMB/JAG	Drawn AWT
Scale 1/8"=1'	Date 8/26/08
Project No. 9286-2	
Drawing No. 8 of 9	

080022351

- CE COMMON ELEMENT
- LCE LIMITED COMMON ELEMENT
- UNIT BOUNDARY



REAR ELEVATION
1/8" = 1'-0"



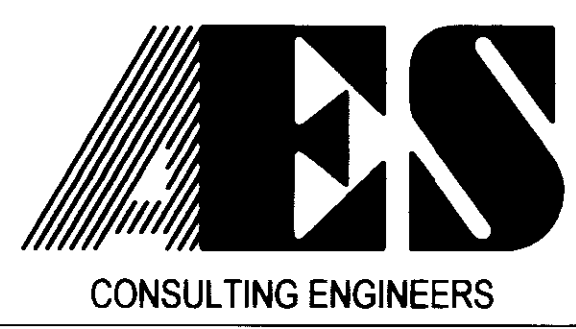
LEFT SIDE ELEVATION- MODEL A (UNIT 1301)
1/8" = 1'-0"

NOTES:

1. COMMON ELEMENTS, LIMITED COMMON ELEMENTS AND UNITS ARE SUBSTANTIALLY COMPLETE.
2. ALL BUILDING DIMENSIONS AND DETAILS SHOWN ARE PER ARCHITECTURAL PLANS PROVIDED TO AES CONSULTING ENGINEERS BY THE DEVELOPER.
3. THE LOWER (HORIZONTAL) BOUNDARY OF EACH UNIT AS SHOWN IN THE PLAN AS LOCATED ON PHASE I IS THE HORIZONTAL PLANE OF THE UPPER SURFACE OF THE CONCRETE FLOOR SLAB OF THOSE UNITS HAVING A FIRST FLOOR COMPONENT, AND IS THE HORIZONTAL PLANE OF THE UPPER SURFACE OF THE UNFINISHED FLOOR (TOP SURFACE OF THE PLYWOOD) FOR THOSE UNITS HAVING COMPONENTS ABOVE THE FIRST FLOOR.
4. FOR TWO-STORY UNITS, THE UPPER (HORIZONTAL) BOUNDARY IS THE PLANE OF THE LOWER SURFACE OF THE DRYWALL THAT IS THE CEILING OF THE SECOND FLOOR, OR ATTIC, OR STORAGE AREA ABOVE THE SECOND FLOOR. NONE OF THE ROOF WILL BE A PART OF THE UNIT. FOR ONE-STORY UNITS, THE UPPER BOUNDARY IS THE PLANE OF THE LOWER SURFACE OF THE DRYWALL THAT IS THE CEILING OF THE UNIT.
5. THE VERTICAL (SIDE) BOUNDARIES OF THE UNIT SHALL BE THE VERTICAL PLANE OF THE UNFINISHED INNER SURFACE OF THE DRYWALL ON THE INSIDE OF THE PERIMETER WALLS OF THE UNIT, EXTENDED TO INTERSECTIONS WITH EACH OTHER AND WITH THE UPPER AND LOWER BOUNDARIES. WHENEVER THERE IS AN OVERHANG CREATED BY A SECOND FLOOR EXTENDING OUT BEYOND THE VERTICAL PLANE OF THE EXTERIOR OF THE FIRST FLOOR, THE VERTICAL (SIDE) BOUNDARY OF THE FIRST FLOOR AND THE VERTICAL BOUNDARY OF THE SECOND FLOOR SHALL BE JOINED BY THE UPPER PLANE (INTERIOR) OF THE SOFFIT.
6. LOWER, UPPER AND SIDE BOUNDARIES ARE MORE FULLY DESCRIBED IN THE DECLARATION OF CONDOMINIUM.
7. THE WALL SECTIONS AS SHOWN HEREON WERE TAKEN FROM ARCHITECTURAL DRAWINGS PROVIDED BY THE DEVELOPER. THE INTENDED PURPOSE IS TO ILLUSTRATE TYPICAL UNIT BOUNDARIES ONLY. ALL OTHER INFORMATION INCLUDING CONSTRUCTION MATERIALS AND METHODS IS SHOWN FOR REFERENCE PURPOSES ONLY AND HAS NOT BEEN FIELD VERIFIED. THE SURVEYOR MAKES NO GUARANTEES AS TO BUILDING METHODS, MATERIALS, OR CONSTRUCTION.

9 Larger Plat(s) Recorded
with # 080022351

S:\Jobs\9286\02-Norge Condo Plats\dwg\Plats\Record\Phase 13\Final Condo Plat Ph 13-A\928602Condo Phase 13A SH 09.dwg, 8/28/2008 3:36:56 PM, Tony Taylor



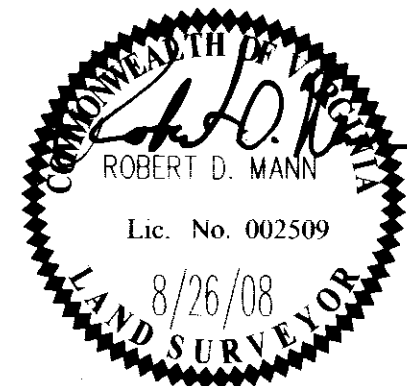
5248 Olde Towne Road, Suite 1
Williamsburg, Virginia 23188
(757) 253-0040
Fax (757) 220-8994

"EXHIBIT 1"

PLAN OF CONDOMINIUM

WILLIAMSBURG VILLAGE AT NORGE CONDOMINIUM
PHASE 13-A
UNITS #1301, 1302, 1303, AND 1304

STONEHOUSE DISTRICT COUNTY OF JAMES CITY VIRGINIA



No.	DATE	REVISION / COMMENT / NOTE	BY

City of Williamsburg & County of James City
Circuit Court: This PLAT was recorded on
at 10:45 AM on 8/26/08
DOCUMENT # 080022351
BETSY B. WOOLRIDGE, CLERK
Betsy B. Woolridge Clerk

Designed VMB/JAG	Drawn AWT
Scale 1/8"=1'	Date 8/26/08
Project No. 9286-2	
Drawing No. 9 of 9	