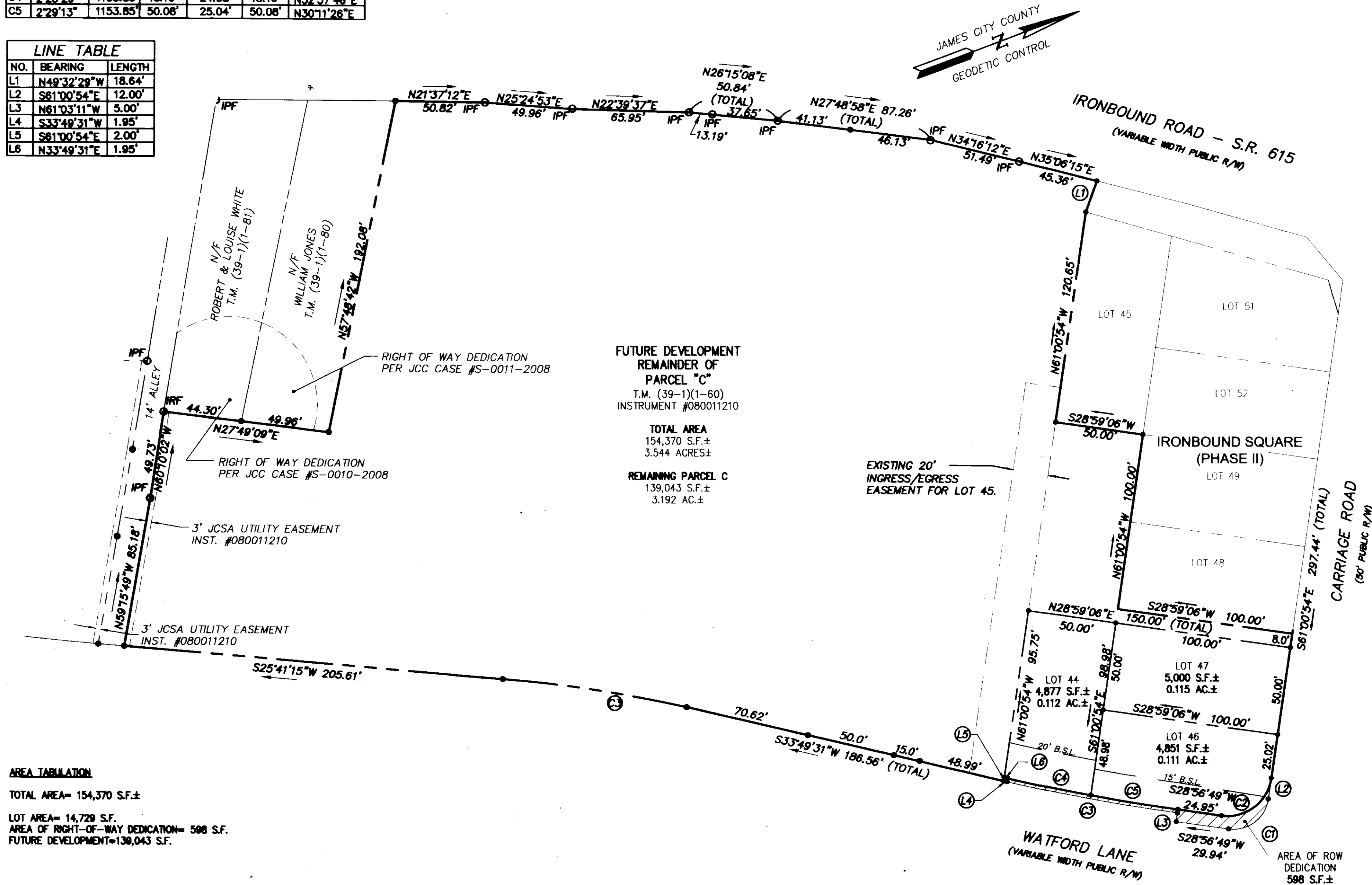


NOTE: PARCEL "C" WAS CREATED BY BOUNDARY LINE ADJUSTMENT/EXTINGUISHMENT PER JAMES CITY COUNTY CASE #S-0003-2008.

CURVE TABLE						
NO.	DELTA	RADIUS	LENGTH	TANGENT	CHORD	CH. BEARING
C1	89°57'43"	20.00'	31.40'	19.99'	28.27'	S18°02'02"E
C2	89°57'43"	25.00'	39.25'	24.98'	35.34'	S18°02'02"E
C3	4°52'42"	1153.85'	98.24'	49.14'	98.21'	S30°11'28"W
C4	2°23'29"	1153.85'	48.16'	24.08'	48.16'	N32°37'46"E
C5	2°29'13"	1153.85'	50.08'	25.04'	50.08'	N30°11'28"E

LINE TABLE		
NO.	BEARING	LENGTH
L1	N49°32'29"W	18.64'
L2	S61°00'54"E	12.00'
L3	N61°03'11"W	5.00'
L4	S33°49'31"W	1.95'
L5	S61°00'54"E	2.00'
L6	N33°49'31"E	1.95'

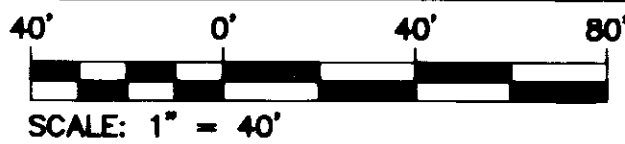
080021899



AREA TABULATION

TOTAL AREA= 154,370 S.F.±
 LOT AREA= 14,729 S.F.
 AREA OF RIGHT-OF-WAY DEDICATION= 598 S.F.
 FUTURE DEVELOPMENT=139,043 S.F.

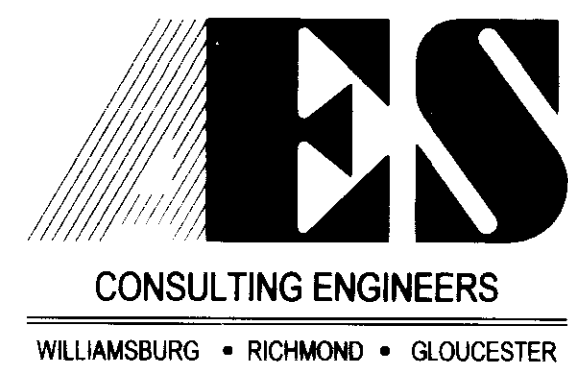
GRAPHIC SCALE



LEGEND

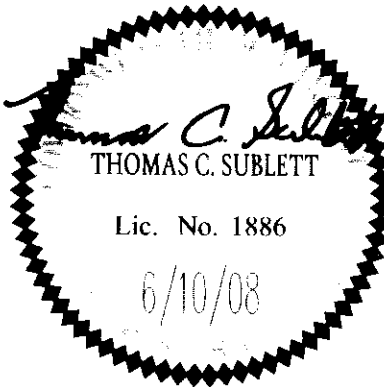
- D.B. = DEED BOOK
- P.B. = PLAT BOOK
- B.S.L. = BUILDING SETBACK LINE
- = INTERIOR PARCEL LINES
- = WMSBURG HOUSING
- = INTERIOR PARCEL LINES PRIVATE OWNER
- = BOUNDARY LINE
- ▨ = AREA OF R-O-W DEDICATION
- IPF = IRON PIPE FOUND
- IRF = IRON ROD FOUND
- CMF = CONC. MON. FOUND

2 Large/Small Plat(s) Recorded herewith as # 080021899



5248 Olde Towne Road, Suite 1
 Williamsburg, Virginia 23188
 (757) 253-0040
 Fax (757) 220-8994

PLAT OF CORRECTION
 PLAT OF SUBDIVISION PARCEL "C"
 WILLIAMSBURG REDEVELOPMENT AND HOUSING AUTHORITY
IRONBOUND SQUARE
 PHASE II
 LOT 44, LOTS 46-47
 BERKELEY DISTRICT JAMES CITY COUNTY VIRGINIA



City of Williamsburg & County of James City Circuit Court: This PLAT was recorded on <u>2 September 2008</u> at <u>3:49</u> AM/PM, PG <u>1</u> DOCUMENT # <u>080021899</u> BETSY B. WOOLRIDGE, CLERK		Clerk <u>Betsy B. Woolridge</u>	
1	07/14/08	REVISED PER JCC COMMENTS	ABS TCS
No.	DATE	REVISION / COMMENT / NOTE	REMOVED BY REVIEWED BY

Designed AES	Drawn JDB
Scale 1"=40'	Date 02/22/08
Project No. 9014	
Drawing No. 2 OF 2	