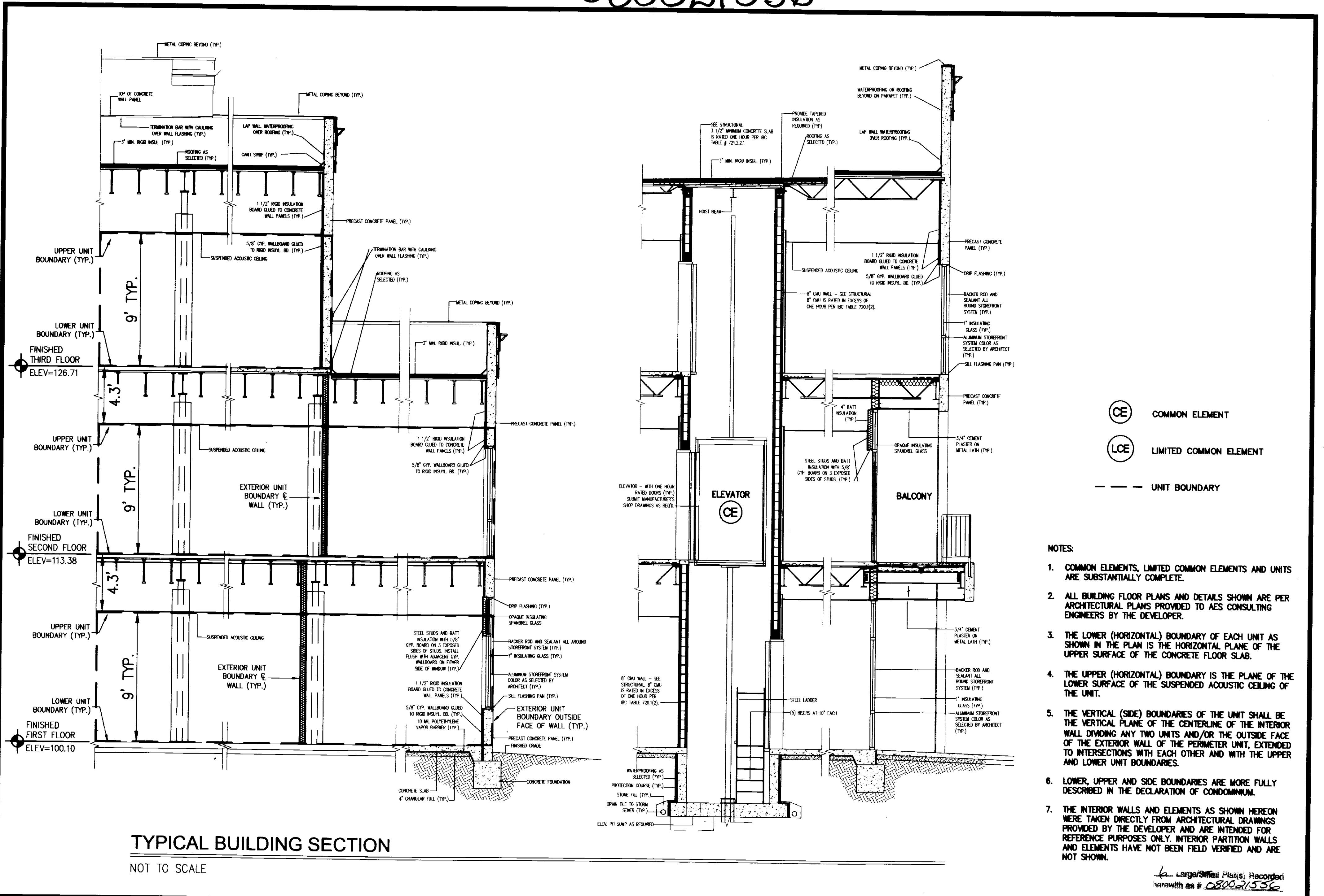


080021556



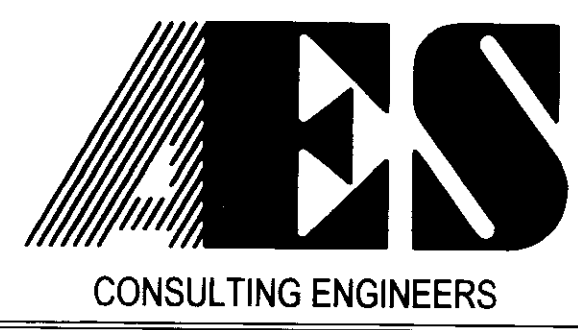
(CE) COMMON ELEMENT
 (LCE) LIMITED COMMON ELEMENT
 - - - UNIT BOUNDARY

- NOTES:
- COMMON ELEMENTS, LIMITED COMMON ELEMENTS AND UNITS ARE SUBSTANTIALLY COMPLETE.
 - ALL BUILDING FLOOR PLANS AND DETAILS SHOWN ARE PER ARCHITECTURAL PLANS PROVIDED TO AES CONSULTING ENGINEERS BY THE DEVELOPER.
 - THE LOWER (HORIZONTAL) BOUNDARY OF EACH UNIT AS SHOWN IN THE PLAN IS THE HORIZONTAL PLANE OF THE UPPER SURFACE OF THE CONCRETE FLOOR SLAB.
 - THE UPPER (HORIZONTAL) BOUNDARY IS THE PLANE OF THE LOWER SURFACE OF THE SUSPENDED ACOUSTIC CEILING OF THE UNIT.
 - THE VERTICAL (SIDE) BOUNDARIES OF THE UNIT SHALL BE THE VERTICAL PLANE OF THE CENTERLINE OF THE INTERIOR WALL DIVIDING ANY TWO UNITS AND/OR THE OUTSIDE FACE OF THE EXTERIOR WALL OF THE PERIMETER UNIT, EXTENDED TO INTERSECTIONS WITH EACH OTHER AND WITH THE UPPER AND LOWER UNIT BOUNDARIES.
 - LOWER, UPPER AND SIDE BOUNDARIES ARE MORE FULLY DESCRIBED IN THE DECLARATION OF CONDOMINIUM.
 - THE INTERIOR WALLS AND ELEMENTS AS SHOWN HEREON WERE TAKEN DIRECTLY FROM ARCHITECTURAL DRAWINGS PROVIDED BY THE DEVELOPER AND ARE INTENDED FOR REFERENCE PURPOSES ONLY. INTERIOR PARTITION WALLS AND ELEMENTS HAVE NOT BEEN FIELD VERIFIED AND ARE NOT SHOWN.

TYPICAL BUILDING SECTION
NOT TO SCALE

S:\Jobs\6632156\15D-VenturEast\dwg\Sur\Plans\Phase 08 Unit 200 + 1st Floor\663215D Condo FIRST FLOOR 06 SECTIONS.dwg, 8/25/2008 4:03:30 PM, Tony Taylor

Large/Small Prints Recorded herewith # 080021556

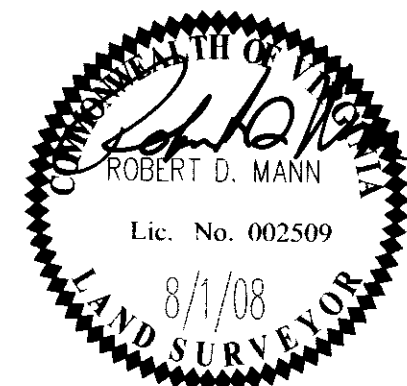


5248 Olde Towne Road, Suite 1
Williamsburg, Virginia 23188
(757) 253-0040
Fax (757) 220-8994

"EXHIBIT 1"

PLAN OF CONDOMINIUM
PATRIOT PARK, A CONDOMINIUM
PHASE 8, UNITS 110A, 110B, 120A, 120B, 130A, 130B & 200
OWNER/DEVELOPER: PATRIOT DEVELOPMENT ASSOCIATES, LLC

BERKELEY DISTRICT JAMES CITY COUNTY VIRGINIA



No.	DATE	REVISION / COMMENT / NOTE	BY
2	8/25/08	REVISED UNIT BOUNDARY	AWT
1	8/11/08	CORRECTED UNIT DIMENSIONS	AWT
		REVISION / COMMENT / NOTE	

City of Williamsburg & County of James City
Circuit Court. This PLAT was recorded on
27 August 2008
at 2:25 AM/PM, PB PG
DOCUMENT # 080021556
BETSY B. WOOLRIDGE, CLERK
Betsy B. Woolridge Clerk

Designed AES	Drawn AWT
Scale NTS	Date 8/1/08
Project No. 6632-6-15D	
Drawing No. 6 of 6	