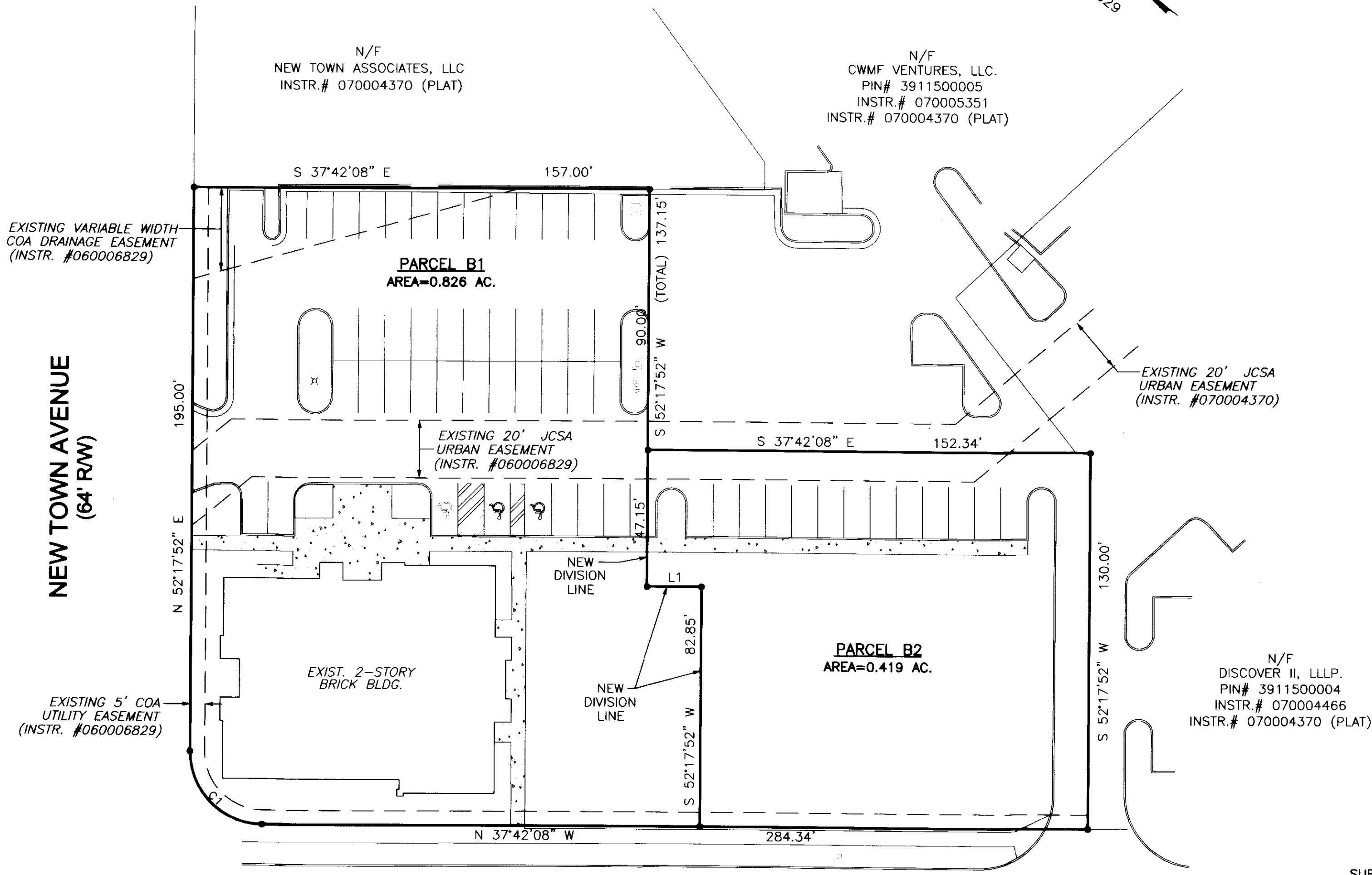


080017016

**PROPERTY INFORMATION**  
 TAKE FIVE, LLC.  
 PIN# 3911500002  
 INSTR.# 060007236  
 INSTR.# 060006829 (PLAT)

RECORD MERIDIAN  
 INSTR.# 060006829



NEW TOWN AVENUE  
 (64' R/W)

DISCOVERY PARK BOULEVARD  
 (74' R/W)

City of Williamsburg & County of James City  
 Circuit Court: This PLAT was recorded on  
 at 9:57 AM/PM PG. -  
 DOCUMENT # 080017016  
 BETSY B. WOOLRIDGE, CLERK  
 Clerk

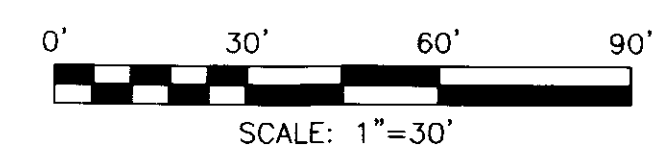
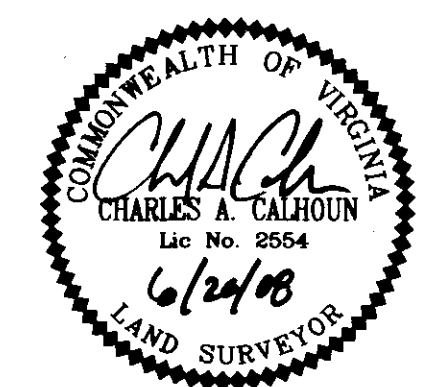
2 Large/Small Plat(s) Recorded  
 herewith as # 080017016

LINE TABLE

LINE	ANGLE	DISTANCE
L1	S 37°42'08" E	18.78'

CURVE TABLE

NO.	DELTA	CHORD	BEARING	TANGENT	RADIUS	ARC	CHORD
C1	90°00'00"	N 07°17'52" E	25.00	25.00	39.27	35.36	



SUBDIVISION PLAT OF  
 NEW TOWN  
 BLOCK 14 - PARCEL B  
 STANDING IN THE NAME OF  
 TAKE FIVE, LLC.

BERKELEY DISTRICT, JAMES CITY COUNTY, VIRGINIA  
 DATE: 05/27/2008 SCALE: 1"=30' JOB #07-419  
 REV: 06/20/2008

SHEET 2 OF 2

**LandTech**  
 Resources, Inc.  
 Surveying - Engineering - GPS

201-A Bulifants Blvd., Williamsburg, VA 23188  
 Phone: (757) 565-1677 Fax: (757) 565-0782  
 web: landtechresources.com

**NOTE:**  
 COA - COMMERCIAL OWNERS ASSOCIATION EASEMENT  
 (NEW TOWN COMMERCIAL ASSOCIATION)