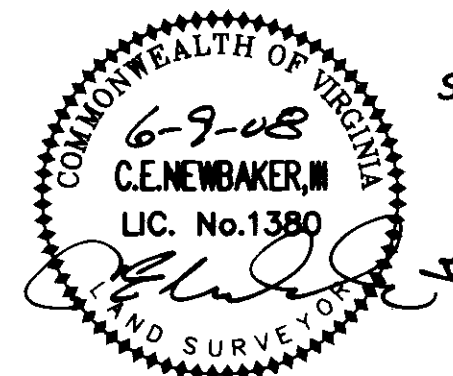


080016354

CONSERVATION EASEMENT  
DEDICATED TO JAMES CITY COUNTY  
AREA = 399,310 S.F. OR 9.167 AC.

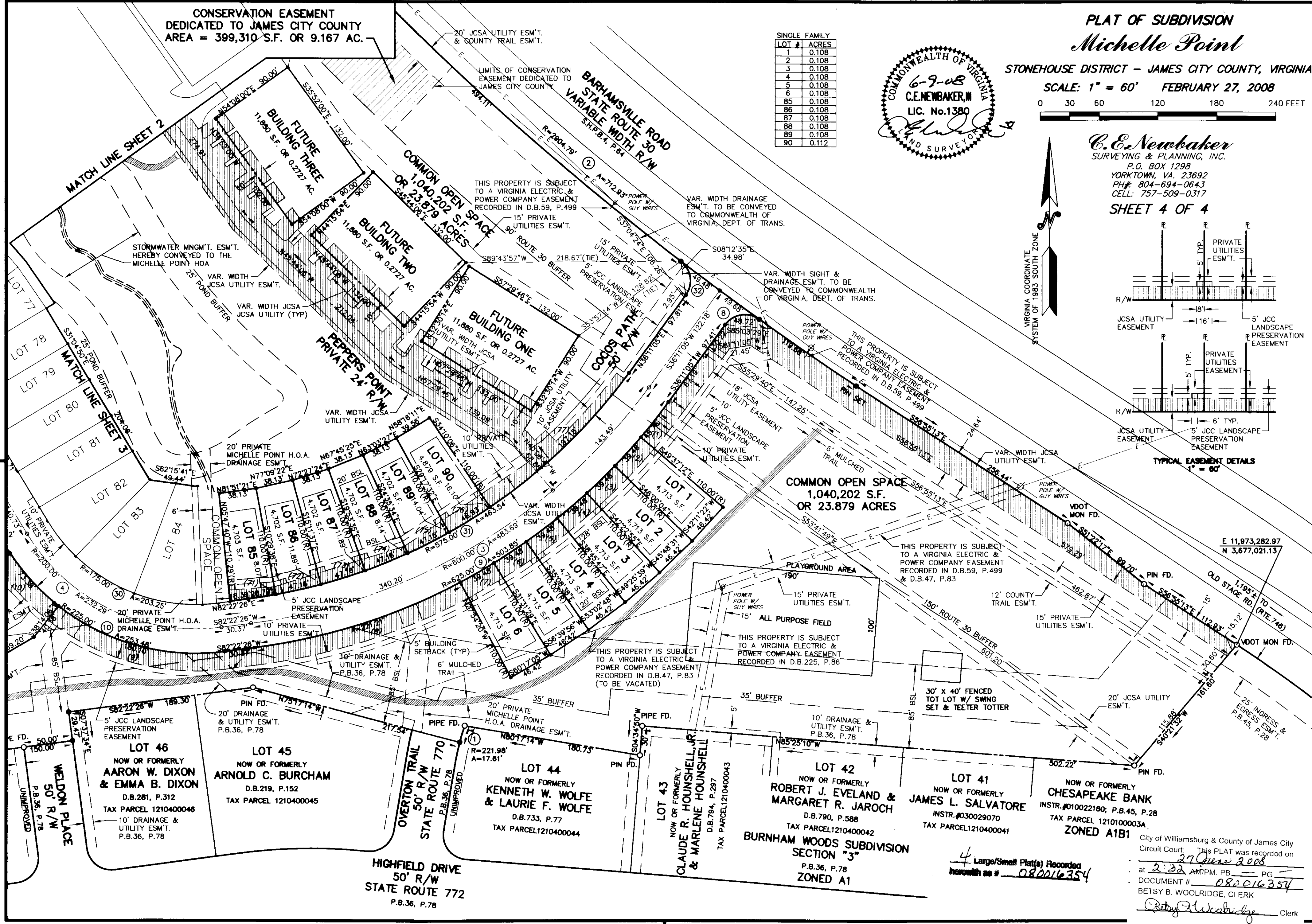
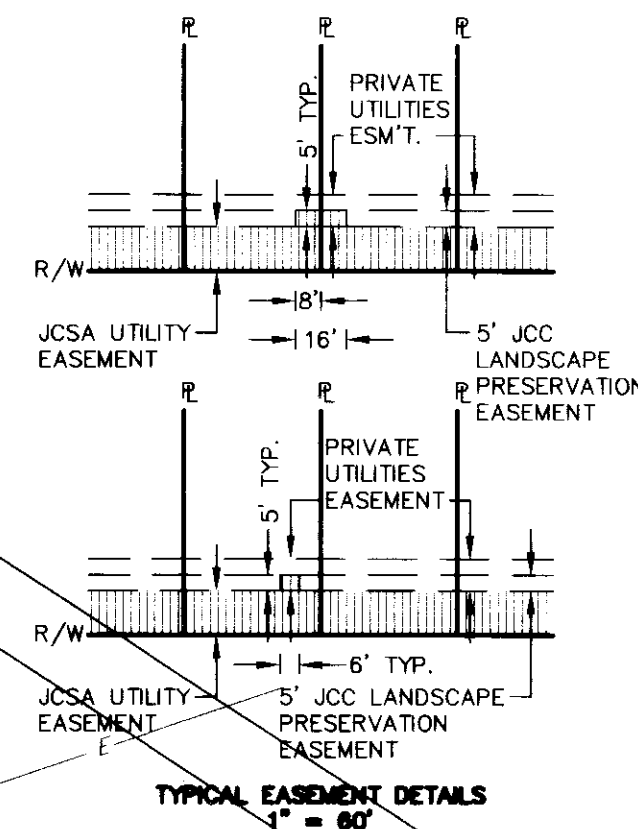
LOT #	ACRES
1	0.108
2	0.108
3	0.108
4	0.108
5	0.108
6	0.108
85	0.108
86	0.108
87	0.108
88	0.108
89	0.108
90	0.112



**PLAT OF SUBDIVISION**  
*Michelle Point*  
STONEHOUSE DISTRICT - JAMES CITY COUNTY, VIRGINIA  
SCALE: 1" = 60' FEBRUARY 27, 2008  
0 30 60 120 180 240 FEET

**C.E. Newbaker**  
SURVEYING & PLANNING, INC.  
P.O. BOX 1298  
YORKTOWN, VA. 23692  
PH#: 804-694-0643  
CELL: 757-509-0317

SHEET 4 OF 4



City of Williamsburg & County of James City  
Circuit Court. This PLAT was recorded on  
27 June 2008  
at 2:32 AM/PM, PG. 1  
DOCUMENT # 080016354  
BETSY B. WOOLRIDGE, CLERK  
*Betsy B. Woolridge* Clerk