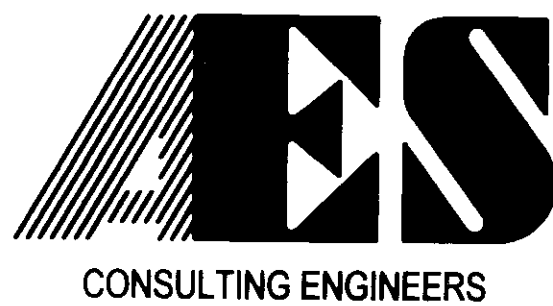
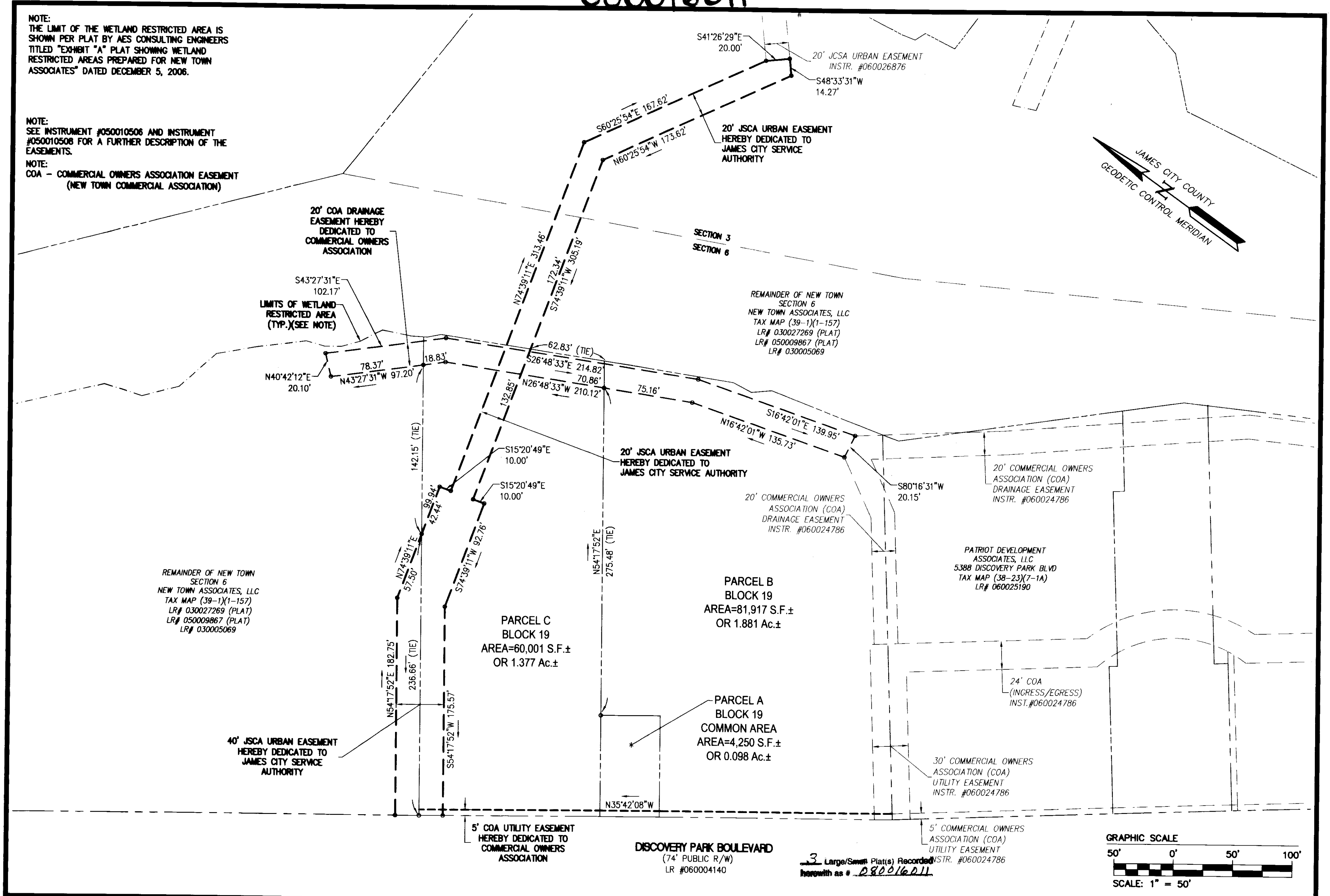


080016011

NOTE:
THE LIMIT OF THE WETLAND RESTRICTED AREA IS SHOWN PER PLAT BY AES CONSULTING ENGINEERS TITLED "EXHIBIT "A" PLAT SHOWING WETLAND RESTRICTED AREAS PREPARED FOR NEW TOWN ASSOCIATES" DATED DECEMBER 5, 2006.

NOTE:
SEE INSTRUMENT #050010506 AND INSTRUMENT #050010506 FOR A FURTHER DESCRIPTION OF THE EASEMENTS.

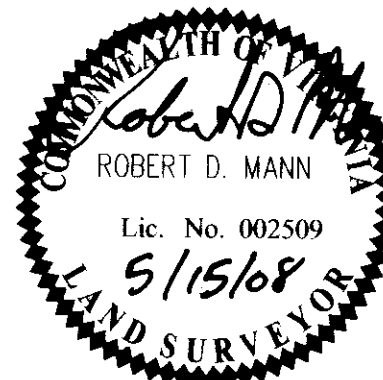
NOTE:
COA - COMMERCIAL OWNERS ASSOCIATION EASEMENT (NEW TOWN COMMERCIAL ASSOCIATION)



5248 Olde Towne Road, Suite 1
Williamsburg, Virginia 23188
(757) 253-0040
Fax (757) 220-8994

WILLIAMSBURG • RICHMOND • GLOUCESTER • FREDERICKSBURG

PLAT OF SUBDIVISION
PARCELS A, B AND C
SECTION 6
NEW TOWN
OWNED BY NEW TOWN ASSOCIATES, LLC.
BERKELEY DISTRICT JAMES CITY COUNTY VIRGINIA



No.	DATE	REVISION / COMMENT / NOTE	BY

City of Williamsburg & County of James City
Circuit Court. This PLAT was recorded on
23rd June 2008
at 1:20 AM/PM, PG
DOCUMENT # 080016011
BETSY B. WOOLRIDGE, CLERK
Betsy B. Woolridge Clerk

Designed AES	Drawn BBS
Scale 1"=50'	Date 4/7/08
Project No. 6632-6-19	
Drawing No. 3 of 3	