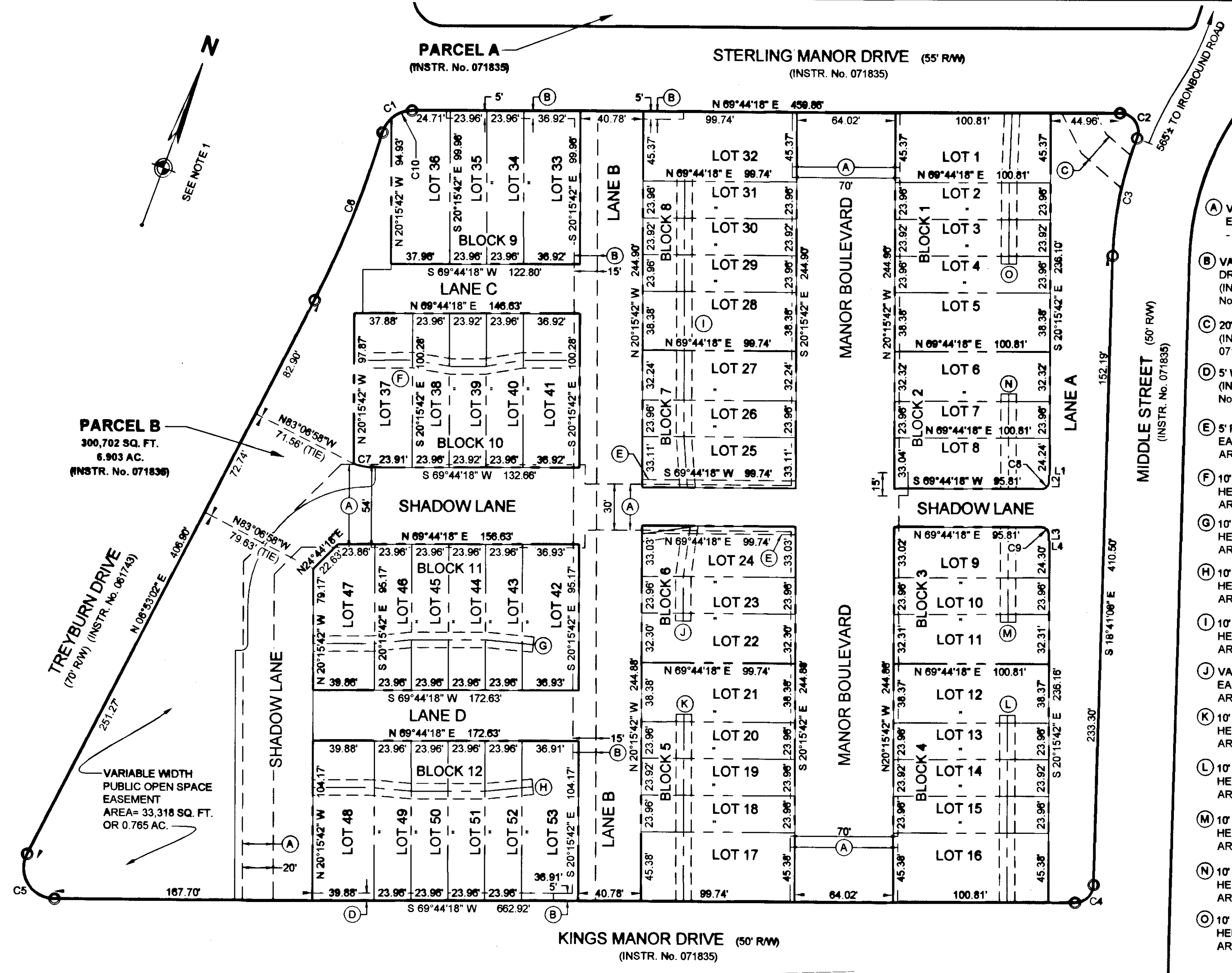
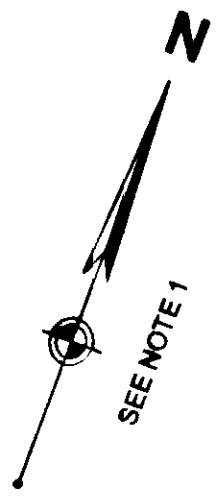


080016

NOTE:
SEE SHEET 2 OF 3 FOR MANOR BOULEVARD, SHADOW LANE, LANE A, LANE B, LANE C, AND LANE D DATA.



PARCEL F
(INSTR. No. 071835)

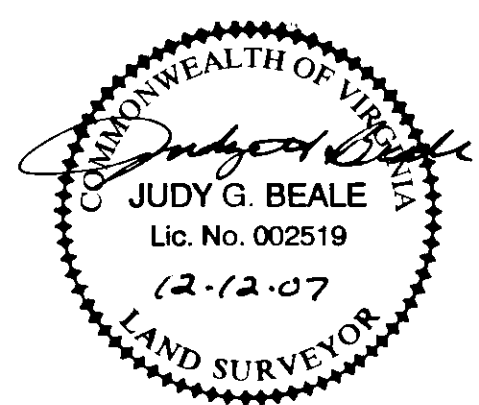
PARCEL G-1
(INSTR. No. 071835)

- (A) VARIABLE WIDTH PUBLIC UTILITY EASEMENT (INSTR. No. 071835 - PLAT & INSTR. No. 071837 - DEED)
- (B) VARIABLE WIDTH PRIVATE DRAINAGE EASEMENT. (INSTR. No. 071835 - PLAT & INSTR. No. 071837 - DEED)
- (C) 20' PRIVATE DRAINAGE EASEMENT. (INSTR. No. 071835 - PLAT & INSTR. No. 071837 - DEED)
- (D) 5' WATER LINE EASEMENT (INSTR. No. 071835 - PLAT & INSTR. No. 071837 - DEED)
- (E) 5' PRIVATE PEDESTRIAN ACCESS EASEMENT HEREBY ESTABLISHED. AREA= 499 SQ. FT. OR 0.011 AC.
- (F) 10' PRIVATE DRAINAGE EASEMENT HEREBY ESTABLISHED. AREA= 1,390 SQ. FT. OR 0.032 AC.
- (G) 10' PRIVATE DRAINAGE EASEMENT HEREBY ESTABLISHED. AREA= 1,430 SQ. FT. OR 0.033 AC.
- (H) 10' PRIVATE DRAINAGE EASEMENT HEREBY ESTABLISHED. AREA= 1,430 SQ. FT. OR 0.033 AC.
- (I) 10' PRIVATE DRAINAGE EASEMENT HEREBY ESTABLISHED. AREA= 2,045 SQ. FT. OR 0.047 AC.
- (J) VAR. WIDTH PRIVATE DRAINAGE EASEMENT HEREBY ESTABLISHED. AREA= 841 SQ. FT. OR 0.019 AC.
- (K) 10' PRIVATE DRAINAGE EASEMENT HEREBY ESTABLISHED. AREA= 1,221 SQ. FT. OR 0.028 AC.
- (L) 10' PRIVATE DRAINAGE EASEMENT HEREBY ESTABLISHED. AREA= 1,221 SQ. FT. OR 0.028 AC.
- (M) 10' PRIVATE DRAINAGE EASEMENT HEREBY ESTABLISHED. AREA= 620 SQ. FT. OR 0.014 AC.
- (N) 10' PRIVATE DRAINAGE EASEMENT HEREBY ESTABLISHED. AREA= 620 SQ. FT. OR 0.014 AC.
- (O) 10' PRIVATE DRAINAGE EASEMENT HEREBY ESTABLISHED. AREA= 985 SQ. FT. OR 0.023 AC.

PARCEL B
300,702 SQ. FT.
6.903 AC.
(INSTR. No. 071836)

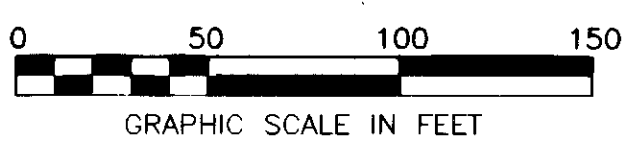
TREYBURN DRIVE
(70' R/W) (INSTR. No. 061743)

VARIABLE WIDTH PUBLIC OPEN SPACE EASEMENT
AREA= 33,318 SQ. FT.
OR 0.765 AC.



CURVE TABLE					
CURVE	RADIUS	LENGTH	DELTA	CHORD	CH BEARING
C1	20.00'	25.65'	73°29'23"	23.93'	N 32°59'36" E
C2	12.00'	23.38'	111°31'30"	19.84'	S 54°29'57" E
C3	225.00'	78.42'	19°58'09"	78.02'	S 08°43'17" E
C4	12.00'	18.52'	88°25'26"	16.74'	S 25°31'35" W
C5	20.00'	40.89'	117°08'44"	34.13'	N 51°41'20" W
C6	635.00'	117.87'	10°38'07"	117.70'	N 01°33'59" E
C7	38.53'	14.24'	21°11'00"	14.16'	N 79°30'32" E
C8	4.50'	7.07'	90°00'00"	6.36'	N 24°44'18" E
C9	4.50'	7.07'	90°00'00"	6.36'	N 65°15'42" W
C10	20.00'	14.49'	41°31'19"	14.18'	N 48°58'38" E

LINE TABLE		
LINE	BEARING	LENGTH
L1	S 69°44'18" W	0.50'
L2	S 20°15'42" E	4.30'
L3	S 20°15'42" E	4.22'
L4	N 69°44'18" E	0.50'



City of Williamsburg & County of James City
Circuit Court: This PLAT was recorded on
3 January 2008
at 2:58 AM/PM, PB 0 PG 1
DOCUMENT # 080016
BETSY B. WOOLRIDGE, CLERK
Betsy B. Woolridge Clerk

LEGEND

- IP(S) IRON PIN TO BE SET
- IP(F) IRON PIN FOUND
- NAIL(S) NAIL TO BE SET
- NAIL(F) NAIL FOUND
- PIPE(F) IRON PIPE FOUND

REV. 06-03-07 PER CITY COMMENTS
REV. 07-29-07 PER CITY COMMENTS
REV. 06-04-07 PER CLIENT COMMENTS
REV. 12-20-05 PER CLIENT COMMENTS

SEE SHEET 2 OF 3 FOR PRIVATE RIGHTS OF WAY & EASEMENTS
SEE SHEET 1 OF 3 FOR NOTES & CERTIFICATIONS

SUBDIVISION OF 3 Large/Small Plat(s) Recorded herewith as # 080016
PARCEL B
PROPERTY OF
TOWNHOMES AT TREYBURN PHASE I, LLC
(INSTR. No. 061836, INSTR. No. 071835)
WILLIAMSBURG, VIRGINIA

WOOLPERT, INC.
415 PORT CENTRE PARKWAY
SUITE 101
PORTSMOUTH, VA 23704-4924
TEL: 757.399.6882 FAX: 757.399.6869

DES. N/A JOB NO. 62896.01
DRN. RDA SCALE 1"=50'
CKD. JGB DATE 7-06-05
SHEET NO. 3 OF 3
FILE NO. Twnhse_plat.dwg

VIRGINIA:
IN THE CLERK'S OFFICE OF THE CIRCUIT COURT OF THE CITY OF WILLIAMSBURG,
VIRGINIA ON THIS 3 DAY OF Jan, 2008 THIS PLAT WAS RECEIVED AND
ADMITTED TO RECORD IN MAP BOOK AT PAGE AT
TESTE: *Betsy B. Woolridge* CLERK
Betsy B. Woolridge