

080014158

CURVE TABLE						
CURVE	DELTA	RADIUS	LENGTH	TANGENT	CHORD	CHORD BEARING
C12	78°28'40"	167.00'	228.74'	136.39'	211.27'	N52°03'54"W
C13	94°30'32"	15.00'	24.74'	16.23'	22.03'	N60°04'50"W
C14	90°00'00"	10.00'	15.71'	10.00'	14.14'	S21°46'35"W
C15	90°00'00"	10.00'	15.71'	10.00'	14.14'	N68°13'25"W
C16	10°23'51"	172.00'	31.21'	15.65'	31.17'	N71°58'30"E
C25	05°53'19"	128.00'	13.16'	6.58'	13.15'	S13°42'55"W

N/F
SHORT, DAVID L
T.M. (24-3) (1-51)
22.368 ACRES
ZONED A1

EXISTING 20'
UTILITY EASEMENT
CENTERLINE OF STREAM
IS PROPERTY LINE

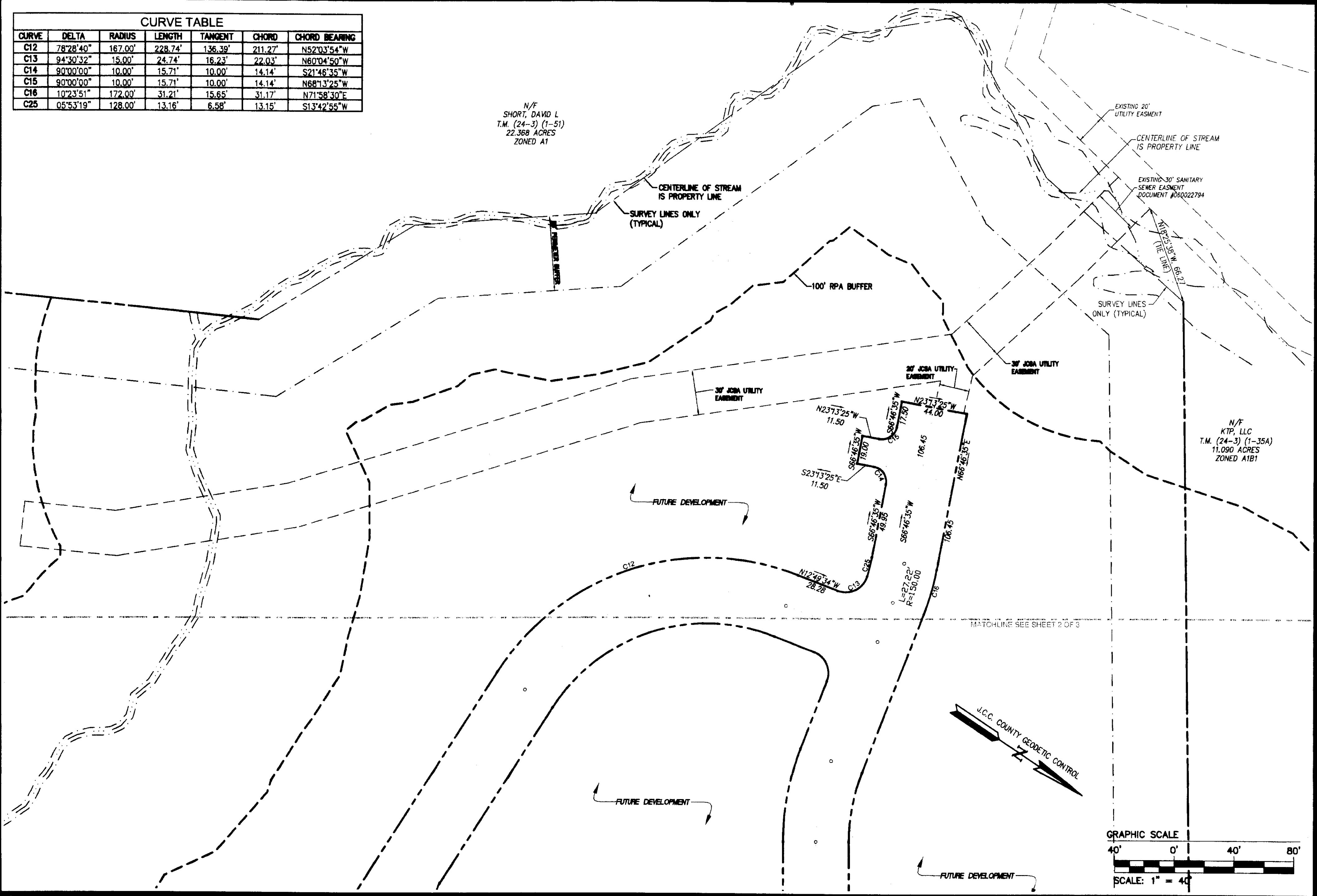
EXISTING 30' SANITARY
SEWER EASEMENT
DOCUMENT #06022794

N12°35'35"W 66.27'
(SEE LINE)

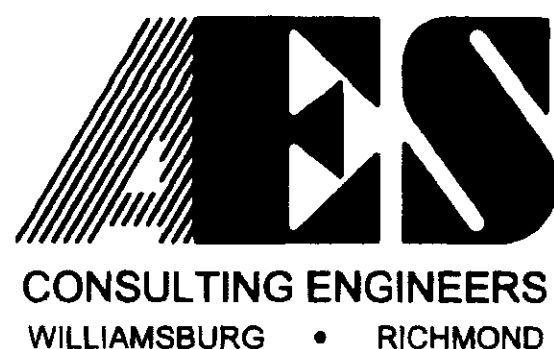
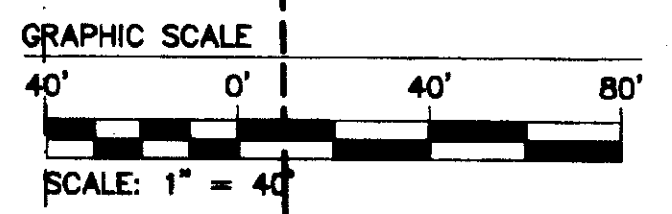
SURVEY LINES
ONLY (TYPICAL)

N/F
KTP, LLC
T.M. (24-3) (1-35A)
11.090 ACRES
ZONED A1B1

S:\Jobs\9353\05-Residential\Phase\dwg\Plots\PHASE_2A.dwg 2/13/2008 2:01:23 PM EST

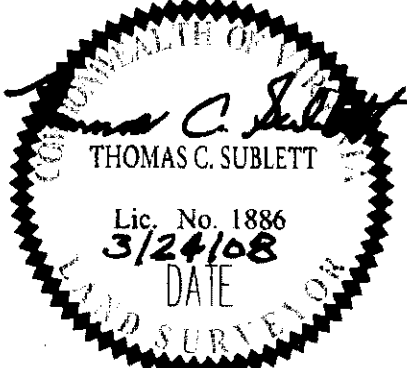


MATCHLINE SEE SHEET 2 OF 3



3 Large/Small Plat(s) Recorded
herewith as # 080014158
5248 Olde Towne Road, Suite 1
Williamsburg, Virginia 23188
(757) 253-0040
Fax (757) 220-8994

PLAT OF SUBDIVISION
**PHASE 2A
LIBERTY CROSSING**
LOTS
1 THRU 5, 29 THRU 34, AND 64 THRU 68
STONEHOUSE DISTRICT JAMES CITY COUNTY VIRGINIA



No.	DATE	REVISION / COMMENT / NOTE	BY

City of Williamsburg & County of James City
Circuit Court: This PLAT was recorded on
at 9:35 AM/PM, PG 1
DOCUMENT # 080014158
BETSY B. WOOLRIDGE, CLERK
Betsy B. Woolridge Clerk

SP-133-06 & SP-103-06	
Designed JAG	Drawn MEG
Scale 1" = 40'	Date 2/13/08
Project No. 9353-05	
Drawing No. 3 OF 3	