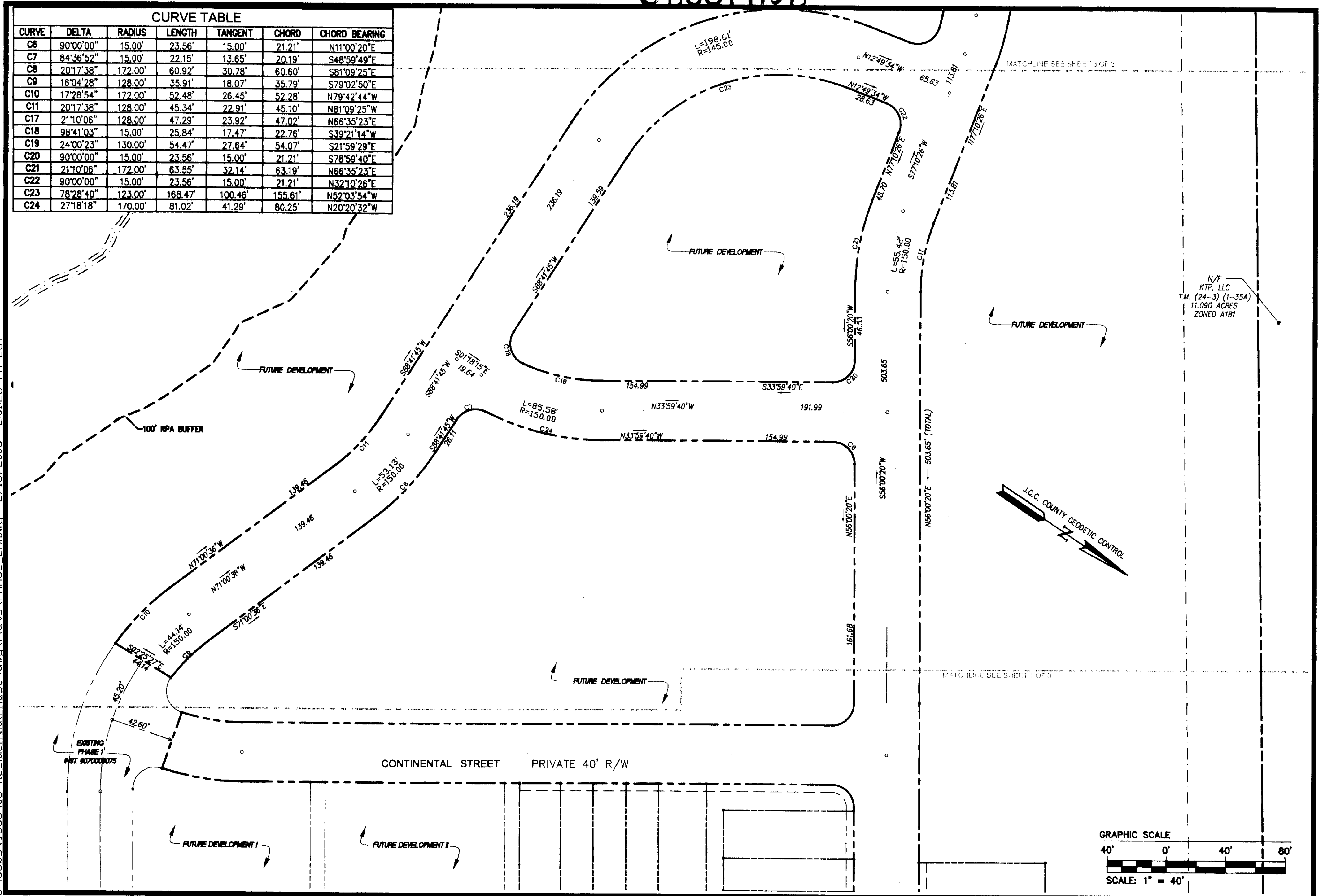
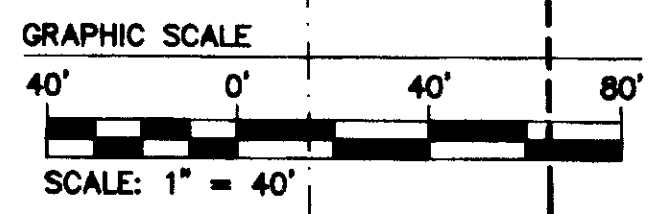


080014158

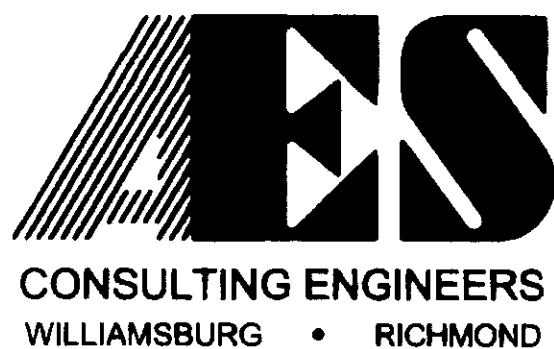
CURVE TABLE						
CURVE	DELTA	RADIUS	LENGTH	TANGENT	CHORD	CHORD BEARING
C6	90°00'00"	15.00'	23.56'	15.00'	21.21'	N11°00'20"E
C7	84°36'52"	15.00'	22.15'	13.65'	20.19'	S48°59'49"E
C8	20°17'38"	172.00'	60.92'	30.78'	60.60'	S81°09'25"E
C9	16°04'28"	128.00'	35.91'	18.07'	35.79'	S79°02'50"E
C10	17°28'54"	172.00'	52.48'	26.45'	52.28'	N79°42'44"W
C11	20°17'38"	128.00'	45.34'	22.91'	45.10'	N81°09'25"W
C17	21°10'06"	128.00'	47.29'	23.92'	47.02'	N66°35'23"E
C18	98°41'03"	15.00'	25.84'	17.47'	22.76'	S39°21'14"W
C19	24°00'23"	130.00'	54.47'	27.64'	54.07'	S21°59'29"E
C20	90°00'00"	15.00'	23.56'	15.00'	21.21'	S78°59'40"E
C21	21°10'06"	128.00'	63.55'	32.14'	63.19'	N66°35'23"E
C22	90°00'00"	15.00'	23.56'	15.00'	21.21'	N32°10'26"E
C23	78°28'40"	123.00'	168.47'	100.46'	155.61'	N52°03'54"W
C24	27°18'18"	170.00'	81.02'	41.29'	80.25'	N20°20'32"W



N/F  
KTP, LLC  
T.M. (24-3) (1-35A)  
11.090 ACRES  
ZONED A1B1

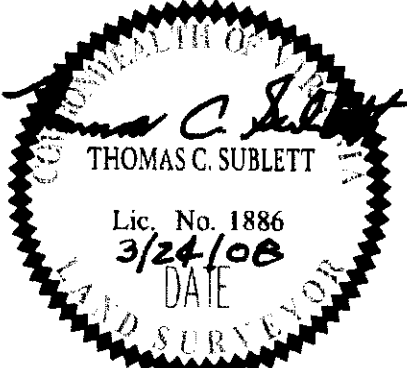


S:\Jobs\9353\05-Residential\Phase\dwg\Plats\PHASE 2A.Dwg 2/13/2008 2:01:23 PM EST



Large/Small Plat(s) Recorded  
herewith as # 080014158  
5248 Olde Towne Road, Suite 1  
Williamsburg, Virginia 23188  
(757) 253-0040  
Fax (757) 220-8994

PLAT OF SUBDIVISION  
**PHASE 2A**  
**LIBERTY CROSSING**  
LOTS  
1 THRU 5, 29 THRU 34, AND 64 THRU 68  
STONEHOUSE DISTRICT JAMES CITY COUNTY VIRGINIA



No.	DATE	REVISION / COMMENT / NOTE	BY

City of Williamsburg & County of James City  
Circuit Court: This PLAT was recorded on  
6 June 2008  
at 4:35 AM/PM, PG     
DOCUMENT # 080014158  
BETSY B. WOOLRIDGE, CLERK  
Betsy B. Woolridge Clerk

SP-133-06 & SP-103-06

Designed	Drawn
JAG	MEG
Scale	Date
1" = 40'	2/13/08
Project No.	
9353-05	
Drawing No.	
<b>2 OF 3</b>	