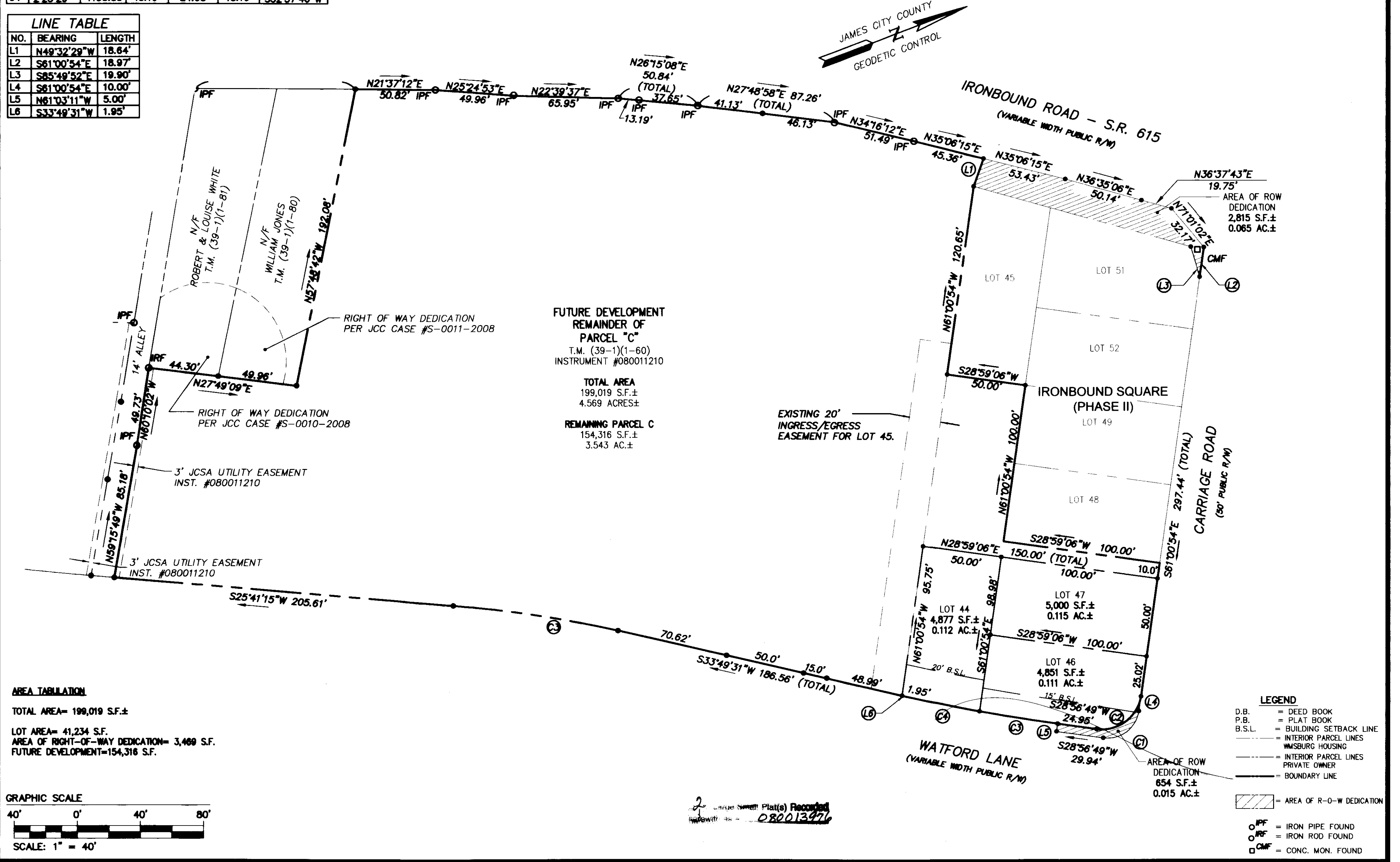


080013976

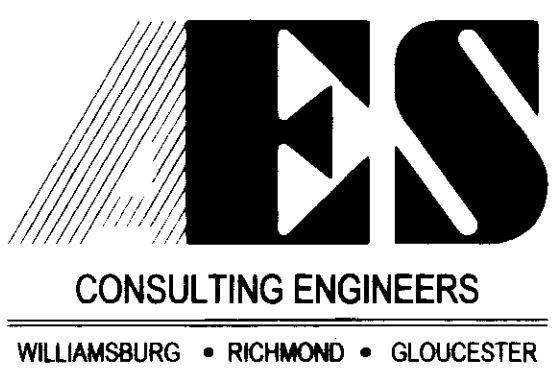
NOTE: PARCEL "C" WAS CREATED BY BOUNDARY LINE ADJUSTMENT/EXTINGUISHMENT PER JAMES CITY COUNTY CASE #S-0003-2008.

CURVE TABLE						
NO.	DELTA	RADIUS	LENGTH	TANGENT	CHORD	CH. BEARING
C1	89°57'43"	20.00'	31.40'	19.99'	28.27'	S16°02'02"E
C2	89°57'43"	25.00'	39.25'	24.98'	35.34'	S16°02'02"E
C3	2°29'12"	1153.85'	50.08'	25.04'	50.08'	S30°11'26"W
C4	2°23'29"	1153.85'	48.16'	24.08'	48.16'	S32°37'46"W

LINE TABLE		
NO.	BEARING	LENGTH
L1	N49°32'29"W	18.64'
L2	S61°00'54"E	18.97'
L3	S85°49'52"E	19.90'
L4	S61°00'54"E	10.00'
L5	N61°03'11"W	5.00'
L6	S33°49'31"W	1.95'

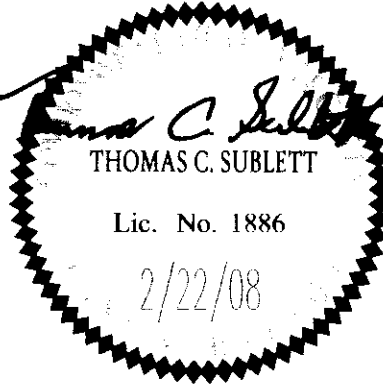


S:\Subs\001405-ironbound\01405_PLAT_SUBD_2A.DWG, 5/30/2008 2:01:50 PM, aaron.small



5248 Olde Towne Road, Suite 1
 Williamsburg, Virginia 23188
 (757) 253-0040
 Fax (757) 220-8994

PLAT OF SUBDIVISION PARCEL "C"
 WILLIAMSBURG REDEVELOPMENT AND HOUSING AUTHORITY
IRONBOUND SQUARE
 PHASE II
 LOT 44, LOTS 46-47
 BERKELEY DISTRICT JAMES CITY COUNTY VIRGINIA



No.	DATE	REVISION / COMMENT / NOTE	REVISED BY	REVIEWED BY

City of Williamsburg & County of James City
 Circuit Court: This PLAT was recorded on
 4 June 2008
 at 11:39 AM/PM, PG -
 DOCUMENT # 080013976
 BETSY B. WOOLRIDGE, CLERK
 Betsy B. Woolridge Clerk

Designed AES	Drawn JDB
Scale 1"=40'	Date 02/22/08
Project No. 9014	
Drawing No. 2 OF 2	