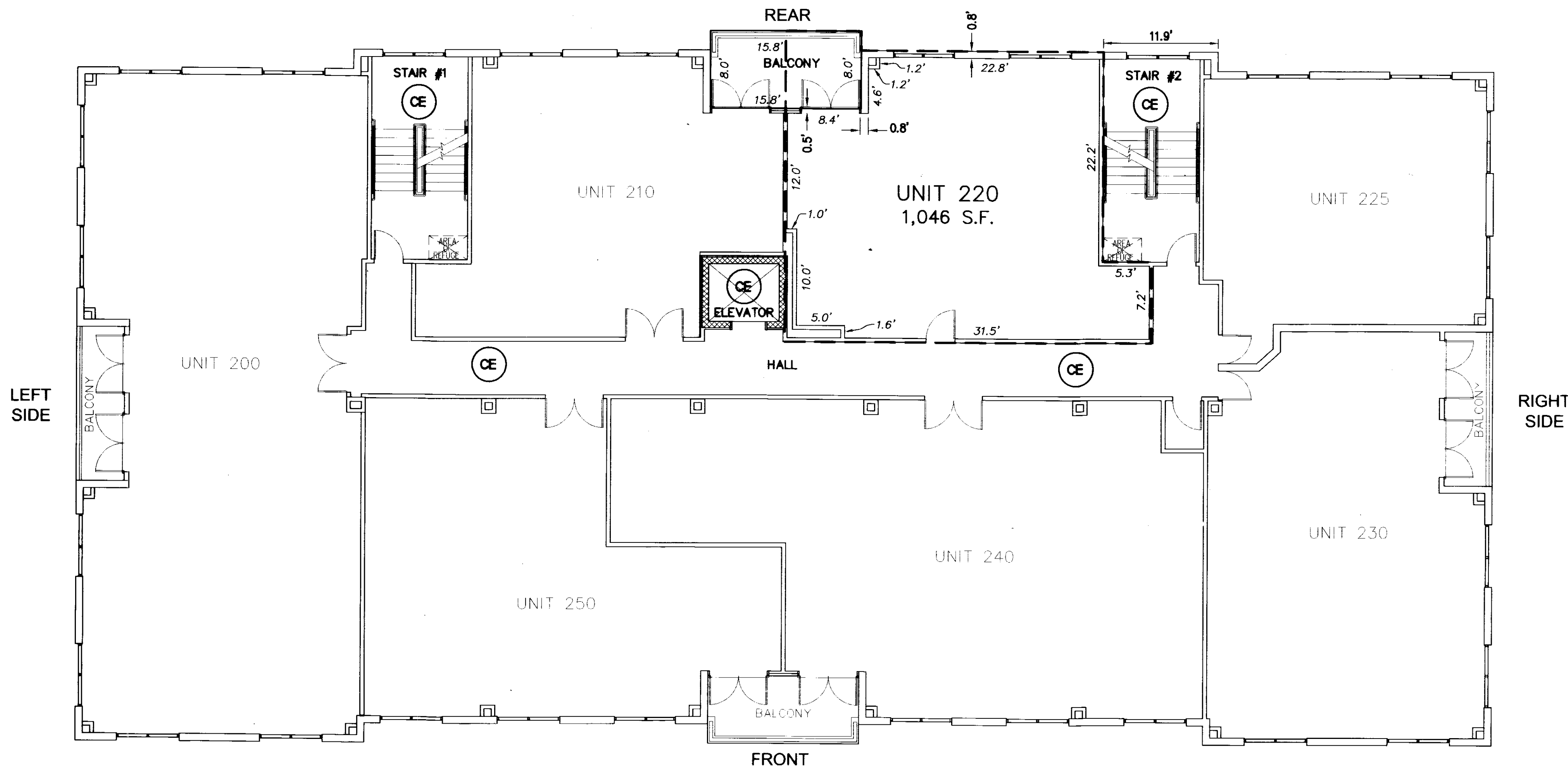
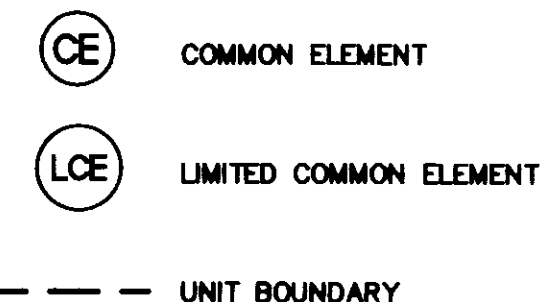




080012280

NOTES:

1. COMMON ELEMENTS, LIMITED COMMON ELEMENTS AND UNITS ARE SUBSTANTIALLY COMPLETE.
2. ALL BUILDING FLOOR PLANS AND DETAILS SHOWN ARE PER ARCHITECTURAL PLANS PROVIDED TO AES CONSULTING ENGINEERS BY THE DEVELOPER.
3. THE LOWER (HORIZONTAL) BOUNDARY OF EACH UNIT AS SHOWN IN THE PLAN IS THE HORIZONTAL PLANE OF THE UPPER SURFACE OF THE CONCRETE FLOOR SLAB.
4. THE UPPER (HORIZONTAL) BOUNDARY IS THE PLANE OF THE LOWER SURFACE OF THE SUSPENDED ACOUSTIC CEILING OF THE UNIT.
5. THE VERTICAL (SIDE) BOUNDARIES OF THE UNIT SHALL BE THE VERTICAL PLANE OF THE CENTERLINE OF THE INTERIOR WALL DIVIDING ANY TWO UNITS AND/OR THE OUTSIDE FACE OF THE EXTERIOR WALL OF THE PERIMETER UNIT, EXTENDED TO INTERSECTIONS WITH EACH OTHER AND WITH THE UPPER AND LOWER UNIT BOUNDARIES.
6. LOWER, UPPER AND SIDE BOUNDARIES ARE MORE FULLY DESCRIBED IN THE DECLARATION OF CONDOMINIUM.
7. THE INTERIOR WALLS AND ELEMENTS AS SHOWN HEREON WERE TAKEN DIRECTLY FROM ARCHITECTURAL DRAWINGS PROVIDED BY THE DEVELOPER AND ARE INTENDED FOR REFERENCE PURPOSES ONLY. INTERIOR PARTITION WALLS AND ELEMENTS HAVE NOT BEEN FIELD VERIFIED AND ARE NOT SHOWN.

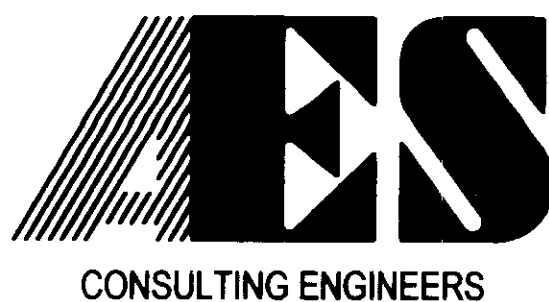


SECOND FLOOR PLAN

NOT TO SCALE

5 Original/Small Plat(s) Recorded herewith as # 080012280

S:\Jobs\6632\663215D-VenturEast\dwg\SunPlat\Phase 06 Unit 220\6632615D Condo Unit 220 02 2nd FLOOR PLAN.dwg, 4/22/2008 3:02:33 PM, Tony Taylor

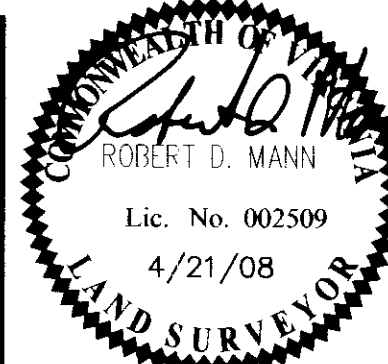


5248 Olde Towne Road, Suite 1  
Williamsburg, Virginia 23188  
(757) 253-0040  
Fax (757) 220-8994

WILLIAMSBURG • RICHMOND • GLOUCESTER • FREDERICKSBURG

"EXHIBIT 1"

PLAN OF CONDOMINIUM  
**PATRIOT PARK, A CONDOMINIUM**  
PHASE 6, UNIT 220  
OWNER/DEVELOPER: PATRIOT DEVELOPMENT ASSOCIATES, LLC  
BERKELEY DISTRICT      JAMES CITY COUNTY      VIRGINIA



No.	DATE	REVISION / COMMENT / NOTE	REVISED BY	REVIEWED BY

City of Williamsburg & County of James City  
Circuit Court: This PLAT was recorded on  
at 1:09 PM on 12 May 2008  
DOCUMENT # 080012280  
BETSY B. WOOLRIDGE, CLERK  
*Betsy Woolridge* Clerk




Designed AES	Drawn AWT
Scale NTS	Date 4/21/08
Project No. 6632-6-15D	
Drawing No. 2 of 5	

080012280



**FRONT ELEVATION (DISCOVERY PARK BLVD.)**

NOT TO SCALE

-  COMMON ELEMENT
-  LIMITED COMMON ELEMENT
-  UNIT BOUNDARY

**NOTES:**

1. COMMON ELEMENTS, LIMITED COMMON ELEMENTS AND UNITS ARE SUBSTANTIALLY COMPLETE.
2. ALL BUILDING FLOOR PLANS AND DETAILS SHOWN ARE PER ARCHITECTURAL PLANS PROVIDED TO AES CONSULTING ENGINEERS BY THE DEVELOPER.
3. THE LOWER (HORIZONTAL) BOUNDARY OF EACH UNIT AS SHOWN IN THE PLAN IS THE HORIZONTAL PLANE OF THE UPPER SURFACE OF THE CONCRETE FLOOR SLAB.
4. THE UPPER (HORIZONTAL) BOUNDARY IS THE PLANE OF THE LOWER SURFACE OF THE SUSPENDED ACOUSTIC CEILING OF THE UNIT.
5. THE VERTICAL (SIDE) BOUNDARIES OF THE UNIT SHALL BE THE VERTICAL PLANE OF THE CENTERLINE OF THE INTERIOR WALL DIVIDING ANY TWO UNITS AND/OR THE OUTSIDE FACE OF THE EXTERIOR WALL OF THE PERIMETER UNIT, EXTENDED TO INTERSECTIONS WITH EACH OTHER AND WITH THE UPPER AND LOWER UNIT BOUNDARIES.
6. LOWER, UPPER AND SIDE BOUNDARIES ARE MORE FULLY DESCRIBED IN THE DECLARATION OF CONDOMINIUM.
7. THE INTERIOR WALLS AND ELEMENTS AS SHOWN HEREON WERE TAKEN DIRECTLY FROM ARCHITECTURAL DRAWINGS PROVIDED BY THE DEVELOPER AND ARE INTENDED FOR REFERENCE PURPOSES ONLY. INTERIOR PARTITION WALLS AND ELEMENTS HAVE NOT BEEN FIELD VERIFIED AND ARE NOT SHOWN.



**LEFT SIDE ELEVATION**

NOT TO SCALE

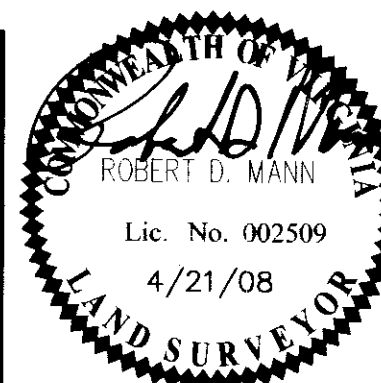
5 Large/Small Plat(s) Recorded  
herewith as # 080012280

**"EXHIBIT 1"**

PLAN OF CONDOMINIUM  
**PATRIOT PARK, A CONDOMINIUM**  
PHASE 6, UNIT 220

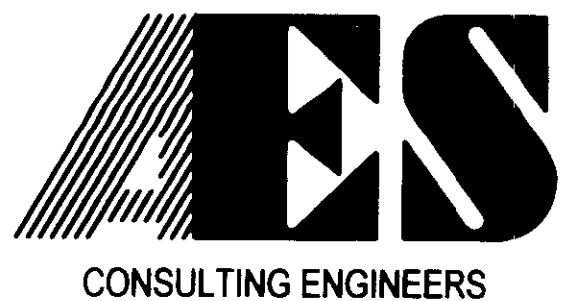
OWNER/DEVELOPER: PATRIOT DEVELOPMENT ASSOCIATES, LLC

BERKELEY DISTRICT      JAMES CITY COUNTY      VIRGINIA



No.	DATE	REVISION / COMMENT / NOTE	REVISED BY	REVIEWED BY

City of Williamsburg & County of James City  
Circuit Court: This PLAT was recorded on  
*12 May 2008*  
at *1:09* AM/PM, PG *2*  
DOCUMENT # *080012280*  
BETSY B. WOOLRIDGE, CLERK  
*Betsy Woolridge* Clerk



5248 Olde Towne Road, Suite 1  
Williamsburg, Virginia 23188  
(757) 253-0040  
Fax (757) 220-8994

Designed <b>AES</b>	Drawn <b>AWT</b>
Scale <b>NTS</b>	Date <b>4/21/08</b>

Project No.  
**6632-6-15D**  
Drawing No.



**3 of 5**

080012280



**REAR ELEVATION (PARKING LOT)**

NOT TO SCALE

-  COMMON ELEMENT
-  LIMITED COMMON ELEMENT
- UNIT BOUNDARY

**NOTES:**

1. COMMON ELEMENTS, LIMITED COMMON ELEMENTS AND UNITS ARE SUBSTANTIALLY COMPLETE.
2. ALL BUILDING FLOOR PLANS AND DETAILS SHOWN ARE PER ARCHITECTURAL PLANS PROVIDED TO AES CONSULTING ENGINEERS BY THE DEVELOPER.
3. THE LOWER (HORIZONTAL) BOUNDARY OF EACH UNIT AS SHOWN IN THE PLAN IS THE HORIZONTAL PLANE OF THE UPPER SURFACE OF THE CONCRETE FLOOR SLAB.
4. THE UPPER (HORIZONTAL) BOUNDARY IS THE PLANE OF THE LOWER SURFACE OF THE SUSPENDED ACOUSTIC CEILING OF THE UNIT.
5. THE VERTICAL (SIDE) BOUNDARIES OF THE UNIT SHALL BE THE VERTICAL PLANE OF THE CENTERLINE OF THE INTERIOR WALL DIVIDING ANY TWO UNITS AND/OR THE OUTSIDE FACE OF THE EXTERIOR WALL OF THE PERIMETER UNIT, EXTENDED TO INTERSECTIONS WITH EACH OTHER AND WITH THE UPPER AND LOWER UNIT BOUNDARIES.
6. LOWER, UPPER AND SIDE BOUNDARIES ARE MORE FULLY DESCRIBED IN THE DECLARATION OF CONDOMINIUM.
7. THE INTERIOR WALLS AND ELEMENTS AS SHOWN HEREON WERE TAKEN DIRECTLY FROM ARCHITECTURAL DRAWINGS PROVIDED BY THE DEVELOPER AND ARE INTENDED FOR REFERENCE PURPOSES ONLY. INTERIOR PARTITION WALLS AND ELEMENTS HAVE NOT BEEN FIELD VERIFIED AND ARE NOT SHOWN.

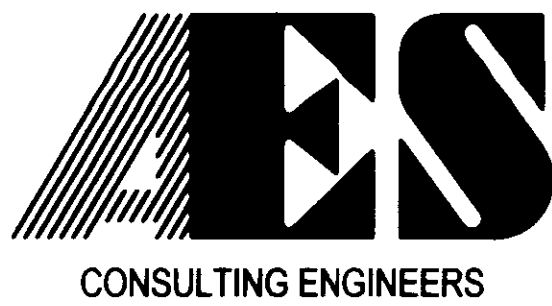


**RIGHT SIDE ELEVATION**

NOT TO SCALE

5-arger/Small-Plates Recorded herewith as # 080012280

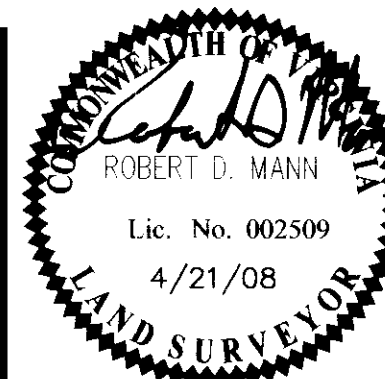
"EXHIBIT 1"



5248 Olde Towne Road, Suite 1  
Williamsburg, Virginia 23188  
(757) 253-0040  
Fax (757) 220-8994

WILLIAMSBURG • RICHMOND • GLOUCESTER • FREDERICKSBURG

PLAN OF CONDOMINIUM  
**PATRIOT PARK, A CONDOMINIUM**  
PHASE 6, UNIT 220  
OWNER/DEVELOPER: PATRIOT DEVELOPMENT ASSOCIATES, LLC  
BERKELEY DISTRICT      JAMES CITY COUNTY      VIRGINIA



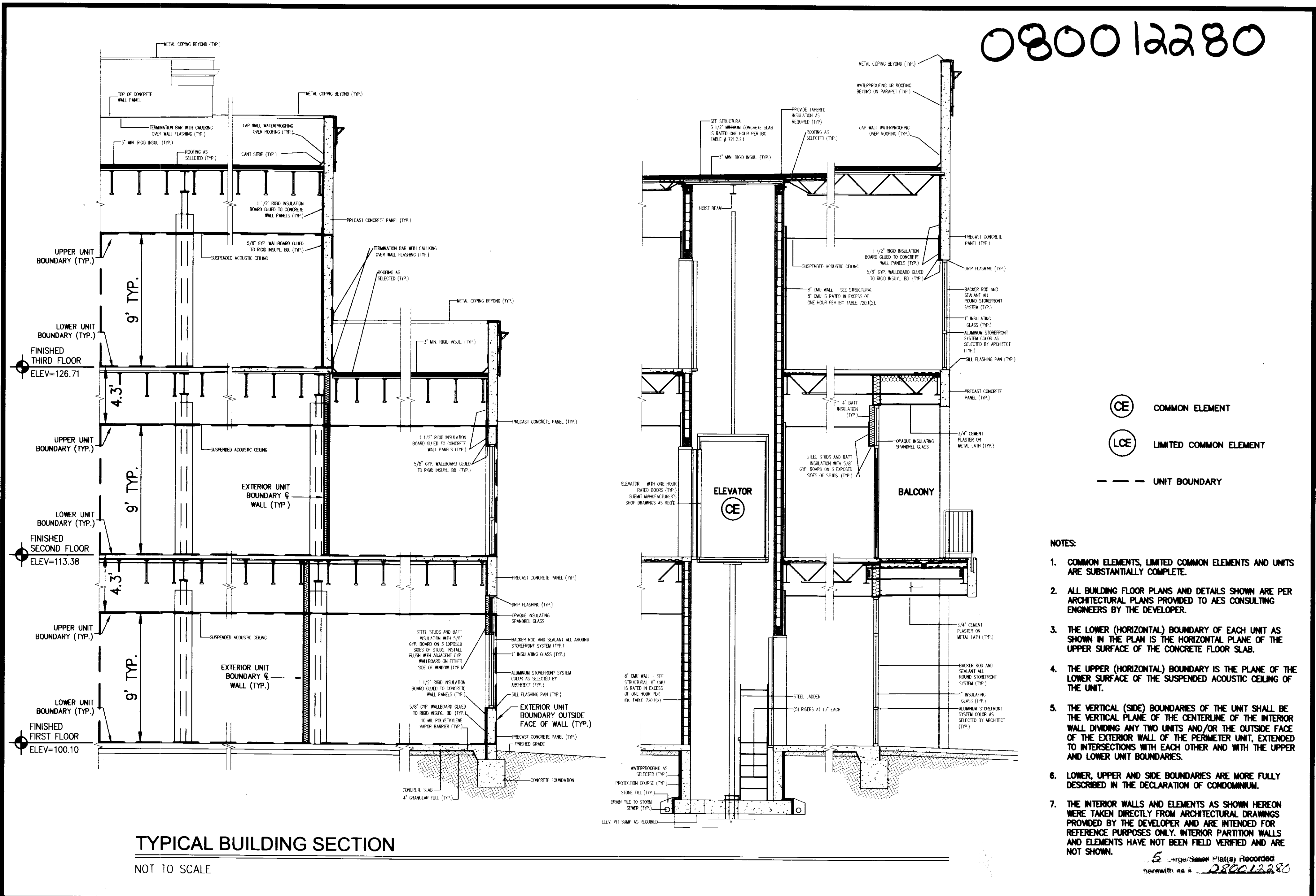
No.	DATE	REVISION / COMMENT / NOTE	REVISED BY	REVIEWED BY

City of Williamsburg & County of James City  
Circuit Court: This PLAT was recorded on  
at 1:09 AM/PM, PG. 12 May 2008  
DOCUMENT # 080012280  
BETSY B. WOOLRIDGE, CLERK  
*Betsy B. Woolridge* Clerk

Designed AES	Drawn AWT
Scale NTS	Date 4/21/08
Project No. 6632-6-15D	
Drawing No. 4 of 5	



080012280



**TYPICAL BUILDING SECTION**

NOT TO SCALE

- CE COMMON ELEMENT
- LCE LIMITED COMMON ELEMENT
- UNIT BOUNDARY

- NOTES:**
1. COMMON ELEMENTS, LIMITED COMMON ELEMENTS AND UNITS ARE SUBSTANTIALLY COMPLETE.
  2. ALL BUILDING FLOOR PLANS AND DETAILS SHOWN ARE PER ARCHITECTURAL PLANS PROVIDED TO AES CONSULTING ENGINEERS BY THE DEVELOPER.
  3. THE LOWER (HORIZONTAL) BOUNDARY OF EACH UNIT AS SHOWN IN THE PLAN IS THE HORIZONTAL PLANE OF THE UPPER SURFACE OF THE CONCRETE FLOOR SLAB.
  4. THE UPPER (HORIZONTAL) BOUNDARY IS THE PLANE OF THE LOWER SURFACE OF THE SUSPENDED ACOUSTIC CEILING OF THE UNIT.
  5. THE VERTICAL (SIDE) BOUNDARIES OF THE UNIT SHALL BE THE VERTICAL PLANE OF THE CENTERLINE OF THE INTERIOR WALL DIVIDING ANY TWO UNITS AND/OR THE OUTSIDE FACE OF THE EXTERIOR WALL OF THE PERIMETER UNIT, EXTENDED TO INTERSECTIONS WITH EACH OTHER AND WITH THE UPPER AND LOWER UNIT BOUNDARIES.
  6. LOWER, UPPER AND SIDE BOUNDARIES ARE MORE FULLY DESCRIBED IN THE DECLARATION OF CONDOMINIUM.
  7. THE INTERIOR WALLS AND ELEMENTS AS SHOWN HEREON WERE TAKEN DIRECTLY FROM ARCHITECTURAL DRAWINGS PROVIDED BY THE DEVELOPER AND ARE INTENDED FOR REFERENCE PURPOSES ONLY. INTERIOR PARTITION WALLS AND ELEMENTS HAVE NOT BEEN FIELD VERIFIED AND ARE NOT SHOWN.

5 Large/Small Plats Recorded herewith as # 080012280

S:\Jobs\663215615D-VenturEast\dwg\SunPlat\Phase 06 Unit 220\663215D Condo Unit 220 05 SECTIONS.dwg, 4/22/2008 3:04:18 PM, Tony.Taylor

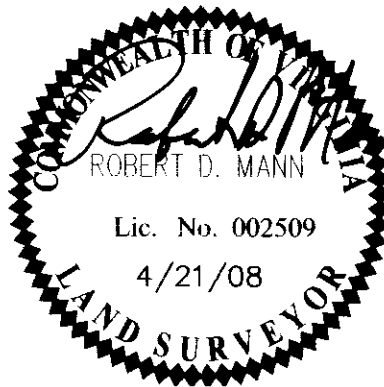
**AES**  
CONSULTING ENGINEERS  
WILLIAMSBURG • RICHMOND • GLOUCESTER • FREDERICKSBURG

5248 Olde Towne Road, Suite 1  
Williamsburg, Virginia 23188  
(757) 253-0040  
Fax (757) 220-8994

"EXHIBIT 1"

PLAN OF CONDOMINIUM  
**PATRIOT PARK, A CONDOMINIUM**  
PHASE 6, UNIT 220  
OWNER/DEVELOPER: PATRIOT DEVELOPMENT ASSOCIATES, LLC

BERKELEY DISTRICT      JAMES CITY COUNTY      VIRGINIA



		City of Williamsburg & County of James City Circuit Court: This PLAT was recorded on <i>12 May 2008</i> at 1:09 AM PM, PB _____ PG _____ DOCUMENT # <i>080012280</i> BETSY B. WOOLRIDGE, CLERK <i>Betsy B. Woolridge</i> Clerk		
No.	DATE	REVISION / COMMENT / NOTE	REVISOR BY	REVIEWED BY

Designed AES	Drawn AWT
Scale NTS	Date 4/21/08
Project No. 6632-6-15D	
Drawing No. 5 of 5	