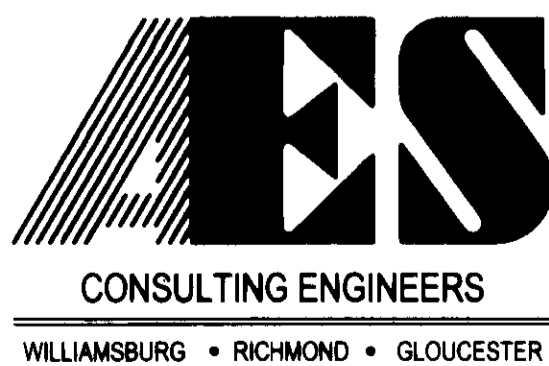
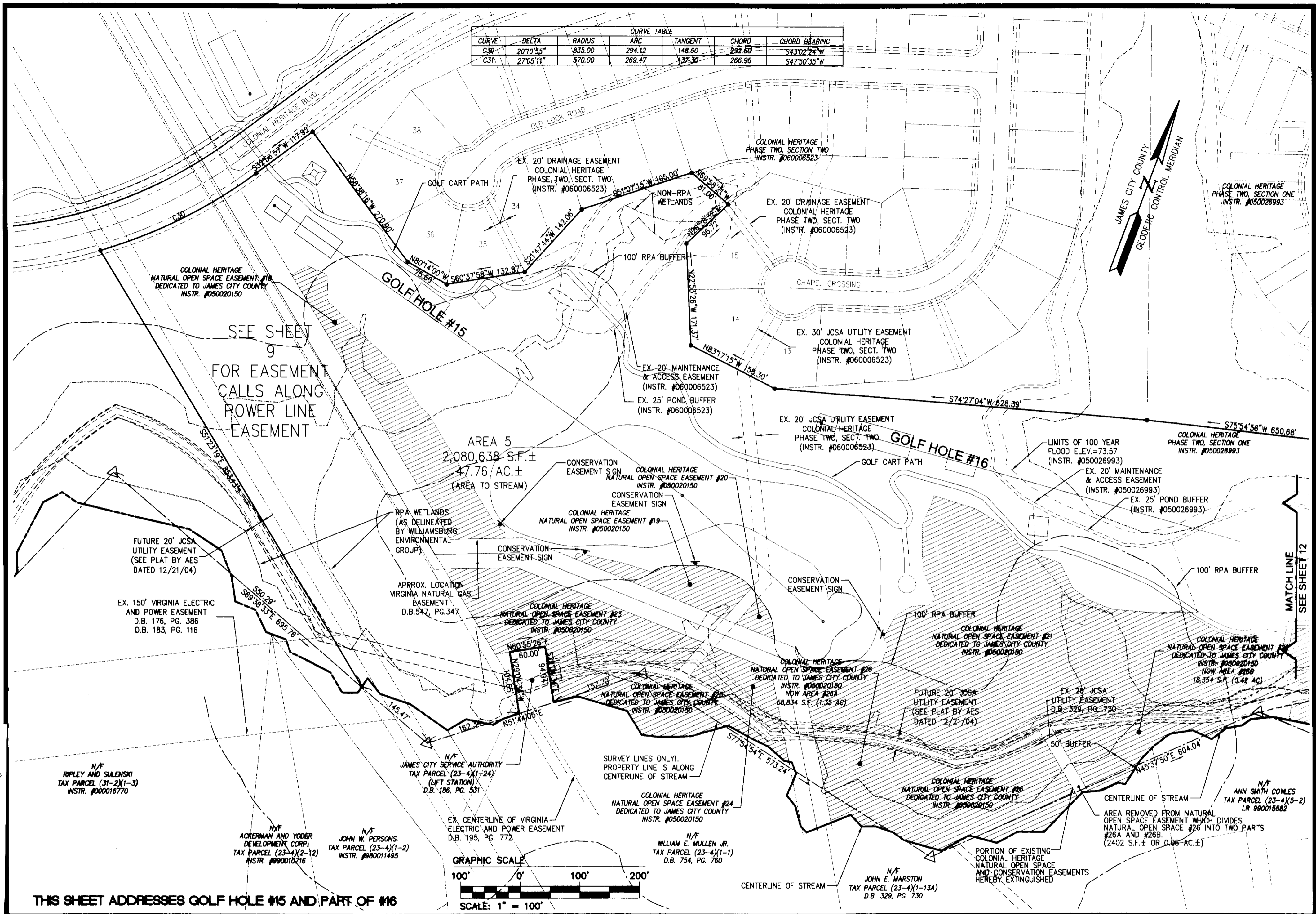


080011370

Large/Small/Plat(s) Resources  
Inquiry on # 280 011370

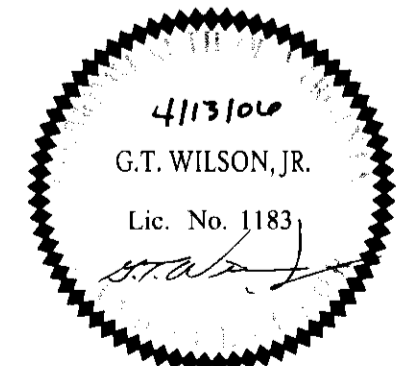
City of Williamsburg & County of James City  
Circuit Court. This PLAT was recorded on  
April 24, 2008  
at 11:51 AM/PM PB PG  
DOCUMENT # 080011370  
BETSY B. WOOLRIDGE, CLERK  
Betsy B. Woolridge Clerk



2548 Olde Towne Road, Suite 1  
Williamsburg, Virginia 23188  
(757) 253-0040  
Fax (757) 220-8994

**PLAT OF SUBDIVISION**  
**COLONIAL HERITAGE**  
18 HOLE GOLF COURSE  
PREPARED FOR COLONIAL HERITAGE LLC

STONEHOUSE DISTRICT    JAMES CITY COUNTY    VIRGINIA



No.	DATE	REVISION / COMMENT / NOTE	BY
3	2/1/08	REVISED PER JAMES CITY COUNTY COMMENTS	HWP
2	11/27/07	REVISED PER JAMES CITY COUNTY COMMENTS	HWP
1	10/18/06	REVISED PER JAMES CITY COUNTY COMMENTS	HWP

Designed	Drawn
HWP	HEB
Scale	Date
1"=100'	4/13/08
Project No.	
8861-11-P	
Drawing No.	
11 of 12	