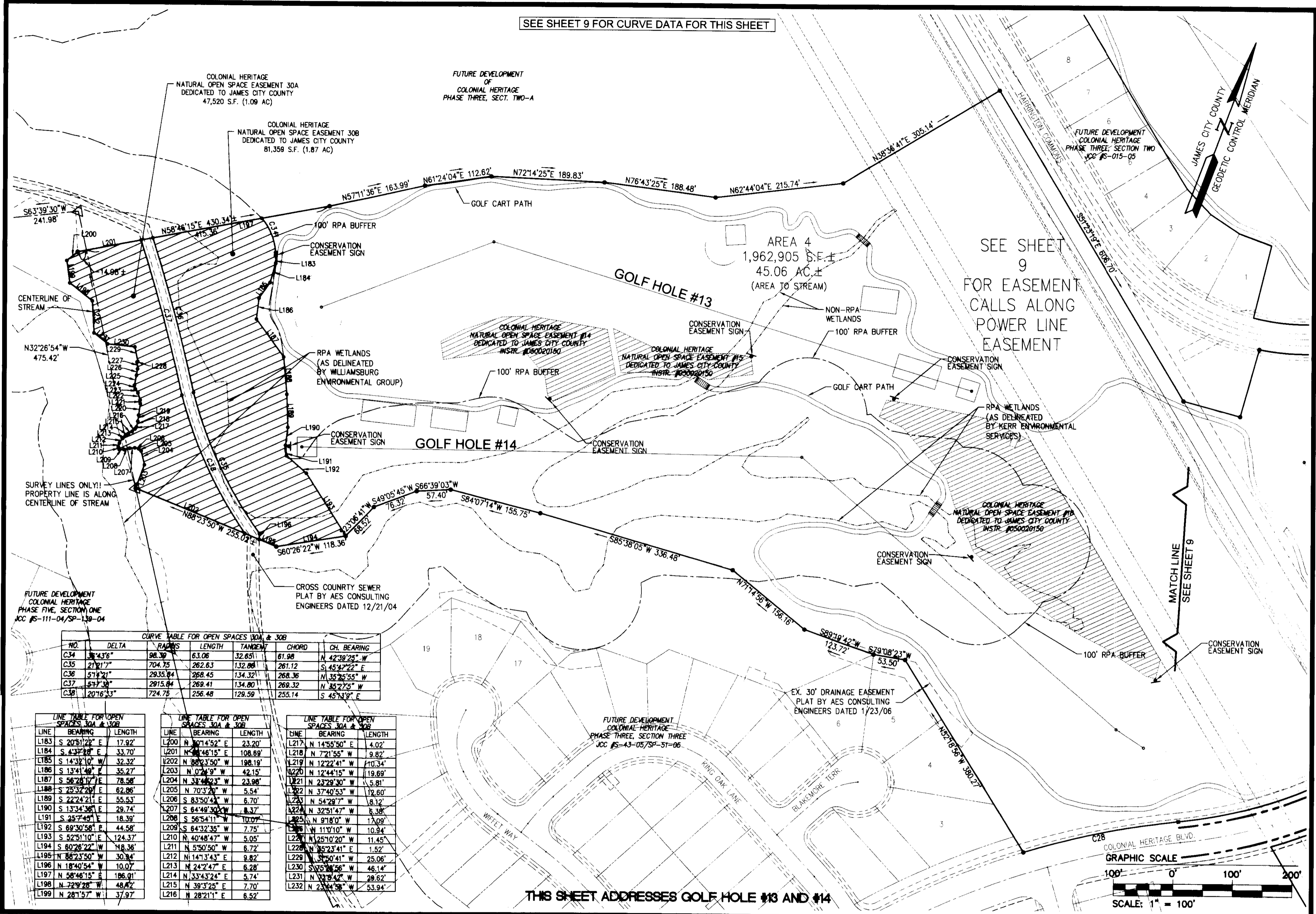


SEE SHEET 9 FOR CURVE DATA FOR THIS SHEET

080011370

Large (Small Print) - 1/4" = 100'
Inch as shown on # 080011370

City of Williamsburg & County of James City
Circuit Court. This PLAT was recorded on
APR 1 29 2008
at 11:51 AM in PB PG
DOCUMENT # 080011370
BETSY B. WOOLRIDGE, CLERK
Betsy Woolridge Clerk



CURVE TABLE FOR OPEN SPACES 30A & 30B

NO.	DELTA	RADIUS	LENGTH	TANGENT	CHORD	CH. BEARING
C34	38°43'6"	98.39	63.06	32.651	61.98	N 42°39'25" W
C35	21°21'7"	704.75	262.63	132.86	261.12	S 45°42'22" E
C36	57°14'21"	2935.84	268.45	134.321	268.36	N 35°25'55" W
C37	57°33'	2915.84	269.41	134.80	269.32	N 35°22'5" W
C38	20°16'33"	724.75	256.48	129.59	255.14	S 45°13'9" E

LINE	BEARING	LENGTH
L183	S 20°51'22" E	17.92'
L184	S 4°37'30" E	33.70'
L185	S 14°32'10" W	32.32'
L186	S 13°41'49" E	35.27'
L187	S 56°28'17" E	78.56'
L188	S 25°32'20" E	62.86'
L189	S 22°24'21" E	55.53'
L190	S 13°34'36" E	29.74'
L191	S 25°7'45" E	18.39'
L192	S 69°30'56" E	44.58'
L193	S 52°51'10" E	124.37'
L194	S 80°28'22" W	18.36'
L195	N 86°23'50" W	30.84'
L196	N 18°40'54" W	10.07'
L197	N 58°46'15" E	186.01'
L198	N 72°9'28" W	48.42'
L199	N 28°15'7" W	37.97'

LINE	BEARING	LENGTH
L200	N 30°14'52" E	23.20'
L201	N 80°46'15" E	108.69'
L202	N 88°23'50" W	198.19'
L203	N 0°24'9" W	42.15'
L204	N 38°46'23" W	23.98'
L205	N 70°3'20" W	5.54'
L206	S 83°50'43" W	6.70'
L207	S 64°49'30" W	8.37'
L208	S 56°54'11" W	10.07'
L209	S 64°32'35" W	7.75'
L210	N 40°48'47" W	5.05'
L211	N 5°50'50" W	6.72'
L212	N 14°13'43" E	9.82'
L213	N 24°2'47" E	6.28'
L214	N 33°43'24" E	5.74'
L215	N 39°3'25" E	7.70'
L216	N 28°21'1" E	6.52'

LINE	BEARING	LENGTH
L217	N 14°55'50" E	4.02'
L218	N 72°1'55" W	9.82'
L219	N 12°22'41" W	10.34'
L220	N 12°44'15" W	19.69'
L221	N 23°29'30" W	5.81'
L222	N 37°40'53" W	12.60'
L223	N 54°29'7" W	8.12'
L224	N 32°51'47" W	6.38'
L225	N 97°8'0" W	17.09'
L226	N 11°0'10" W	10.94'
L227	N 25°10'20" W	11.45'
L228	N 35°23'41" E	1.52'
L229	S 3°50'41" W	25.06'
L230	S 75°58'56" W	46.14'
L231	N 33°8'42" E	28.62'
L232	N 23°44'58" W	53.94'

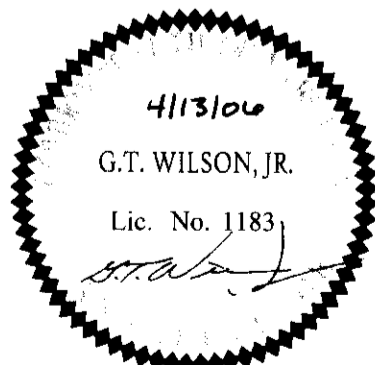
THIS SHEET ADDRESSES GOLF HOLE #13 AND #14



5248 Olde Towne Road, Suite 1
Williamsburg, Virginia 23188
(757) 253-0040
Fax (757) 220-8994

PLAT OF SUBDIVISION
COLONIAL HERITAGE
18 HOLE GOLF COURSE
PREPARED FOR COLONIAL HERITAGE LLC

STONEHOUSE DISTRICT JAMES CITY COUNTY VIRGINIA



No.	DATE	REVISION / COMMENT / NOTE	BY
3	2/1/08	REVISED PER JAMES CITY COUNTY COMMENTS	HWP
2	11/27/07	REVISED PER JAMES CITY COUNTY COMMENTS	HWP
1	10/18/06	REVISED PER JAMES CITY COUNTY COMMENTS	HWP

Designed	Drawn
HWP	HEB
Scale	Date
1"=100'	4/13/08
Project No.	
8881-11-P	
Drawing No.	
10 of 12	