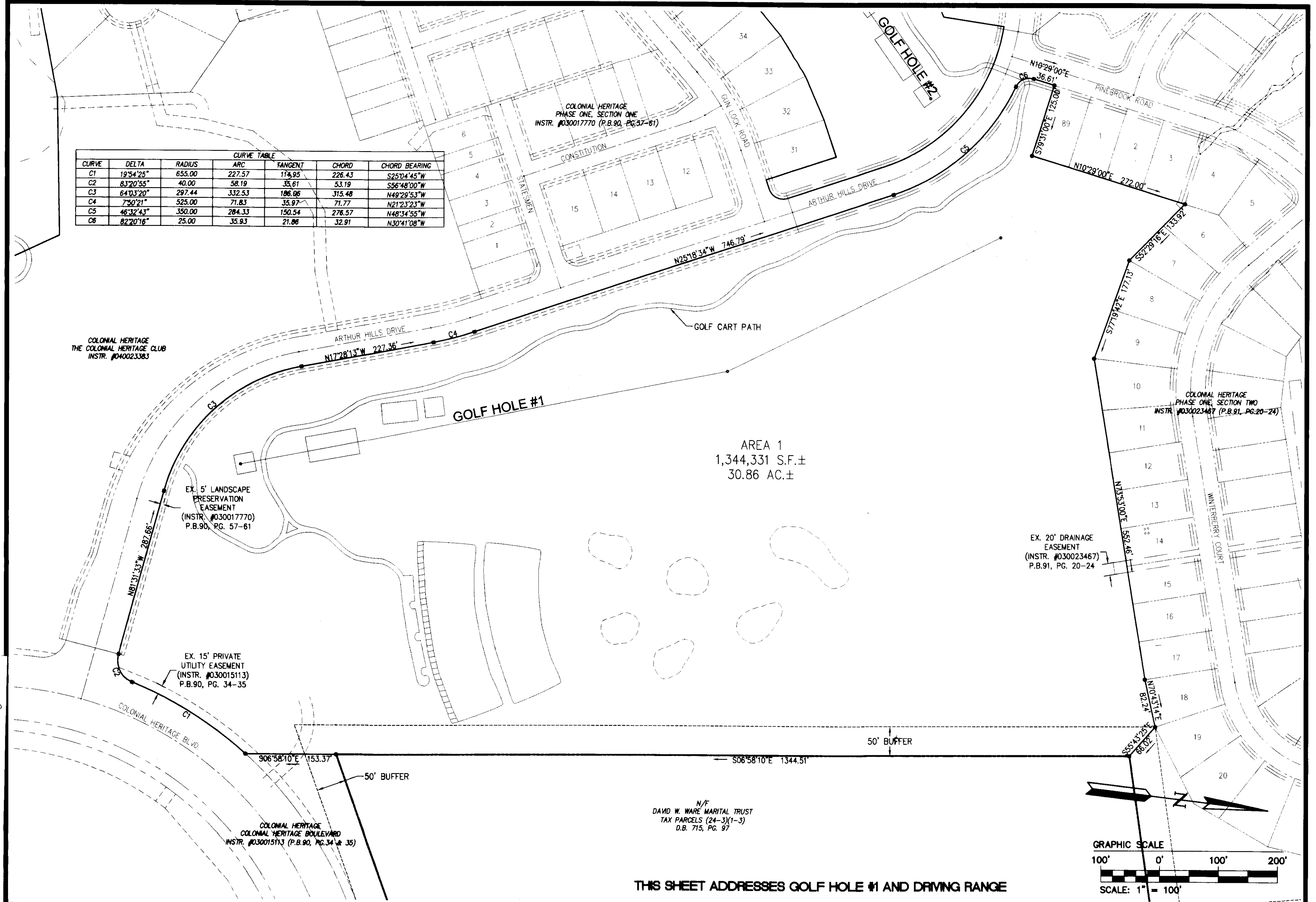


080011370

LaTanya Bessert Pugh (s) Recorded herewith as # 080011370

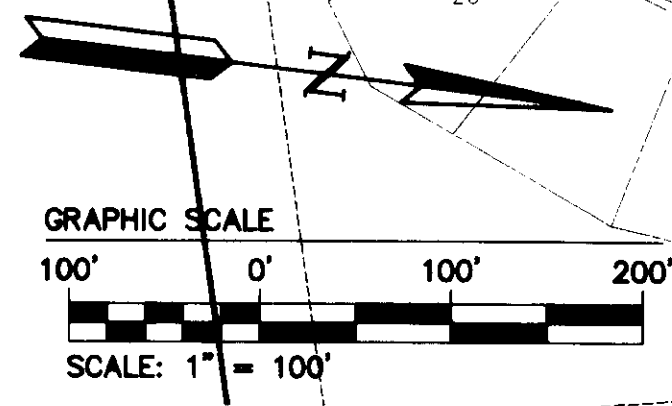
City of Williamsburg & County of James City Circuit Court. This PLAT was recorded on April 29 2008 at 11:51 AM/PM PB PG DOCUMENT # 080011370 BETSY B. WOOLRIDGE, CLERK Doreen J. Woolridge Clerk

CURVE	DELTA	RADIUS	ARC	TANGENT	CHORD	CHORD BEARING
C1	19°54'25"	655.00	227.57	119.95	226.43	S25°04'45"W
C2	83°20'55"	40.00	58.19	35.61	53.19	S56°48'00"W
C3	64°03'20"	297.44	332.53	186.06	315.48	N49°29'53"W
C4	75°02'21"	525.00	71.83	35.97	71.77	N21°23'23"W
C5	46°32'43"	350.00	284.33	150.54	276.57	N48°34'55"W
C6	82°20'16"	25.00	35.93	21.86	32.91	N30°41'08"W

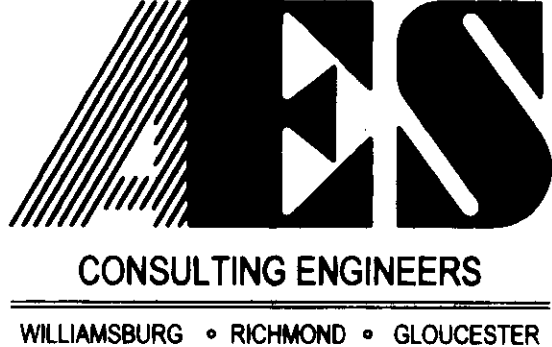


AREA 1
1,344,331 S.F.±
30.86 AC.±

N/F
DAVID W. WARE MARITAL TRUST
TAX PARCELS (24-3)(1-3)
D.B. 715, PG. 97



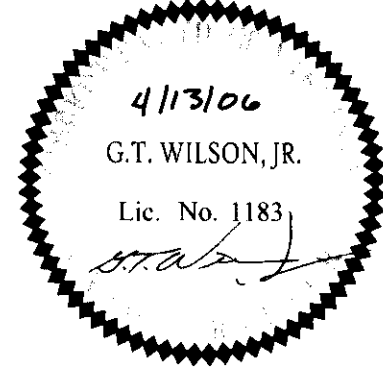
THIS SHEET ADDRESSES GOLF HOLE #1 AND DRIVING RANGE



5248 Olde Towne Road, Suite 1
Williamsburg, Virginia 23188
(757) 253-0040
Fax (757) 220-8994

PLAT OF SUBDIVISION
COLONIAL HERITAGE
18 HOLE GOLF COURSE
PREPARED FOR COLONIAL HERITAGE LLC

STONEHOUSE DISTRICT JAMES CITY COUNTY VIRGINIA



No.	DATE	REVISION / COMMENT / NOTE	BY
3	2/1/08	REVISED PER JAMES CITY COUNTY COMMENTS	HWP
2	11/27/07	REVISED PER JAMES CITY COUNTY COMMENTS	HWP
1	10/18/06	REVISED PER JAMES CITY COUNTY COMMENTS	HWP

Designed HWP	Drawn HEB
Scale 1"=100'	Date 4/13/08
Project No. 8881-11-P	
Drawing No. 3 of 12	

WILLIAMSBURG • RICHMOND • GLOUCESTER