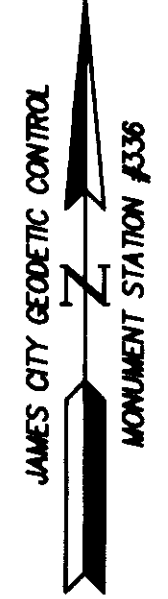
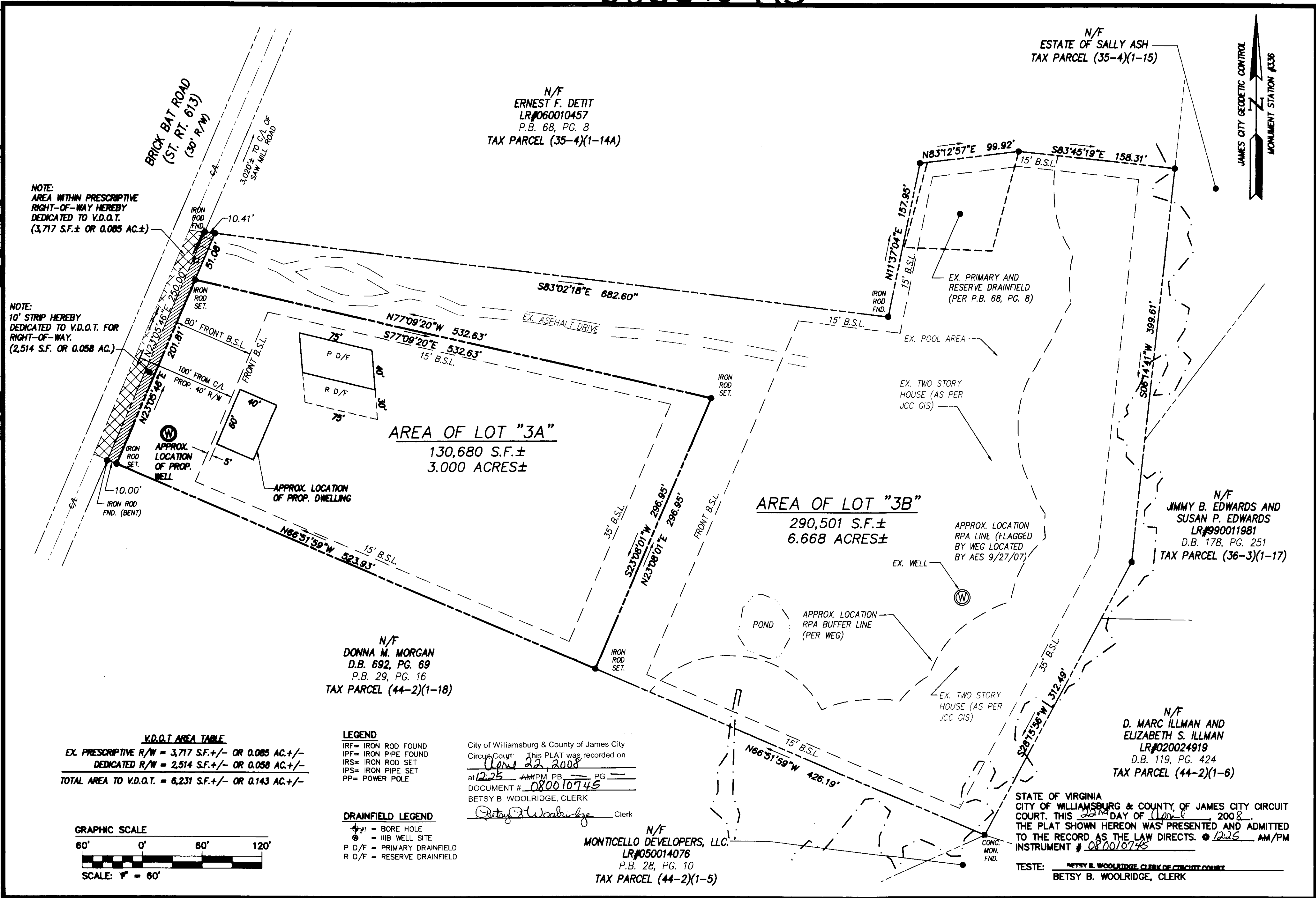


080010745

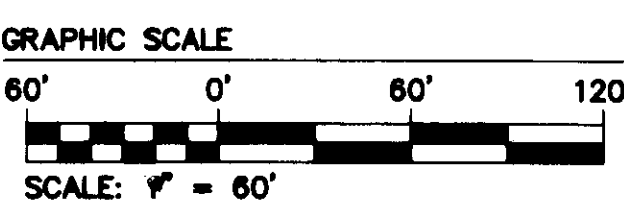


NOTE:
AREA WITHIN PRESCRIPTIVE
RIGHT-OF-WAY HEREBY
DEDICATED TO V.D.O.T.
(3,717 S.F.± OR 0.085 AC.±)

NOTE:
10' STRIP HEREBY
DEDICATED TO V.D.O.T. FOR
RIGHT-OF-WAY.
(2,514 S.F. OR 0.058 AC.)

V.D.O.T. AREA TABLE

EX. PRESCRIPTIVE R/W = 3,717 S.F.±/- OR 0.085 AC.±/-
DEDICATED R/W = 2,514 S.F.±/- OR 0.058 AC.±/-
TOTAL AREA TO V.D.O.T. = 6,231 S.F.±/- OR 0.143 AC.±/-

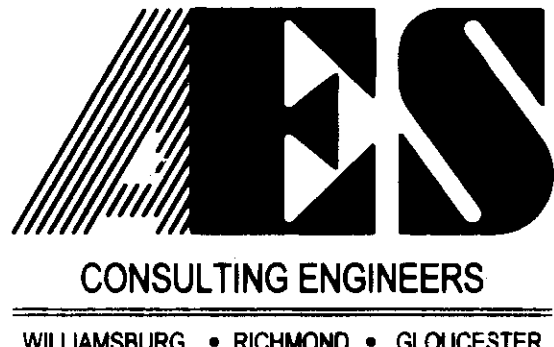


- LEGEND**
- IRF= IRON ROD FOUND
 - IPF= IRON PIPE FOUND
 - IRS= IRON ROD SET
 - IPS= IRON PIPE SET
 - PP= POWER POLE
- DRAINFIELD LEGEND**
- ⊕ = BORE HOLE
 - ⊙ = IIIB WELL SITE
 - P D/F = PRIMARY DRAINFIELD
 - R D/F = RESERVE DRAINFIELD

City of Williamsburg & County of James City
Circuit Court: This PLAT was recorded on
June 22, 2008
at 12:25 AM/PM, PG. 11
DOCUMENT # 080010745
BETSY B. WOOLRIDGE, CLERK
Betsy B. Woolridge Clerk

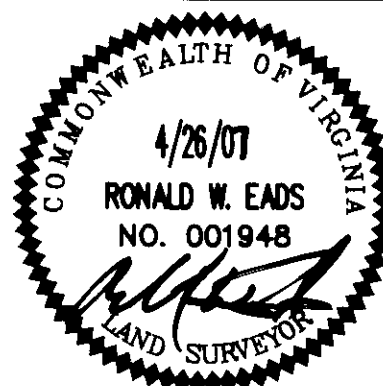
N/F
MONTICELLO DEVELOPERS, LLC.
LR#050014076
P.B. 28, PG. 10
TAX PARCEL (44-2)(1-5)

STATE OF VIRGINIA
CITY OF WILLIAMSBURG & COUNTY OF JAMES CITY CIRCUIT
COURT. THIS 22nd DAY OF June 2008.
THE PLAT SHOWN HEREON WAS PRESENTED AND ADMITTED
TO THE RECORD AS THE LAW DIRECTS. @ 12:25 AM/PM
INSTRUMENT # 080010745
TESTE: BETSY B. WOOLRIDGE, CLERK OF CIRCUIT COURT
BETSY B. WOOLRIDGE, CLERK



5248 Olde Towne Road, Suite 1
Williamsburg, Virginia 23188
(757) 253-0040
Fax (757) 220-8994

PLAT OF SUBDIVISION
OF LOT 3 "DOROTHY E. MIDKIFF" SUBDIVISION
STANDING IN THE NAME OF
JOSEPH F. AND PATRICIA A. CHAUVIN
POWhatan DISTRICT JAMES CITY COUNTY VIRGINIA



No.	DATE	REVISION / COMMENT / NOTE	REVISED BY	REVIEWED BY
4.	02/26/08	REVISED FRONT BSL PER COUNTY COMMENT	RWE	RWE
3.	10/26/07	REVISED PER COUNTY COMMENT LETTER	JDB	RWE
2.	9/27/07	ADDED WETLAND FLAGS AS SURVEYED	JDB	RWE
1.	5/18/07	REVISED PER COUNTY COMMENT LETTER	JDB	RWE

Designed AES	Drawn JDB
Scale 1"=60'	Date 4/26/07
Project No. 9853	
Drawing No. 2 OF 2	

S:\Jobs\9853\00-3542 Brick Bat Road.dwg\Sur\Plots\985300_SUDB.dwg 9/16/2007 9:25:04 AM EDT