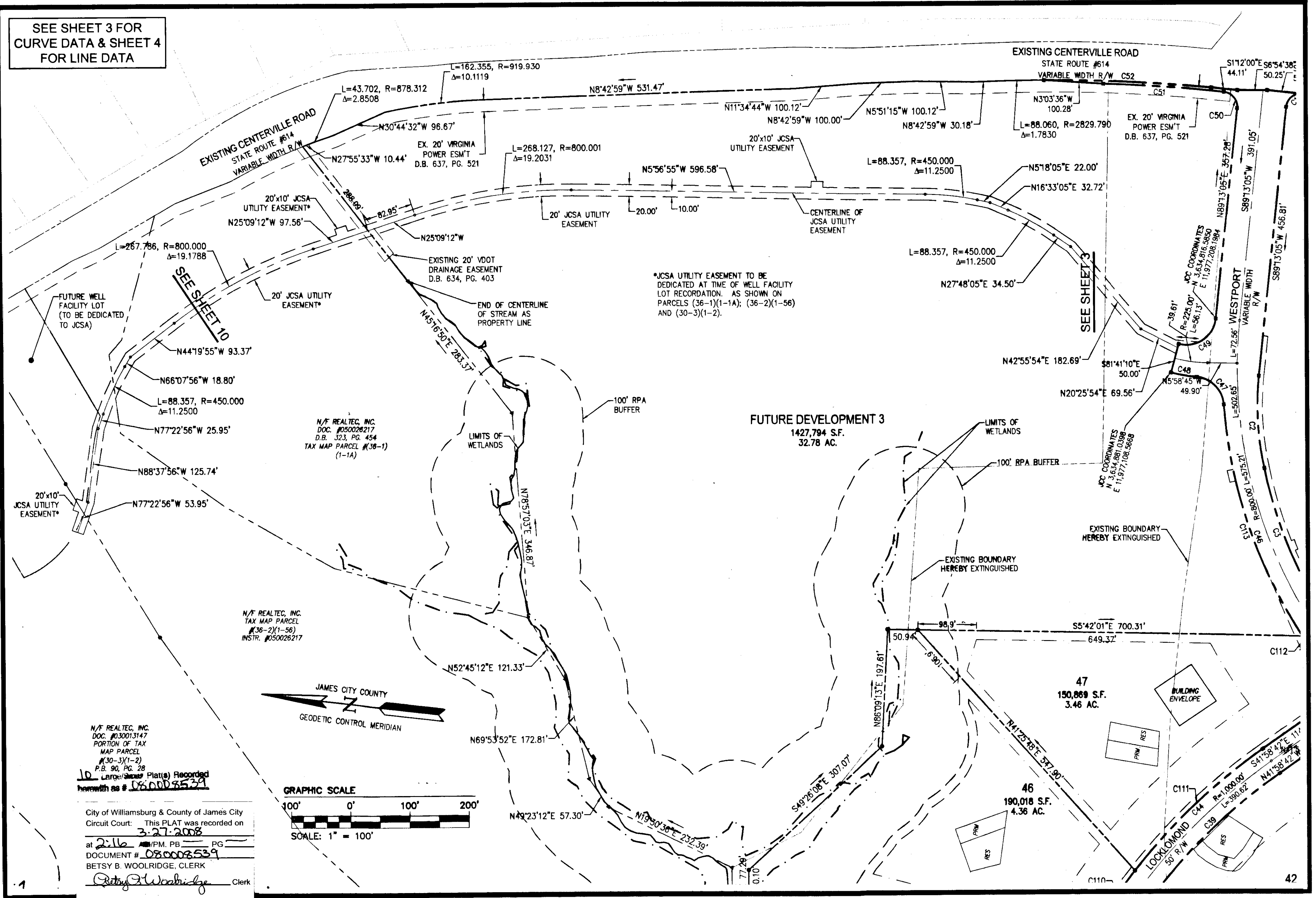


SEE SHEET 3 FOR  
CURVE DATA & SHEET 4  
FOR LINE DATA

080008539

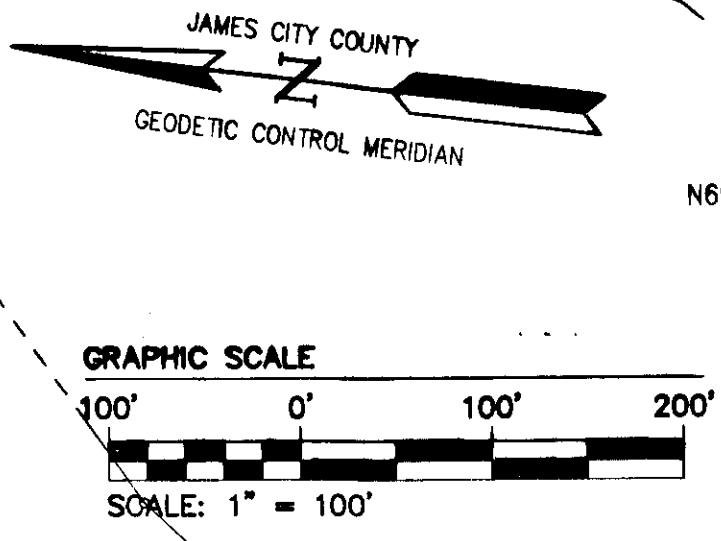


N/F REALTEC, INC.  
DOC. #030013147  
PORTION OF TAX  
MAP PARCEL  
#(30-3)(1-2)  
P.B. 90, PG. 28  
10 Large/Small Plat(s) Recorded  
herewith as # 080008539

N/F REALTEC, INC.  
TAX MAP PARCEL  
#(36-2)(1-56)  
INSTR. #050026217

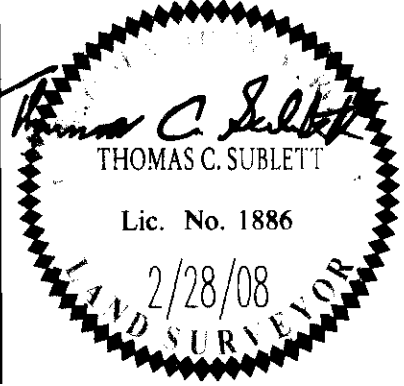
N/F REALTEC, INC.  
DOC. #050026217  
D.B. 323, PG. 454  
TAX MAP PARCEL # (38-1)  
(1-1A)

City of Williamsburg & County of James City  
Circuit Court: This PLAT was recorded on  
3-27-2008  
at 2:16 P.M. PG. 1  
DOCUMENT # 080008539  
BETSY B. WOOLRIDGE, CLERK  
*Betsy B. Woolridge* Clerk



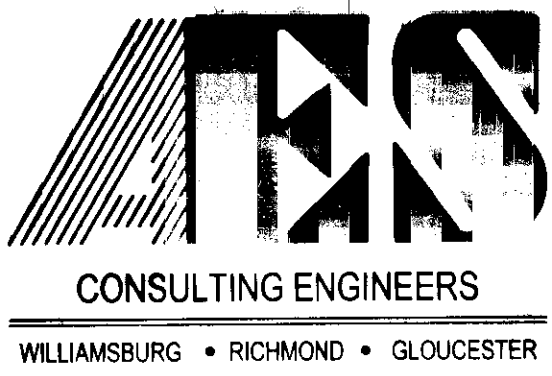
\*JCSA UTILITY EASEMENT TO BE  
DEDICATED AT TIME OF WELL FACILITY  
LOT RECORDATION, AS SHOWN ON  
PARCELS (36-1)(1-1A); (36-2)(1-56)  
AND (30-3)(1-2).

PLAT OF SUBDIVISION  
LOTS 5 - 22; 25 - 47, SECTION XXXV  
**FORD'S COLONY  
WILLIAMSBURG**  
POWHATAN DISTRICT    JAMES CITY COUNTY    VIRGINIA



No.	DATE	REVISION / COMMENT / NOTE	REVISED BY	REVIEWED BY
4	2/28/08	REVISED PER COUNTY COMMENTS	JAG	AMR
3	2/15/08	REVISED PER COUNTY COMMENTS	JAG	GVC
2	8/9/07	REVISED PER COUNTY COMMENTS	JAG	AWT
1	1/24/07	REVISED PER COUNTY COMMENTS	JAG	AWT

Designed <b>JAG</b>	Drawn <b>AES</b>
Scale <b>1"=100'</b>	Date <b>3/5/08</b>
Project No. <b>5652-21</b>	
Drawing No. <b>9 of 10</b>	



5248 Olde Towne Road, Suite 1  
Williamsburg, Virginia 23188  
(757) 253-0040  
Fax (757) 220-8994