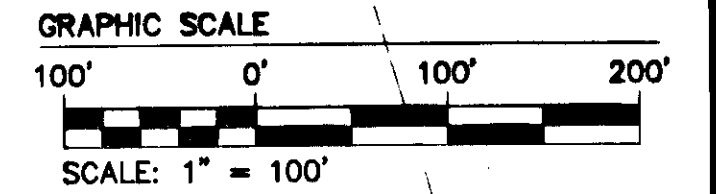


SEE SHEET 3 FOR  
CURVE DATA & SHEET 4  
FOR LINE DATA

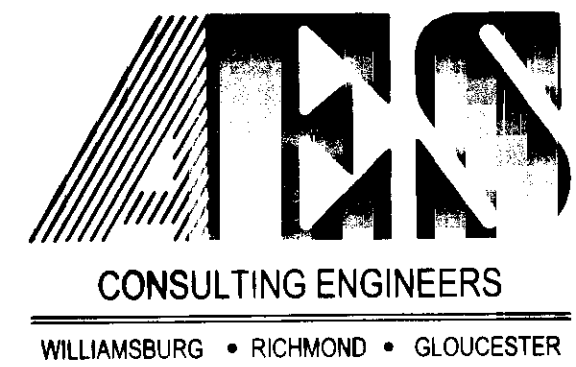
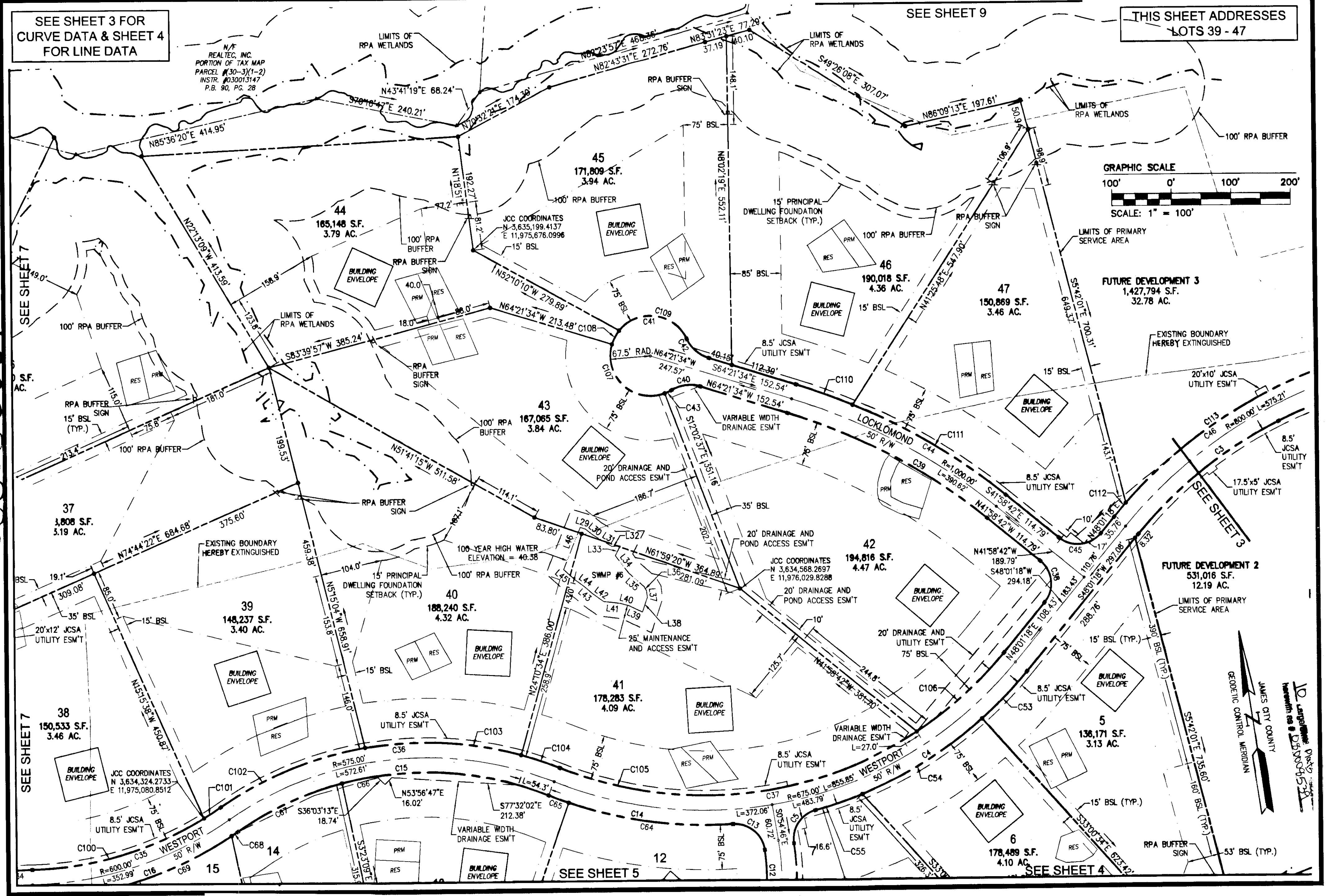
SEE SHEET 9

THIS SHEET ADDRESSES  
LOTS 39 - 47

N/F  
REALTEC, INC.  
PORTION OF TAX MAP  
PARCEL #30-3(1-2)  
INSTR. #030013147  
P.B. 90, PG. 28

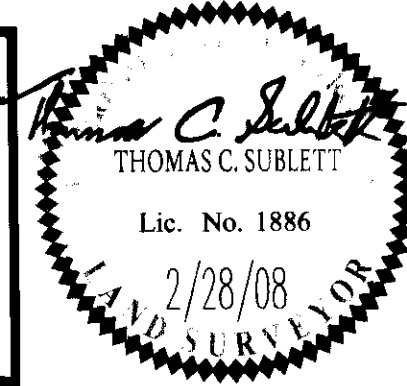


080008539



City of Williamsburg & County of James City  
Circuit Court: This PLAT was recorded on  
**3-27-2008**  
at **2:16** PM, P.B. **PG**  
DOCUMENT # **080008539**  
BETSY B. WOOLRIDGE, CLERK  
*Betsy B. Woolridge* Clerk

PLAT OF SUBDIVISION  
LOTS 5 - 22; 25 - 47, SECTION XXXV  
**FORD'S COLONY  
WILLIAMSBURG**  
POWhatan DISTRICT    JAMES CITY COUNTY    VIRGINIA



No.	DATE	REVISION / COMMENT / NOTE	REVIEWED BY	DATE
4	2/28/08	REVISED PER COUNTY COMMENTS	JAG	AMR
3	2/15/08	REVISED PER COUNTY COMMENTS	JAG	GVC
2	8/9/07	REVISED PER COUNTY COMMENTS	JAG	AWT
1	1/24/07	REVISED PER COUNTY COMMENTS	JAG	AWT

Designed	JAG	Drawn	AES
Scale	1"=100'	Date	3/5/08
Project No.	5652-21		
Drawing No.	8 of 10		