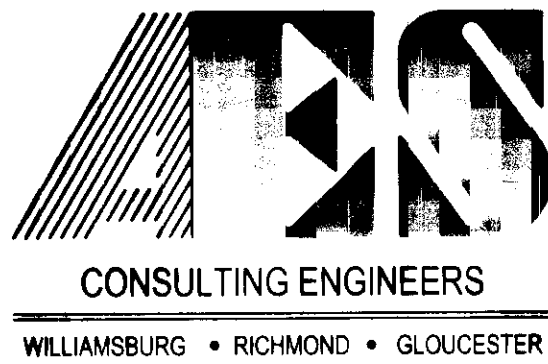
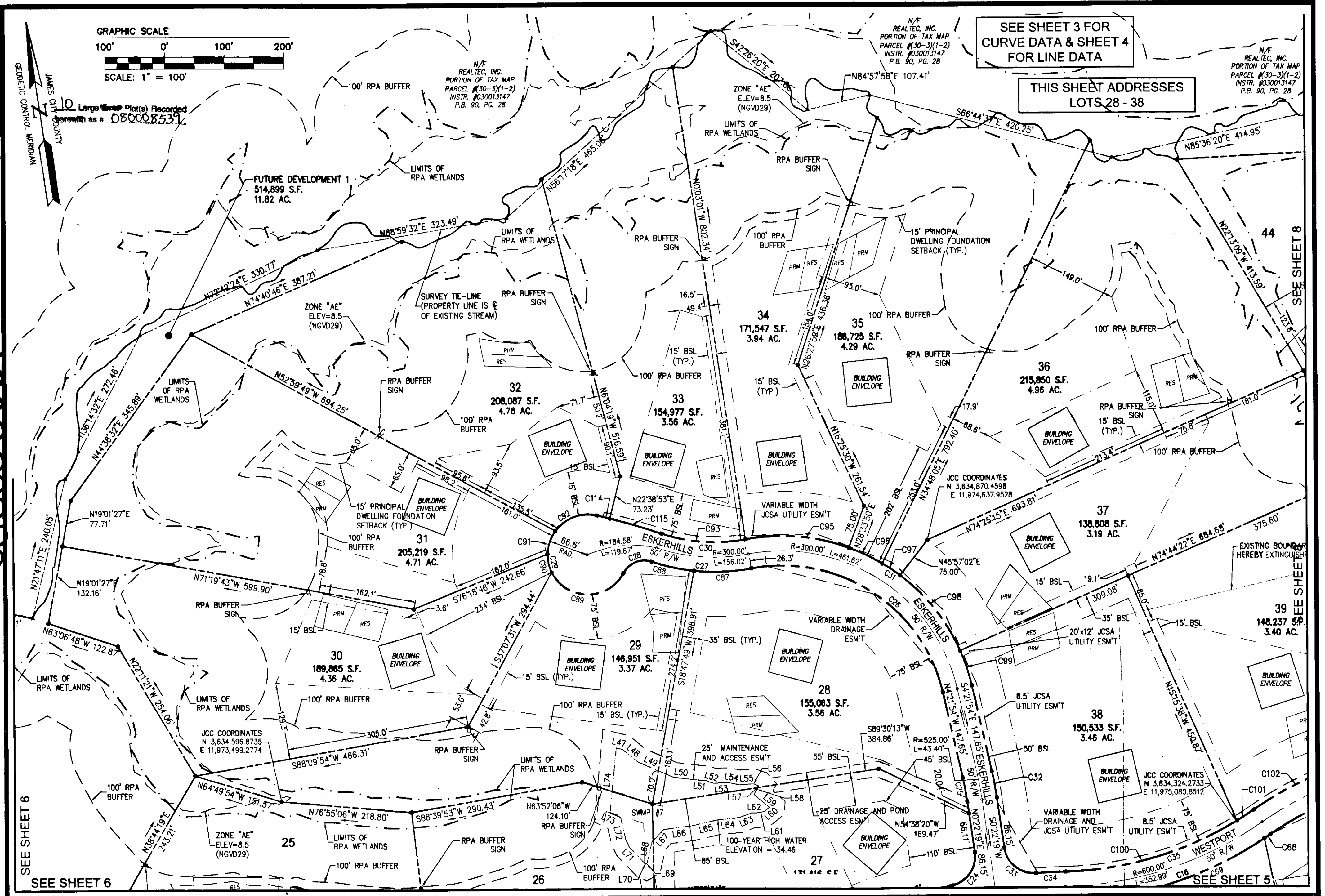


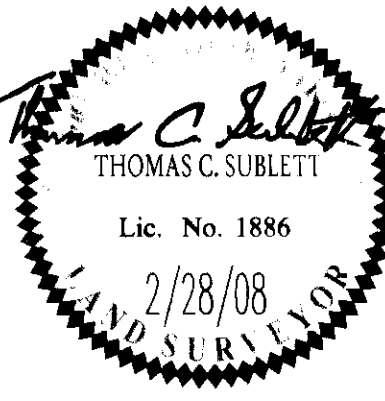
080008539



City of Williamsburg & County of James City
Circuit Court: This PLAT was recorded on
3-27-2008
at **2:16** P.M. P.B. PG. **3**
DOCUMENT # **080008539**
BETSY B. WOOLRIDGE, CLERK
Betsy B. Woolridge Clerk

PLAT OF SUBDIVISION
LOTS 5 - 22; 25 - 47, SECTION XXXV
FORD'S COLONY
WILLIAMSBURG

POWhatan DISTRICT JAMES CITY COUNTY VIRGINIA



| No. | DATE | REVISION / COMMENT / NOTE | REVIEWED BY | BY |
|-----|---------|-----------------------------|-------------|-----|
| 4 | 2/28/08 | REVISED PER COUNTY COMMENTS | JAG | AMR |
| 3 | 2/15/08 | REVISED PER COUNTY COMMENTS | JAG | GVC |
| 2 | 8/9/07 | REVISED PER COUNTY COMMENTS | JAG | AWT |
| 1 | 1/24/07 | REVISED PER COUNTY COMMENTS | JAG | AWT |

| | |
|-------------------------------|-----------------------|
| Designed JAG | Drawn AES |
| Scale 1"=100' | Date 3/5/08 |
| Project No. 5652-21 | |
| Drawing No. 7 of 10 | |