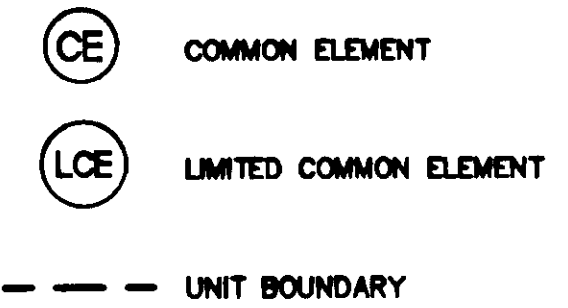
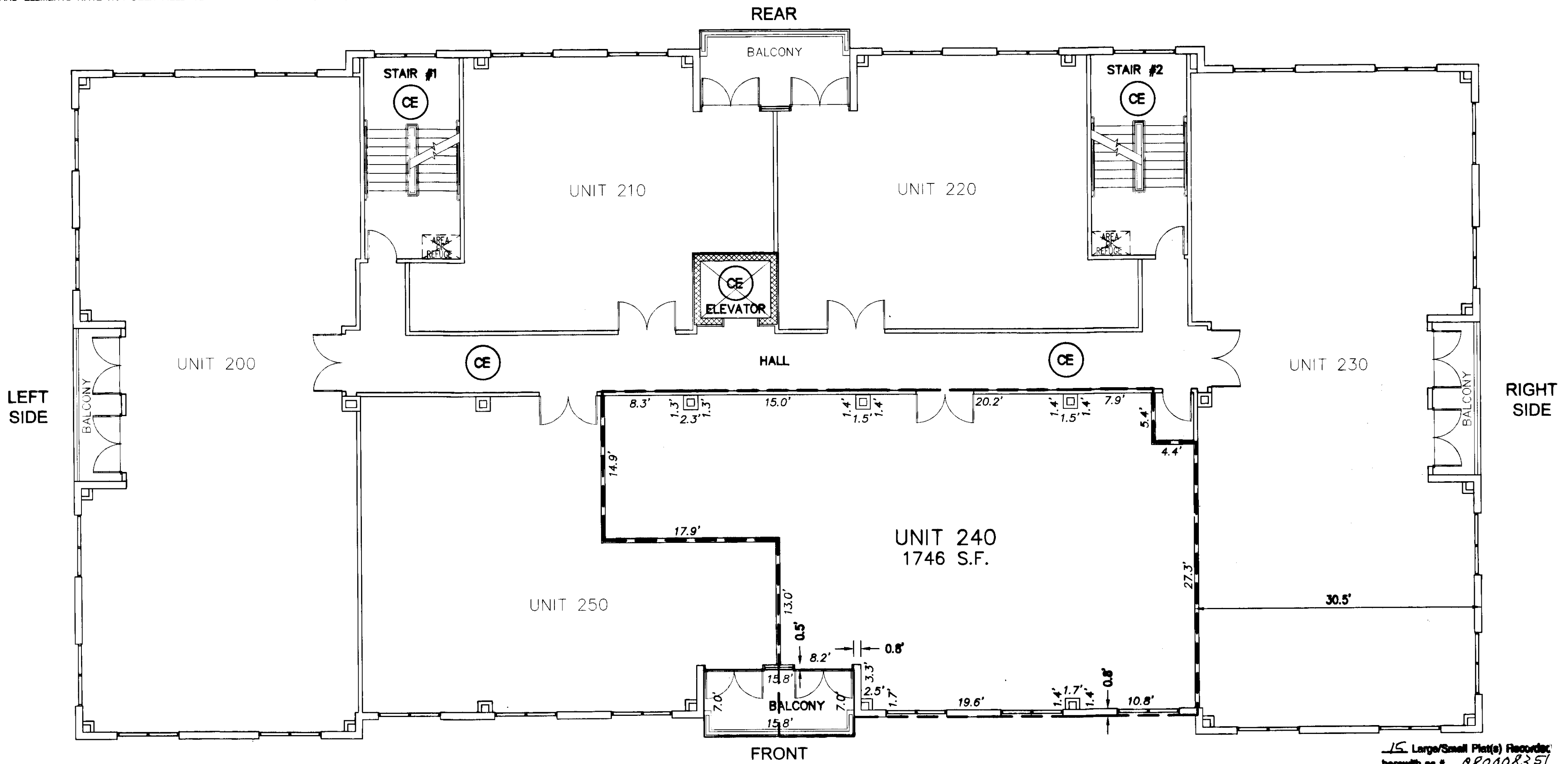


NOTES:

1. COMMON ELEMENTS, LIMITED COMMON ELEMENTS AND UNITS ARE SUBSTANTIALLY COMPLETE.
2. ALL BUILDING FLOOR PLANS AND DETAILS SHOWN ARE PER ARCHITECTURAL PLANS PROVIDED TO AES CONSULTING ENGINEERS BY THE DEVELOPER.
3. THE LOWER (HORIZONTAL) BOUNDARY OF EACH UNIT AS SHOWN IN THE PLAN IS THE HORIZONTAL PLANE OF THE UPPER SURFACE OF THE CONCRETE FLOOR SLAB.
4. THE UPPER (HORIZONTAL) BOUNDARY IS THE PLANE OF THE LOWER SURFACE OF THE SUSPENDED ACOUSTIC CEILING OF THE UNIT.
5. THE VERTICAL (SIDE) BOUNDARIES OF THE UNIT SHALL BE THE VERTICAL PLANE OF THE CENTERLINE OF THE INTERIOR WALL DIVIDING ANY TWO UNITS AND/OR THE OUTSIDE FACE OF THE EXTERIOR WALL OF THE PERIMETER UNIT, EXTENDED TO INTERSECTIONS WITH EACH OTHER AND WITH THE UPPER AND LOWER UNIT BOUNDARIES.
6. LOWER, UPPER AND SIDE BOUNDARIES ARE MORE FULLY DESCRIBED IN THE DECLARATION OF CONDOMINIUM.
7. THE INTERIOR WALLS AND ELEMENTS AS SHOWN HEREON WERE TAKEN DIRECTLY FROM ARCHITECTURAL DRAWINGS PROVIDED BY THE DEVELOPER AND ARE INTENDED FOR REFERENCE PURPOSES ONLY. INTERIOR PARTITION WALLS AND ELEMENTS HAVE NOT BEEN FIELD VERIFIED AND ARE NOT SHOWN.



080008351



15 Large/Small Plat(s) Recorded herewith as # 080008351

**SECOND FLOOR PLAN**

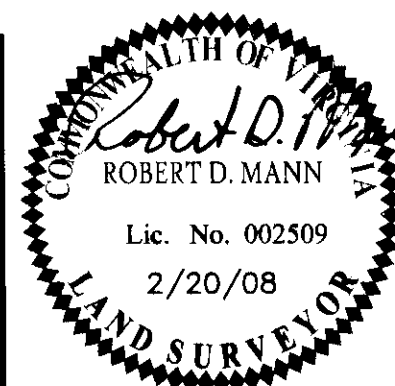
NOT TO SCALE

"EXHIBIT 2"

PLAN OF CONDOMINIUM  
**PATRIOT PARK, A CONDOMINIUM**  
PHASE 4, UNIT 240

OWNER/DEVELOPER: PATRIOT DEVELOPMENT ASSOCIATES, LLC

BERKELEY DISTRICT JAMES CITY COUNTY VIRGINIA



City of Williamsburg & County of James City  
Circuit Court: This PLAT was recorded on  
25 March 2008  
at 10:17 AM/PM, PG. 1  
DOCUMENT # 080008351  
BETSY B. WOOLRIDGE, CLERK  
Betsy B. Woolridge Clerk

No.	DATE	REVISION / COMMENT / NOTE	REVISED BY	REVIEWED BY
1	3/14/08	ADJUSTED UNIT BOUNDARY	RDM	

Designed AES	Drawn AWT
Scale NTS	Date 2/20/08
Project No. 6632-6-150	
Drawing No. 2 of 5	



CONSULTING ENGINEERS

WILLIAMSBURG • RICHMOND • GLOUCESTER • FREDERICKSBURG

5248 Olde Towne Road, Suite 1  
Williamsburg, Virginia 23188  
(757) 253-0040  
Fax (757) 220-8994