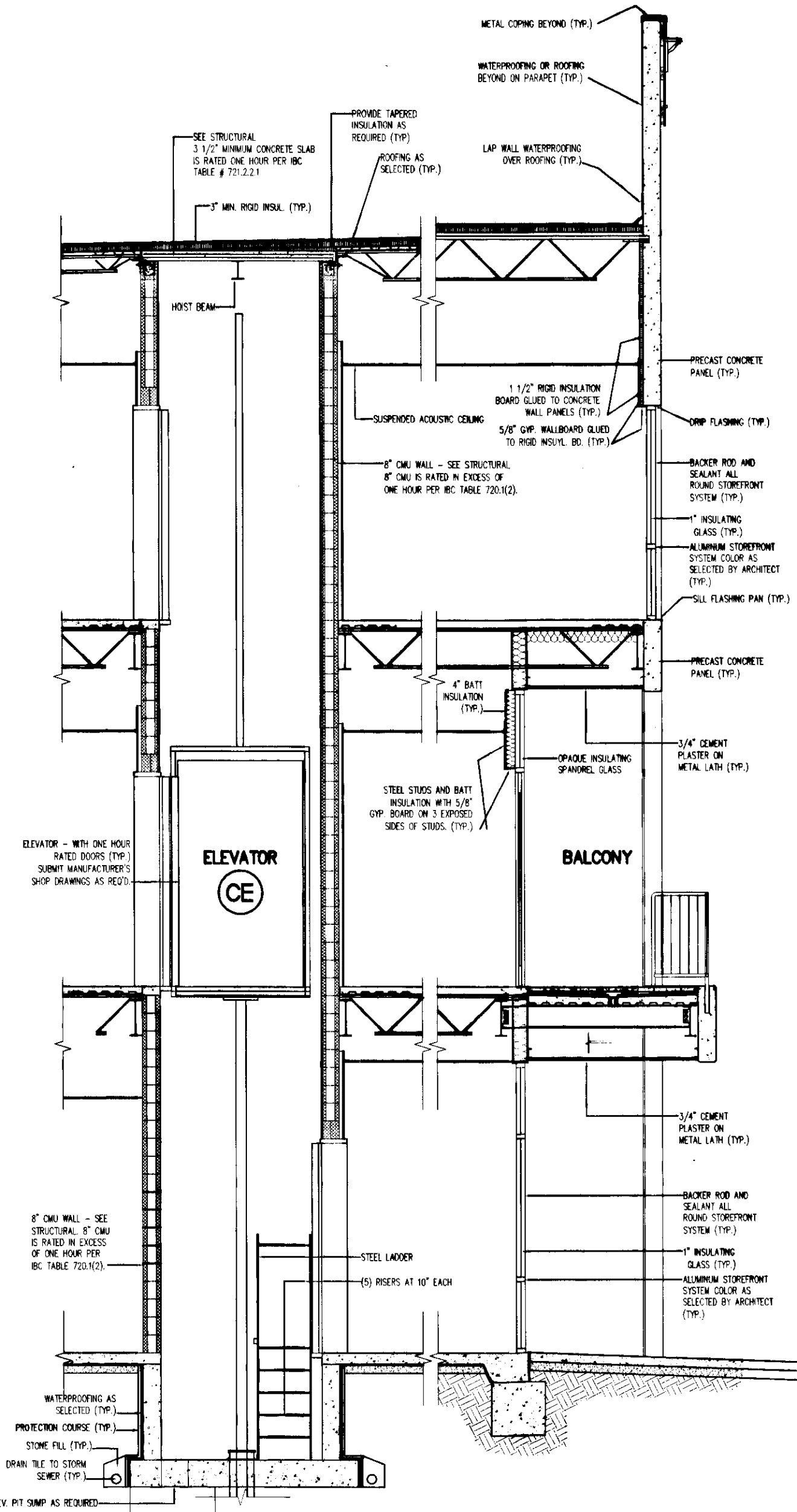
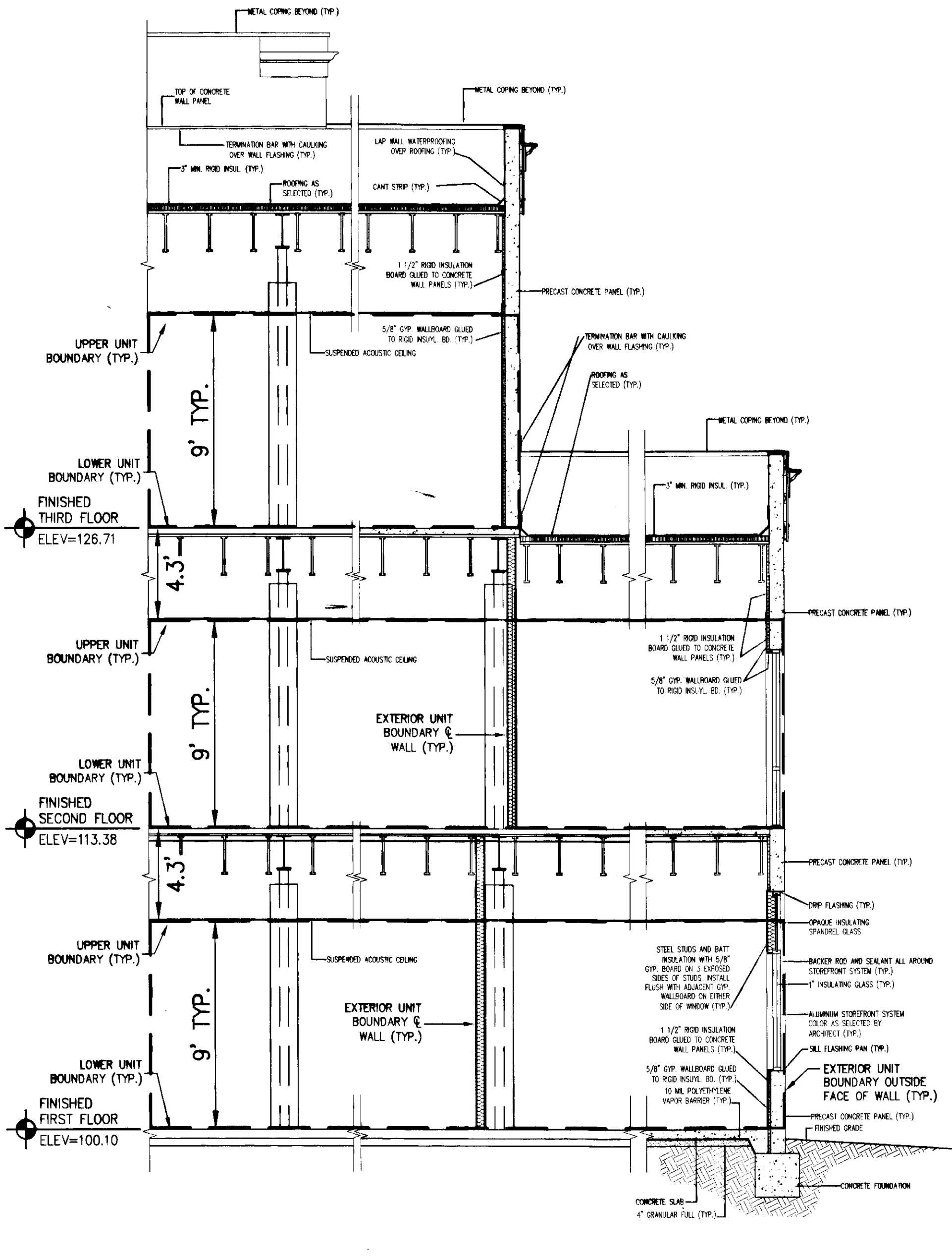


080008351

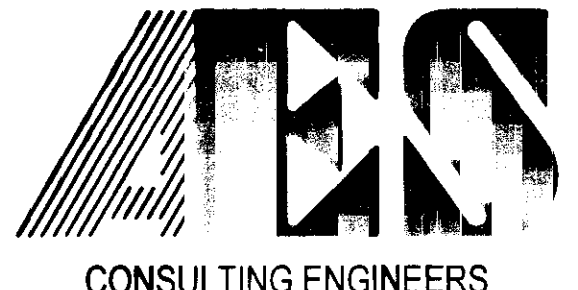


(CE) COMMON ELEMENT
 (LCE) LIMITED COMMON ELEMENT
 - - - UNIT BOUNDARY

- NOTES:
1. COMMON ELEMENTS, LIMITED COMMON ELEMENTS AND UNITS ARE SUBSTANTIALLY COMPLETE.
 2. ALL BUILDING FLOOR PLANS AND DETAILS SHOWN ARE PER ARCHITECTURAL PLANS PROVIDED TO AES CONSULTING ENGINEERS BY THE DEVELOPER.
 3. THE LOWER (HORIZONTAL) BOUNDARY OF EACH UNIT AS SHOWN IN THE PLAN IS THE HORIZONTAL PLANE OF THE UPPER SURFACE OF THE CONCRETE FLOOR SLAB.
 4. THE UPPER (HORIZONTAL) BOUNDARY IS THE PLANE OF THE LOWER SURFACE OF THE SUSPENDED ACOUSTIC CEILING OF THE UNIT.
 5. THE VERTICAL (SIDE) BOUNDARIES OF THE UNIT SHALL BE THE VERTICAL PLANE OF THE CENTERLINE OF THE INTERIOR WALL DIVIDING ANY TWO UNITS AND/OR THE OUTSIDE FACE OF THE EXTERIOR WALL OF THE PERIMETER UNIT, EXTENDED TO INTERSECTIONS WITH EACH OTHER AND WITH THE UPPER AND LOWER UNIT BOUNDARIES.
 6. LOWER, UPPER AND SIDE BOUNDARIES ARE MORE FULLY DESCRIBED IN THE DECLARATION OF CONDOMINIUM.
 7. THE INTERIOR WALLS AND ELEMENTS AS SHOWN HEREON WERE TAKEN DIRECTLY FROM ARCHITECTURAL DRAWINGS PROVIDED BY THE DEVELOPER AND ARE INTENDED FOR REFERENCE PURPOSES ONLY. INTERIOR PARTITION WALLS AND ELEMENTS HAVE NOT BEEN FIELD VERIFIED AND ARE NOT SHOWN.

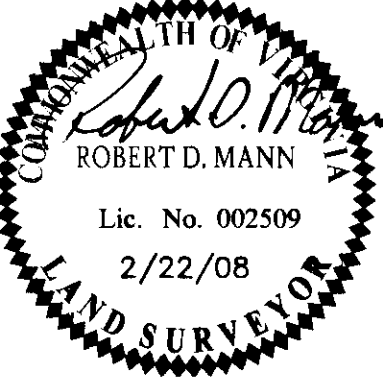
15 Large (Small Plate) Records
 Record # 080008351

TYPICAL BUILDING SECTION
 NOT TO SCALE



5248 Olde Towne Road, Suite 1
 Williamsburg, Virginia 23188
 (757) 253-0040
 Fax (757) 220-8994

"EXHIBIT 1"
 PLAN OF CONDOMINIUM
PATRIOT PARK, A CONDOMINIUM
 PHASE 3, UNIT 230
 OWNER/DEVELOPER: PATRIOT DEVELOPMENT ASSOCIATES, LLC
 BERKELEY DISTRICT JAMES CITY COUNTY VIRGINIA



City of Williamsburg & County of James City		Circuit Court	
This PLAT was recorded on		25 March 2008	
at 10:17 AM/PM: PB		PG	
DOCUMENT #		080008351	
BETSY B. WOOLRIDGE, CLERK		Clerk	
3/14/08		REMOVED LCE LABEL FROM BALCONY	
No.	DATE	REVISION / COMMENT / NOTE	REVIEWED BY

Designed	Drawn
AES	AWT
Scale	Date
NTS	2/22/08
Project No.	
6632-6-15D	
Drawing No.	
5 of 5	

WILLIAMSBURG • RICHMOND • GLOUCESTER • FREDERICKSBURG