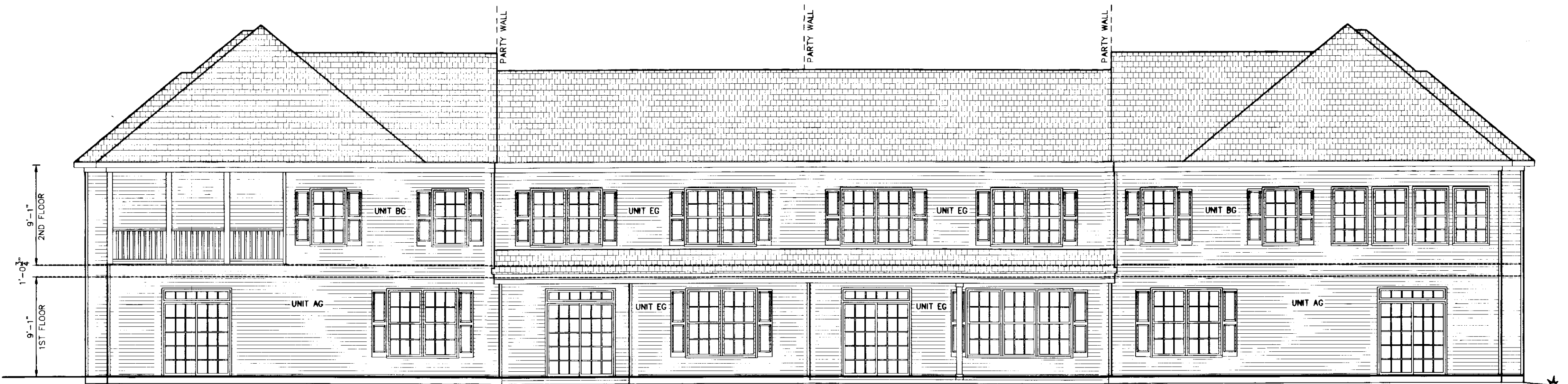


080008347



ELEVATION C



ELEVATION D

**NOTE:**  
BUILDING DIMENSIONS AND ELEVATIONS SHOWN ARE BASED  
ARCHITECTURAL PLANS PREPARED BY SIMMONS ENGINEERING.  
DIMENSIONS SHOWN ARE TO THE BUILDING FRAMING LINE.

**SURVEYORS CERTIFICATE**

I HEREBY CERTIFY THAT TO THE BEST OF MY KNOWLEDGE OR BELIEF,  
THIS PLAT IS ACCURATE AND COMPLIES WITH THE PROVISIONS OF  
SECTION 55-79.58 (B) OF THE CODE OF VIRGINIA 1950 AS  
AMENDED AND THAT ALL UNITS DEPICTED HEREON HAVE BEEN  
SUBSTANTIALLY COMPLETED.

*Ch. A. Calhoun*  
STATE CERTIFIED LAND SURVEYOR

*3/18/08*  
DATE



Le. Large (with Plate) Recorded  
080008347

City of Williamsburg & County of James City  
Circuit Court: This PLAT was recorded on  
*25 March 2008*  
at *9:27* AM/PM, PB *—* PG *—*  
DOCUMENT # *080008347*  
BETSY B. WOOLRIDGE, CLERK  
*Betsy B. Woolridge* Clerk

PLAN OF  
6 UNIT BUILDING  
**BRAEMAR CREEK**  
AT GREENSPRINGS PLANTATION  
A CONDOMINIUM  
LOCATED IN THE BERKELEY DISTRICT  
JAMES CITY COUNTY, VIRGINIA

DATE: 3/18/08 SCALE: N/A JOB# 05-548

SHEET 6 OF 6

**LandTech**  
Resources, Inc.  
Surveying • Engineering • GPS  
201-A-Bulifants Blvd., Williamsburg, VA 23188  
Phone: (757) 565-1677 Fax: (757) 565-0782  
web: landtechresources.com