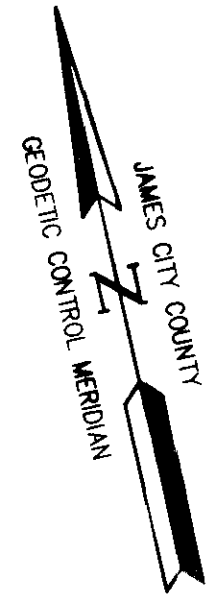
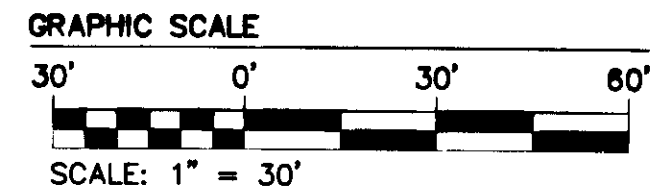


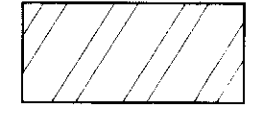
080007658



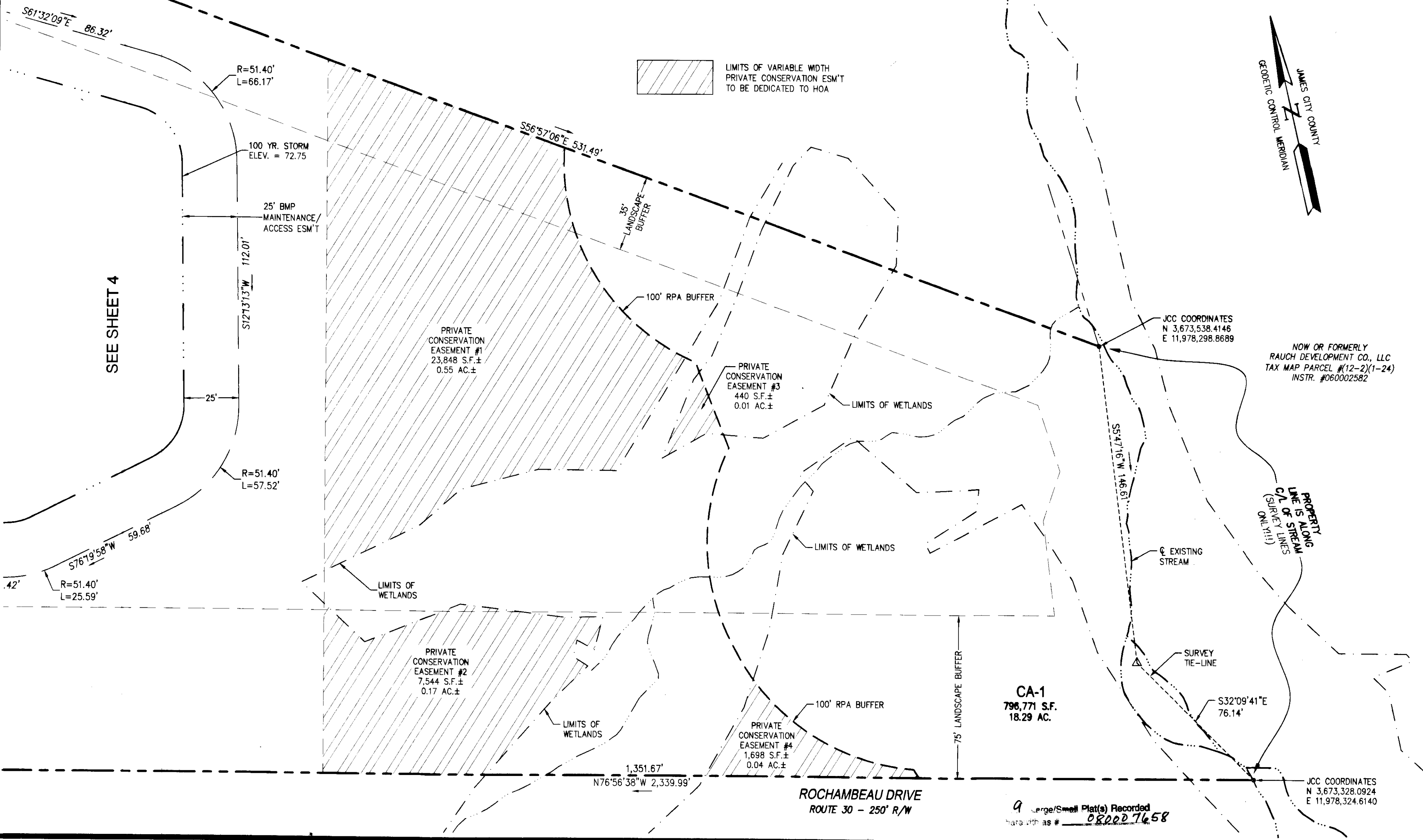
NOW OR FORMERLY  
ROBERT A. SHELDON  
TAX MAP PARCEL # (12-2)(1-13)  
D.B. 798, PG. 850

SEE SHEET  
6

SEE SHEET 4



LIMITS OF VARIABLE WIDTH  
PRIVATE CONSERVATION ESM'T  
TO BE DEDICATED TO HOA



NOW OR FORMERLY  
RAUCH DEVELOPMENT CO., LLC  
TAX MAP PARCEL # (12-2)(1-24)  
INSTR. #060002582

PROPERTY  
LINE IS ALONG  
C.A. OF STREAM  
(SURVEY LINES  
ON 11/11)

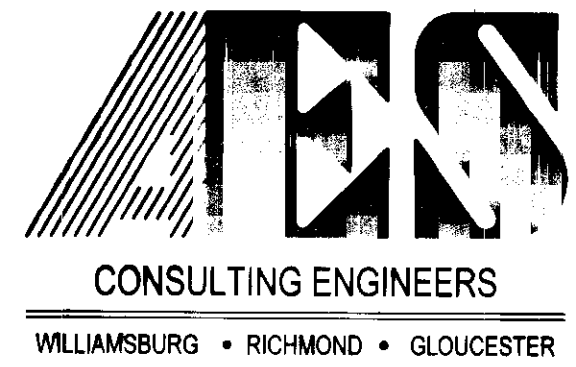
CA-1  
796,771 S.F.  
18.29 AC.

ROCHAMBEAU DRIVE  
ROUTE 30 - 250' R/W

Large/Small Plat(s) Recorded  
here with as # 080007658

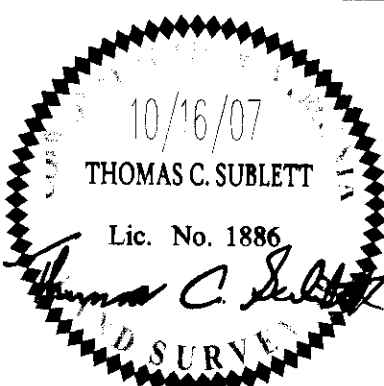
JCC COORDINATES  
N 3,673,328.0924  
E 11,978,324.6140

S:\Jobs\04048\10-Ph1-Townhome-Rochambeau.dwg (Sun\Plat\0404810 SUBD SH 5.dwg, 2/22/2008 11:02:35 AM, Plotter XP7 7000.pcl)



5248 Olde Towne Road, Suite 1  
Williamsburg, Virginia 23188  
(757) 253-0040  
Fax (757) 220-8994

PLAT OF SUBDIVISION  
**WHITE HALL**  
SECTION 1, PHASE A  
OWNER: RAUCH DEVELOPMENT CO., L.L.C.  
STONEHOUSE DISTRICT JAMES CITY COUNTY VIRGINIA



City of Williamsburg & County of James City Circuit Court: This PLAT was recorded on 14 March 2008 at 10:20 AM/PM; PB = PG = DOCUMENT # 080007658 BETSY B. WOOLRIDGE, CLERK <i>Betsy B. Woolridge</i> Clerk			
1	2/11/08	AWT	TCS
No.	DATE	REVISION / COMMENT / NOTE	REVISOR BY

Designed ABS	Drawn AWT
Scale 1"=30'	Date 10/16/07
Project No. 9048-10	
Drawing No. 5 of 9	