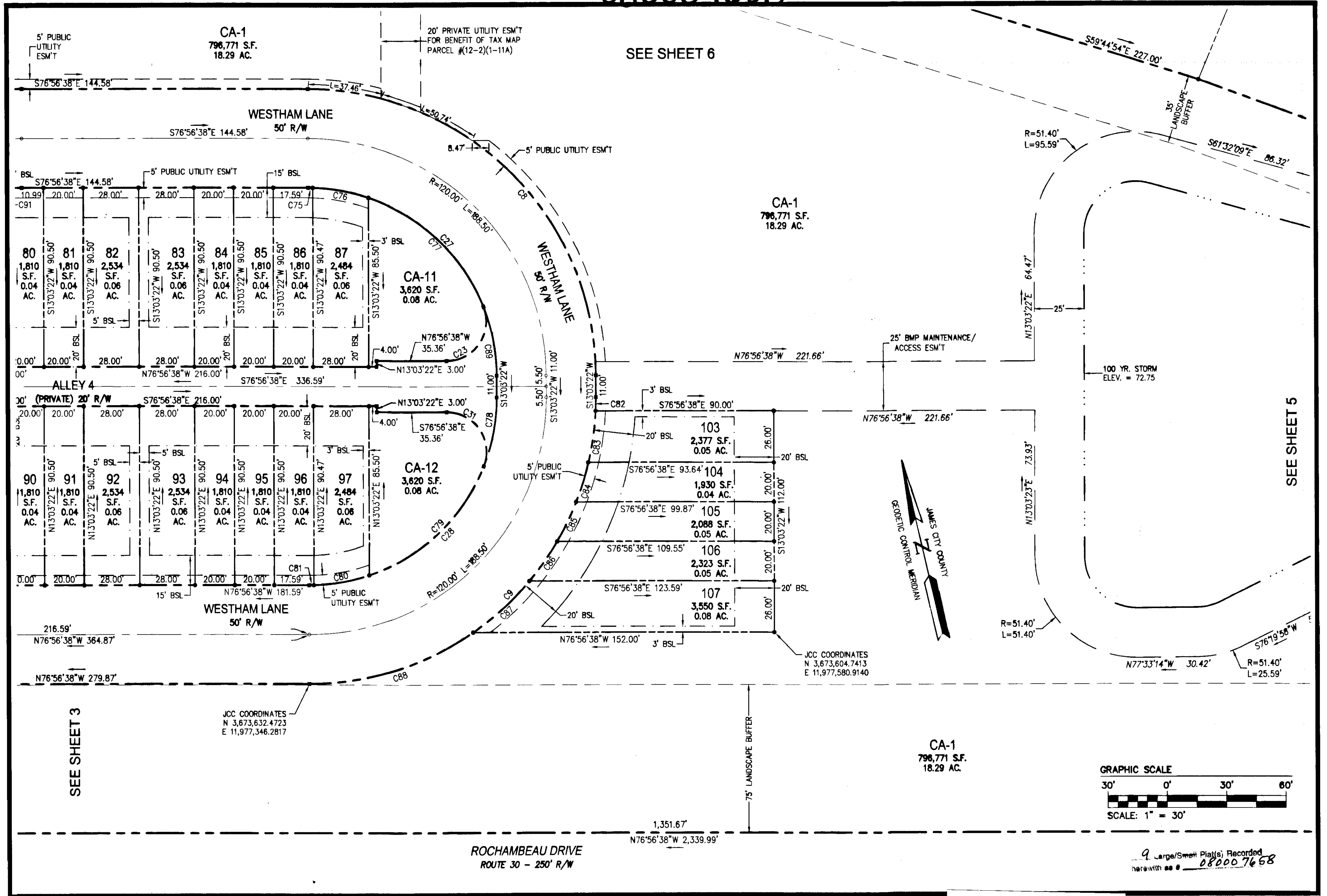
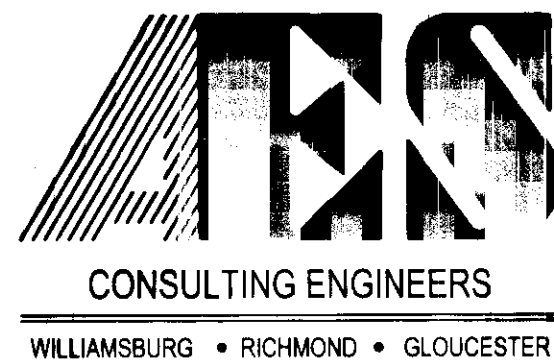


080007658

SEE SHEET 6



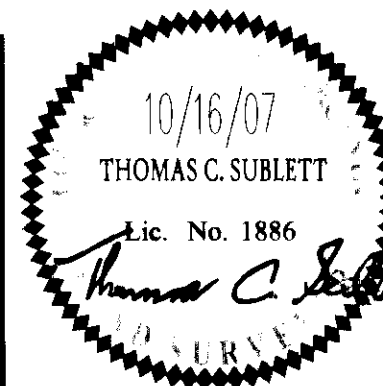
S:\Jobs\9048\10-Ph1-Townhome-Rochambeau.dwg (Surf)Plat1904810 SUBD SH 4.dwg, 3/7/2008 11:06:20 AM, aaron.mml



5248 Olde Towne Road, Suite 1
Williamsburg, Virginia 23188
(757) 253-0040
Fax (757) 220-8994

PLAT OF SUBDIVISION
WHITE HALL
SECTION 1, PHASE A
OWNER: RAUCH DEVELOPMENT CO., L.L.C.

STONEHOUSE DISTRICT JAMES CITY COUNTY VIRGINIA



City of Williamsburg & County of James City Circuit Court. This PLAT was recorded on 14 March 2008 at 10:20 AM/PM; PB PG DOCUMENT # 080007658 Betsy B. Woolridge, CLERK			
1 2/11/08		AWT	TCS
No.	DATE	REVISION / COMMENT / NOTE	REVISION BY

Designed ABS	Drawn AWT
Scale 1"=30'	Date 10/16/07
Project No. 9048-10	
Drawing No. 4 of 9	