

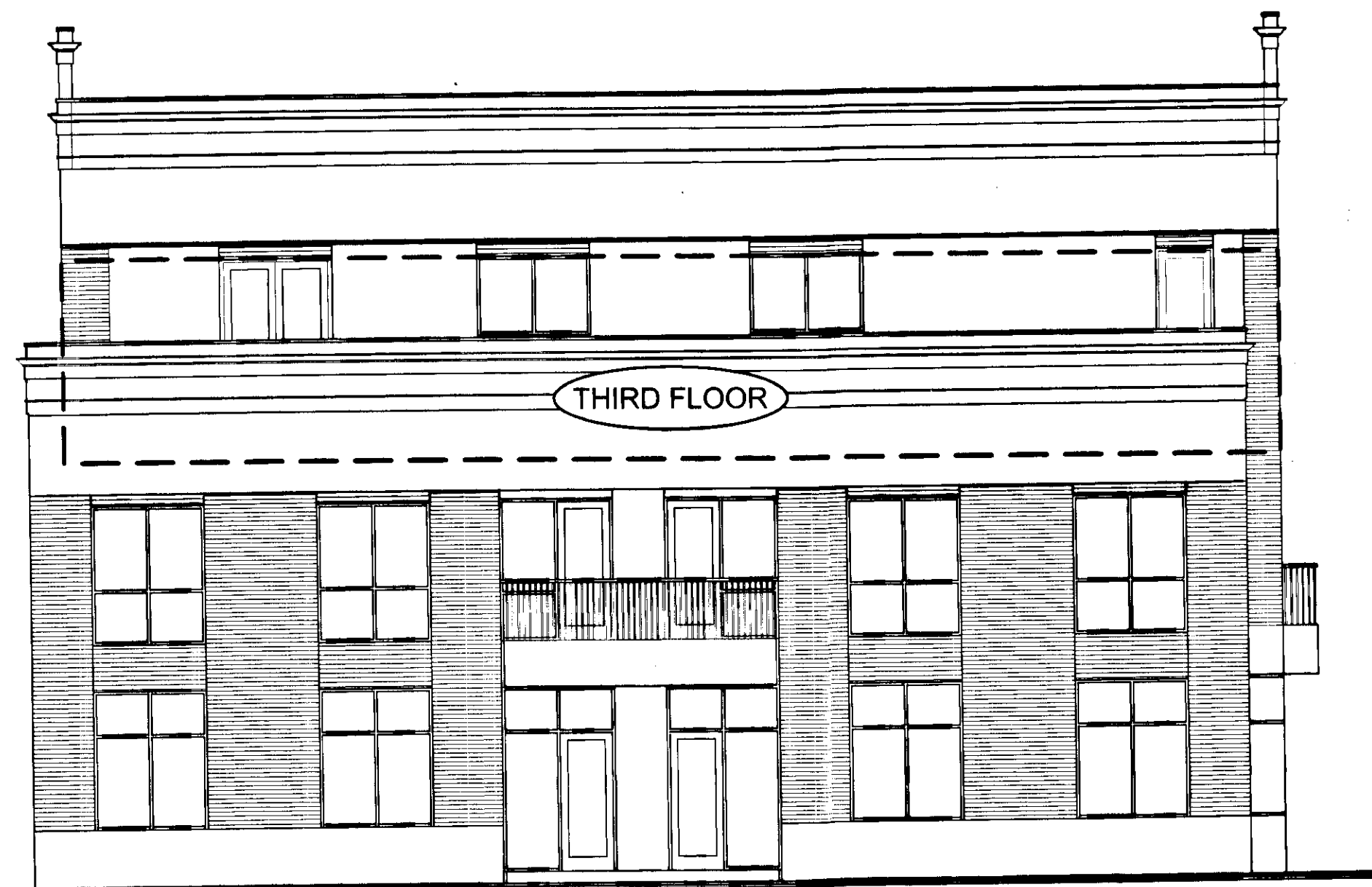
080007600

(CE) COMMON ELEMENT
 (LCE) LIMITED COMMON ELEMENT
 --- UNIT BOUNDARY



REAR ELEVATION (PARKING LOT)

NOT TO SCALE



RIGHT SIDE ELEVATION

NOT TO SCALE

5 Large/Small Plat(s) Recorded
 with as # 080007600

NOTES:

1. COMMON ELEMENTS, LIMITED COMMON ELEMENTS AND UNITS ARE SUBSTANTIALLY COMPLETE.
2. ALL BUILDING FLOOR PLANS AND DETAILS SHOWN ARE PER ARCHITECTURAL PLANS PROVIDED TO AES CONSULTING ENGINEERS BY THE DEVELOPER.
3. THE LOWER (HORIZONTAL) BOUNDARY OF EACH UNIT AS SHOWN IN THE PLAN IS THE HORIZONTAL PLANE OF THE UPPER SURFACE OF THE CONCRETE FLOOR SLAB.
4. THE UPPER (HORIZONTAL) BOUNDARY IS THE PLANE OF THE LOWER SURFACE OF THE SUSPENDED ACOUSTIC CEILING OF THE UNIT.
5. THE VERTICAL (SIDE) BOUNDARIES OF THE UNIT SHALL BE THE VERTICAL PLANE OF THE CENTERLINE OF THE INTERIOR WALL DIVIDING ANY TWO UNITS AND/OR THE OUTSIDE FACE OF THE EXTERIOR WALL OF THE PERIMETER UNIT, EXTENDED TO INTERSECTIONS WITH EACH OTHER AND WITH THE UPPER AND LOWER UNIT BOUNDARIES.
6. LOWER, UPPER AND SIDE BOUNDARIES ARE MORE FULLY DESCRIBED IN THE DECLARATION OF CONDOMINIUM.
7. THE INTERIOR WALLS AND ELEMENTS AS SHOWN HEREON WERE TAKEN DIRECTLY FROM ARCHITECTURAL DRAWINGS PROVIDED BY THE DEVELOPER AND ARE INTENDED FOR REFERENCE PURPOSES ONLY. INTERIOR PARTITION WALLS AND ELEMENTS HAVE NOT BEEN FIELD VERIFIED AND ARE NOT SHOWN.

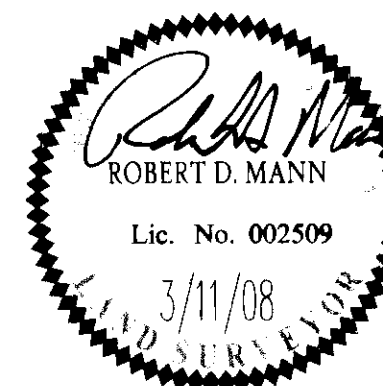
"EXHIBIT 1"



CONSULTING ENGINEERS
 WILLIAMSBURG • RICHMOND • GLOUCESTER

5248 Olde Towne Road, Suite 1
 Williamsburg, Virginia 23188
 (757) 253-0040
 Fax (757) 220-8994

PLAN OF CONDOMINIUM
PATRIOT PARK, A CONDOMINIUM
PHASE 2, THIRD FLOOR
 OWNER/DEVELOPER: PATRIOT DEVELOPMENT ASSOCIATES, LLC
 BERKELEY DISTRICT JAMES CITY COUNTY VIRGINIA



No.	DATE	REVISION / COMMENT / NOTE	BY

City of Williamsburg & County of James City
 Circuit Court. This PLAT was recorded on
 13 March 2008
 at 12:18 AM/PM, PG. 1
 DOCUMENT # 080007600
 BETSY B. WOOLRIDGE, CLERK
 Betsy B. Woolridge Clerk

Designed AES	Drawn AWT
Scale NTS	Date 3/11/08
Project No. 6632-6-150	
Drawing No. 4 of 5	