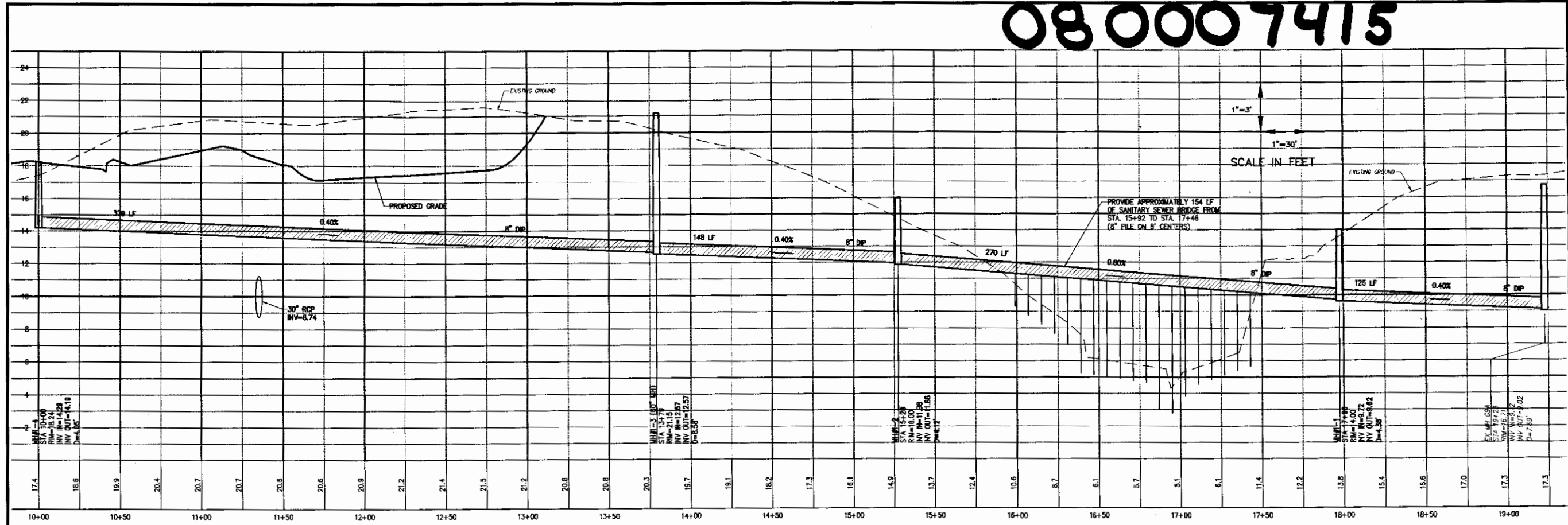
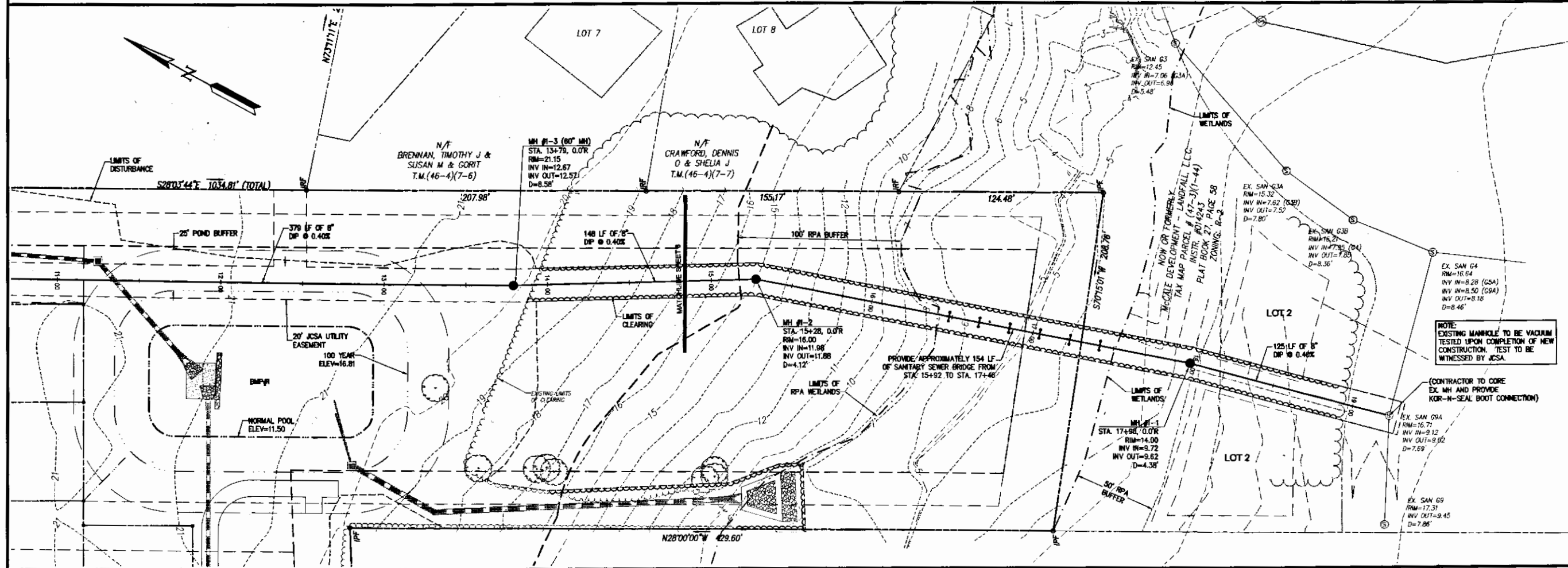


080007415



CROSS COUNTRY SANITARY SEWER



| No. | DATE | REVISION / COMMENT / NOTE |
|-----|----------|--|
| 4 | 11/28/07 | REVISED PER DODT & JCSA COMMENTS NOV 2007 |
| 3 | 10/29/07 | REVISED PER COMMENTS RECEIVED JULY-AUGUST 2007 |
| 2 | 8/28/07 | REVISED PER COMMENTS RECEIVED MAY-JUNE 2007 |
| 1 | 5/1/07 | REVISED PER COUNTY COMMENTS RECEIVED 3/07 |



5248 Old Towne Road, Suite 1
 Williamsburg, Virginia 23188
 (757) 255-0040
 Fax (757) 220-8884



SEWER PLAN & PROFILE
 MASON PARK SUBDIVISION
 JAMES CITY COUNTY, VIRGINIA

| | |
|------------------------|-----------------|
| Designed JAC | Drawn MJR |
| Scale 1" = 30' | Date 2/19/07 |
| Project No. 9676-02 | |
| Drawing No. 13 | |

City of Williamsburg & County of James City
 Circuit Court: This PLAT was recorded on
 11 March 2008
 at 10:58 AM/PM PG 8
 DOCUMENT # 080007415
 Betsy B. Woolridge, CLERK
 Clerk