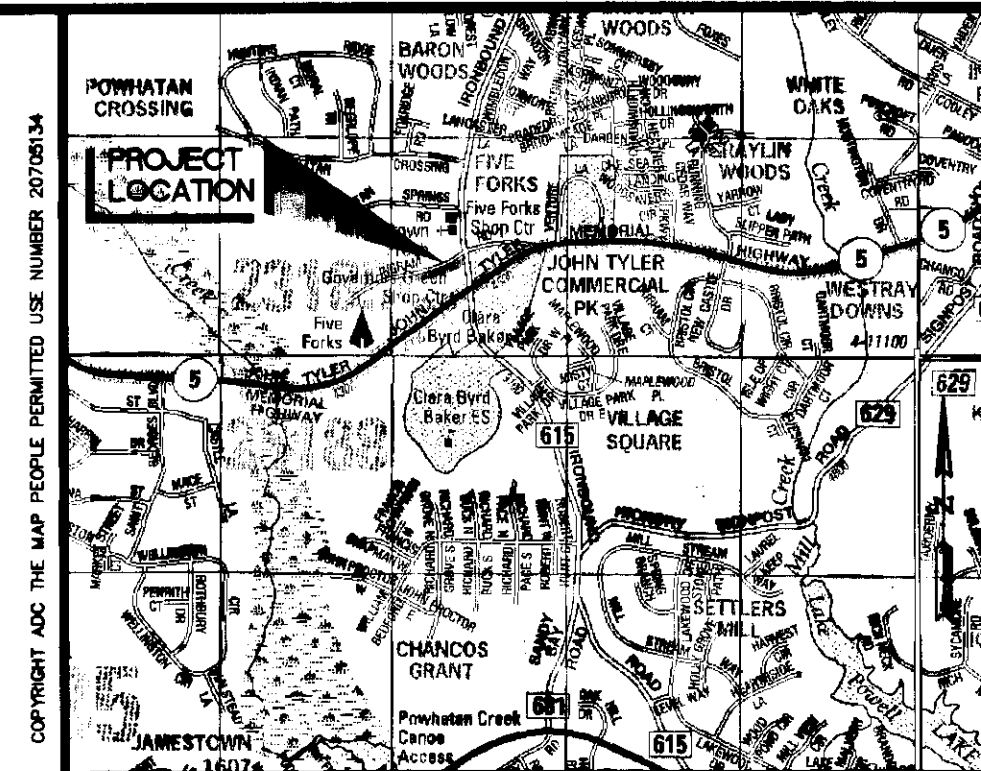
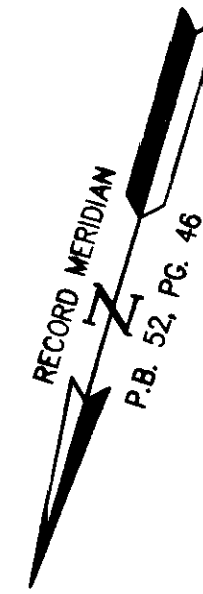
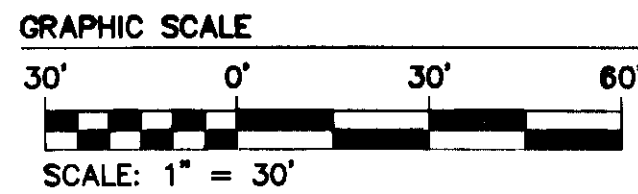


080006754

GENERAL NOTES

- THIS PLAT IS INTENDED FOR EASEMENT PURPOSES ONLY. PROPERTY LINES AS SHOWN WERE TAKEN FROM RECORD AND OTHER AVAILABLE INFORMATION AND DO NOT REPRESENT AN ACTUAL FIELD BOUNDARY SURVEY. THERE MAY BE EASEMENTS AND OTHER COVENANTS OF RECORD OTHER THAN SHOWN WHICH MAY AFFECT THIS PROPERTY. THIS PLAT WAS PREPARED WITHOUT THE BENEFIT OF A CURRENT TITLE REPORT.
- UTILITY EASEMENTS DENOTED AS "JCSA UTILITY EASEMENTS" ARE FOR THE EXCLUSIVE USE OF THE JCSA AND THE PROPERTY OWNER. OTHER UTILITY SERVICE PROVIDERS DESIRING TO USE THESE EASEMENTS WITH THE EXCEPTION OF PERPENDICULAR UTILITY CROSSINGS MUST OBTAIN AUTHORIZATION FOR ACCESS AND USE FROM THE JCSA AND THE PROPERTY OWNER. ADDITIONALLY, JCSA SHALL NOT BE HELD RESPONSIBLE FOR ANY DAMAGE TO IMPROVEMENTS WITHIN THIS EASEMENT, FROM ANY CAUSE.



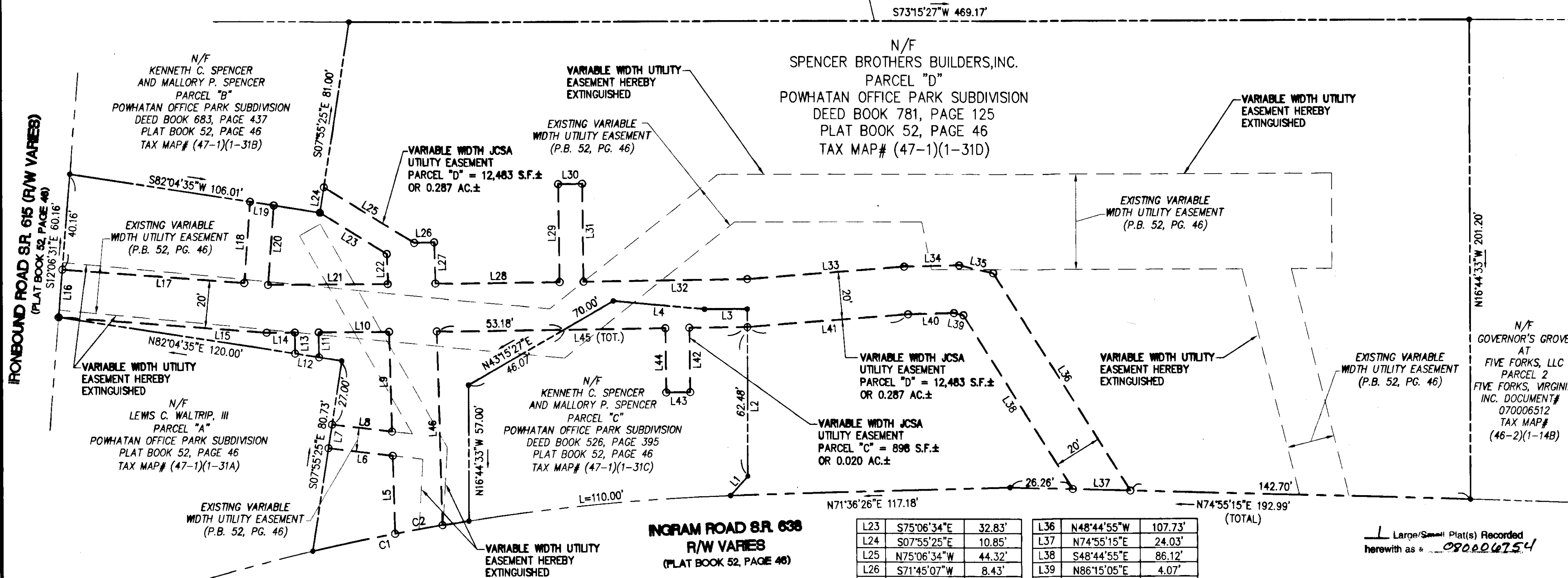
VARIABLE WIDTH JCSA UTILITY EASEMENT AREA TABLE

PARCEL "C" = 898 S.F.± OR 0.020 AC.±
 PARCEL "D" = 12,483 S.F.± OR 0.287 AC.±
 TOTAL AREA = 13,381 S.F.± OR 0.307 AC.±

N/F MORRISON DEVELOPMENT, LC
 DOCUMENT# 970001330
 TAX MAP# (47-1)(1-32)

N/F FIVE FORKS, VIRGINIA, INC.
 PARCEL 1
 FIVE FORKS, VIRGINIA, INC.
 TAX MAP# (46-2)(1-14)

VICINITY MAP
 SCALE 1"=2000'



LINE TABLE

LINE	BEARING	LENGTH
L1	S24°51'23"W	10.97'
L2	S16°44'33"E	70.00'
L3	N73°15'27"E	18.00'
L4	N78°46'50"E	38.30'
L5	S18°14'53"E	32.75'
L6	N79°45'06"E	27.08'

L7	S07°55'25"E	10.01'
L8	S79°45'06"W	25.26'
L9	S18°14'53"E	41.88'
L10	N72°38'39"E	29.48'
L11	N17°21'21"W	10.53'
L12	N82°04'35"E	10.14'
L13	S17°21'21"E	8.87'
L14	N72°38'39"E	11.84'

L15	N77°36'05"E	87.37'
L16	S12°06'31"E	20.00'
L17	S77°36'05"W	76.41'
L18	S12°23'55"E	34.20'
L19	S82°04'35"W	10.03'
L20	N12°23'55"W	33.42'
L21	S72°38'39"W	50.15'
L22	S18°14'53"E	12.58'

L23	S75°06'34"E	32.83'
L24	S07°55'25"E	10.85'
L25	N75°06'34"W	44.32'
L26	S71°45'07"W	8.43'
L27	N18°14'53"W	17.28'
L28	S72°38'39"W	51.96'
L29	S17°21'21"E	41.16'
L30	S72°38'39"W	10.00'
L31	N17°21'21"W	41.16'
L32	S72°38'39"W	68.60'
L33	S68°43'26"W	65.91'
L34	S71°44'34"W	23.08'
L35	S86°15'05"W	14.63'

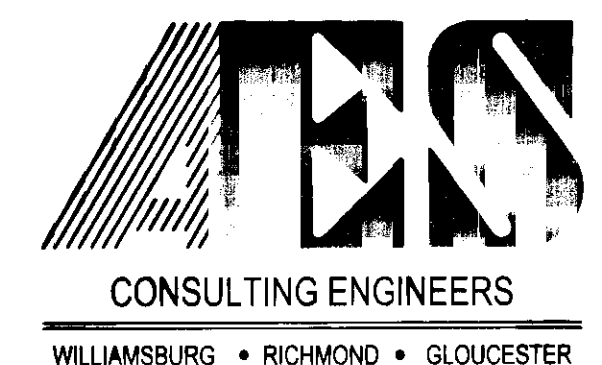
L36	N48°44'55"W	107.73'
L37	N74°55'15"E	24.03'
L38	S48°44'55"E	86.12'
L39	N86°15'05"E	4.07'
L40	N71°37'31"E	19.22'
L41	N68°43'26"E	67.49'
L42	N17°21'21"W	27.05'
L43	N72°38'39"E	10.00'
L44	S17°21'21"E	27.05'
L45	N72°38'39"E	95.67'
L46	N18°14'53"W	81.32'

CURVE TABLE

NO.	DELTA	RADIUS	LENGTH	TANGENT	CHORD	CH. BEARING
C1	4°24'02"	869.21	66.76	33.40	66.74	N62°09'22"E
C2	1°20'03"	869.21	20.24	10.12	20.24	N62°56'31"E

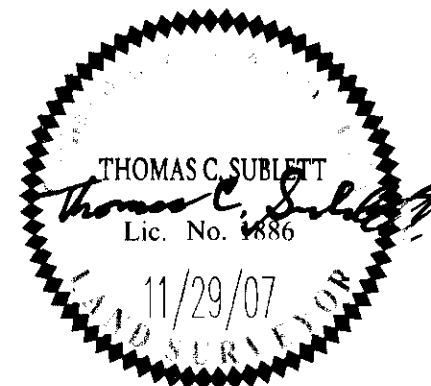
STATE OF VIRGINIA
 CITY OF WILLIAMSBURG & COUNTY OF JAMES CITY CIRCUIT COURT. THIS 4 DAY OF March, 2008.
 THE PLAT SHOWN HEREON WAS PRESENTED AND ADMITTED TO THE RECORD AS THE LAW DIRECTS. @ 10:03 AM/PM
 INSTRUMENT # 080006754

TESTE: *Betsy B. Woolridge*
 BETSY B. WOOLRIDGE, CLERK
By: Claudia H. Binkholz, Dep. Clerk



5248 Olde Towne Road, Suite 1
 Williamsburg, Virginia 23188
 (757) 253-0040
 Fax (757) 220-8994

PLAT SHOWING A
 VARIABLE WIDTH JCSA UTILITY
 EASEMENT ON PARCELS "C" & "D"
 POWHATAN OFFICE PARK SUBDIVISION
 BERKELEY DISTRICT COUNTY OF JAMES CITY VIRGINIA



No.	DATE	REVISION / COMMENT / NOTE	BY

Designed	Drawn
AES	RLS/JFS
Scale	Date
1"=30'	11/29/07
Project No.	
9444	
Drawing No.	
1 OF 1	