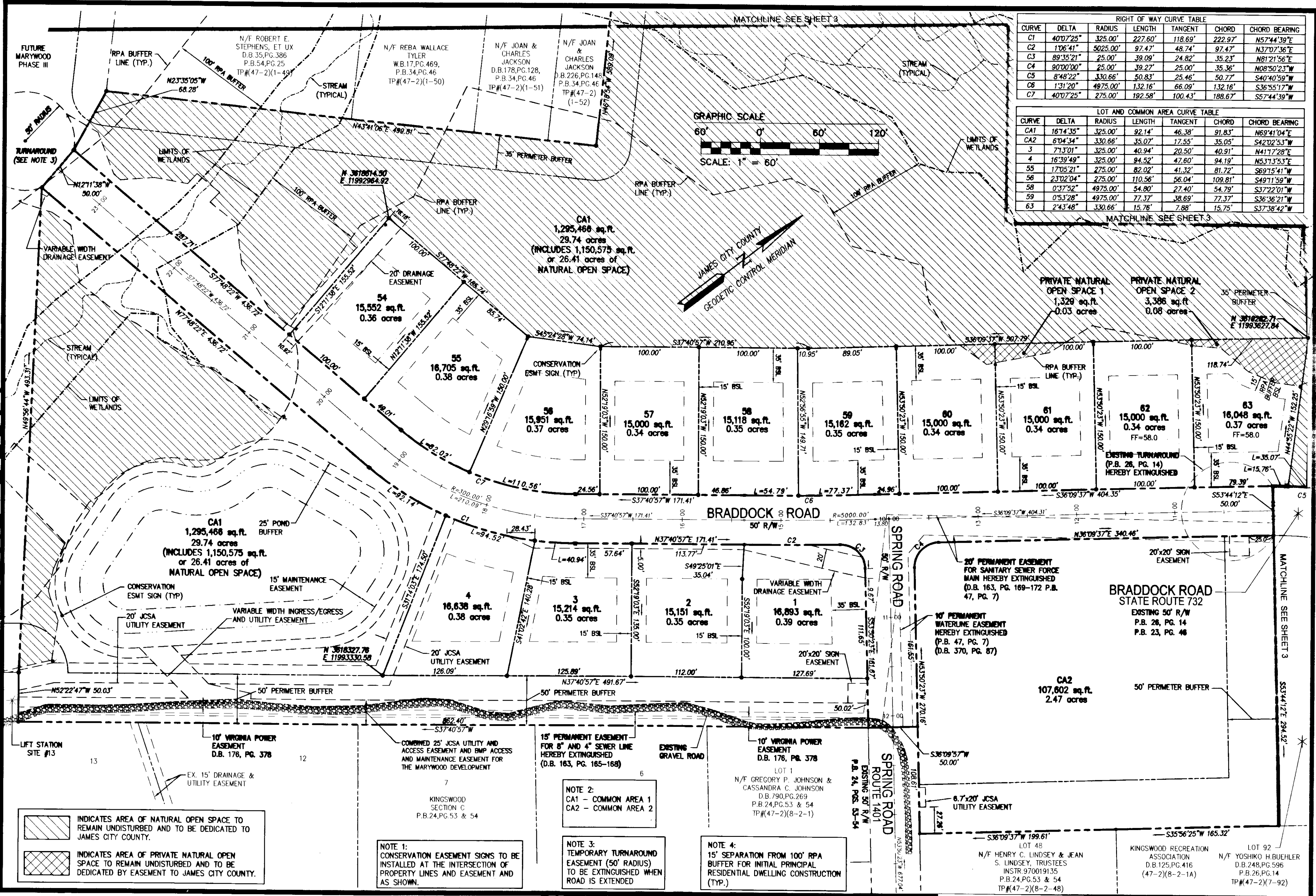


#08006519



RIGHT OF WAY CURVE TABLE

CURVE	DELTA	RADIUS	LENGTH	TANGENT	CHORD	CHORD BEARING
C1	40°07'25"	325.00'	227.60'	118.69'	222.97'	N57°44'39"E
C2	1°06'41"	5025.00'	97.47'	48.74'	97.47'	N37°07'36"E
C3	89°35'21"	25.00'	39.09'	24.82'	35.23'	N81°21'56"E
C4	90°00'00"	25.00'	39.27'	25.00'	35.36'	N08°50'23"W
C5	8°48'22"	330.66'	50.83'	25.46'	50.77'	S40°40'59"W
C6	1°31'20"	4975.00'	132.16'	66.09'	132.16'	S36°36'21"W
C7	40°07'25"	275.00'	192.58'	100.43'	188.67'	S57°44'39"W

LOT AND COMMON AREA CURVE TABLE

CURVE	DELTA	RADIUS	LENGTH	TANGENT	CHORD	CHORD BEARING
CA1	16°14'35"	325.00'	92.14'	46.38'	91.83'	N69°41'04"E
CA2	6°04'34"	330.66'	35.07'	17.55'	35.05'	S42°02'53"W
3	7°13'01"	325.00'	40.94'	20.50'	40.91'	N41°17'28"E
4	16°39'49"	325.00'	94.52'	47.60'	94.19'	N53°13'53"E
55	17°05'21"	275.00'	82.02'	41.32'	81.72'	S69°15'41"W
56	23°02'04"	275.00'	110.56'	56.04'	109.81'	S49°11'59"W
58	0°37'52"	4975.00'	54.80'	27.40'	54.79'	S37°22'01"W
59	0°53'28"	4975.00'	77.37'	38.69'	77.37'	S36°36'21"W
63	2°43'48"	330.66'	15.76'	7.88'	15.75'	S37°38'42"W

INDICATES AREA OF NATURAL OPEN SPACE TO REMAIN UNDISTURBED AND TO BE DEDICATED TO JAMES CITY COUNTY.

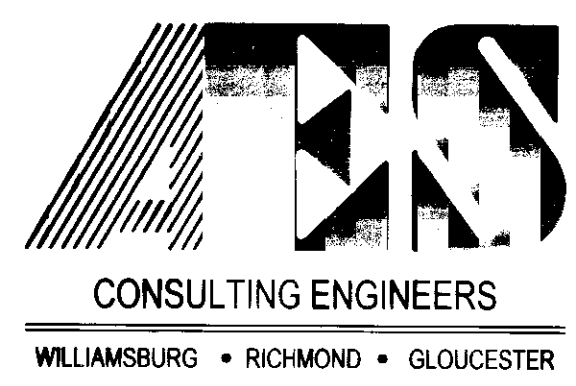
INDICATES AREA OF PRIVATE NATURAL OPEN SPACE TO REMAIN UNDISTURBED AND TO BE DEDICATED BY EASEMENT TO JAMES CITY COUNTY.

NOTE 1: CONSERVATION EASEMENT SIGNS TO BE INSTALLED AT THE INTERSECTION OF PROPERTY LINES AND EASEMENT AND AS SHOWN.

NOTE 2: CA1 - COMMON AREA 1
CA2 - COMMON AREA 2

NOTE 3: TEMPORARY TURNAROUND EASEMENT (50' RADIUS) TO BE EXTINGUISHED WHEN ROAD IS EXTENDED

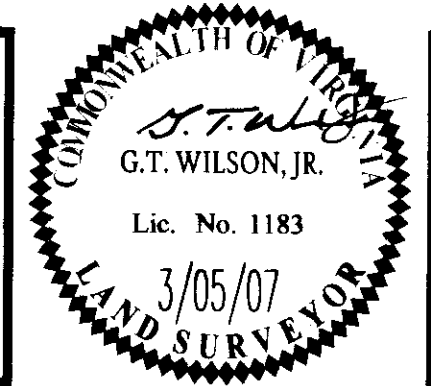
NOTE 4: 15' SEPARATION FROM 100' RPA BUFFER FOR INITIAL PRINCIPAL RESIDENTIAL DWELLING CONSTRUCTION (TYP.)



5248 Olde Towne Road, Suite 1
Williamsburg, Virginia 23188
(757) 253-0040
Fax (757) 220-8994

PLAT OF SUBDIVISION MARYWOOD PHASE I
LOTS 1-4 AND 54-63
PREPARED FOR CENTEX HOMES

JAMESTOWN DISTRICT JAMES CITY COUNTY VIRGINIA



City of Williamsburg & County of James City
Circuit Court: This PLAT was recorded on
29 February 2008
at *3:30* AM/PM, PG. *—*
DOCUMENT # *08006519*
BETSY B. WOOLRIDGE, CLERK
Betsy B. Woolridge Clerk

No.	DATE	REVISION / COMMENT / NOTE	REVIEWED BY	REVIEWED BY
1	9/20/07	REVISED PER COUNTY COMMENTS DATED 9/10/07	JFS	JFS

Designed	Drawn
JAG/MJR	JFS
Scale	Date
1"=60'	3/5/07
Project No.	
9272	
Drawing No.	
2 OF 3	