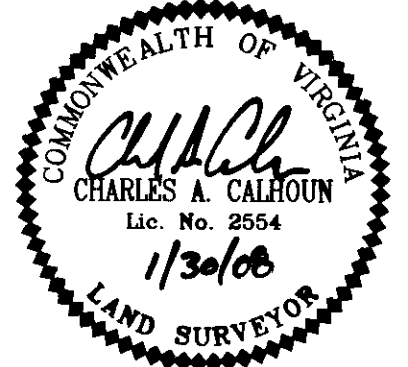
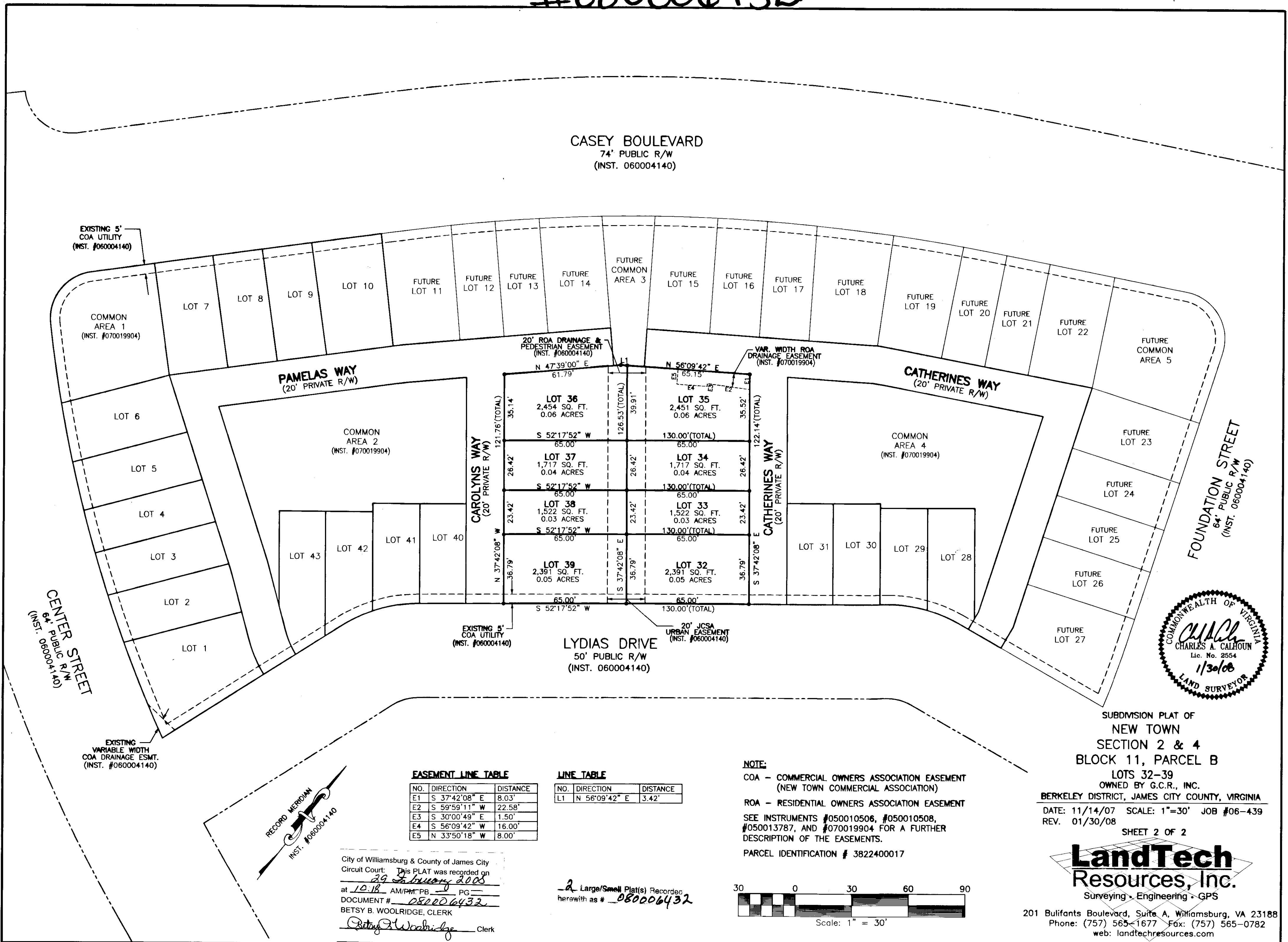


#080006432

CASEY BOULEVARD
74' PUBLIC R/W
(INST. 060004140)



SUBMISSION PLAT OF
NEW TOWN
SECTION 2 & 4
BLOCK 11, PARCEL B
LOTS 32-39

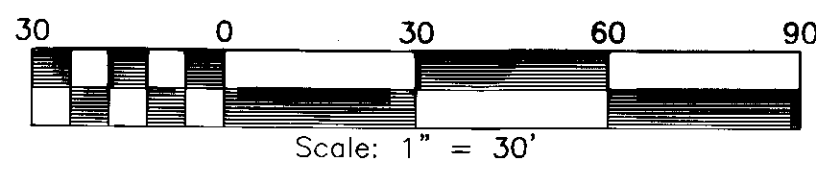
OWNED BY G.C.R., INC.
BERKELEY DISTRICT, JAMES CITY COUNTY, VIRGINIA
DATE: 11/14/07 SCALE: 1"=30' JOB #06-439
REV. 01/30/08

SHEET 2 OF 2

LandTech
Resources, Inc.
Surveying - Engineering - GPS

201 Bulifants Boulevard, Suite A, Williamsburg, VA 23188
Phone: (757) 565-1677 Fax: (757) 565-0782
web: landtechresources.com

NOTE:
COA - COMMERCIAL OWNERS ASSOCIATION EASEMENT
(NEW TOWN COMMERCIAL ASSOCIATION)
ROA - RESIDENTIAL OWNERS ASSOCIATION EASEMENT
SEE INSTRUMENTS #050010506, #050010508,
#050013787, AND #070019904 FOR A FURTHER
DESCRIPTION OF THE EASEMENTS.
PARCEL IDENTIFICATION # 3822400017

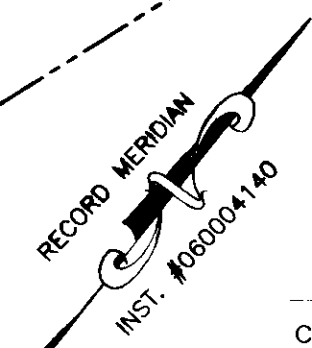


EASEMENT LINE TABLE

NO.	DIRECTION	DISTANCE
E1	S 37°42'08" E	8.03'
E2	S 59°59'11" W	22.58'
E3	S 30°00'49" E	1.50'
E4	S 56°09'42" W	16.00'
E5	N 33°50'18" W	8.00'

LINE TABLE

NO.	DIRECTION	DISTANCE
L1	N 56°09'42" E	3.42'



City of Williamsburg & County of James City
Circuit Court: This PLAT was recorded on
29 February 2008
at 10:18 AM/PM/TPB PG
DOCUMENT # 080006432
BETSY B. WOOLRIDGE, CLERK
Betsy B. Woolridge Clerk

2 Large/Small Plat(s) Recorded
herewith as # 080006432