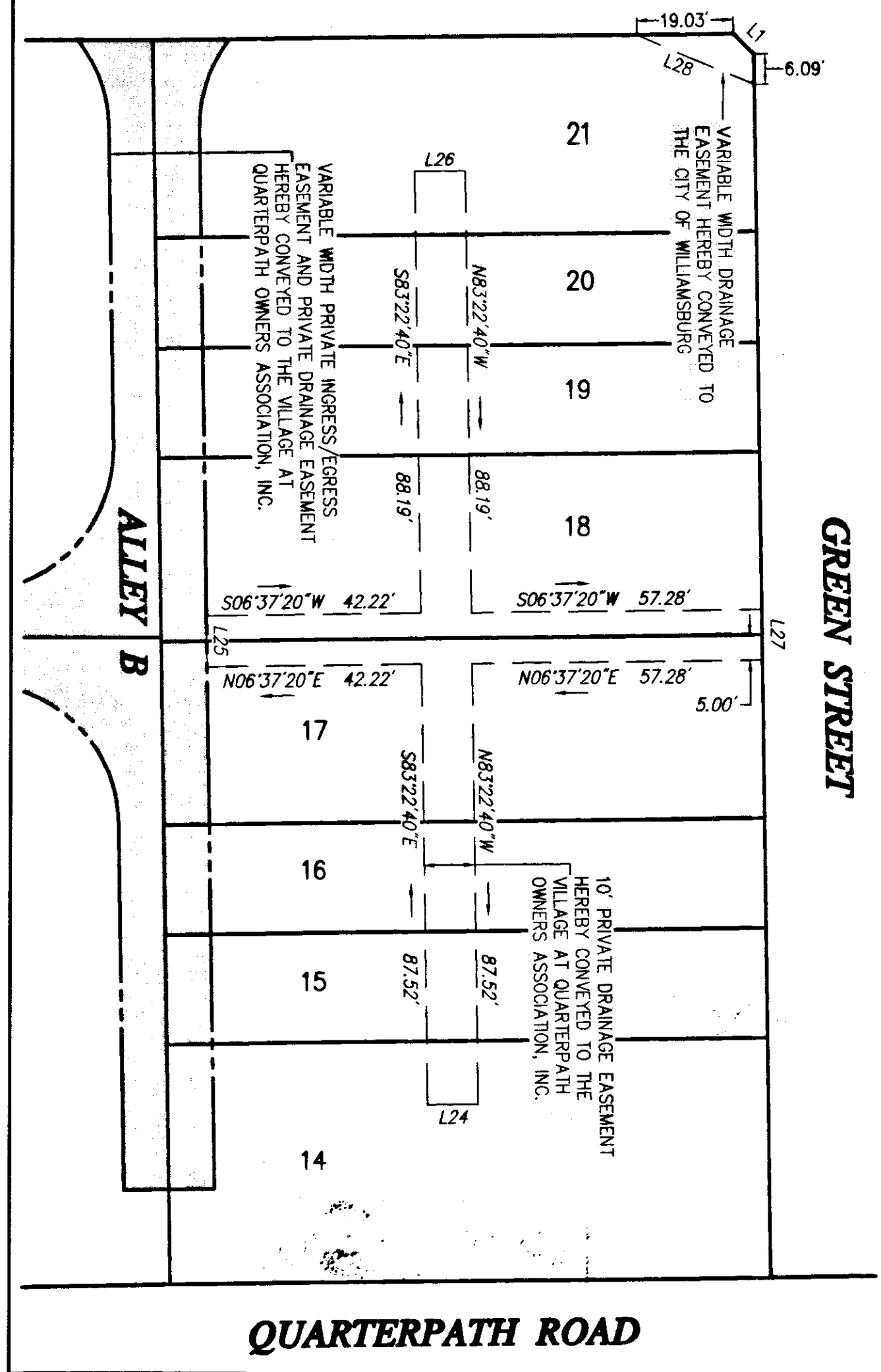
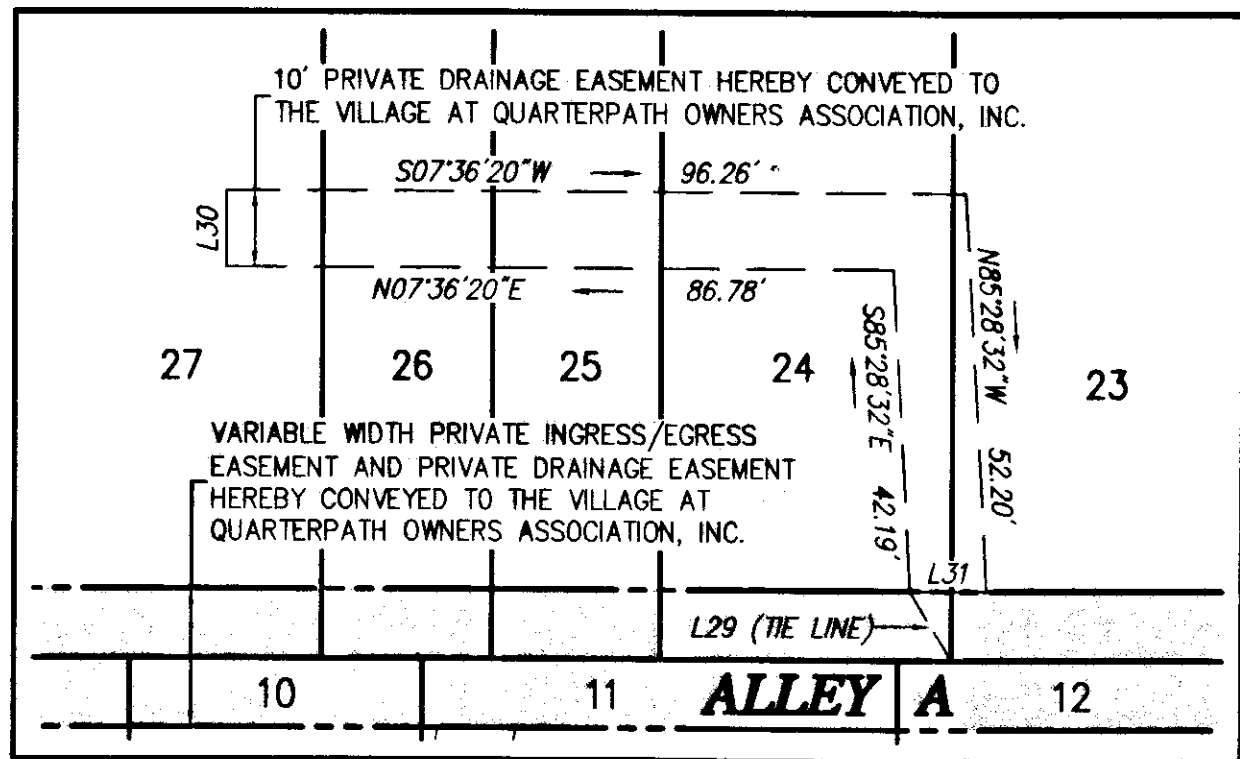


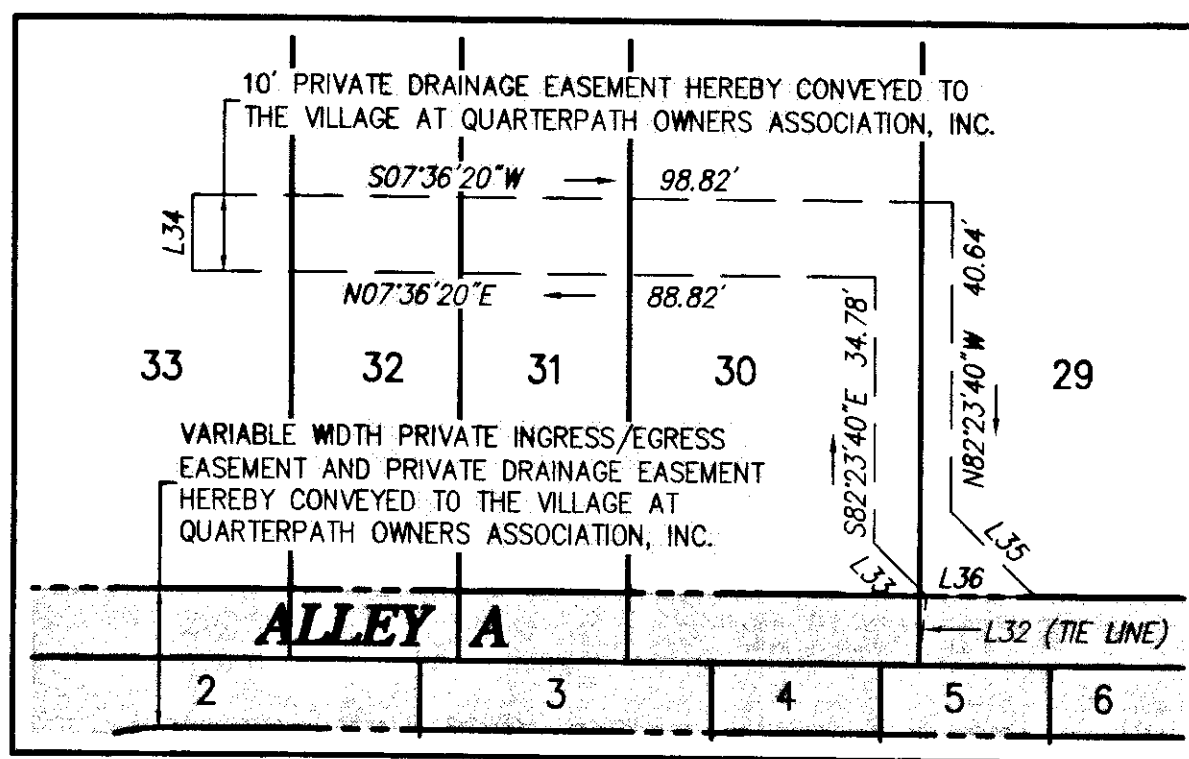
LEWIS BURWELL PLACE



DETAIL B
SCALE: 1"=25'

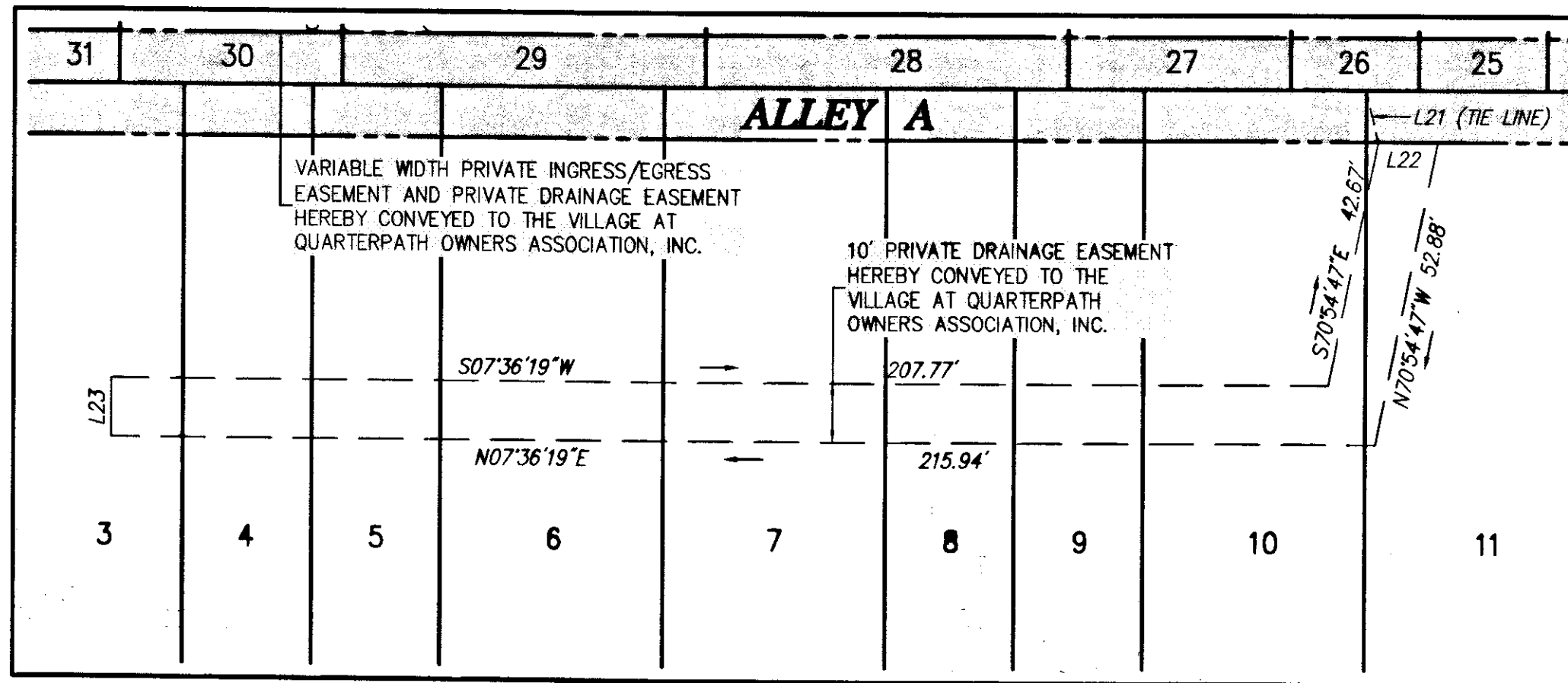


DETAIL C
SCALE: 1"=25'



DETAIL D
SCALE: 1"=25'

EASEMENT LINE TABLE		
LINE	LENGTH	BEARING
L15	10.00'	N82'23'40"W
L16	20.00'	N07'36'20"E
L17	10.00'	S82'23'40"E
L18	18.27'	S82'23'40"E
L19	18.00'	S07'36'20"W
L20	3.00'	N82'23'40"W
L21	9.23'	S84'40'09"W
L22	10.20'	S07'36'20"W
L23	10.00'	S82'23'41"E
L24	10.00'	N06'37'20"E
L25	10.00'	S83'22'40"E
L26	10.00'	S06'37'20"W
L27	10.00'	N83'22'40"W
L28	25.14'	S30'17'36"W
L29	10.54'	N66'12'52"E
L30	10.00'	S82'23'40"E
L31	10.01'	N07'36'20"E
L32	9.05'	S76'29'53"E
L33	9.80'	N52'36'20"E
L34	10.00'	S82'23'40"E
L35	15.66'	S52'36'20"W
L36	14.14'	N07'36'20"E
L37	11.66'	S83'22'40"E
L38	5.66'	S38'22'40"E



DETAIL A
SCALE: 1"=25'

PLAT SHOWING
PROPERTY LINE VACATION, SUBDIVISION
AND RIGHT OF WAY DEDICATION
**THE VILLAGE AT QUARTERPATH
PHASE I**
CITY OF WILLIAMSBURG, VIRGINIA

DATE: 06/15/07 SHEET 8 OF 8 SCALE: AS NOTED

PROJECT NO: 31980.01 DRAWN BY: DWP

VHB Vanasse Hangen Brustlin, Inc.
Transportation Land Development Environmental Services
11832 Rock Landing Drive, Suite 207
Newport News, Virginia 23606-4231
(757) 873-3386 • FAX (757) 873-0737

REVISED: 09/18/07



072483

Large/Small Plat(s) Recorded
herewith as # 072483

State Of Virginia
City Of Williamsburg

IN THE CLERK'S OFFICE OF THE CIRCUIT COURT FOR THE CITY OF WILLIAMSBURG AND COUNTY OF JAMES CITY, VIRGINIA THIS 28 DAY OF September, 2007. THIS MAP WAS PRESENTED AND ADMITTED TO RECORD AS THE LAW DIRECTS AS INSTRUMENT NUMBER 072483 @ 2:07 PM

TESTE: Betsy B. Woodruff
CLERK
BY: Claudia H. Birkholz, Reg. Clerk