

072483

NOW OR FORMERLY
WHP HOTEL OWNER-1, L.P.
INST. #020029573
PARCEL #413-01-00-001
ZONED B-1

JAMES CITY COUNTY

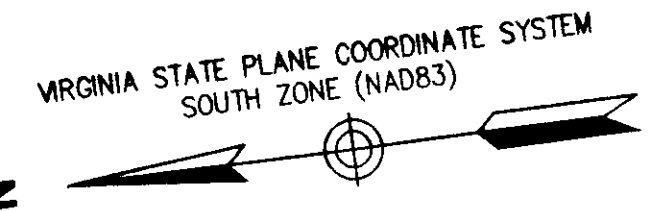
PLAT SHOWING
PROPERTY LINE VACATION, SUBDIVISION
AND RIGHT OF WAY DEDICATION
**THE VILLAGE AT QUARTERPATH
PHASE I**
CITY OF WILLIAMSBURG, VIRGINIA

DATE: 06/15/07 SHEET 4 OF 8 SCALE: 1"=30'

PROJECT NO: 31980.01 DRAWN BY: DWP

VHB Vanasse Hangen Brustlin, Inc.
Transportation Land Development Environmental Services
11832 Rock Landing Drive, Suite 207
Newport News, Virginia 23606-4231
(757) 873-3386 • FAX (757) 873-0757

REVISED: 09/18/07



Notes:

- 1. SEE SHEET 6 AND 8 FOR LINE DATA TABLES
- 2. SEE SHEET 7 FOR CURVE DATA TABLES

LOCATION OF ALLEYS - ALLEYS AND DRAINAGE SYSTEMS WITHIN THE ALLEYS ARE PRIVATE AND WILL BE MAINTAINED BY THE VILLAGE AT QUARTERPATH OWNERS' ASSOCIATION, INC.

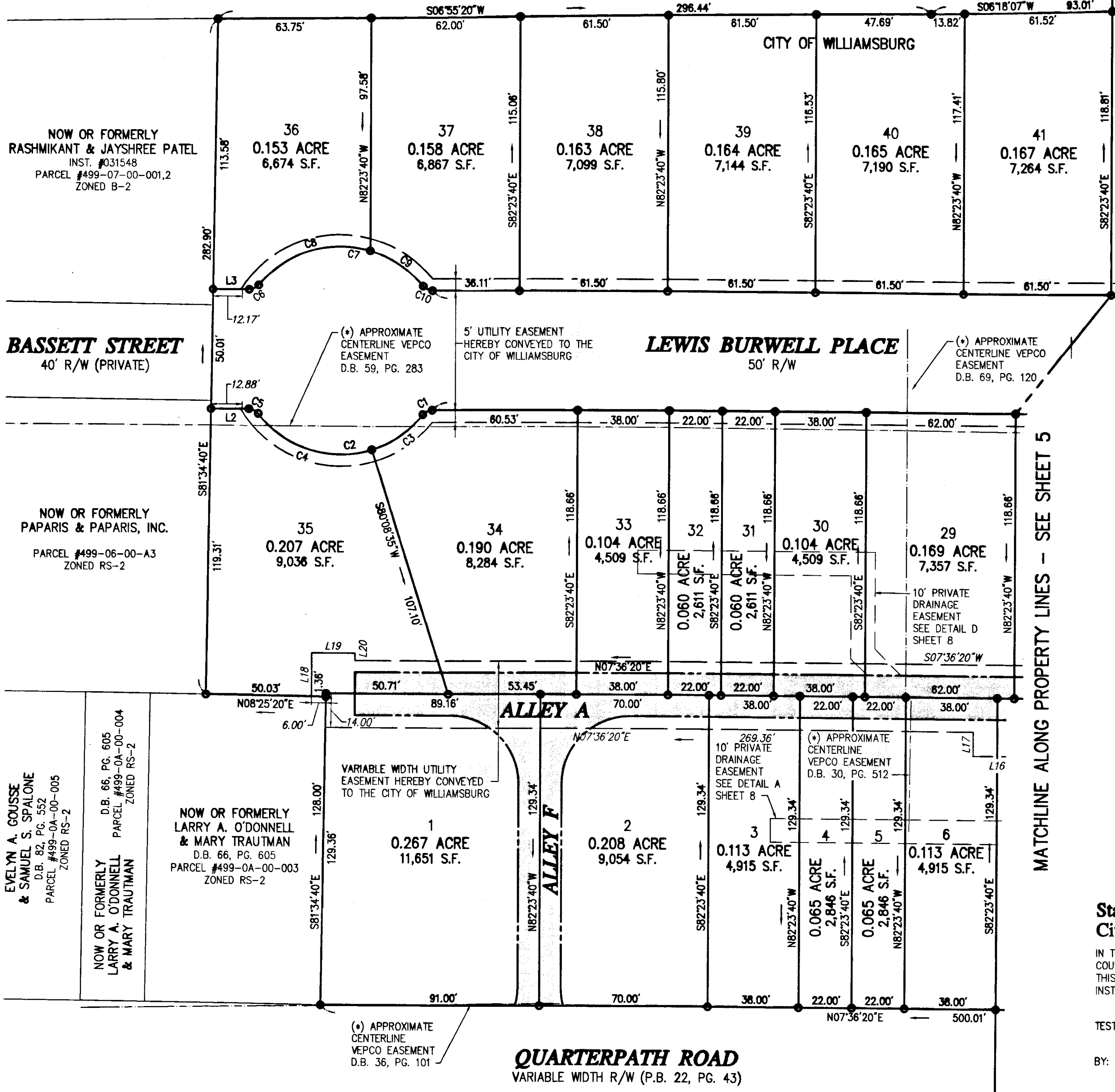


Large/Small Plots: Proposed herewith as # 072483

**State Of Virginia
City Of Williamsburg**

IN THE CLERK'S OFFICE OF THE CIRCUIT COURT FOR THE CITY OF WILLIAMSBURG AND COUNTY OF JAMES CITY, VIRGINIA THIS 28 DAY OF September, 2007. THIS MAP WAS PRESENTED AND ADMITTED TO RECORD AS THE LAW DIRECTS AS INSTRUMENT NUMBER 072483 @ 3:07 PM

TESTE: Betsy B. Woolridge
CLERK
BY: Claudia St. Bickelzy Dep Clerk



MATCHLINE ALONG PROPERTY LINES - SEE SHEET 5

QUARTERPATH ROAD
VARIABLE WIDTH R/W (P.B. 22, PG. 43)

NOW OR FORMERLY
RASHMIKANT & JAYSHREE PATEL
INST. #031548
PARCEL #499-07-00-001,2
ZONED B-2

BASSETT STREET
40' R/W (PRIVATE)

NOW OR FORMERLY
PAPARIS & PAPARIS, INC.
PARCEL #499-06-00-A3
ZONED RS-2

EVELYN A. GOUSSE
& SAMUEL S. SPALONE
D.B. 82, PG. 552
PARCEL #499-0A-00-005
ZONED RS-2

NOW OR FORMERLY
LARRY A. O'DONNELL
& MARY TRAUTMAN
D.B. 66, PG. 605
PARCEL #499-0A-00-004
ZONED RS-2

NOW OR FORMERLY
LARRY A. O'DONNELL
& MARY TRAUTMAN
D.B. 66, PG. 605
PARCEL #499-0A-00-003
ZONED RS-2

36
0.153 ACRE
6,674 S.F.

37
0.158 ACRE
6,867 S.F.

38
0.163 ACRE
7,099 S.F.

39
0.164 ACRE
7,144 S.F.

40
0.165 ACRE
7,190 S.F.

41
0.167 ACRE
7,264 S.F.

35
0.207 ACRE
9,036 S.F.

34
0.190 ACRE
8,284 S.F.

33
0.104 ACRE
4,509 S.F.

32
0.060 ACRE
2,611 S.F.

31
0.060 ACRE
2,611 S.F.

30
0.104 ACRE
4,509 S.F.

29
0.169 ACRE
7,357 S.F.

1
0.267 ACRE
11,651 S.F.

2
0.208 ACRE
9,054 S.F.

3
0.113 ACRE
4,915 S.F.

4
0.065 ACRE
2,846 S.F.

5
0.065 ACRE
2,846 S.F.

6
0.113 ACRE
4,915 S.F.