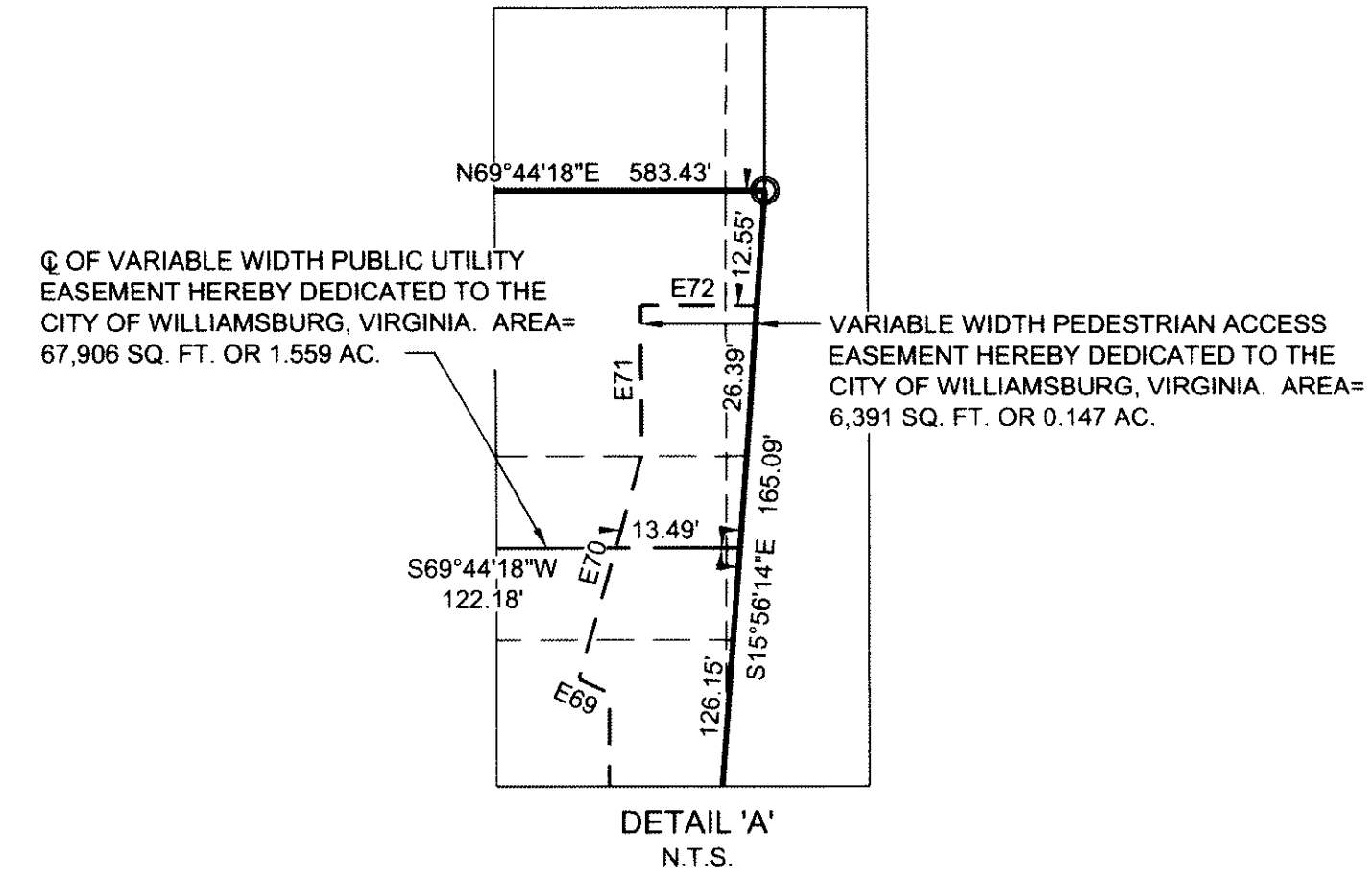
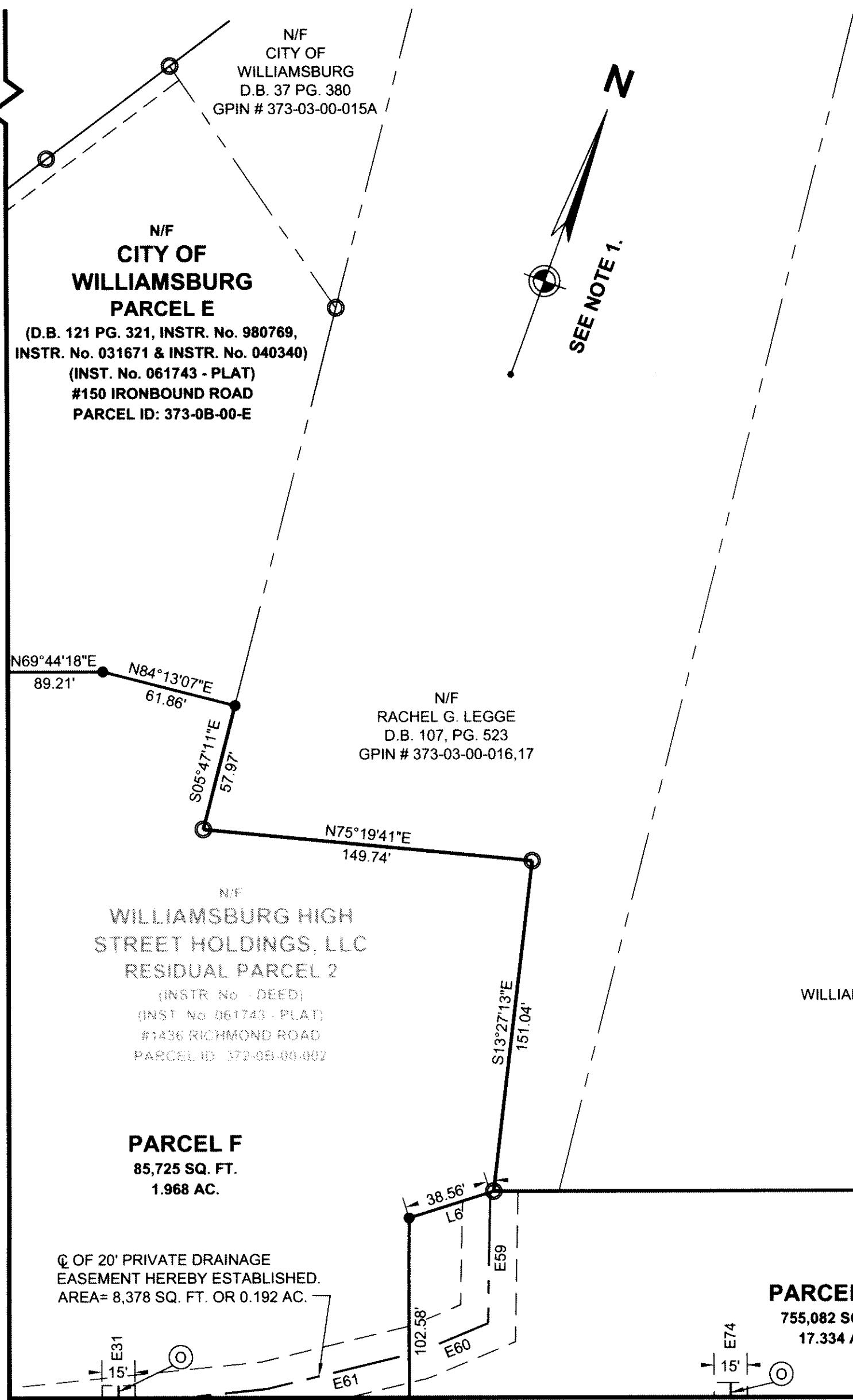


MATCHLINE SEE SHEET 2 OF 9



⊙ Q OF VARIABLE WIDTH PUBLIC UTILITY EASEMENT HEREBY DEDICATED TO THE CITY OF WILLIAMSBURG, VIRGINIA. AREA= 67,906 SQ. FT. OR 1.559 AC.

Q OF UNSPECIFIED WIDTH VEPCO EASEMENT (D.B. 27 PG. 404) (D.B. 27 PG. 410) (D.B. 28 PG. 303)

Q OF VARIABLE WIDTH PUBLIC UTILITY EASEMENT HEREBY DEDICATED TO THE CITY OF WILLIAMSBURG, VIRGINIA. AREA= 67,906 SQ. FT. OR 1.559 AC.

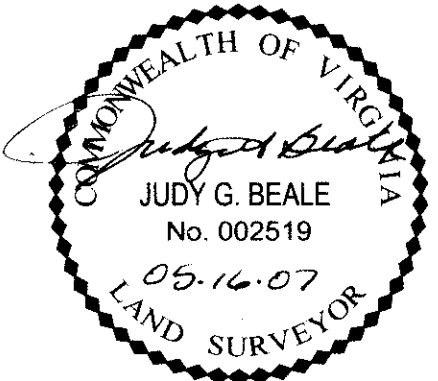
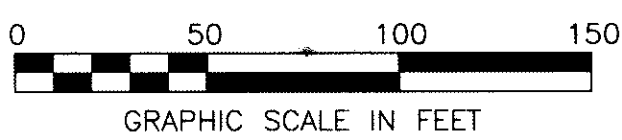
VARIABLE WIDTH PEDESTRIAN ACCESS EASEMENT HEREBY DEDICATED TO THE CITY OF WILLIAMSBURG, VIRGINIA. AREA= 6,391 SQ. FT. OR 0.147 AC.

MATCHLINE SEE SHEET 5 OF 9

SEE SHEET 1 OF 9 NOTES & CERTIFICATIONS
SEE SHEET 9 OF 9 FOR CURVE & LINE TABLES

LEGEND

- IP(S) IRON PIN TO BE SET
- IP(F) IRON PIN FOUND
- NAIL(S) NAIL TO BE SET
- ⊙ NAIL(F) NAIL FOUND
- PIPE(F) IRON PIPE FOUND



VIRGINIA: 9 071835
IN THE CLERK'S OFFICE OF THE CIRCUIT COURT OF THE CITY OF WILLIAMSBURG, VIRGINIA ON THIS 21 DAY OF June, 2007, THIS PLAT WAS RECEIVED AND ADMITTED TO RECORD IN MAP BOOK AT PAGE AT 2:15 p.m.
Inst. 071835
TESTE: [Signature] CLERK

RESUBDIVISION
OF PROPERTY OF
WILLIAMSBURG HIGH STREET HOLDINGS, LLC
RESIDUAL PARCEL 2
AND
CITY OF WILLIAMSBURG, VIRGINIA
PARCELS C2, G2 & G3
(INSTR. No. 061743)
WILLIAMSBURG, VIRGINIA

	DES. <u>N/A</u>	JOB NO. <u>62896.04</u>
	DRN. <u>RDA</u>	SCALE <u>1"=50'</u>
	CKD. <u>JGB</u>	DATE <u>9-25-06</u>
WOOLPERT, INC. 415 PORT CENTRE PARKWAY SUITE 101 PORTSMOUTH, VA 23704-4924 TEL: 757.399.6882 FAX: 757.399.6869		SHEET NO. <u>3</u> OF <u>9</u>
		FILE NO. <u>Prelimsub2-sh3.dwg</u>

REVISED: 05-11-07 - CITY COMMENTS
REVISED: 04-27-07 - CITY COMMENTS
REVISED: 04-19-07 - PARCEL C1 & C2-A
REVISED: 03-30-07 - PARCEL G-1