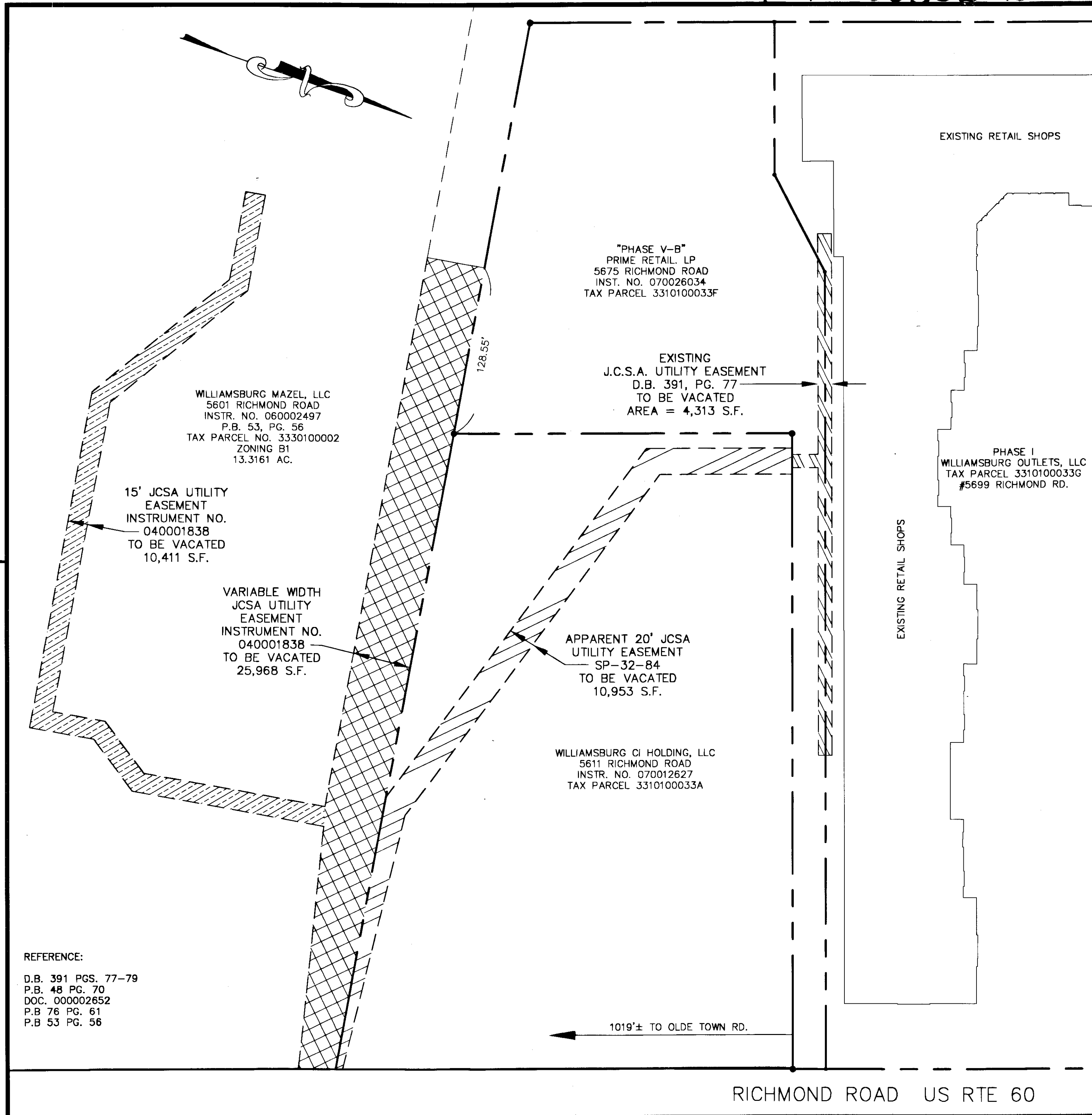
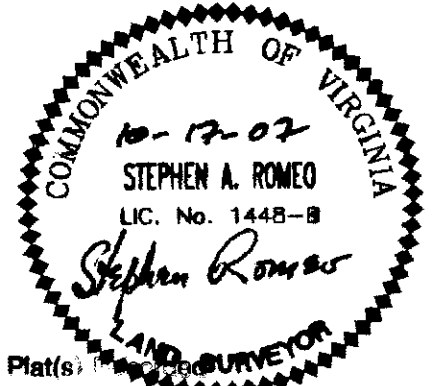
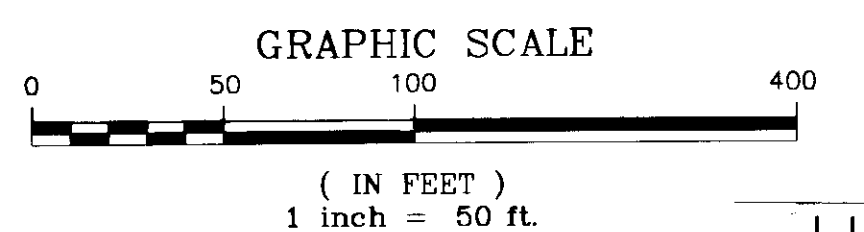


#070035272



PLAT SHOWING
EXISTING UTILITY EASEMENT
ON PROPERTY OF
WILLIAMSBURG MAZEL, LLC
TO BE VACATED BY
JAMES CITY SERVICE AUTHORITY

JAMES CITY COUNTY, VIRGINIA
SCALE 1"=50' DATE: 10/16/07



Large/Small Plat(s)
herewith as # 070035272

**LANDMARK
DESIGN GROUP**
Engineers • Planners • Surveyors
Landscape Architects • Environmental Consultants

City of Williamsburg & County of James City
Circuit Court: This PLAT was recorded on
at 3:54 AM on 10/16/07
DOCUMENT # 070035272
BETSY B. WOOLRIDGE, CLERK

4029 Waterside Road
Suite 100
Williamsburg, VA 23108
Tel. (757) 253-2975
Fax (757) 229-0049
Email: lmdg@landmarkdg.com

5544 Greenwich Road
Suite 200
Virginia Beach, VA 23462
Tel. (757) 473-2000
Fax (757) 497-7933
Email: lmdg@landmarkdg.com

REFERENCE:
D.B. 391 PGS. 77-79
P.B. 48 PG. 70
DOC. 000002652
P.B. 76 PG. 61
P.B. 53 PG. 56

RICHMOND ROAD US RTE 60

DRAWN BY: PF
CHKD. BY: AST

PROJ. NO.: 1870040-900.00
DWG. NO.: 18079AW