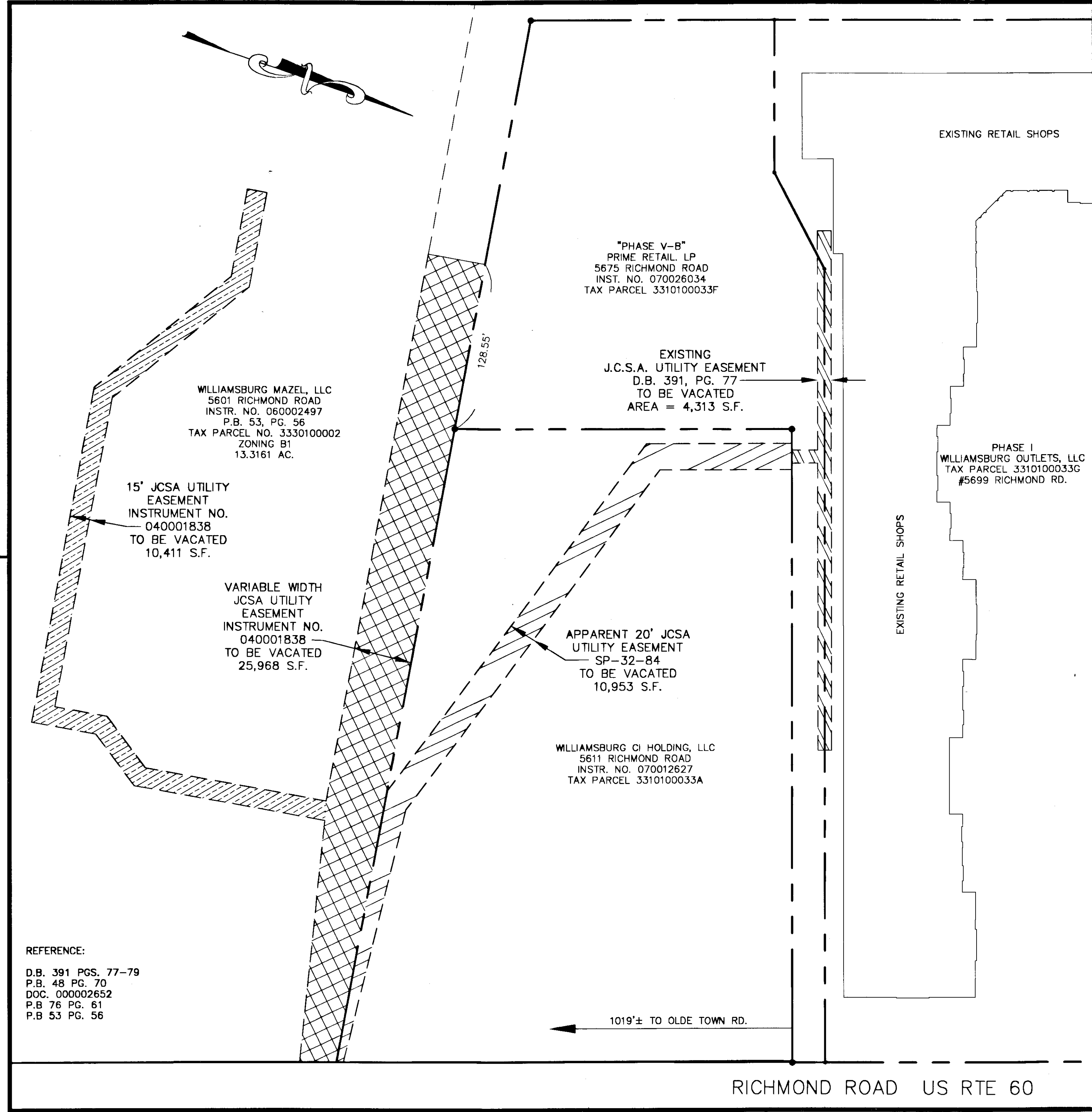
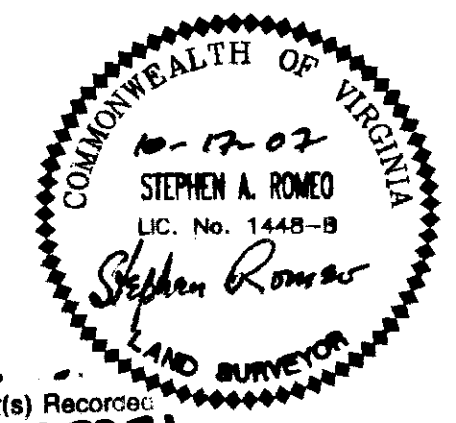
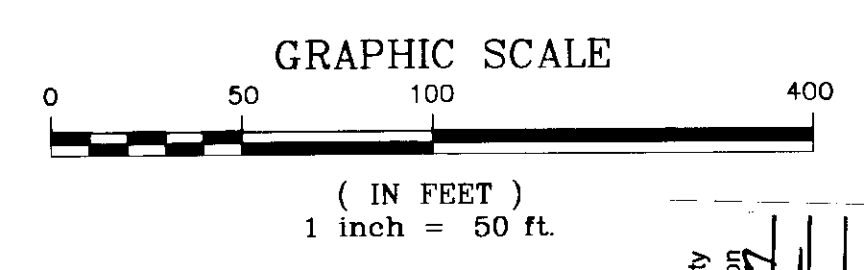


#070035271



PLAT SHOWING
EXISTING UTILITY EASEMENT
ON PROPERTY OF
WILLIAMSBURG CI HOLDING, LLC
TO BE VACATED BY
JAMES CITY SERVICE AUTHORITY

JAMES CITY COUNTY, VIRGINIA
SCALE 1"=50' DATE: 10/16/07



Large/Small Plats) Recorded
herewith as # 070035271

City of Williamsburg & County of James City
Circuit Court: This PLAT was recorded on
at 2:52 PM/PB PG
DOCUMENT # 070035271
BETSY B. WOOLRIDGE, CLERK
Betsy B. Woolridge Clerk

LANDMARK
DESIGN GROUP
Engineers • Planners • Surveyors
Landscape Architects • Environmental Consultants

5544 Greenwich Road
Suite 200
Virginia Beach, VA 23462
Tel. (757) 473-2000
Fax (757) 497-7933
Email: lmdg@landmarkdg.com

REFERENCE:
D.B. 391 PGS. 77-79
P.B. 48 PG. 70
DOC. 00002652
P.B. 76 PG. 61
P.B. 53 PG. 56

RICHMOND ROAD US RTE 60

DRAWN BY: PF
CHKD. BY: AST
PROJ. NO.: 1870040-900.00
DWG. NO.: 18079W