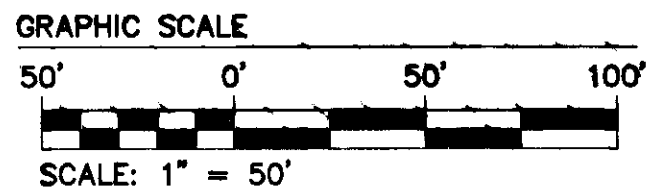


# #070033312

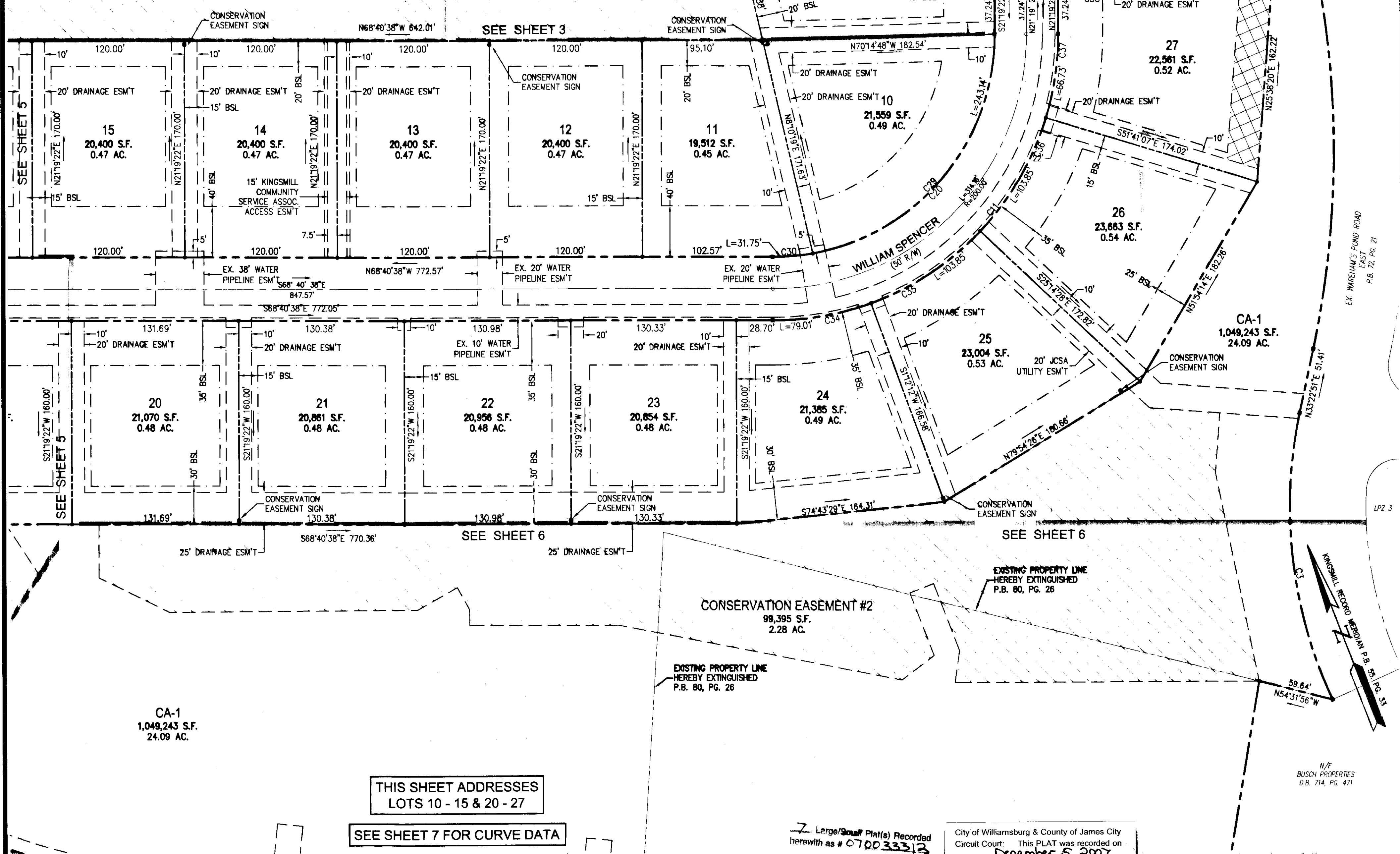


CONSERVATION EASEMENT #1  
CA-3  
77,912 S.F.  
1.79 AC.

CONSERVATION EASEMENT FOR NATURAL OPEN SPACE 194,583 S.F. OR 4.467 AC. (HEREBY DEDICATED TO JAMES CITY COUNTY)

LANDSCAPE RESTRICTION ZONE

SEE SHEET 3

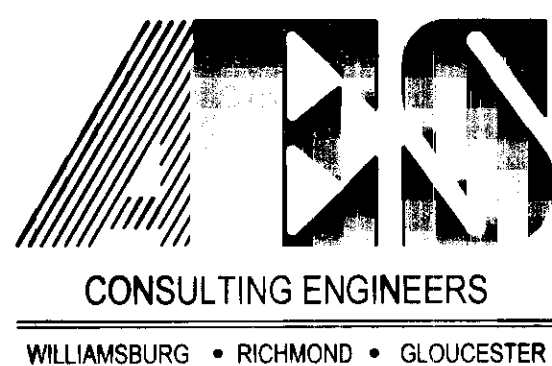


THIS SHEET ADDRESSES  
LOTS 10 - 15 & 20 - 27

SEE SHEET 7 FOR CURVE DATA

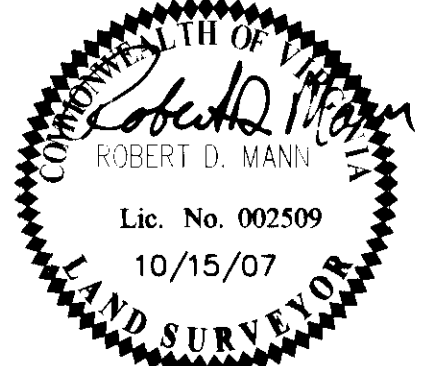
7 Large/Small Plat(s) Recorded herewith as # 070033312

City of Williamsburg & County of James City Circuit Court: This PLAT was recorded on December 5, 2007 at 3:45 PM, P.B. PG. DOCUMENT # 070033312. BETSY B. WOOLRIDGE, CLERK. *Betsy B. Woolridge* Clerk.



5248 Olde Towne Road, Suite 1  
Williamsburg, Virginia 23188  
(757) 253-0040  
Fax (757) 220-8994

PLAT OF SUBDIVISION  
**SPENCER'S GRANT**  
KINGSMILL ON THE JAMES  
PHASE 1, LOTS 1 - 38  
OWNER/DEVELOPER: BUSCH PROPERTIES, INC.  
ROBERTS DISTRICT JAMES CITY COUNTY VIRGINIA



No.	DATE	REVISION / COMMENT / NOTE	BY
3	10/15/07	REVISED PLAT INTO TWO PHASES	AWT
2	4/16/07	REVISED PER NEWPORT NEWS WATER WORKS COMMENTS	AWT
1	10/11/06	REVISED PER J.C.C. COMMENT LETTERS	AWT

Designed <b>MAR/REC</b>	Drawn <b>AES</b>
Scale <b>1"=50'</b>	Date <b>10/15/07</b>
Project No. <b>7753-20</b>	
Drawing No. <b>4 of 7</b>	