

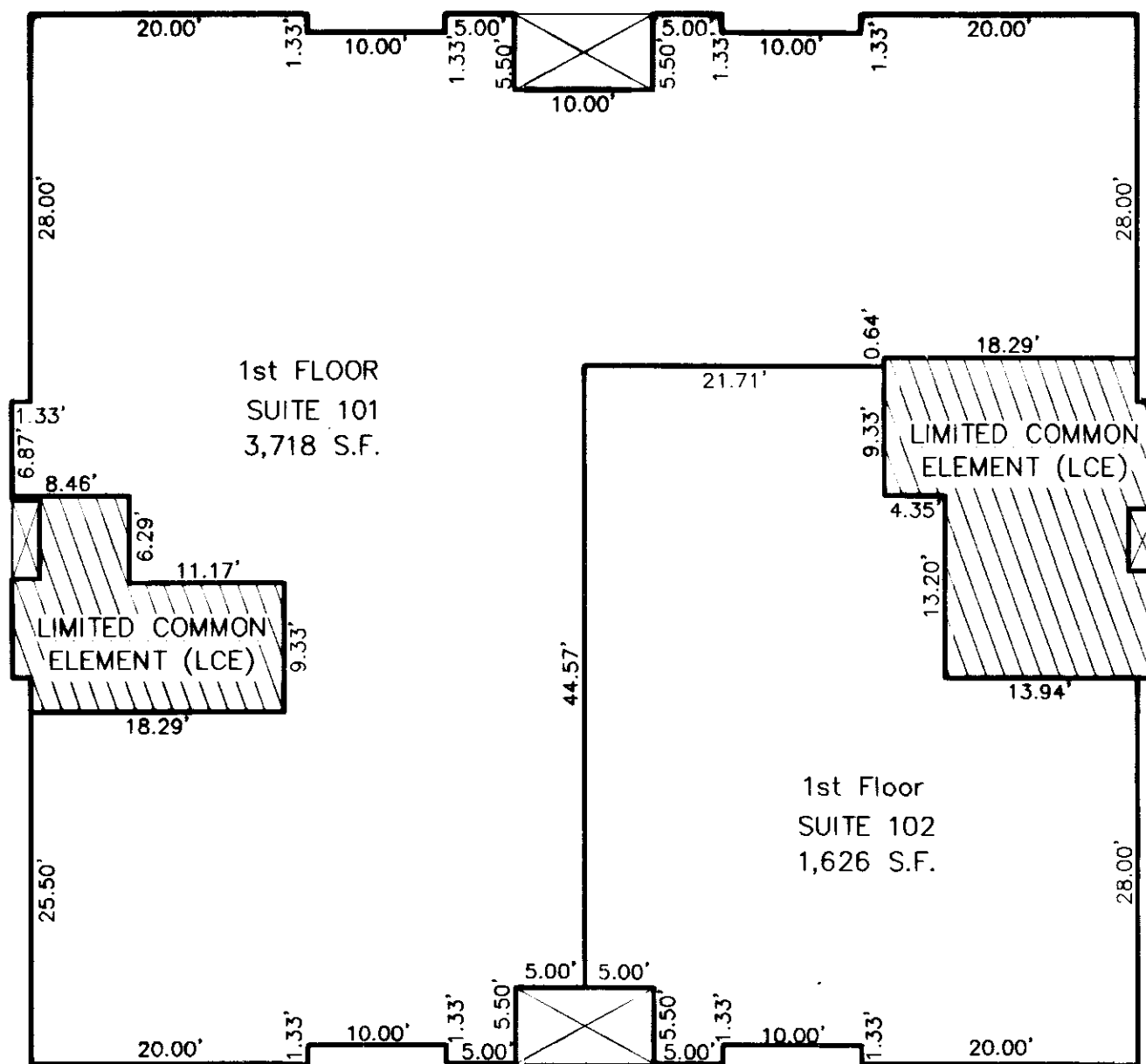
#070031990

BUILDING "C"

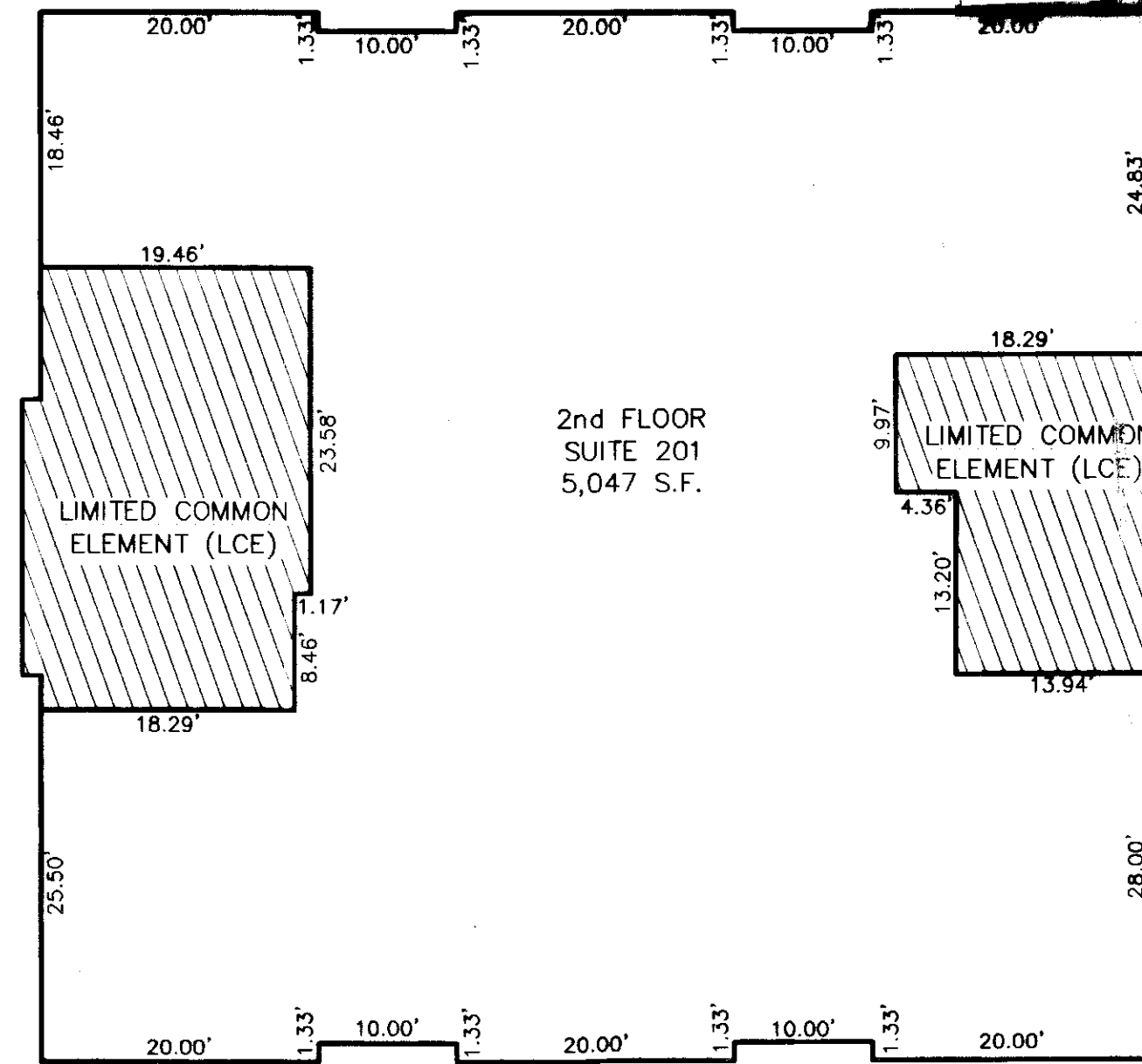
2 Large/Small Plat(s) Recorded
herewith as # 070031990

City of Williamsburg & County of James City
Circuit Court: This PLAT was recorded on
11-20-2007
at 1:42 AM/PM. PG. 1
DOCUMENT # 070031990
BETSY B. WOOLRIDGE, CLERK
Betsy B. Woolridge Clerk

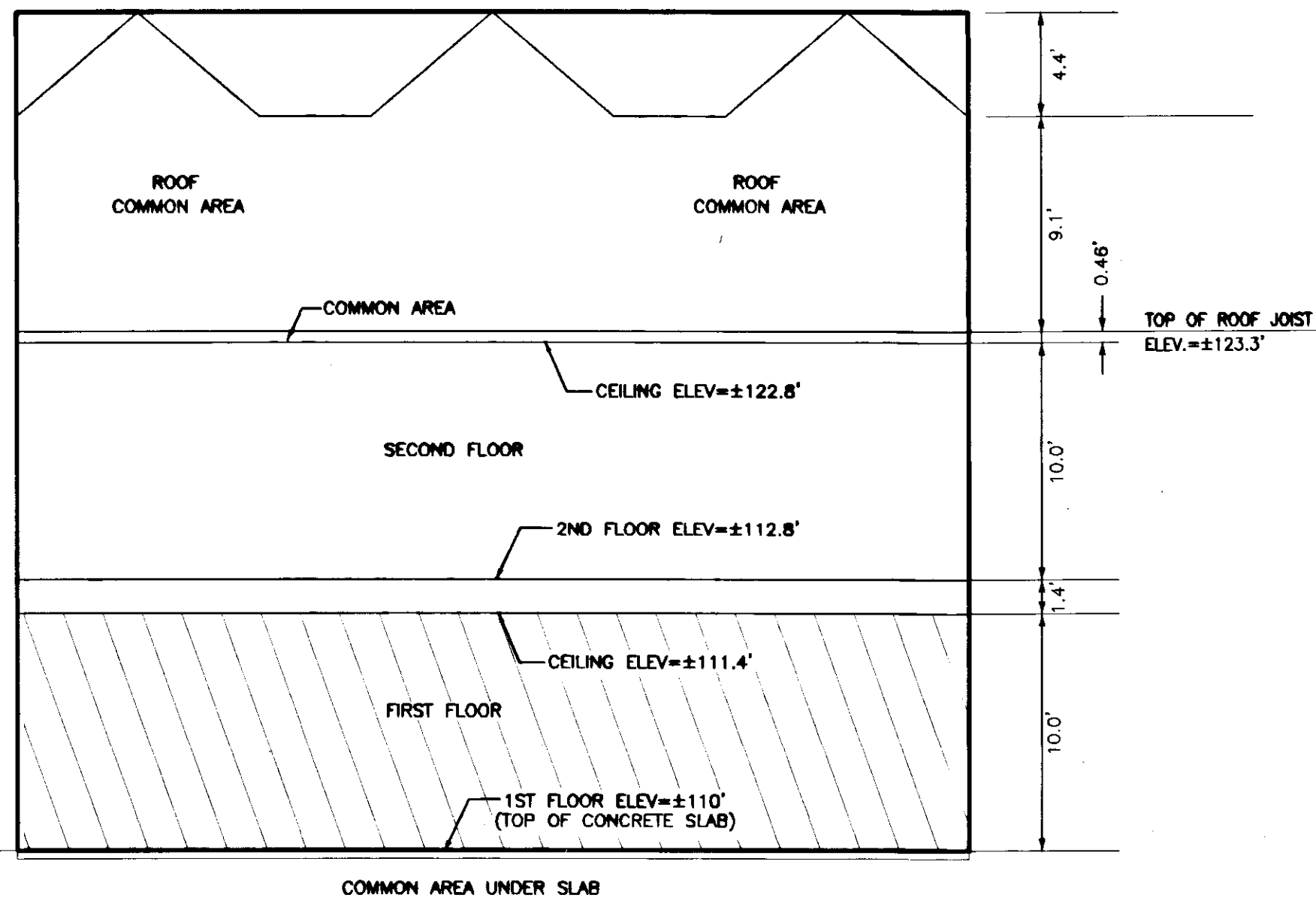
FIRST FLOOR PLAN SECTION



SECOND FLOOR PLAN SECTION

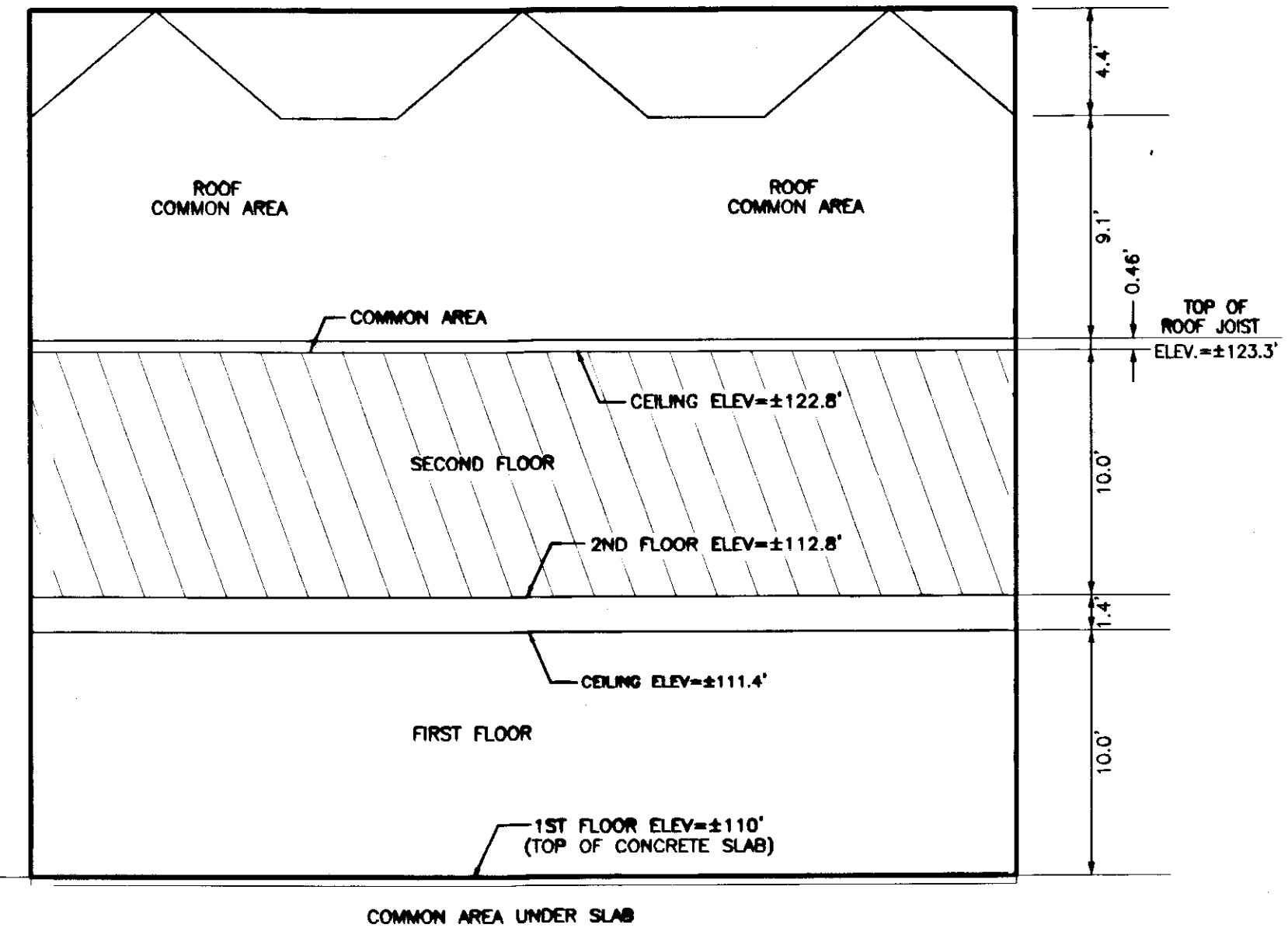


FIRST FLOOR ELEVATION SECTION



NOTE
LIMITED COMMON ELEMENT EXISTS AND EXTENDS THROUGH SECOND FLOOR. LIMITED COMMON ELEMENT CONSISTS OF STAIRWELLS, ENTRYWAYS, ELEVATORS, ELECTRICAL ROOMS AND SECOND FLOOR RESTROOMS AND IS SHOWN ON PLAN SECTION.

SECOND FLOOR ELEVATION SECTION



NOTE
LIMITED COMMON ELEMENT EXISTS AND EXTENDS THROUGH SECOND FLOOR. LIMITED COMMON ELEMENT CONSISTS OF STAIRWELLS, ENTRYWAYS, ELEVATORS, ELECTRICAL ROOMS AND SECOND FLOOR RESTROOMS AND IS SHOWN ON PLAN SECTION.

PLAN SHOWING BUILDINGS C
DISCOVERY CORNER OFFICE CONDOMINIUM, A CONDOMINIUM
(PHASE 2)
BLOCK 15, PARCEL B, BEING A PORTION OF SECTION 6
NEW TOWN
FOR:
CD&A, INC.
BERKELEY DISTRICT, JAMES CITY COUNTY, VIRGINIA

LandTech Resources, Inc.
Surveying • GPS • Engineering
201-A Bullifants Boulevard, Williamsburg, VA 23188
Phone: (757) 565-1677 Fax: (757) 565-0782
web: landtechresources.com

SCALE: NONE
DATE: 10-30-07
JOB: 07-290
DRAWN BY: TPJ
SHEET: 2 OF 2

