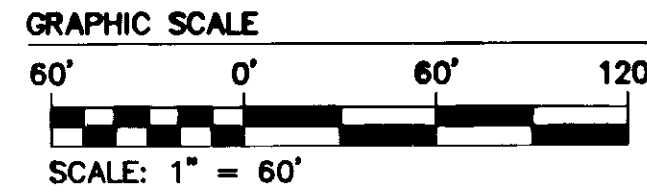


070028059

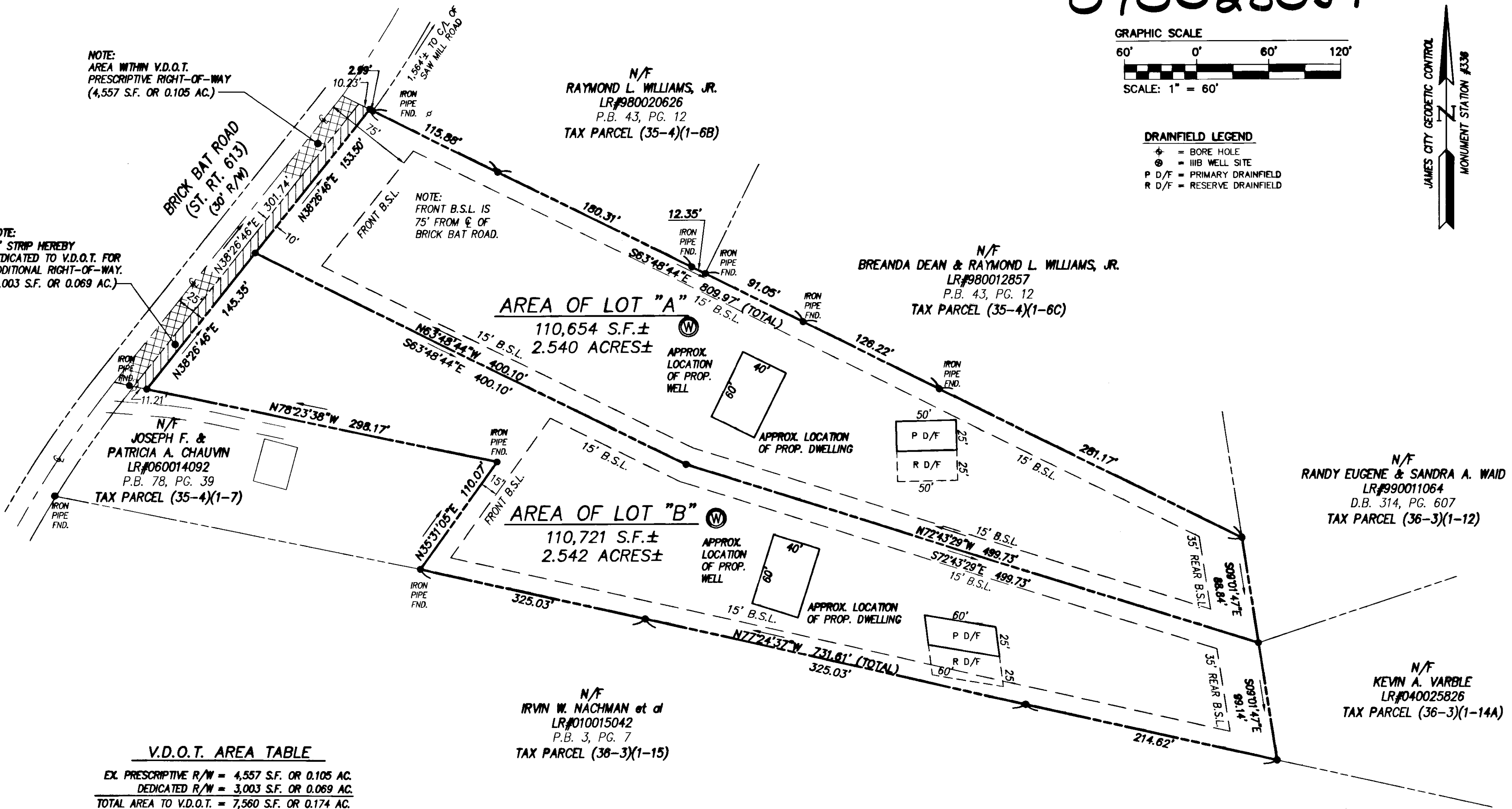


DRAINFIELD LEGEND
 ⊕ = BORE HOLE
 ⊙ = IIB WELL SITE
 P D/F = PRIMARY DRAINFIELD
 R D/F = RESERVE DRAINFIELD

NOTE:
 AREA WITHIN V.D.O.T.
 PRESCRIPTIVE RIGHT-OF-WAY
 (4,557 S.F. OR 0.105 AC.)

NOTE:
 10' STRIP HEREBY
 DEDICATED TO V.D.O.T. FOR
 ADDITIONAL RIGHT-OF-WAY.
 (3,003 S.F. OR 0.069 AC.)

NOTE:
 FRONT B.S.L. IS
 75' FROM C OF
 BRICK BAT ROAD.



V.D.O.T. AREA TABLE

EX. PRESCRIPTIVE R/W	= 4,557 S.F. OR 0.105 AC.
DEDICATED R/W	= 3,003 S.F. OR 0.069 AC.
TOTAL AREA TO V.D.O.T.	= 7,560 S.F. OR 0.174 AC.

N/F
 RANDY EUGENE & SANDRA A. WAID
 LR#990011064
 D.B. 314, PG. 607
 TAX PARCEL (36-3)(1-12)

N/F
 KEVIN A. VARBLE
 LR#040025826
 TAX PARCEL (36-3)(1-14A)

N/F
 IRVIN W. NACHMAN et al
 LR#010015042
 P.B. 3, PG. 7
 TAX PARCEL (38-3)(1-15)

LEGEND
 IRF = IRON ROD FOUND
 IFF = IRON PIPE FOUND
 IRS = IRON ROD SET
 IPS = IRON PIPE SET
 PP = POWER POLE

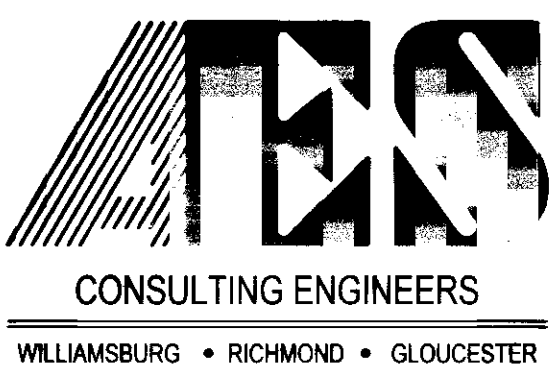
STATE OF VIRGINIA
 CITY OF WILLIAMSBURG & COUNTY OF JAMES CITY CIRCUIT
 COURT. THIS 5TH DAY OF OCT, 2007.
 THE PLAT SHOWN HEREON WAS PRESENTED AND ADMITTED
 TO THE RECORD AS THE LAW DIRECTS. 3:26 AM/PM
 INSTRUMENT # 070028059

TESTE: *Betsy B. Woolridge*
 BETSY B. WOOLRIDGE, CLERK
By Claudine H. Bishop, Dep. Clerk

City of Williamsburg & County of James City
 Circuit Court: This PLAT was recorded on
 5 Oct 2007
 at 3:26 AM/PM, PB. PG.
 DOCUMENT # 070028059
 BETSY B. WOOLRIDGE, CLERK
Betsy B. Woolridge Clerk

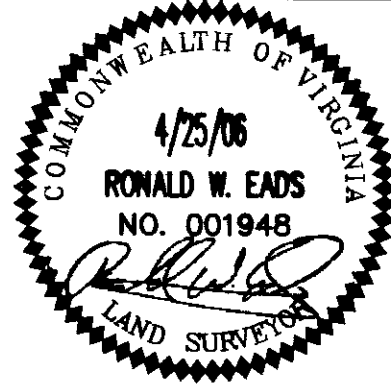
2 Large/Small Plat(s) Recorded
 herewith as # 070028059

S:\Jobs\9854\00-3860 Brick Bat Road\Draw\Sur\Plat\985400_SUBD.dwg 9/6/2007 10:15:20 AM EDT



5248 Olde Towne Road, Suite 1
 Williamsburg, Virginia 23188
 (757) 253-0040
 Fax (757) 220-8994

PLAT OF SUBDIVISION
 SHOWING PARCELS "A" AND "B"
 CONTAINING A TOTAL OF 5.15 ACRES ±
 STANDING IN THE NAME OF
JOSEPH F. AND PATRICIA A. CHAUVIN
 POWHATAN DISTRICT JAMES CITY COUNTY VIRGINIA



No.	DATE	REVISION / COMMENT / NOTE	REVISED BY	REVIEWED BY
3.	9/6/07	REVISED PER V.D.O.T. COMMENT 9-5-07	JDB	RWE
2.	8/21/07	REVISED PER COUNTY COMMENT LETTER 6-6-07	JDB	RWE
1.	5/18/07	REVISED PER COUNTY COMMENT LETTER	JDB	RWE

Designed AES	Drawn JDB
Scale 1"=60'	Date 4/25/07
Project No. 9854	
Drawing No. 2 OF 2	