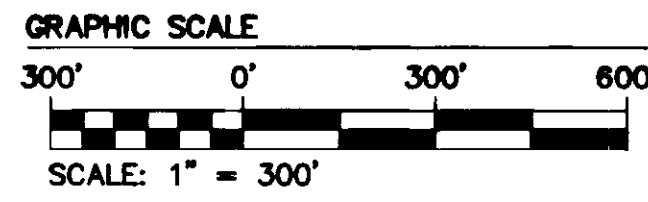
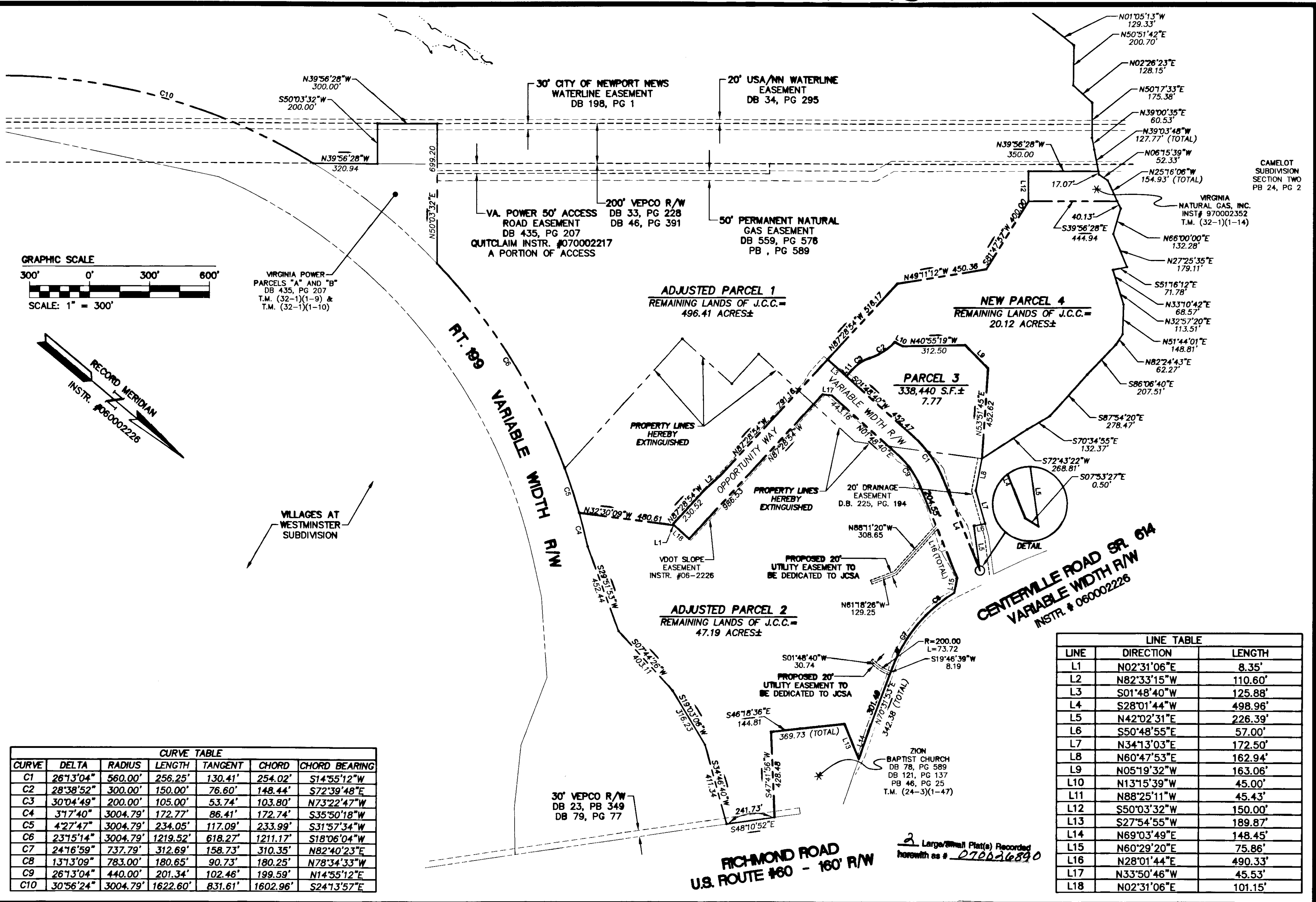
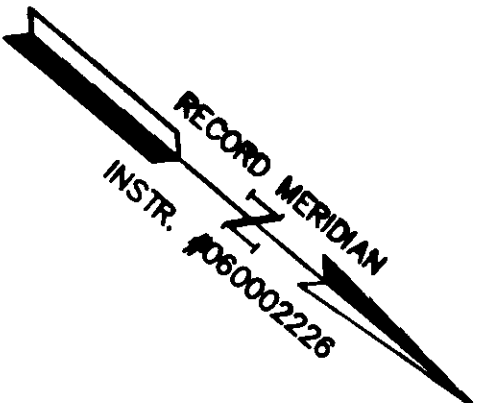


070026890



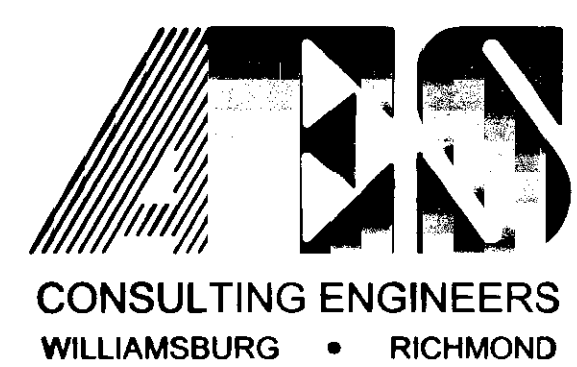
VIRGINIA POWER  
PARCELS "A" AND "B"  
DB 435, PG 207  
T.M. (32-1)(1-9) &  
T.M. (32-1)(1-10)



VILLAGES AT  
WESTMINSTER  
SUBDIVISION

CURVE TABLE						
CURVE	DELTA	RADIUS	LENGTH	TANGENT	CHORD	CHORD BEARING
C1	26°13'04"	560.00'	256.25'	130.41'	254.02'	S14°55'12"W
C2	28°38'52"	300.00'	150.00'	76.60'	148.44'	S72°39'48"E
C3	30°04'49"	200.00'	105.00'	53.74'	103.80'	N73°22'47"W
C4	3°17'40"	3004.79'	172.77'	86.41'	172.74'	S35°50'18"W
C5	4°27'47"	3004.79'	234.05'	117.09'	233.99'	S31°57'34"W
C6	23°15'14"	3004.79'	1219.52'	618.27'	1211.17'	S18°06'04"W
C7	24°16'59"	737.79'	312.69'	158.73'	310.35'	N82°40'23"E
C8	13°13'09"	783.00'	180.65'	90.73'	180.25'	N78°34'33"W
C9	26°13'04"	440.00'	201.34'	102.46'	199.59'	N14°55'12"E
C10	30°56'24"	3004.79'	1622.60'	831.61'	1602.96'	S24°13'57"E

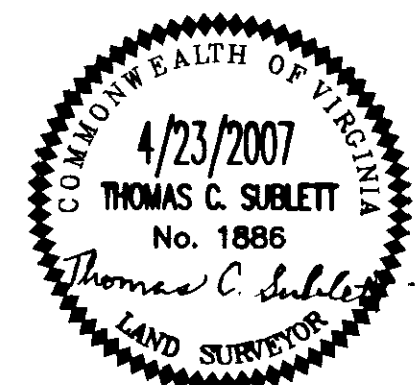
LINE TABLE		
LINE	DIRECTION	LENGTH
L1	N02°31'06"E	8.35'
L2	N82°33'15"W	110.60'
L3	S01°48'40"W	125.88'
L4	S28°01'44"W	498.96'
L5	N42°02'31"E	226.39'
L6	S50°48'55"E	57.00'
L7	N34°13'03"E	172.50'
L8	N60°47'53"E	162.94'
L9	N05°19'32"W	163.06'
L10	N13°15'39"W	45.00'
L11	N88°25'11"W	45.43'
L12	S50°03'32"W	150.00'
L13	S27°54'55"W	189.87'
L14	N69°03'49"E	148.45'
L15	N60°29'20"E	75.86'
L16	N28°01'44"E	490.33'
L17	N33°50'46"W	45.53'
L18	N02°31'06"E	101.15'



5248 Olde Towne Road, Suite 1  
Williamsburg, Virginia 23188  
(757) 253-0040  
Fax (757) 220-8994

PLAT SHOWING BOUNDARY LINE ADJUSTMENT  
AND BOUNDARY LINE EXTINGUISHMENT  
BETWEEN PARCEL 1 AND PARCEL 2,  
WARHILL TRACT  
AND  
SUBDIVISION OF PARCEL 3 & PARCEL 4  
WARHILL TRACT

POWHATAN DISTRICT      JAMES CITY COUNTY      VIRGINIA



City of Williamsburg & County of James City		Circuit Court: This PLAT was recorded on	
		at 2:47 AM/PM, PG. 1	
DOCUMENT # 070026890		BETSY B. WOOLRIDGE, CLERK	
		Clerk	
1 5-29-07		REVISED PER COUNTY COMMENTS	
No.	DATE	REVISION / COMMENT / NOTE	BY
			TCS

Designed AES	Drawn MEG
Scale 1"=300'	Date 4/23/07
Project No. 5430-79	
Drawing No. 2 OF 2	

S:\Inch\9801\C-Survey\01-TNCC-Plat\dwg\Sur\Plots\9801-S-01\01.dwg 5/29/2007 10:58:40 AM EDT