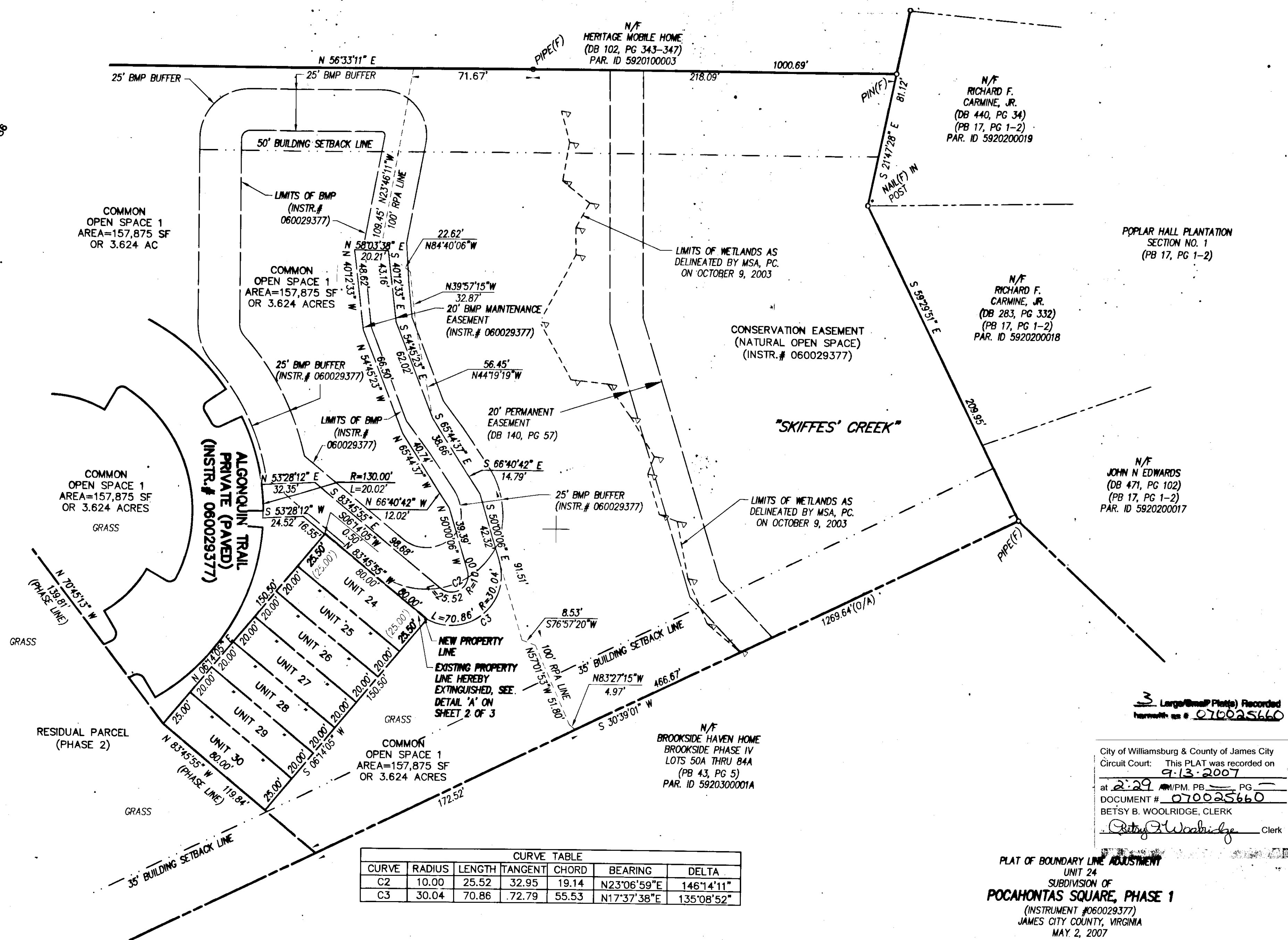
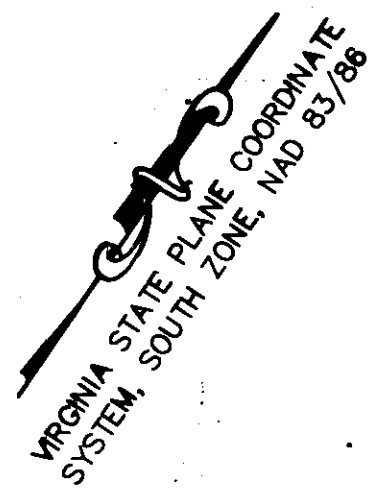


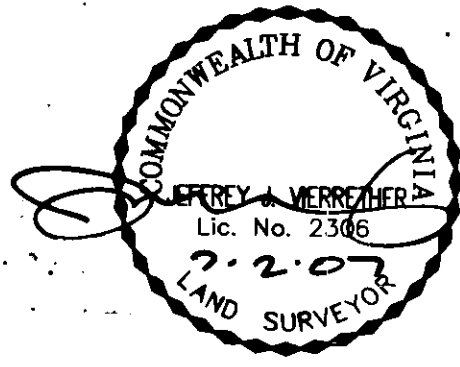
070025660



FB CS 323, PG 25 & 32
 DRWN. BY CJS
 CHK'D. BY JJV DATE 05/02/07

CURVE TABLE						
CURVE	RADIUS	LENGTH	TANGENT	CHORD	BEARING	DELTA
C2	10.00	25.52	32.95	19.14	N23°06'59"E	146°14'11"
C3	30.04	70.86	72.79	55.53	N17°37'38"E	135°08'52"

SEE SHEET 1 OF 3 FOR CERTIFICATES
 SEE SHEET 2 OF 3 FOR NOTES

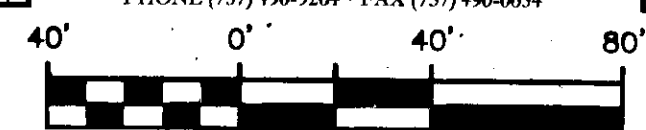


3 Large (Small Plots) Recorded
 Instrument # 070025660

City of Williamsburg & County of James City
 Circuit Court: This PLAT was recorded on
 9.13.2007
 at 2:29 PM, PB PG
 DOCUMENT # 070025660
 BETSY B. WOOLRIDGE, CLERK
 Betsy B. Woolridge Clerk

PLAT OF BOUNDARY LINE ADJUSTMENT
 UNIT 24
 SUBDIVISION OF
POCAHONTAS SQUARE, PHASE 1
 (INSTRUMENT #060029377)
 JAMES CITY COUNTY, VIRGINIA
 MAY 2, 2007

MSA, P.C.
 Landscape Architecture • Planning • Surveying
 Engineering • Environmental Sciences
 5033 ROUSE DRIVE, VIRGINIA BEACH, VA 23462-3708
 PHONE (757) 490-9264 • FAX (757) 490-0634



GRAPHIC SCALE
 1" = 40'

JOB# 03066A
 SHEET 3 OF 3