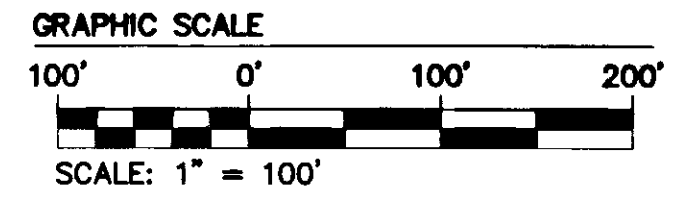
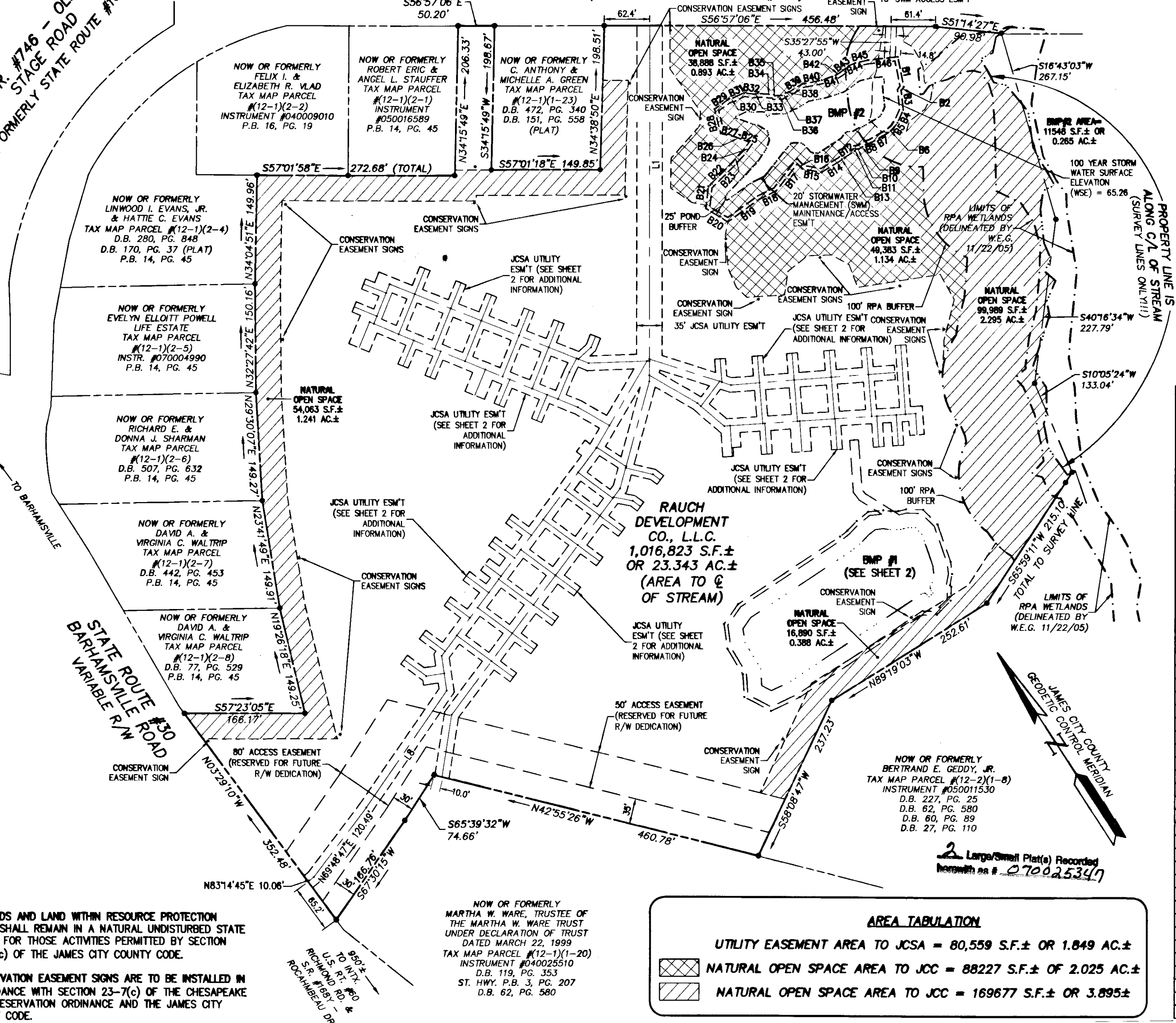


070025347

STATE ROUTE #746 - OLD STAGE ROAD - 100' R/W
(FORMERLY STATE ROUTE #168)



S.R. #746 - OLD STAGE ROAD (FORMERLY STATE ROUTE #168)



LINE	BEARING	LENGTH
L1	N33°02'54"E	490.45'
L2	N48°11'18"E	152.95'
L3	N69°36'39"E	388.04'
L4	S41°43'10"W	86.74'
L5	N63°09'21"E	138.65'
L6	N69°36'39"E	356.14'
L7	N24°37'24"E	48.47'
L8	N67°29'11"E	195.72'
L9	N69°48'47"E	120.49'
L10	N83°14'45"E	9.49'
L11	N39°28'15"W	118.04'
L12	N61°36'33"W	226.47'
L13	N26°50'39"W	76.45'
L14	S16°37'50"E	49.09'
L15	N60°59'00"W	264.07'
L16	N58°54'42"W	83.73'
L17	N35°12'21"W	295.05'
L18	S54°47'39"W	59.16'
L19	S26°50'39"E	50.20'
L20	S34°41'25"E	310.46'
L21	N23°50'27"W	48.38'
L22	S43°27'54"E	38.65'
L23	N20°23'21"W	12.81'
L24	N20°23'21"W	59.59'
L25	S46°20'11"E	26.85'
L26	N20°23'21"W	13.53'
L27	N20°23'21"W	97.26'
L28	N20°23'21"W	97.26'
L29	S20°23'21"E	38.53'
L30	N20°23'21"W	97.26'
L31	S20°23'21"E	38.53'
L32	S20°23'21"E	27.19'
L33	N20°23'21"W	97.26'
L34	N20°23'21"W	97.26'
L35	S20°23'21"E	38.53'
L36	S20°23'21"E	38.53'
L37	N20°23'21"W	97.26'
L38	S20°23'21"E	38.53'
L39	S20°23'21"E	37.93'
L40	S65°22'36"E	24.99'
L41	S54°47'39"W	16.70'
L42	S80°22'27"W	23.69'
L43	N60°54'00"E	21.20'
L44	S55°34'02"W	40.56'
L45	N55°18'35"E	38.34'
L46	S54°47'39"W	99.35'
L47	N55°18'35"E	38.34'
L48	S54°47'39"W	98.95'
L49	N55°18'35"E	38.34'
L50	S54°47'39"W	98.45'
L51	N55°18'35"E	38.34'
L52	N54°47'39"E	98.04'
L53	N55°18'35"E	38.34'
L54	S54°47'39"W	97.56'
L55	S34°41'25"E	33.94'
L56	N35°12'21"W	33.70'
L57	N55°18'35"E	38.34'
L58	S69°56'57"W	42.96'
L59	S28°23'27"W	32.10'
L60	N29°01'00"E	42.32'
L61	S28°23'27"W	89.85'
L62	N29°01'00"E	42.32'
L63	S28°23'27"W	90.37'
L64	N29°01'00"E	42.32'
L65	S28°23'27"W	90.93'
L66	N29°01'00"E	42.32'
L67	S28°23'27"W	91.49'
L68	N29°01'00"E	42.32'
L69	N29°01'00"E	42.32'
L70	N29°01'00"E	95.59'
L71	N29°01'00"E	29.42'

LINE	BEARING	LENGTH
B1	S21°34'59"W	42.10'
B2	S69°29'04"W	6.17'
B3	S26°50'47"W	26.79'
B4	S56°46'18"W	19.62'
B5	S67°24'00"W	9.93'
B6	S83°53'18"W	9.92'
B7	N86°58'47"W	27.05'
B8	N78°35'28"W	7.69'
B9	N88°45'11"W	10.60'
B10	N62°43'41"W	4.41'
B11	S66°28'24"W	3.20'
B12	S89°40'44"W	20.56'
B13	S68°00'07"W	1.23'
B14	N89°01'05"W	32.44'
B15	N46°58'46"W	27.31'
B16	N11°12'37"W	9.32'
B17	S71°08'30"W	47.41'
B18	N83°28'12"W	25.72'
B19	S87°03'33"W	53.55'
B20	N25°29'44"W	35.21'
B21	N39°06'43"E	30.90'
B22	N78°19'22"E	40.70'
B23	N75°29'16"E	27.61'
B24	N66°59'58"E	14.87'
B25	N37°32'07"W	12.30'
B26	N36°35'51"W	7.54'
B27	N43°46'05"W	20.95'
B28	N18°58'00"E	34.68'
B29	N87°52'11"E	24.82'
B30	S69°20'41"E	5.42'
B31	S82°39'19"E	16.48'
B32	S49°58'06"E	13.81'
B33	S66°45'37"E	5.45'
B34	S52°55'25"E	22.27'
B35	S02°46'30"E	1.88'
B36	S60°11'02"E	9.16'
B37	S87°18'13"E	6.72'
B38	S73°07'41"E	5.31'
B39	S88°40'25"E	20.54'
B40	S68°38'59"E	27.90'
B41	S75°47'06"E	20.04'
B42	S89°16'02"E	7.59'
B43	N84°53'08"E	15.13'
B44	S81°43'11"E	9.41'
B45	S70°04'10"E	17.68'
B46	S63°28'13"E	41.68'

AREA TABULATION

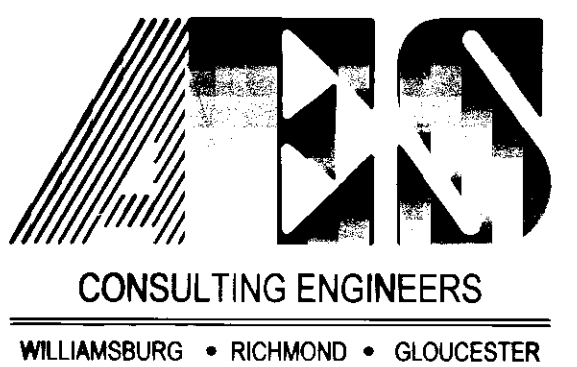
UTILITY EASEMENT AREA TO JCSA = 80,559 S.F.± OR 1.849 AC.±

NATURAL OPEN SPACE AREA TO JCC = 88227 S.F.± OF 2.025 AC.±

NATURAL OPEN SPACE AREA TO JCC = 169677 S.F.± OR 3.895±

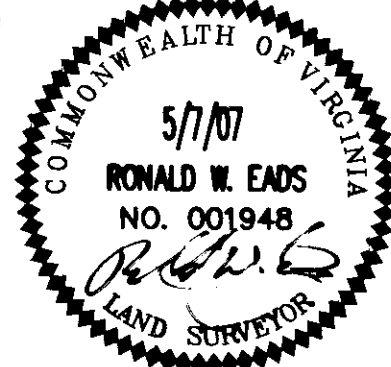
- NOTES**
1. WETLANDS AND LAND WITHIN RESOURCE PROTECTION AREAS SHALL REMAIN IN A NATURAL UNDISTURBED STATE EXCEPT FOR THOSE ACTIVITIES PERMITTED BY SECTION 23-7 (c) OF THE JAMES CITY COUNTY CODE.
 2. CONSERVATION EASEMENT SIGNS ARE TO BE INSTALLED IN ACCORDANCE WITH SECTION 23-7(c) OF THE CHESAPEAKE BAY PRESERVATION ORDINANCE AND THE JAMES CITY COUNTY CODE.

NOW OR FORMERLY MARTHA W. WARE, TRUSTEE OF THE MARTHA W. WARE TRUST UNDER DECLARATION OF TRUST DATED MARCH 22, 1999 TAX MAP PARCEL #12-1(1-20) INSTRUMENT #040025510 D.B. 119, PG. 353 ST. HWY. P.B. 3, PG. 207 D.B. 62, PG. 580



5248 Olde Towne Road, Suite 1
Williamsburg, Virginia 23188
(757) 253-0040
Fax (757) 220-8994

PLAT SHOWING EASEMENTS FOR CONVEYANCE TO THE JAMES CITY SERVICE AUTHORITY AND THE COUNTY OF JAMES CITY FROM RAUCH DEVELOPMENT CO., L.L.C.



City of Williamsburg & County of James City Circuit Court

This PLAT was recorded on 7 September 2007 at 3:26 PM, P.B. PG. 1

DOCUMENT # 070025347

BETSY B. WOOLDRIDGE, CLERK

Betsy B. Wooldridge Clerk

No.	DATE	REVISION / COMMENT / NOTE	REVISOR	DATE
2	08/14/07	REVISED PER COUNTY COMMENTS	ABS	RWE
1	07/27/07	REVISED PER JCC COMMENTS, DATED 07/19/07	ABS	RWE

Designed	Drawn
AES	AWT
Scale	Date
1"=100'	5/7/07
Project No.	
9048-09	
Drawing No.	
1 of 2	

R:\Jobs\9048\09-Caddos-79-LaGrange.dwg (Sun)Plats\904802ESMT WEATHERLY SH 1.dwg, 8/17/2007 8:38:06 AM, Plotter: HP 500 Mylar.pc3