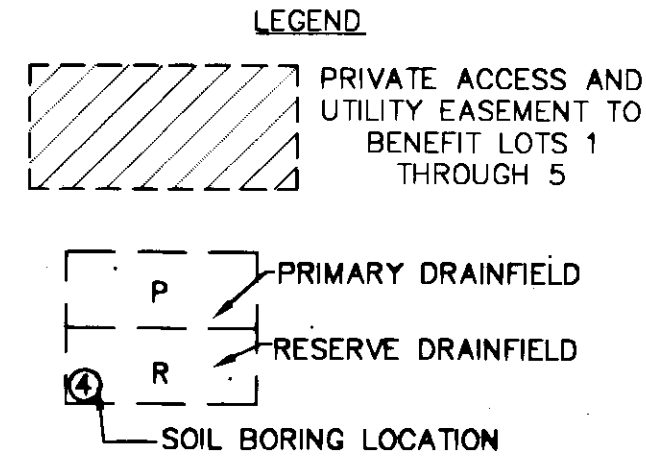
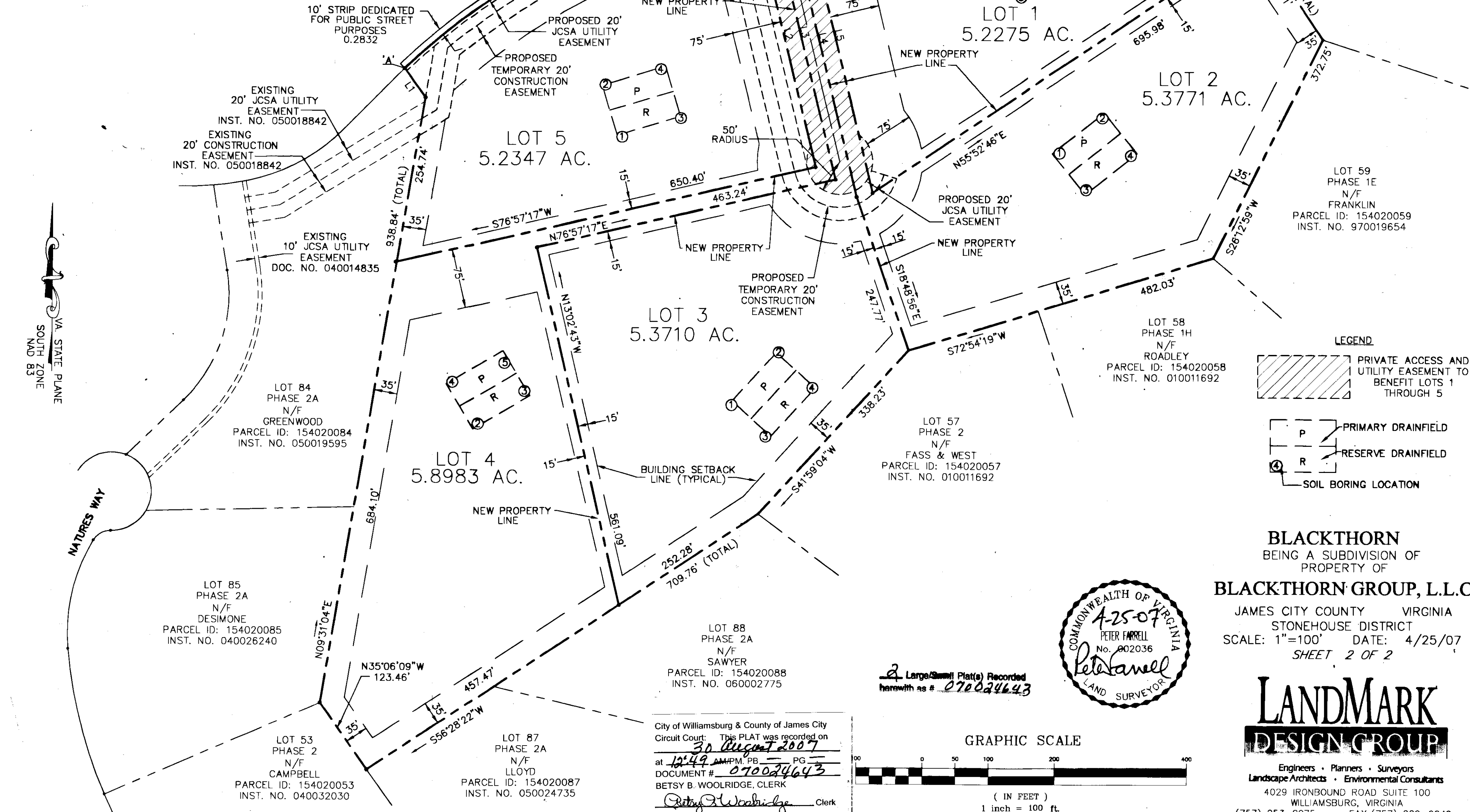


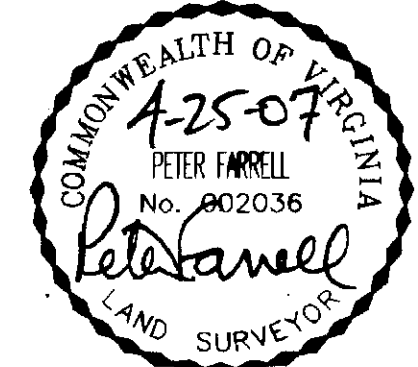
070024643

LINE TABLE		
LINE	LENGTH	BEARING
L1	54.28'	N35°46'00"W
L2	433.91'	S13°39'10"E
L3	459.41'	S13°39'10"E
L4	492.26'	S13°39'10"E
L5	492.30'	N13°39'10"W
L6	13.92'	N75°11'15"E

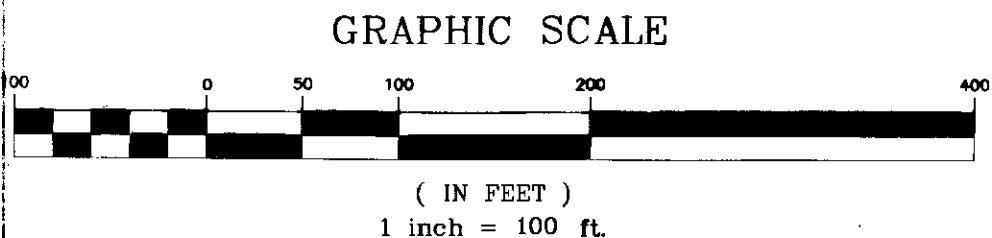
CURVE TABLE						
CURVE	LENGTH	RADIUS	TANGENT	CHORD	CHORD BEARING	DELTA
C1	523.60'	1022.18'	267.68'	517.89'	N60°30'39"E	29°20'57"
C2	58.42'	6592.63'	29.21'	58.42'	N75°26'29"E	0°30'28"
C3	25.00'	6592.63'	12.50'	25.00'	N75°48'14"E	0°13'02"
C4	25.00'	6592.63'	12.50'	25.00'	N76°01'17"E	0°13'02"
C5	25.00'	6592.63'	12.50'	25.00'	N76°14'19"E	0°13'02"
C6	132.31'	6592.63'	66.16'	132.31'	N76°55'20"E	1°09'00"
C7	93.51'	1515.67'	46.77'	93.49'	N75°43'58"E	3°32'06"
C8	99.99'	1506.54'	50.02'	99.98'	N72°10'51"E	3°48'10"



BLACKTHORN
 BEING A SUBDIVISION OF
 PROPERTY OF
BLACKTHORN GROUP, L.L.C.
 JAMES CITY COUNTY VIRGINIA
 STONEHOUSE DISTRICT
 SCALE: 1"=100' DATE: 4/25/07
 SHEET 2 OF 2



2 Large/Small Plat(s) Recorded
 herewith as # 070024643



City of Williamsburg & County of James City
 Circuit Court: This PLAT was recorded on
 30 August 2007
 at 12:49 PM, PG
 DOCUMENT # 070024643
 BETSY B. WOOLRIDGE, CLERK
 Betsy B. Woolridge Clerk



Engineers • Planners • Surveyors
 Landscape Architects • Environmental Consultants
 4029 IRONBOUND ROAD SUITE 100
 WILLIAMSBURG, VIRGINIA
 (757) 253-2975 FAX: (757) 229-0049