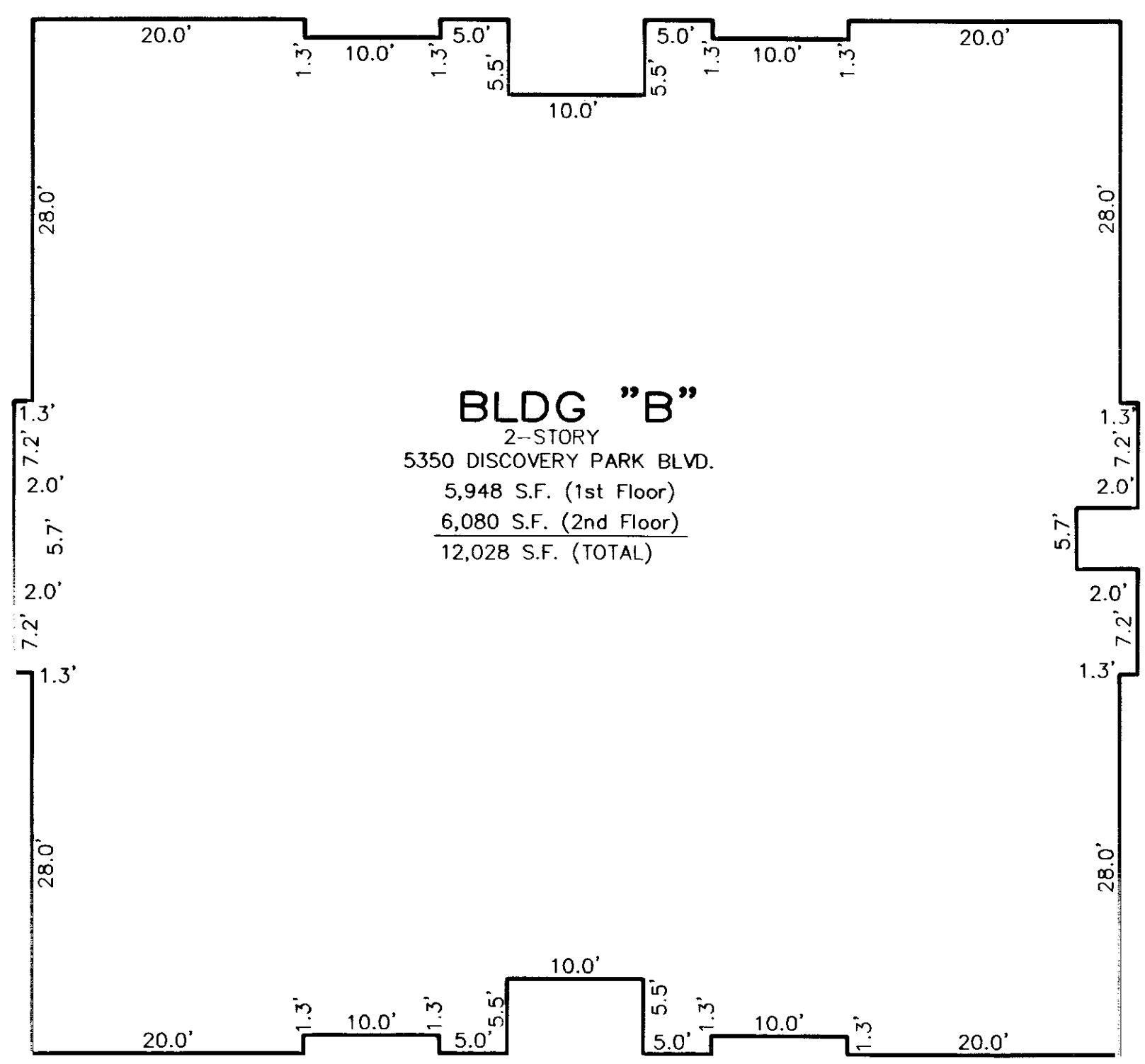
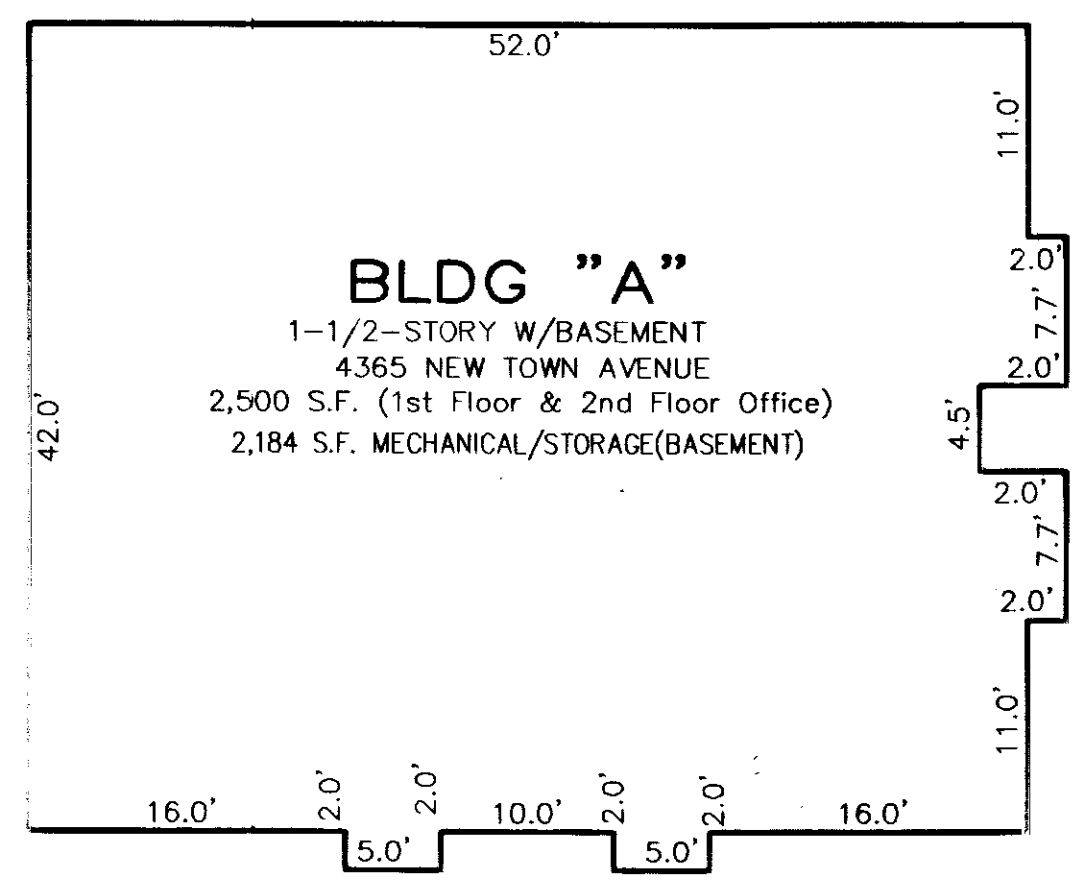


070021955



**BLDG "B"**  
 2-STORY  
 5350 DISCOVERY PARK BLVD.  
 5,948 S.F. (1st Floor)  
 6,080 S.F. (2nd Floor)  
 12,028 S.F. (TOTAL)

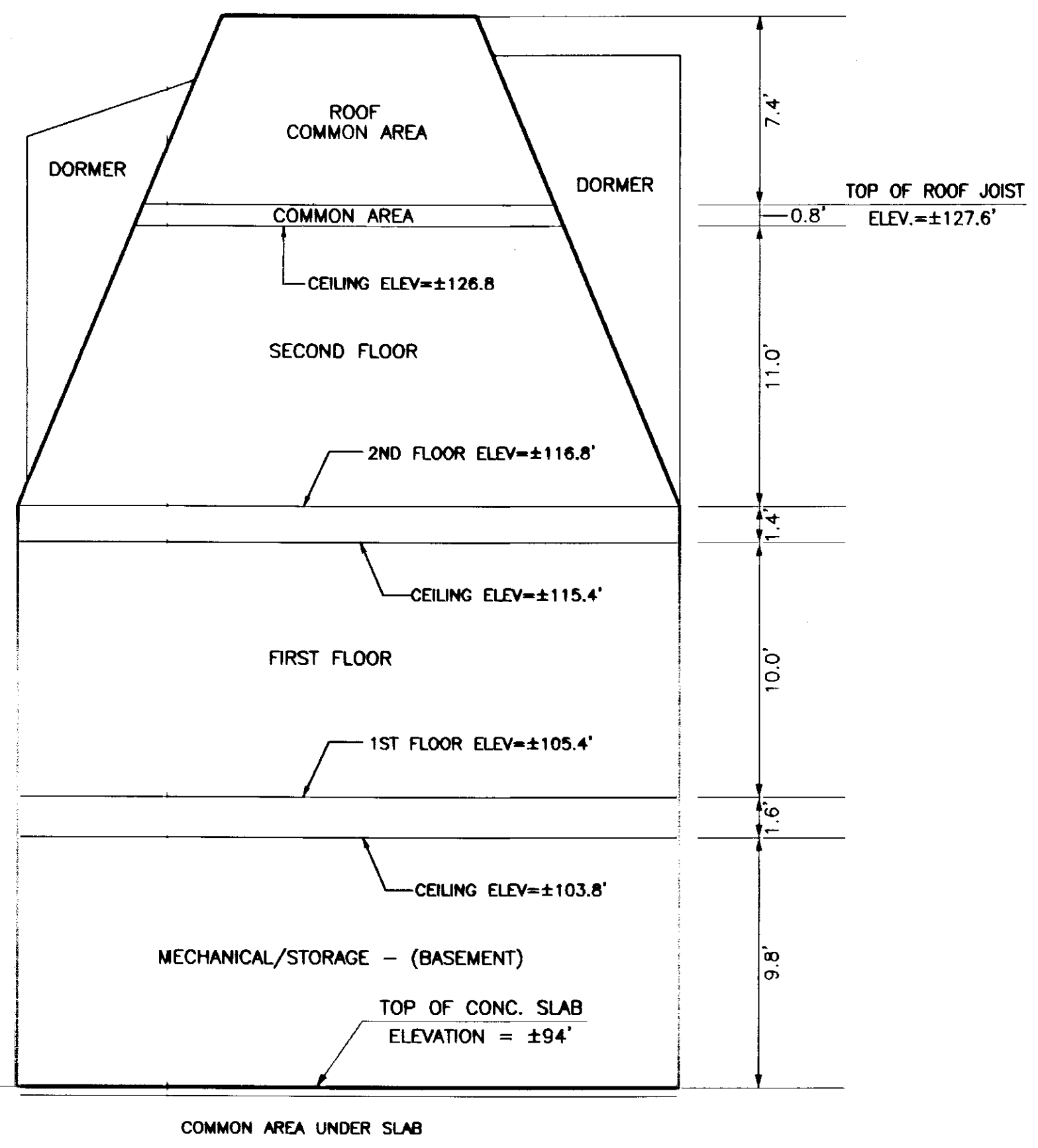
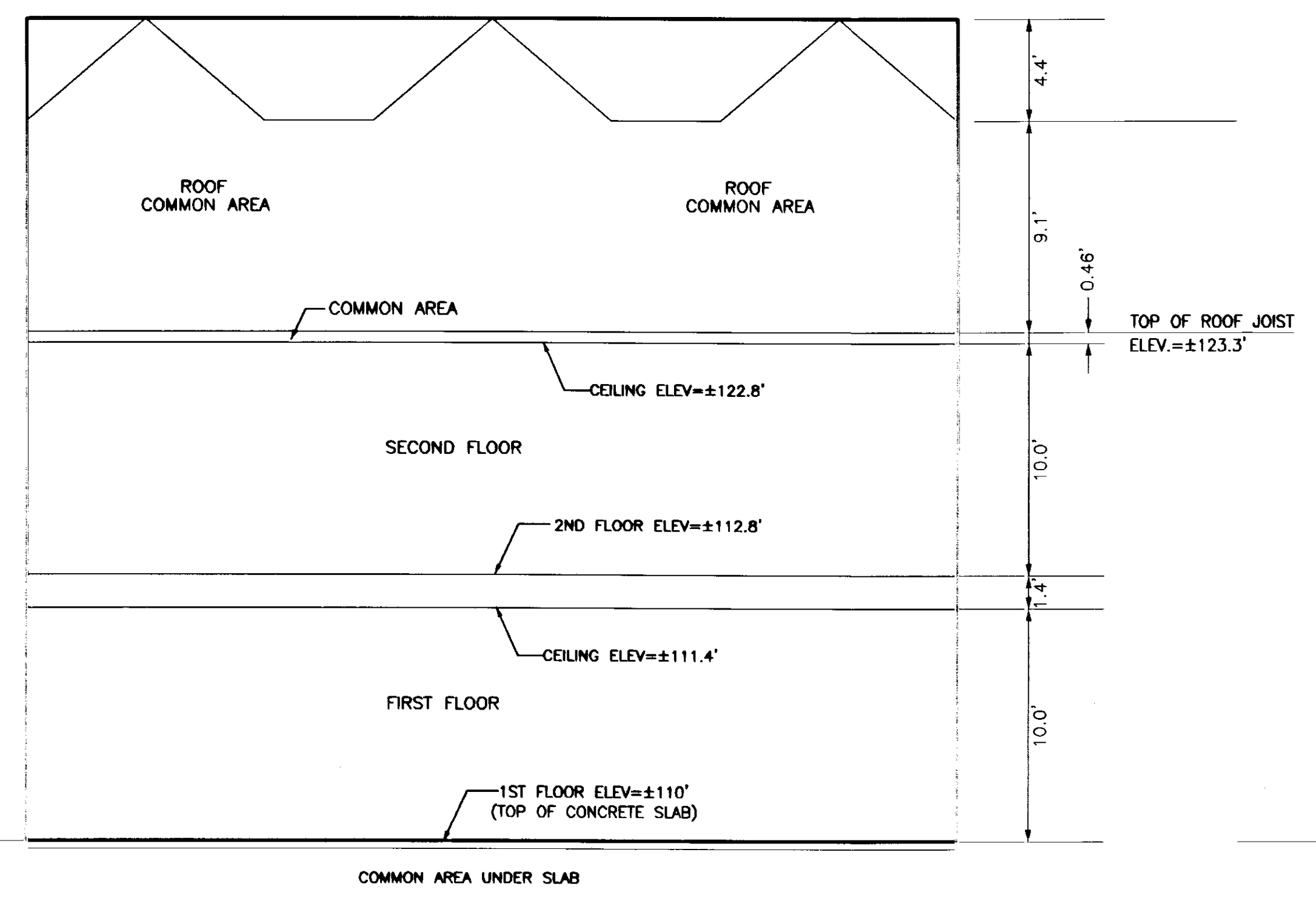


**BLDG "A"**  
 1-1/2-STORY W/BASEMENT  
 4365 NEW TOWN AVENUE  
 2,500 S.F. (1st Floor & 2nd Floor Office)  
 2,184 S.F. MECHANICAL/STORAGE(BASEMENT)

City of Williamsburg & County of James City  
 Circuit Court. This PLAT was recorded on  
 at 11:18 AM/PM, PG  
 DOCUMENT # 070021955  
 BETSY B. WOOLRIDGE, CLERK  
 Betsy B. Woolridge Clerk

2 Large Survey Plates Recorded  
 with # 070021955

PLAT SHOWING BUILDINGS A & B  
**DISCOVERY CORNER OFFICE CONDOMINIUM, A CONDOMINIUM  
 (PHASE 1)**  
 BLOCK 15, PARCEL B, BEING A PORTION OF SECTION 6  
 NEW TOWN  
 FOR:  
**CD&A, INC.**  
 BERKELEY DISTRICT, JAMES CITY COUNTY, VIRGINIA



**LandTech Resources, Inc.**  
 Surveying · GPS · Engineering  
 5810-F Mooretown Road, Williamsburg, VA 23188  
 Phone: (757) 565-1677 Fax: (757) 565-0782  
 web: landtechresources.com

SCALE: NONE
DATE: 7-27-2007
JOB: 07-290
DRAWN BY: MHC
SHEET: 2 OF 2

