

070021225

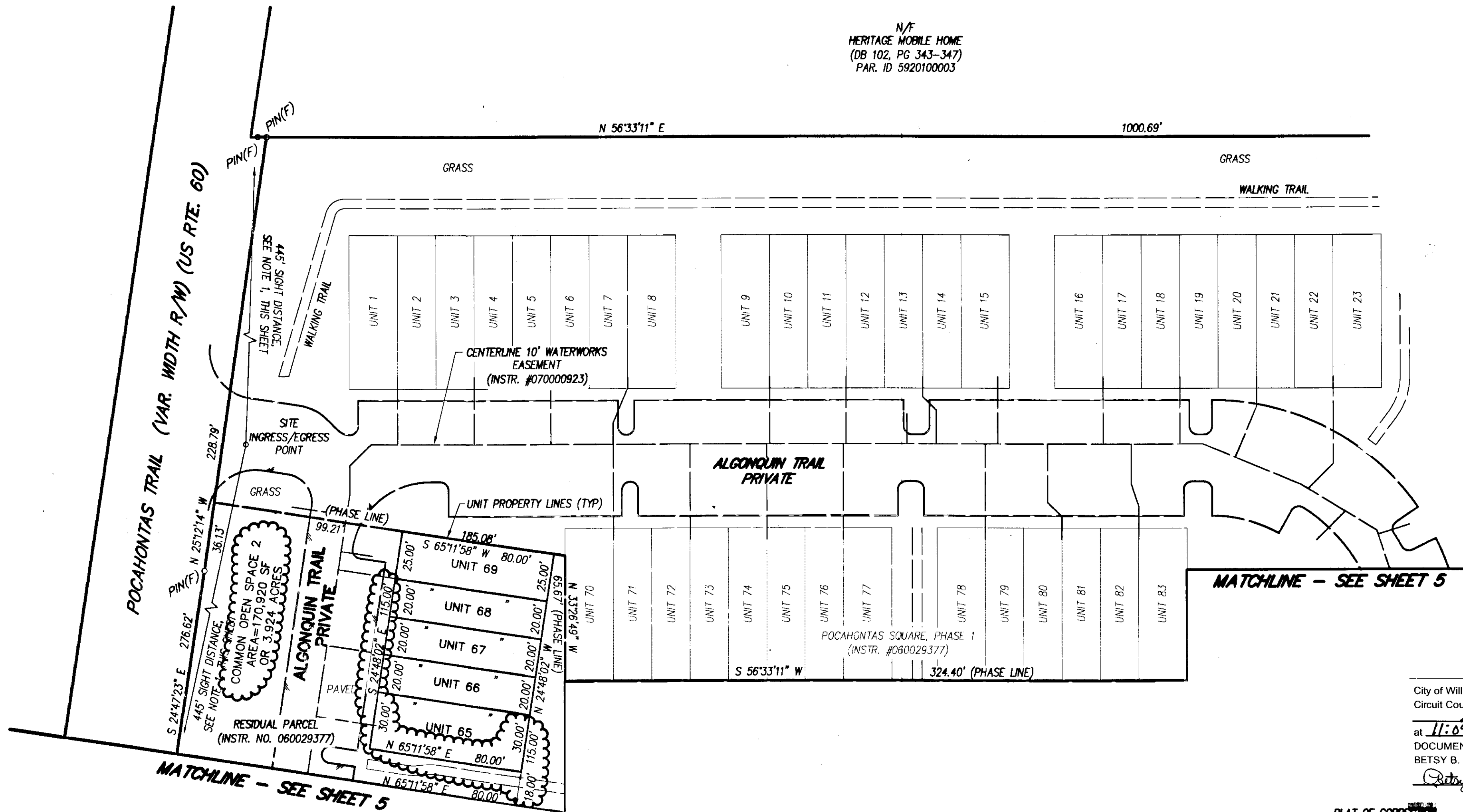
REVISION NOTES:

1. AREA OF COMMON OPEN SPACE 2 WAS PREVIOUSLY DEPICTED AS 3.829 ACRES. THE CORRECT AREA IS 3.924 ACRES.

2. THE LOT WIDTH FOR UNIT 65 WAS PREVIOUSLY DEPICTED AS 28.00'. THE CORRECT WIDTH IS 30.00'.

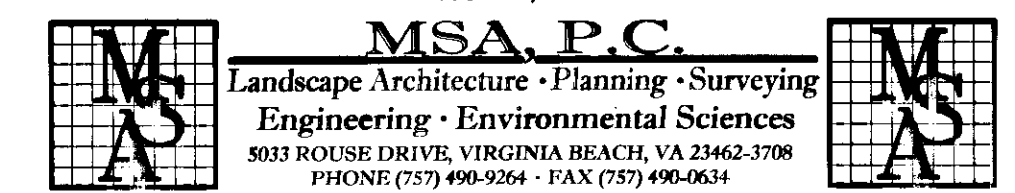
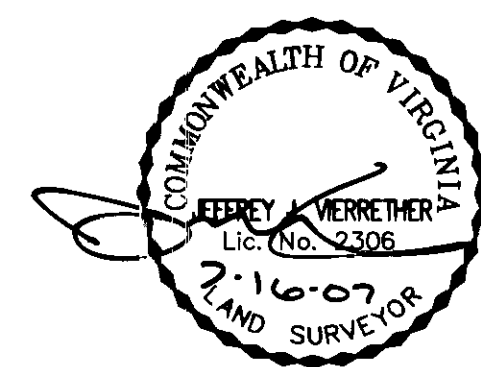
VIRGINIA STATE PLANE COORDINATE SYSTEM, SOUTH ZONE, NAD 83/86

N/F HERITAGE MOBILE HOME (DB 102, PG 343-347) PAR. ID 5920100003



City of Williamsburg & County of James City Circuit Court. This PLAT was recorded on 20 July 2007 at 11:09 AM in PG DOCUMENT # 070021225 BETSY B. WOOLRIDGE, CLERK

PLAT OF CORRECTION OF POCAHONTAS SQUARE, PHASE 2 SHOWING WATERWORKS EASEMENT (INSTRUMENT #070000923) JAMES CITY COUNTY, VIRGINIA JULY 13, 2007



NOTE THE PURPOSE OF THIS SHEET IS TO SHOW THE EXISTING WATER WORKS EASEMENT AS RECORDED IN INSTRUMENT NUMBER 070000923 (CITY OF NEWPORT NEWS). ALSO SHOWN ON SHEET 5 OF 6. SEE SHEET 1 OF 6 FOR NOTES AND CERTIFICATES

6 Large/Small Plat(s) Recorded herewith as # 070021225

FB: CS 323, PG 25 & 32 DRWN. BY CJS CHK'D. BY JJV DATE 07/13/07

JOB# 03066A SHEET 6 OF 6